



# EXECUTIVE OFFICE SUITES FOR LEASE

110 W Indiana Ave, DeLand, FL 32720

Contact: Ben Kuykendall  
Senior Sales & Leasing Associate

E: Ben@FCPG.com  
P: 407.872.0177 ext.131

Contact: Dan Van Nada, CCIM  
Vice President of Brokerage Services

E: Dan@FCPG.com  
P: 407.872.0177 ext.117

## For Lease: 176 SF - 523 RSF, Modified Gross

### Availability:

Suite 201: ± 523 RSF - \$1,275 / Month	Available Immediately
Suite 203: ± 356 RSF - \$850 / Month	Available Immediately
Suite 208: ± 217 RSF - \$575 / Month	Available Immediately
Suite 209: ± 176 RSF - \$475 / Month	Available Immediately

Executive suites located in the Historic Landis Fish Building in the heart of the historic, award-winning Downtown DeLand

Second floor offices available with conference table, breakroom and bathroom shared among the building

Walking distance from Stetson University, Volusia County Courthouse and street-side retail

Rate includes all utilities and operating expenses; tenants can add janitorial service for \$50 / month

Ideal for any professional service users (accounting, attorney, insurance, etc.)

## DEMOGRAPHICS

**2025**

**1 Mile**

**3 Miles**

**5 Miles**

Total Population	11,843	49,397	83,349
Average HH Income	\$71,538	\$89,726	\$99,340
Total Households	4,323	19,344	33,461

■ 615 E. Colonial Dr., Orlando, FL 32803 ■ Phone: 407.872.0209 ■ [www.FCPG.com](http://www.FCPG.com) ■

Information furnished regarding the subject property is believed to be accurate, but no guarantee or representation is made. References to square footage are approximate. This offering is subject to errors, omissions, prior sale or lease or withdrawal without notice. ©2025 First Capital Property Group, Licensed Real Estate Brokers & Managers.



# NEIGHBORHOOD

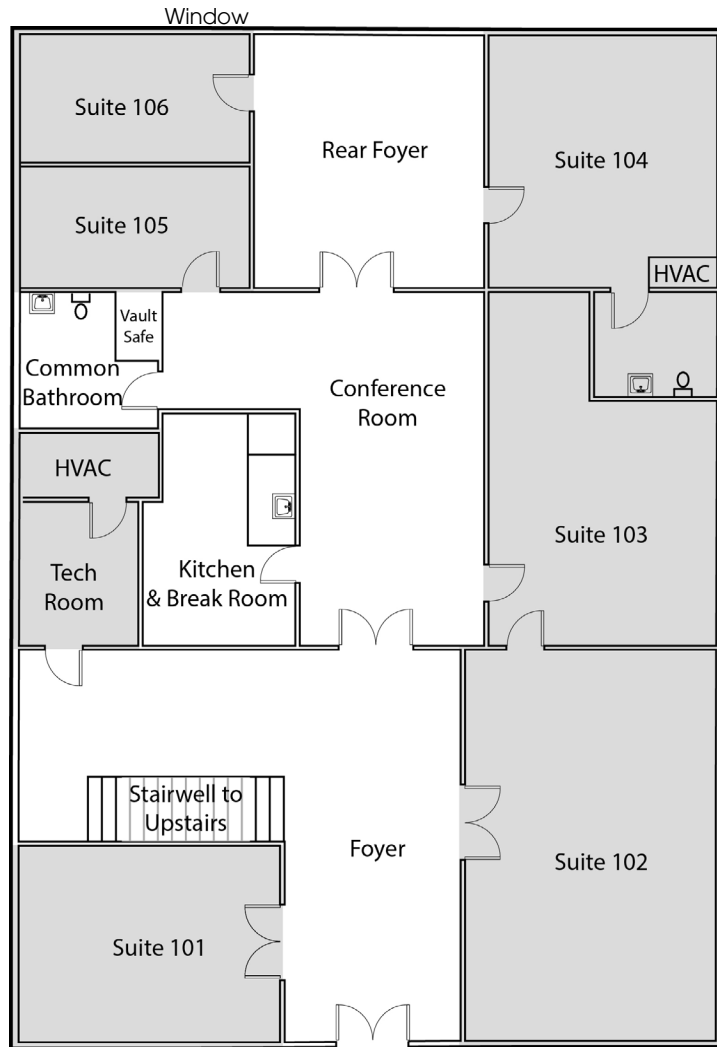


■ 615 E. Colonial Dr., Orlando, FL 32803 ■ Phone: 407.872.0209 ■ [www.FCPG.com](http://www.FCPG.com) ■

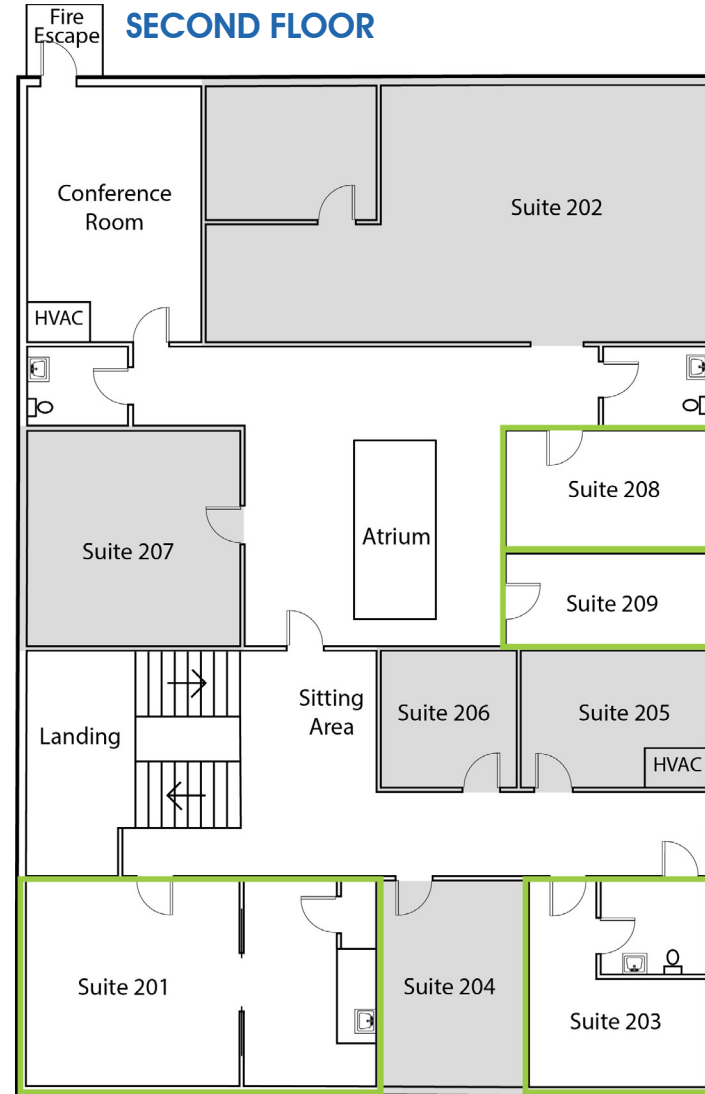
Information furnished regarding the subject property is believed to be accurate, but no guarantee or representation is made. References to square footage are approximate. This offering is subject to errors, omissions, prior sale or lease or withdrawal without notice. ©2025 First Capital Property Group, Licensed Real Estate Brokers & Managers.

# FLOORPLANS

## FIRST FLOOR



## SECOND FLOOR



■ 615 E. Colonial Dr., Orlando, FL 32803 ■ Phone: 407.872.0209 ■ [www.FCPG.com](http://www.FCPG.com) ■

Information furnished regarding the subject property is believed to be accurate, but no guarantee or representation is made. References to square footage are approximate. This offering is subject to errors, omissions, prior sale or lease or withdrawal without notice. ©2025 First Capital Property Group, Licensed Real Estate Brokers & Managers.



## SUITE PHOTOS

**SUITE 208: ± 184 RSF**



**SUITE 209: ± 143 RSF**



**SHARED CONFERENCE ROOM**



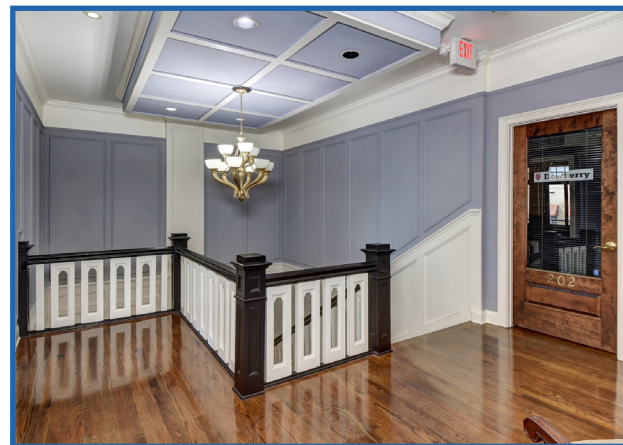
**SHARED COMMON BATHROOM**



■ 615 E. Colonial Dr., Orlando, FL 32803 ■ Phone: 407.872.0209 ■ [www.FCPG.com](http://www.FCPG.com) ■

Information furnished regarding the subject property is believed to be accurate, but no guarantee or representation is made. References to square footage are approximate. This offering is subject to errors, omissions, prior sale or lease or withdrawal without notice. ©2025 First Capital Property Group, Licensed Real Estate Brokers & Managers.

## ADDITIONAL PHOTOS



■ 615 E. Colonial Dr., Orlando, FL 32803 ■ Phone: 407.872.0209 ■ [www.FCPG.com](http://www.FCPG.com) ■

Information furnished regarding the subject property is believed to be accurate, but no guarantee or representation is made. References to square footage are approximate. This offering is subject to errors, omissions, prior sale or lease or withdrawal without notice. ©2025 First Capital Property Group, Licensed Real Estate Brokers & Managers.