

INDUSTRIAL BUILDING | OUTDOOR STORAGE FOR SALE OR LEASE

2291 E US-92

PLANT CITY, FL 33563

**LEE &
ASSOCIATES**
COMMERCIAL REAL ESTATE SERVICES



PROPERTY HIGHLIGHTS:

Building Size: 17,500± SF

Land Size: 3 Acres

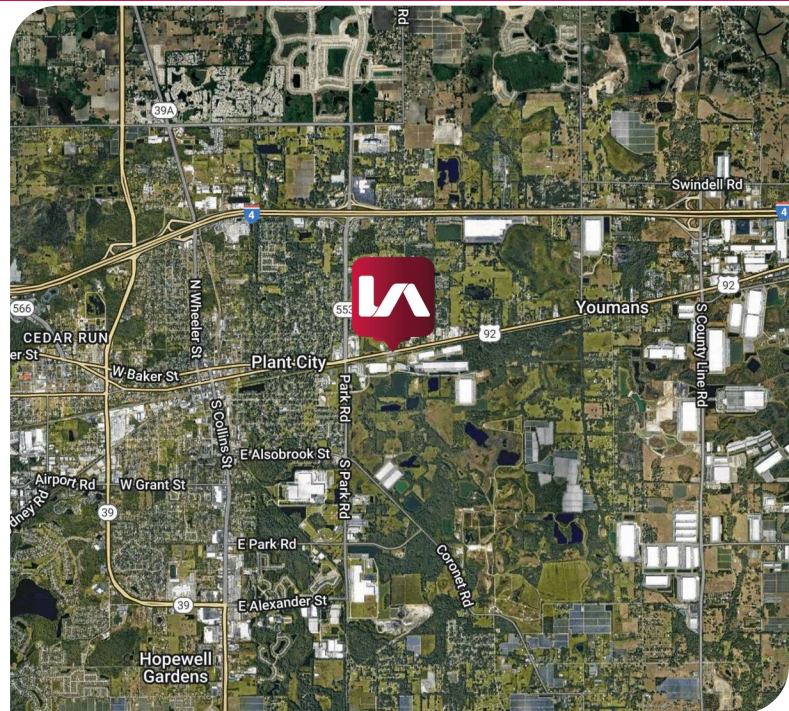
Use: Trucking parking, outdoor storage, etc.

LOCATION DESCRIPTION:

Located on US Highway 92 in Plant City, this property offers excellent visibility and access with over 13,900 AADT. Just minutes from I-4, it provides quick connections to Tampa, Lakeland, and Orlando—ideal for logistics and distribution. The site also benefits from direct frontage on CSX rail lines, supporting a range of industrial uses.

LEASE OR SALE RATES:

CALL BROKER FOR DETAILS



Leasing Contacts:

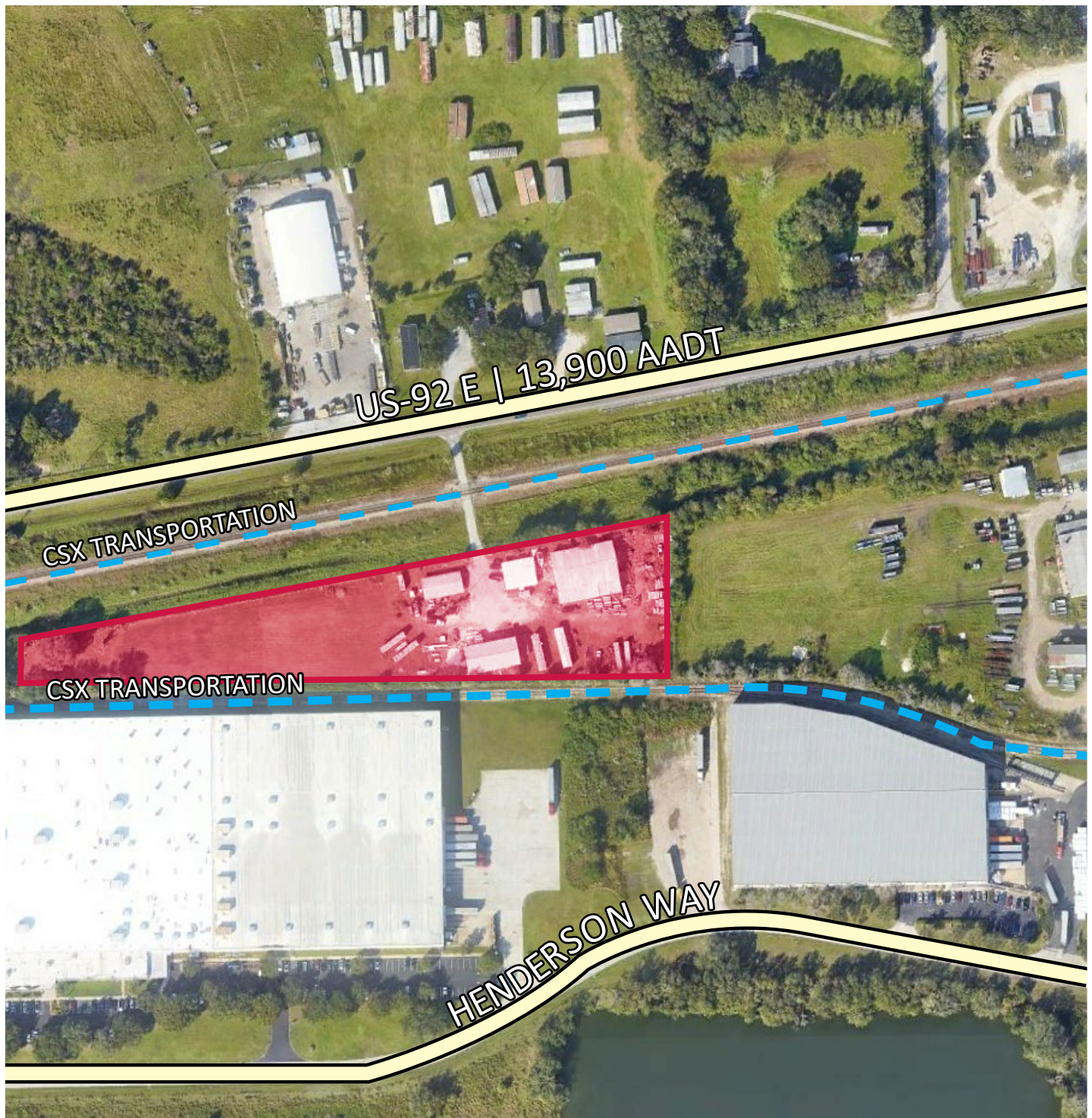
Christopher "CJ" Griffith, SIOR
Vice President
cgriffith@lee-associates.com
D 321.281.8508

Ryan Griffith
Vice President
rgriffith@lee-associates.com
D 321.281.8512

INDUSTRIAL BUILDING & OUTDOOR STORAGE
2291 E US-92
PLANT CITY, FL 33563



INDUSTRIAL BUILDING & OUTDOOR STORAGE
2291 E US-92
PLANT CITY, FL 33563



Leasing Contacts:

Christopher "CJ" Griffith, SIOR
Vice President
cgriffith@lee-associates.com
D 321.281.8508

Ryan Griffith
Vice President
rgriffith@lee-associates.com
D 321.281.8512