

FOR SALE

ACLF or Multi-Family Land

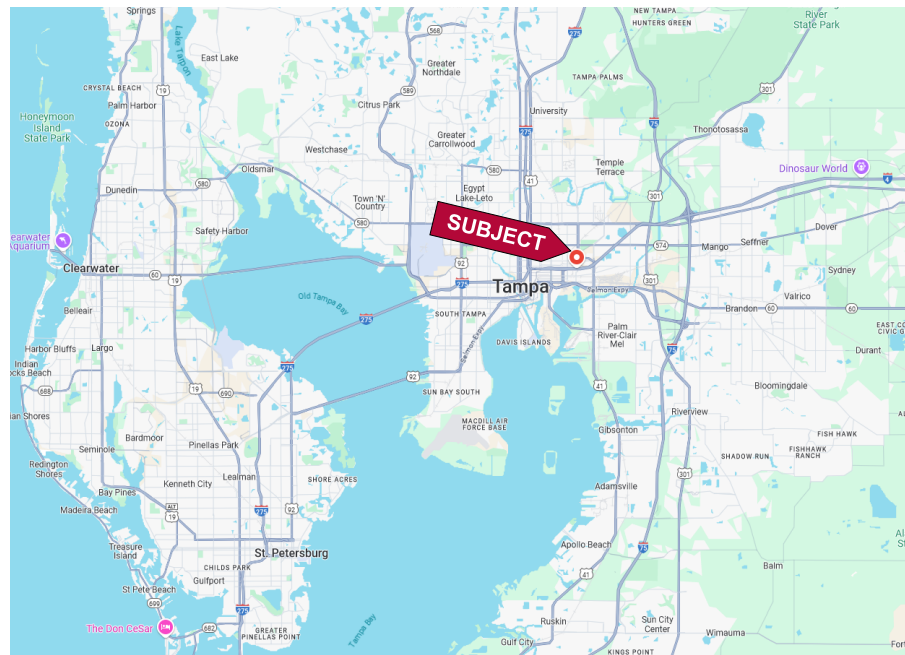
3905, 3909 and 3911 E 15th Ave., Tampa, FL 33605



FEATURES

- ❖ .92 Ares (MOL)
- ❖ Four Lots (sold together only)
- ❖ Zoning: RM 24–Residential Multi-Family
- ❖ 94 Unit ACLF or 22 Multi-Family Units – Plus 9 Storage Units
- ❖ Located in East Tampa Opportunity Zone
- ❖ Lot Dimensions: 270' x 156' x 270' x 145'
- ❖ 270' Frontage on E 15th Ave
- ❖ Utilities: Water, Sewer, Trash: City of Tampa
Electric: TECO
- ❖ Folio Numbers: 175381-, 175382-, 178383-0000
- ❖ Flood Zone: X
- ❖ 2023 Real Estate Taxes: \$7,724.00 (total/all parcels)
- ❖ **PRICE REDUCED: \$890,000.00**
Motivated Seller

LOCATION MAP



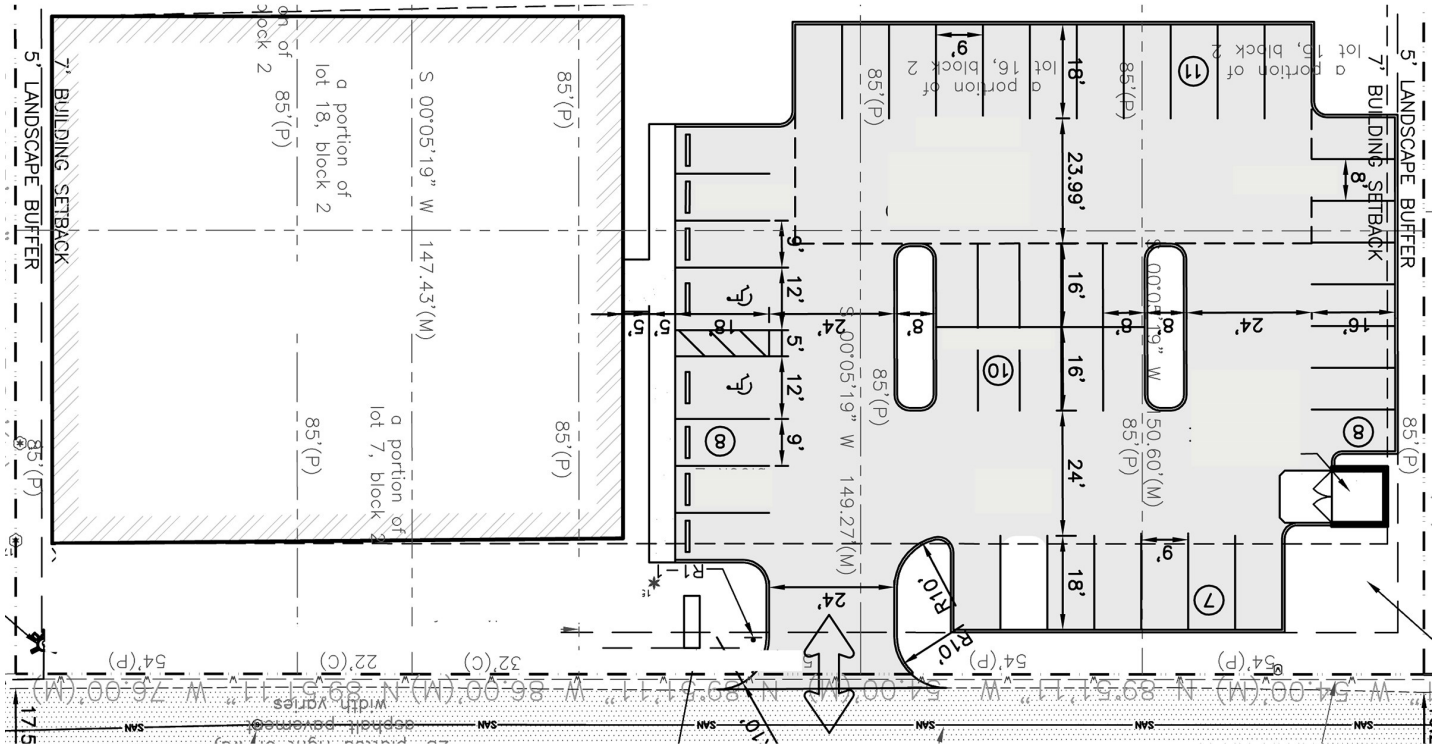
Elliott M. Ross, CCIM
O: 813.755.6700
C: 727.639.3800
elliott@rossrealtytampabay.com

ROSS REALTY GROUP, INC.
Henderson Centre
3902 Henderson Blvd. Suite 203
Tampa, FL 33629



CONCEPTUAL SITE PLAN

St. Road 400 (I-4)



E. 15th Ave

Hillsborough County Parcel Map

Interstate 4W

