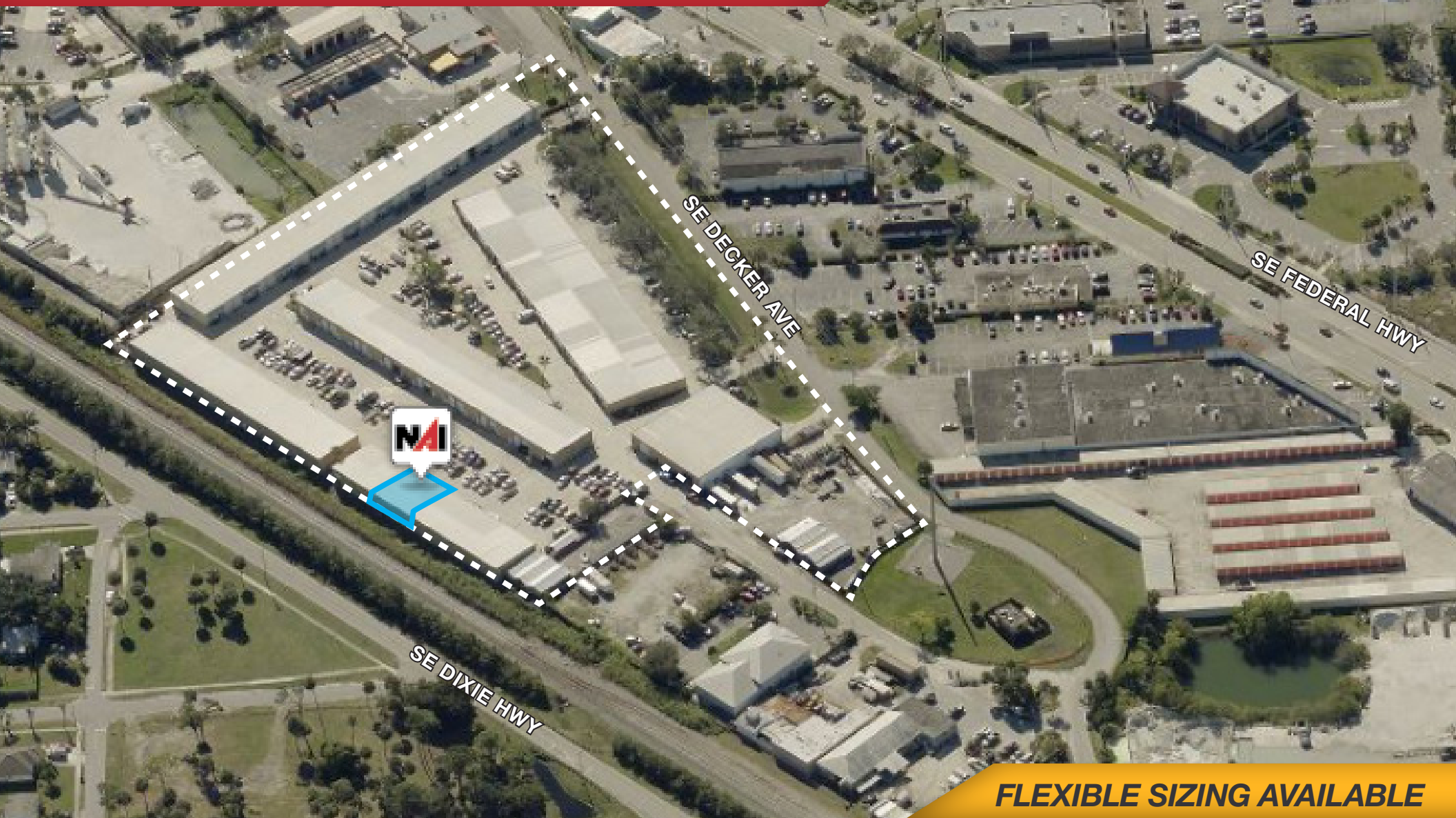


2,225 SF Industrial Condo Space

1501 SE Decker Ave, Stuart, FL 34994

NAI Southcoast



FLEXIBLE SIZING AVAILABLE

Presented by

Nikolaus M. Schroth, CCIM

Principal | Broker Associate

+1 772 286 6292

nikschrth@naisouthcoast.com

www.naisouthcoast.com

J. Jeffery Allman, Jr.

Principal | Broker Associate

+1 772 286-6292 c +1 772 283 1555

jeff@naisouthcoast.com

www.naisouthcoast.com

James McKinney

Sales Associate

+1 772 349 3414

jamesmckinney@naisouthcoast.com

www.naisouthcoast.com

FOR SALE:

Unit 516/517: \$480,000

2,225 SF Industrial Condo Space

1501 SE Decker Ave, Stuart, FL 34994

Property Details

Location:	1501 SE Decker Ave, Stuart, FL 34994
Jurisdiction:	Stuart
Zoning:	Warehouse Industrial
Available Units:	516 & 517 - 2,225 SF - \$480,000
Utilities:	Martin County
Property Class:	Industrial Condo
Monthly HOA Dues:	\$245.57 per unit

Property Overview

This industrial condominium presents 2,225 square feet of versatile flex space. Ideally situated just off US Highway 1, the property offers excellent visibility and convenient access to major transportation routes.. Ideal for a variety of industrial uses, the property features ample space for warehousing, manufacturing, or office setup, with the potential for customized configurations to suit specific business needs.

The convenient location ensures easy connectivity to major transportation routes, making it a functional and accessible industrial space.

Immediate Occupancy Available



2,225 SF Industrial Condo Space

1501 SE Decker Ave, Stuart, FL 34994



2,225 SF Industrial Condo Space

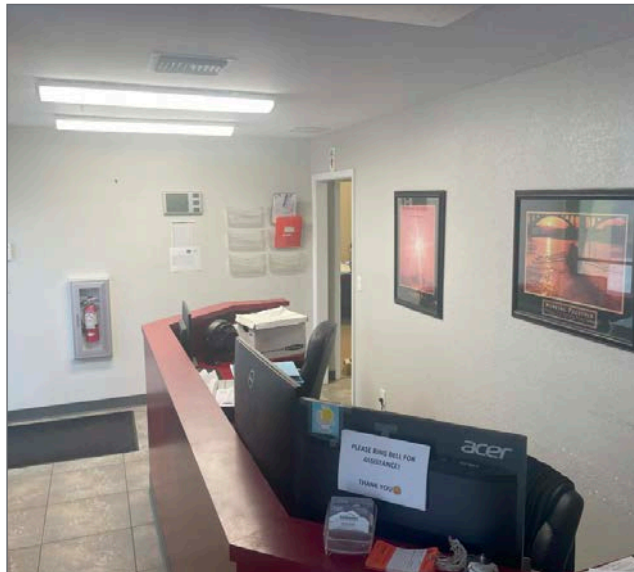
1501 SE Decker Ave, Stuart, FL 34994

Building E
Units 516 & 517: 2,225 SF

Exterior



Interior



2,225 SF Industrial Condo Space

1501 SE Decker Ave, Stuart, FL 34994

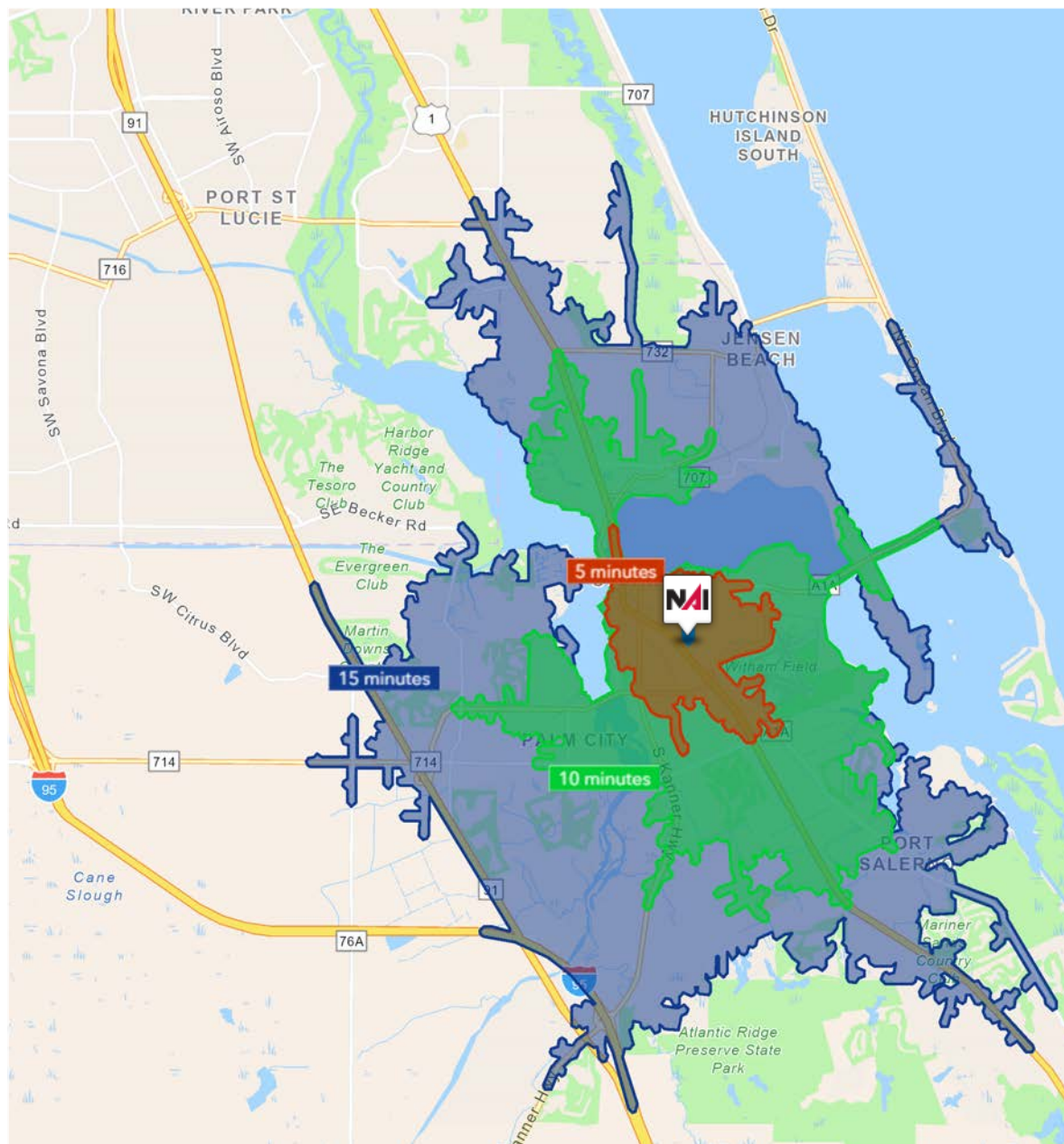
Satellite Image



2,225 SF Industrial Condo Space

1501 SE Decker Ave, Stuart, FL 34994

Drive Time

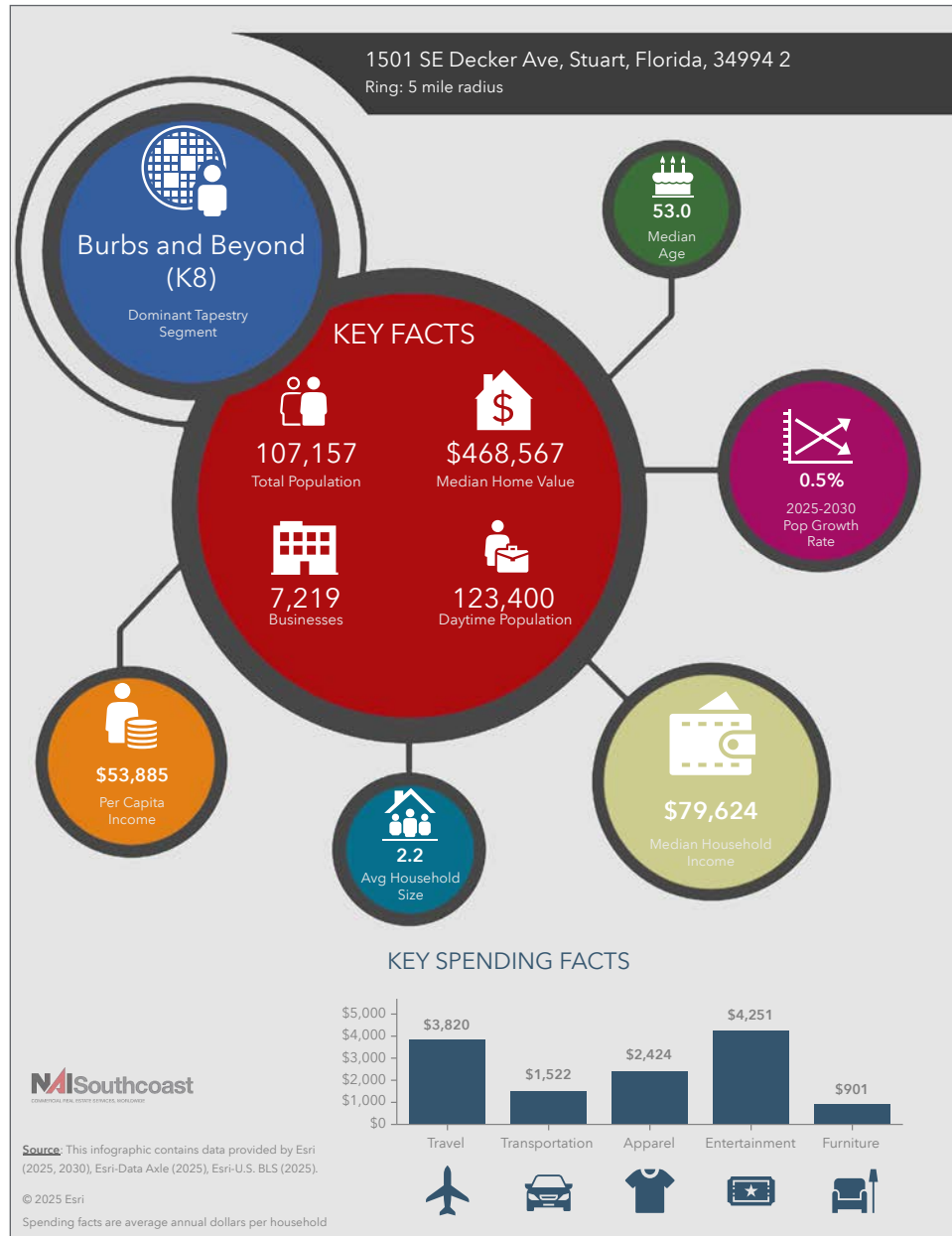


5 Minutes	10 Minutes	15 Minutes
8,346 2010 Population	40,260 2010 Population	91,733 2010 Population
9,731 2025 Population	45,998 2025 Population	104,015 2025 Population
16.5% 2010-2025 Population Growth	14.2% 2010-2025 Population Growth	13.3% 2010-2025 Population Growth
0.43% 2025-2030 (Annual) Est. Population Growth	0.42% 2025-2030 (Annual) Est. Population Growth	0.47% 2025-2030 (Annual) Est. Population Growth
47.8 2025 Median Age	51.2 2025 Median Age	52.8 2025 Median Age
\$78,252 Average Household Income	\$97,349 Average Household Income	\$114,090 Average Household Income
40.7% Percentage with Associates Degree or Better	44.2% Percentage with Associates Degree or Better	49.7% Percentage with Associates Degree or Better
56.0% Percentage in White Collar Profession	54.8% Percentage in White Collar Profession	61.9% Percentage in White Collar Profession

2,225 SF Industrial Condo Space

1501 SE Decker Ave, Stuart, FL 34994

2025 Demographics



Population

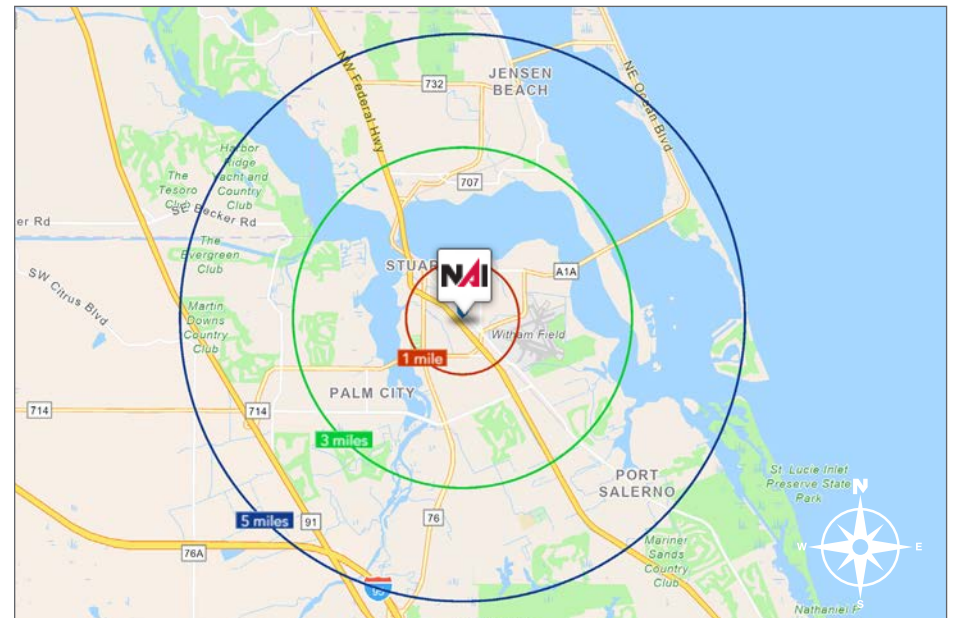
- 1 Mile: 9,081
- 3 Mile: 51,804
- 5 Mile: 107,157

Average Household Income

- 1 Mile: \$70,332
- 3 Mile: \$105,377
- 5 Mile: \$119,245

Median Age

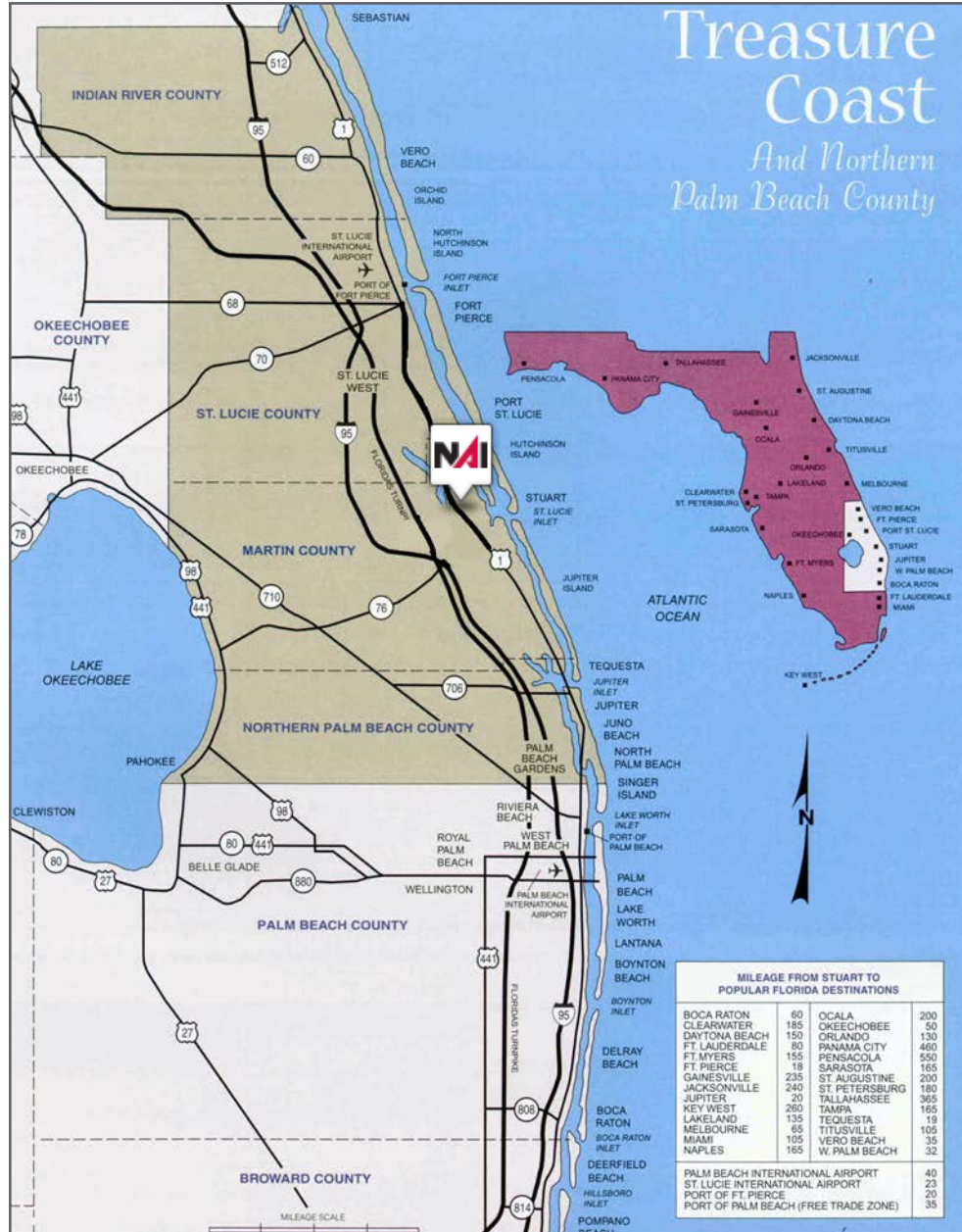
- 1 Mile: 47.7
- 3 Mile: 52.8
- 5 Mile: 53.0



2,225 SF Industrial Condo Space

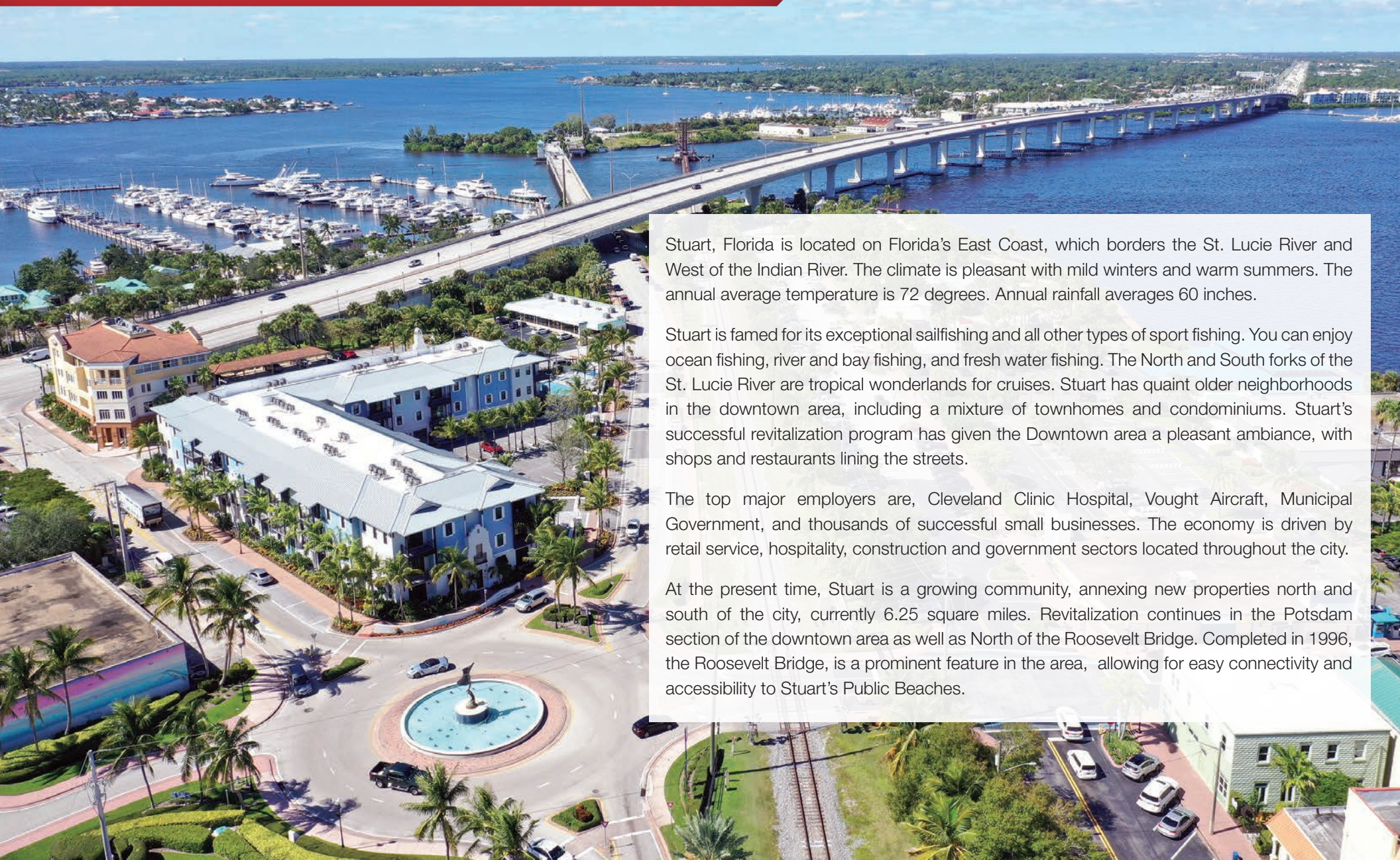
1501 SE Decker Ave, Stuart, FL 34994

Area Maps



City Overview

City of Stuart, Florida



Stuart, Florida is located on Florida's East Coast, which borders the St. Lucie River and West of the Indian River. The climate is pleasant with mild winters and warm summers. The annual average temperature is 72 degrees. Annual rainfall averages 60 inches.

Stuart is famed for its exceptional sailfishing and all other types of sport fishing. You can enjoy ocean fishing, river and bay fishing, and fresh water fishing. The North and South forks of the St. Lucie River are tropical wonderlands for cruises. Stuart has quaint older neighborhoods in the downtown area, including a mixture of townhomes and condominiums. Stuart's successful revitalization program has given the Downtown area a pleasant ambiance, with shops and restaurants lining the streets.

The top major employers are, Cleveland Clinic Hospital, Vought Aircraft, Municipal Government, and thousands of successful small businesses. The economy is driven by retail service, hospitality, construction and government sectors located throughout the city.

At the present time, Stuart is a growing community, annexing new properties north and south of the city, currently 6.25 square miles. Revitalization continues in the Potsdam section of the downtown area as well as North of the Roosevelt Bridge. Completed in 1996, the Roosevelt Bridge, is a prominent feature in the area, allowing for easy connectivity and accessibility to Stuart's Public Beaches.

County Overview

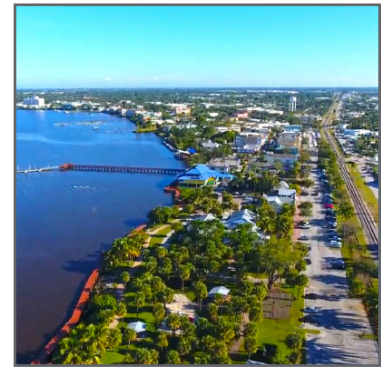
Martin County, Florida

The cities that make up Martin County are Jensen Beach/Rio, Stuart/Sewall's Point, Hutchinson Island, Hobe Sound, Jupiter/ Tequesta, Palm City, Port Salerno and Indiantown. Martin County is a wonderful place to visit and live, with beaches, golf, fishing and boating. The County boasts arts amenities, quaint downtowns with shops, gourmet dining and galleries, museums, historic places, festivals and more.

Martin County is for...

The golf enthusiast... Martin County is home to over 35 world-class golf courses all within a 15-mile radius. The sun worshiper... The County offers its visitors and residents alike some of the finest beaches on the east coast. The discriminating arts shopper... More than 20 galleries participate in a monthly First Thursday gallery night. Many of these galleries are in the historic downtowns of Stuart, Jensen Beach, Port Salerno and Hobe Sound. The music lover... The historic Lyric Theatre offers a wide-array of first class talent nearly 300 days a year... This acoustically amazing theatre features concerts for all music lovers, from classical to rock and roll, and theatrical performances by local and national talent.

For the die-hard festivals-goer... There are plenty to choose from and during the best Florida weather you can find. The Port Salerno Seafood Festival, Bookmania, ArtsFest, Pineapple Festival or one of the many festivals throughout the year. The Treasure Coast Children's Museum is a great place for the kids located at Indian Riverside Park which has a fabulous water play area, fishing, and a riverfront view. Often, there are also events in the park including concerts, orchid shows, and more. Indian Riverside Park also features the Maritime and Yachting Museum. Hutchinson Island houses the Elliott Museum which focuses on art, history and technology. Named after prolific inventor Sterling Elliott, the museum houses permanent including Model AA Trucks, early transportation, history of Stuart and surrounding regions and baseball memorabilia. For the more scientifically minded and curious kids, the Florida Oceanographic Coastal Center which offers a fun opportunity to learn more about our local ecosystem and even feed a stingray!





Nikolaus M. Schroth, CCIM

Principal | Broker Associate
+1 772 286 6292
nikschroth@naisouthcoast.com



J. Jeffery Allman, Jr.

Principal | Broker Associate
+1 772 286-6292 c +1 772 283 1555
jeff@naisouthcoast.com



James McKinney

Sales Associate
+1 772 349 3414
jamesmckinney@naisouthcoast.com

2,225 SF Industrial Condo Space 1501 SE Decker Ave, Stuart, FL 34994



FOR SALE:
Unit 516/517: \$480,000

NAI Southcoast

www.naisouthcoast.com

NO WARRANTY OR REPRESENTATION, EXPRESS OR IMPLIED, IS MADE AS TO THE ACCURACY OF THE INFORMATION CONTAINED HEREIN, AND THE SAME IS SUBMITTED SUBJECT TO ERRORS, OMISSIONS, CHANGE OF PRICE, RENTAL OR OTHER CONDITIONS, PRIOR SALE, LEASE OR FINANCING, OR WITHDRAWAL WITHOUT NOTICE, AND OF ANY SPECIAL LISTING CONDITIONS IMPOSED BY OUR PRINCIPALS NO WARRANTIES OR REPRESENTATIONS ARE MADE AS TO THE CONDITION OF THE PROPERTY OR ANY HAZARDS CONTAINED THEREIN ARE ANY TO BE IMPLIED.