

## AVAILABLE SPACES

5420 WEBB ROAD



### Available Spaces

Space	Size	Term	Rate	Space Use	Condition	Available
C	3,381	5 Years	\$15.00 /sf/yr	Medical	Poor	Vacant

#### Location Overview

Located one block north of Hillsborough Avenue on Webb Road, this property sits in the heart of Town 'N' Country, a mature and established suburb of Tampa known for its strong residential base and thriving commercial activity. With easy access to Veterans Expressway, Tampa International Airport, and major roadways, this location is ideal for a medical or dental practice. The surrounding area features a diverse mix of retail centers, professional offices, and medical facilities, providing a built-in customer base and a well-connected business environment in one of Tampa's most stable suburban markets.

#### Office Description

This 3,381 SF office space is a prime opportunity for a medical or dental practice seeking a customizable layout. Previously used as a dental office, the space requires a full renovation but retains existing plumbing lines in the foundation, offering a head start on infrastructure.

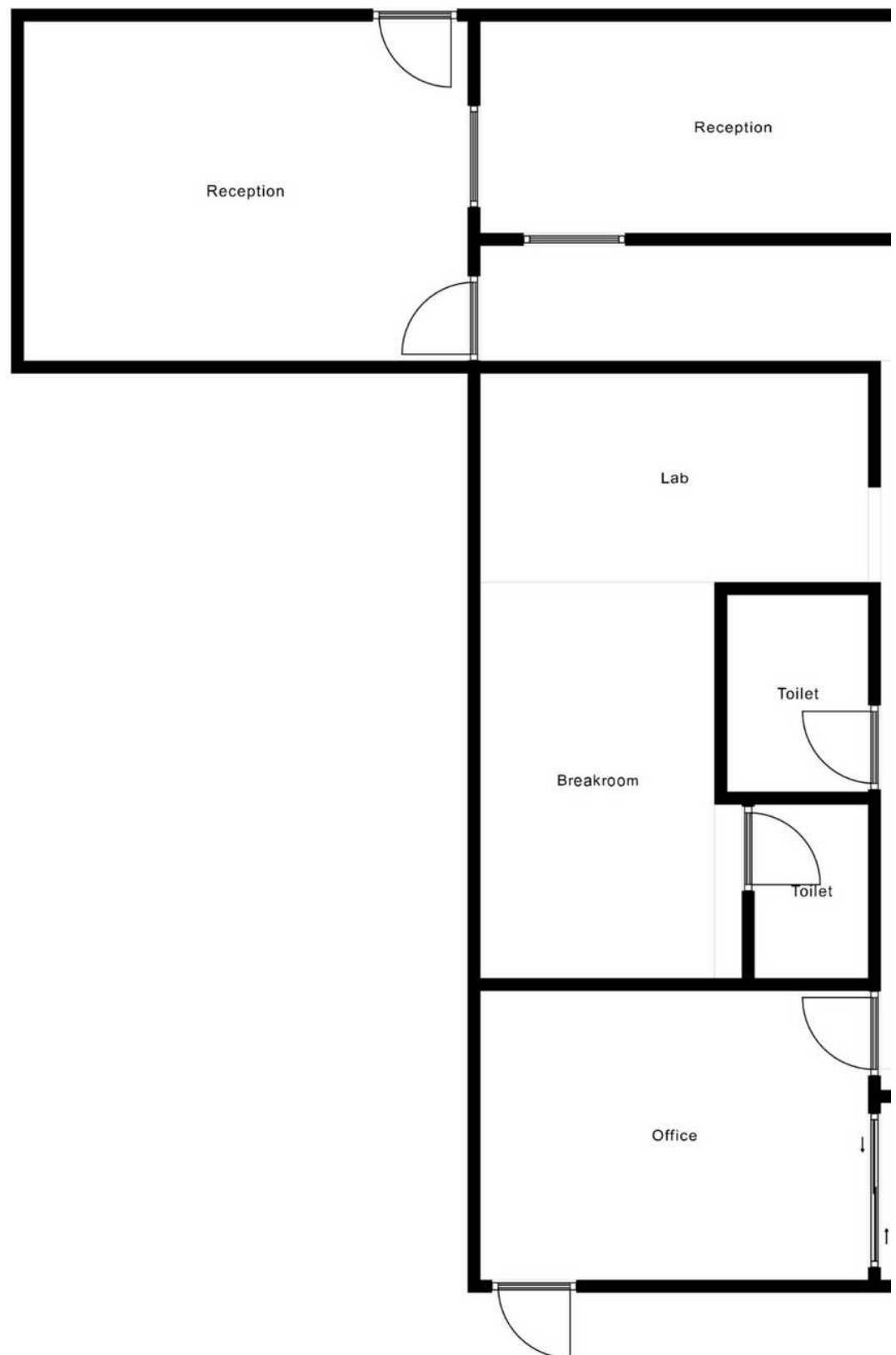
**KW COMMERCIAL**  
5101 Fruitville Road, Suite 102  
Sarasota, FL 34232

**DAVID KINNARD**  
Director  
O: (813) 417-2586  
C: (813) 417-2586  
dkinnard@kw.com

Each Office Independently Owned and Operated

## FLOOR PLAN

5420 WEBB ROAD



**KW COMMERCIAL**  
5101 Fruitville Road, Suite 102  
Sarasota, FL 34232

**DAVID KINNARD**  
Director  
O: (813) 417-2586  
C: (813) 417-2586  
dkinnard@kw.com

Each Office Independently Owned and Operated



## PROPERTY PHOTOS

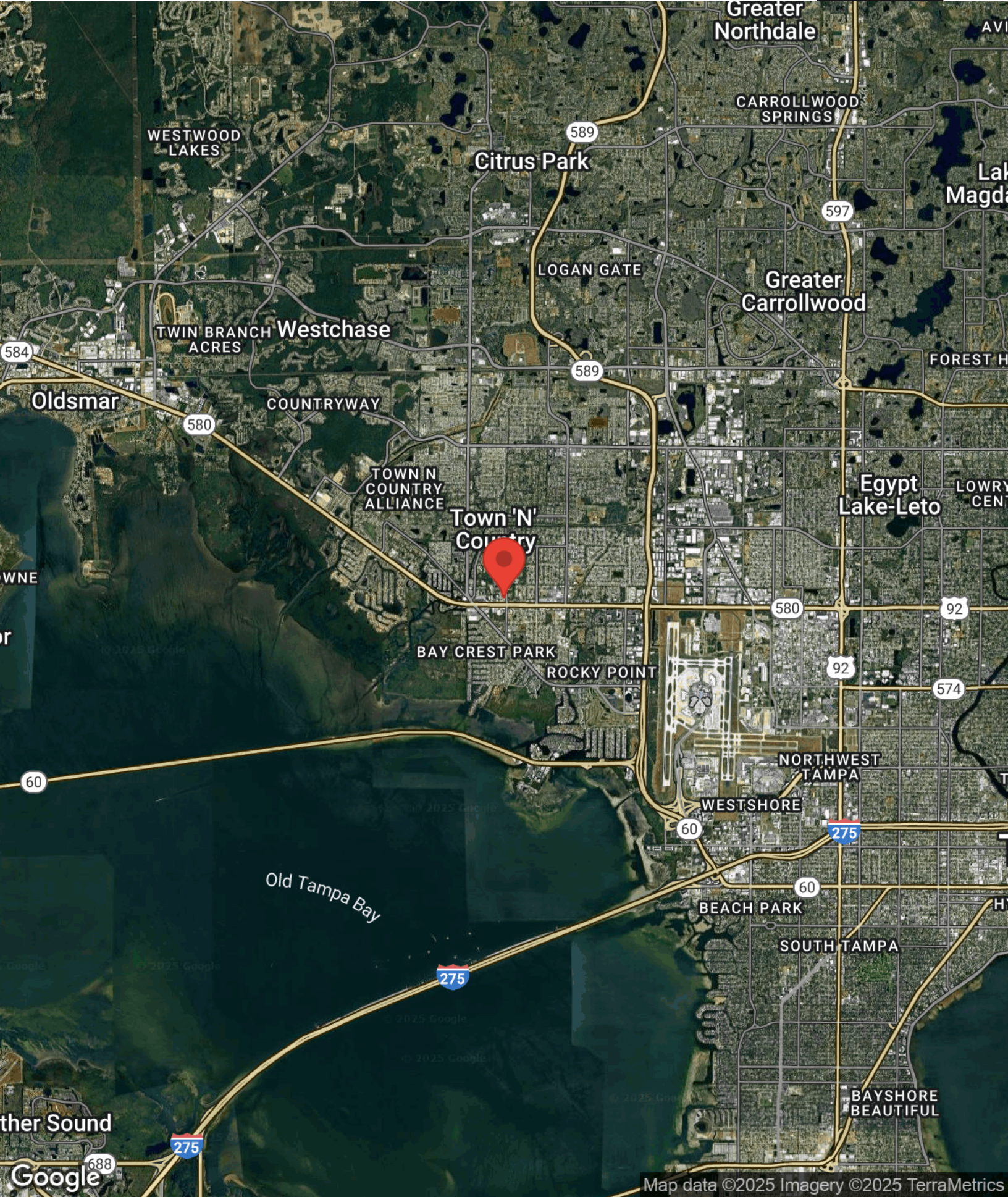
5420 WEBB ROAD





REGIONAL MAP

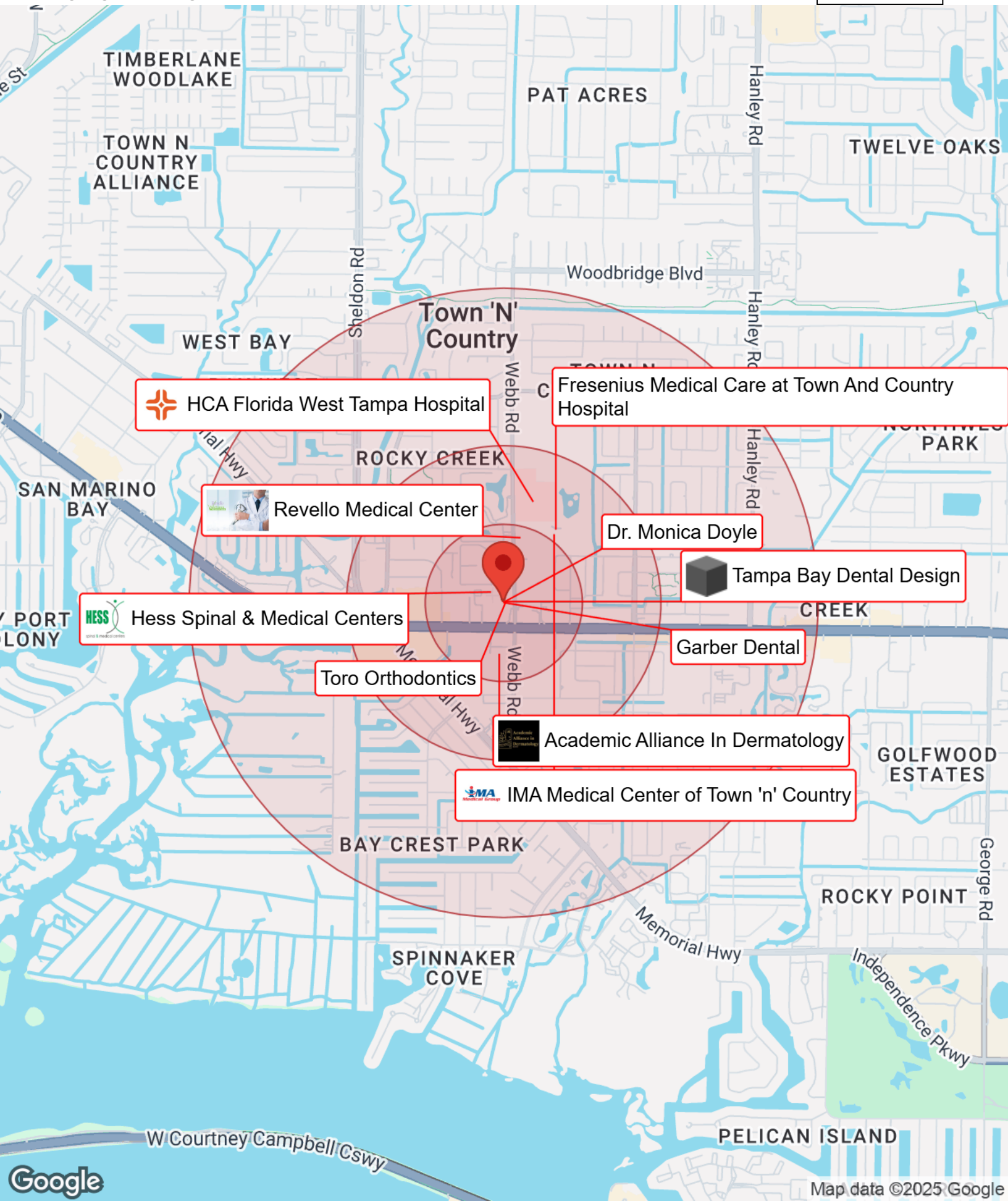
5420 WEBB ROAD





# BUSINESS MAP

5420 WEBB ROAD



HCA Florida West Tampa Hospital

Fresenius Medical Care at Town And Country Hospital



Revello Medical Center

Dr. Monica Doyle



Tampa Bay Dental Design



Hess Spinal & Medical Centers

Toro Orthodontics

Garber Dental



Academic Alliance In Dermatology



IMA Medical Center of Town 'n' Country