

MEDICAL OFFICE TIMSHARE

1101 N CENTRAL AVE, KISSIMMEE, FL 34741

Kissimmee Medical Office Timeshare



OFFERING SUMMARY

Lease Rate:	Negotiable
Building Size:	4,158 SF +/-
Available SF:	1,500 SF +/-
Year Built:	1965
Zoning:	T5-M

PROPERTY OVERVIEW

A move in ready medical office building is available for TIMESHARE right in the heart of the Kissimmee Medical Arts District. The property is a 4,158 SF +/- medical office condo that has 3 exam rooms and a doctors office available on Tuesday and Thursday to lease. Three bathrooms, a break room, and reception are all available to be shared.

The property is occupied by Orlando Pain Solutions and only utilizes a portion of the property on Tuesdays and Thursdays. This is a great opportunity for synergistic practices like neurologists, orthopedics, physical therapists, etc that are looking to open a satellite campus in Kissimmee. There is plenty of parking available. N Central is a main thoroughfare of Kissimmee and the property is adjacent to HCA Osceola Hospital.

PROPERTY HIGHLIGHTS

- Medical Office TIMESHARE (Available Tuesday & Thursday)
- Includes 3 Exam Rooms, Doctors Office, a Shared Breakroom, and a Shared Reception
- ALL Utilities and Internet in Fee
- Adjacent to HCA Osceola Hospital
- Access to E Oak St (5,5000 Annual Average Daily Traffic)
- Plenty of Parking!

PRESENTED BY
DANIELLE KOVIE

407.214.4846

dkovie@millenia-partners.com

OFFICE BUILDING

For Lease

ADDITIONAL PHOTOS

1101 N CENTRAL AVE, KISSIMMEE, FL 34741

Kissimmee Medical Office Timeshare



PRESENTED BY
DANIELLE KOVIE

407.214.4846

dkovie@millenia-partners.com

OFFICE BUILDING

For Lease

FLOOR PLAN

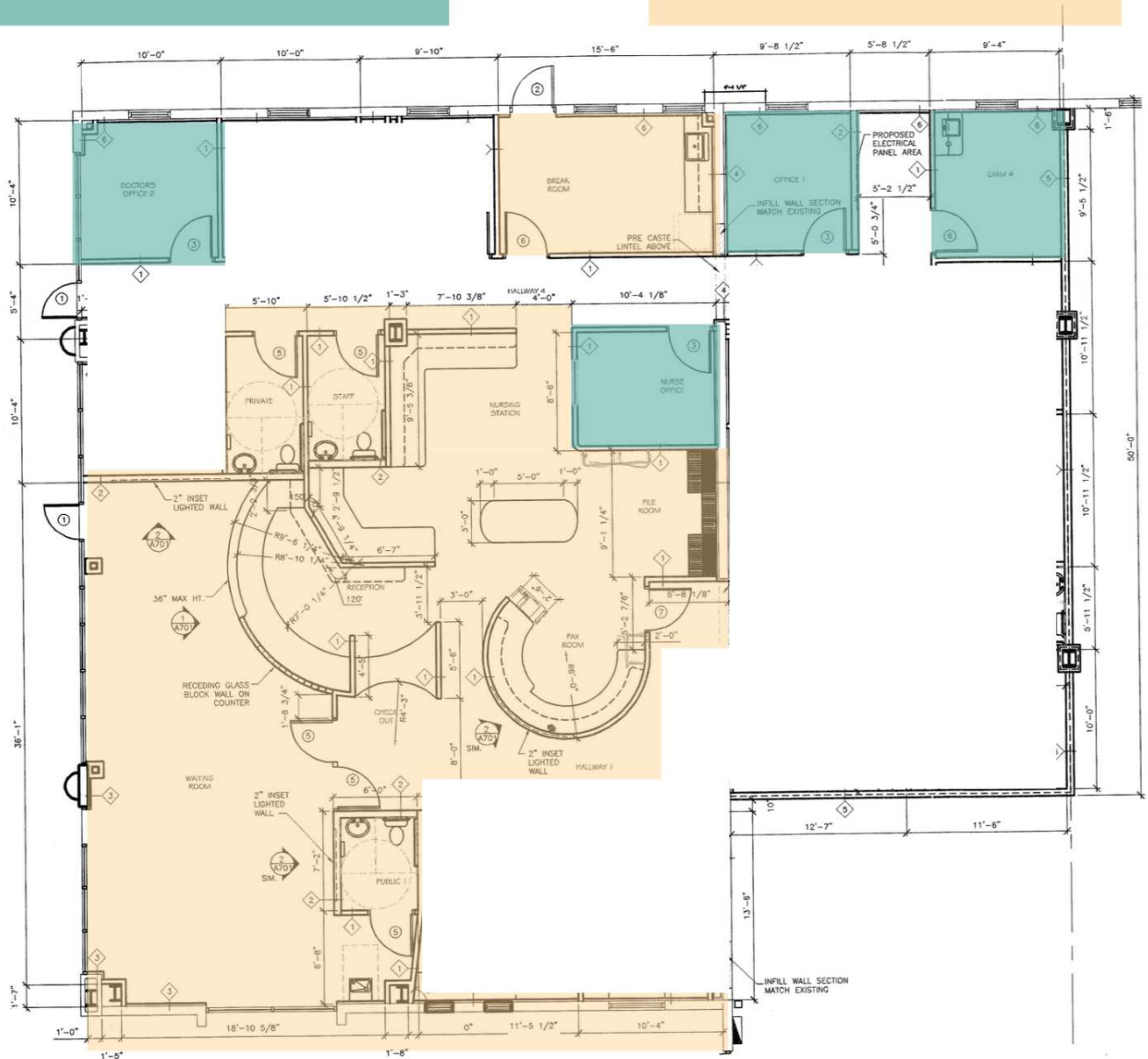
1101 N CENTRAL AVE, KISSIMMEE, FL 34741

Kissimmee Medical Office Timeshare



AVAILABLE

SHARED



PRESENTED BY
DANIELLE KOVIE

407.214.4846

dkovie@millenia-partners.com

OFFICE BUILDING

For Lease

LOCATION MAP

1101 N CENTRAL AVE, KISSIMMEE, FL 34741

Kissimmee Medical Office Timeshare



Map data ©2025 Google Imagery ©2025 Airbus,
Maxar Technologies

PRESENTED BY
DANIELLE KOVIE

407.214.4846

dkovie@millenia-partners.com

OFFICE BUILDING

For Lease

DEMOGRAPHICS MAP & REPORT

1101 N CENTRAL AVE, KISSIMMEE, FL 34741

Kissimmee Medical Office Timeshare



POPULATION	0.3 MILES	0.5 MILES	1 MILE
Total Population	263	1,990	11,790
Average Age	44	41	40
Average Age (Male)	39	39	38
Average Age (Female)	48	44	42

HOUSEHOLDS & INCOME	0.3 MILES	0.5 MILES	1 MILE
Total Households	78	671	4,184
# of Persons per HH	3.4	3	2.8
Average HH Income	\$49,103	\$50,885	\$52,037
Average House Value	\$240,848	\$275,526	\$246,823

Demographics data derived from AlphaMap

PRESENTED BY
DANIELLE KOVIE

407.214.4846

dkovie@millenia-partners.com

OFFICE BUILDING

For Lease