

550

451/COMMERCE P A R K

APOPKA, FL

New Class-A Industrial Park

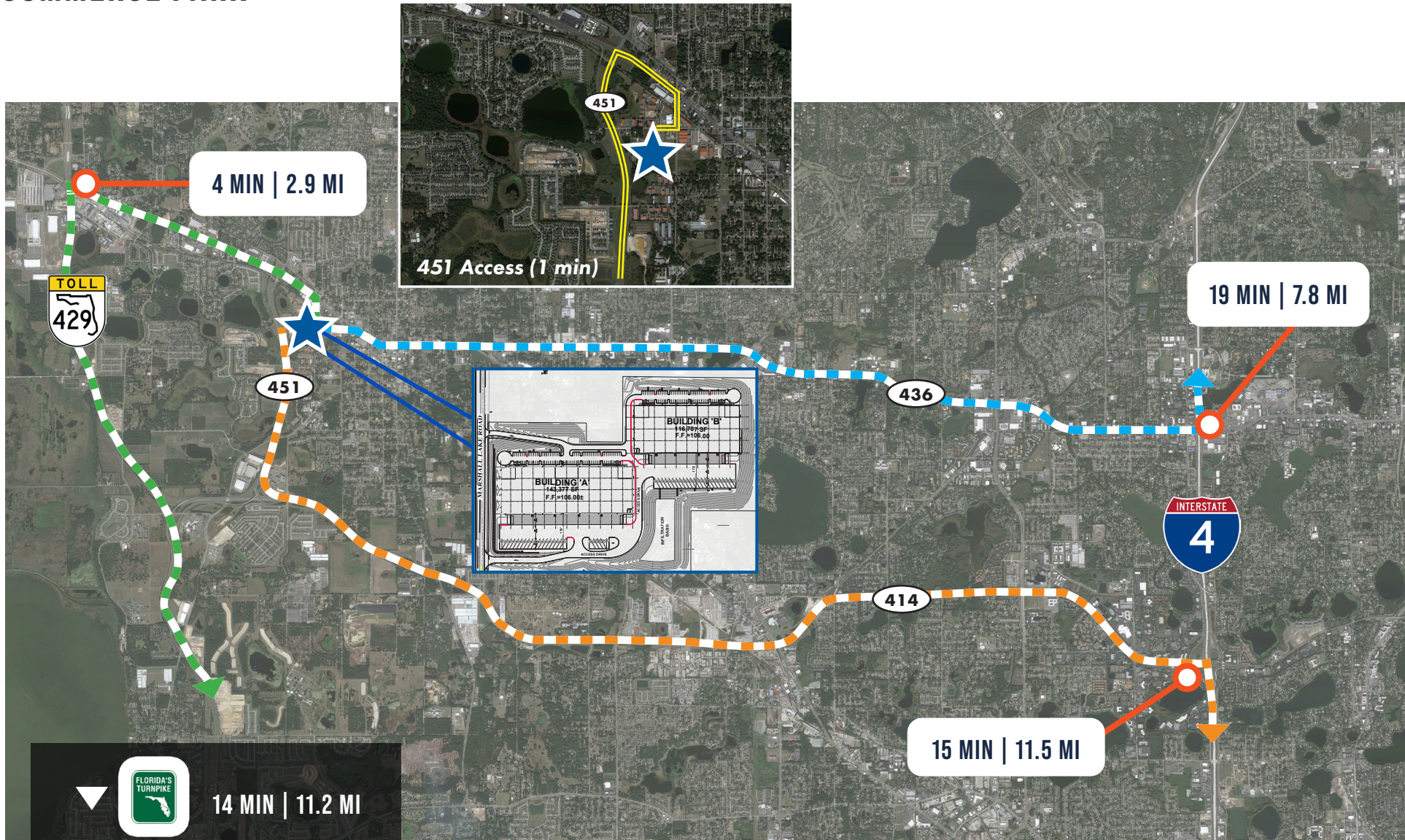
550-650 MARSHALL LAKE ROAD

► UP TO 117,319 SF AVAILABLE FOR LEASE

APOPKA, FL

451 COMMERCE PARK

±58,107 - 117,319 RSF AVAILABLE FOR LEASE



FOR MORE INFORMATION, PLEASE CONTACT:

JUSTIN RUBY, SIOR, CCIM | 407.540.7727

Justin.Ruby@foundrycommercial.com
Licensed Real Estate Broker

JOEY WOODMAN | 407.748.5888

Joey.Woodman@foundrycommercial.com
Licensed Real Estate Broker

TRAVIS HAMMOND | 407.401.1707

Travis.Hammond@foundrycommercial.com
Licensed Real Estate Broker



Although the information contained herein was provided by sources believed to be reliable, Foundry Commercial makes no representation, expressed or implied, as to its accuracy and said information is subject to errors, omissions or changes.

foundrycommercial.com

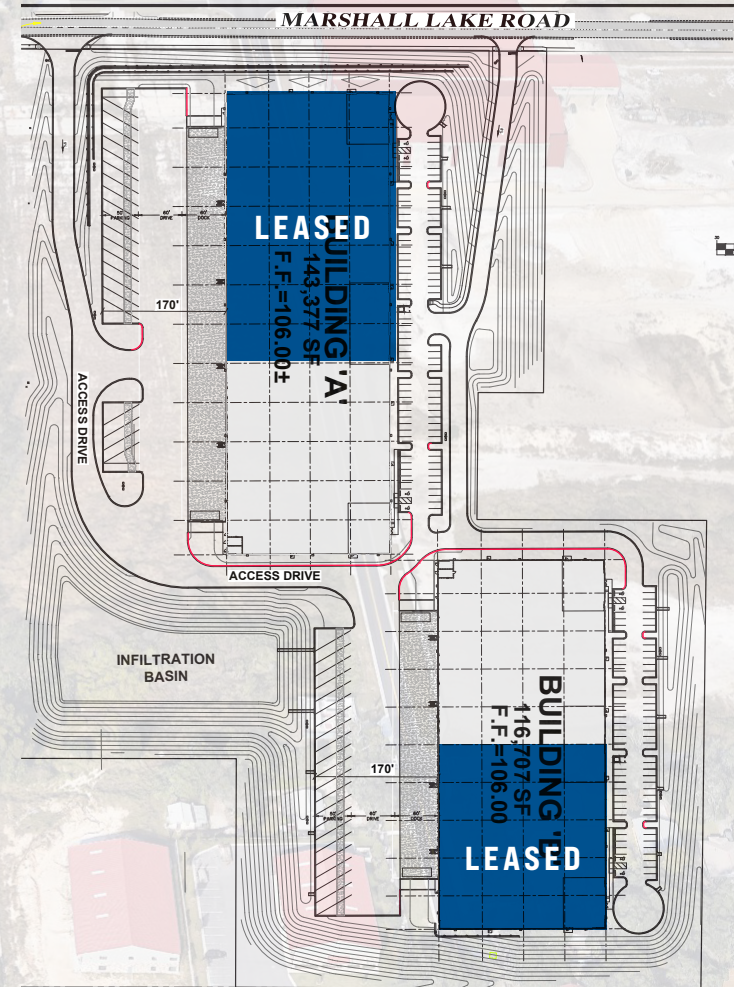
APOPKA, FL

451 COMMERCE PARK

±58,107 - 117,319 RSF AVAILABLE FOR LEASE

BUILDING SPECIFICATIONS

	BUILDING A	BUILDING B
TOTAL SF:	59,212 SF	58,107 SF
AVAILABLE:	IMMEDIATELY	IMMEDIATELY
BUILDING TYPE:	REAR LOAD	REAR LOAD
CLEAR:	32'	32'
PARKING:	39	38
TRAILER PARKING:	3	10
CONSTRUCTION TYPE:	TILT-WALL CONCRETE	TILT-WALL CONCRETE
ROOF TYPE:	45 MIL TPO	45 MIL TPO
DOCK HIGH DOORS:	14	12
DRIVE IN DOORS	1	1
BUILDING DEPTH:	226' BUILDING DEPTH	230' BUILDING DEPTH
TRUCK COURT DEPTH:	170' TRUCK COURT	170' TRUCK COURT
COLUMN SPACING	55' X 54' W 60' SPEED BAY	56' X 52' W 60' SPEED BAY



FOR MORE INFORMATION, PLEASE CONTACT:

JUSTIN RUBY, SIOR, CCIM | 407.540.7727

Justin.Ruby@foundrycommercial.com
Licensed Real Estate Broker

JOEY WOODMAN | 407.748.5888

Joey.Woodman@foundrycommercial.com
Licensed Real Estate Broker

TRAVIS HAMMOND | 407.401.1707

Travis.Hammond@foundrycommercial.com
Licensed Real Estate Broker



Although the information contained herein was provided by sources believed to be reliable, Foundry Commercial makes no representation, expressed or implied, as to its accuracy and said information is subject to errors, omissions or changes.

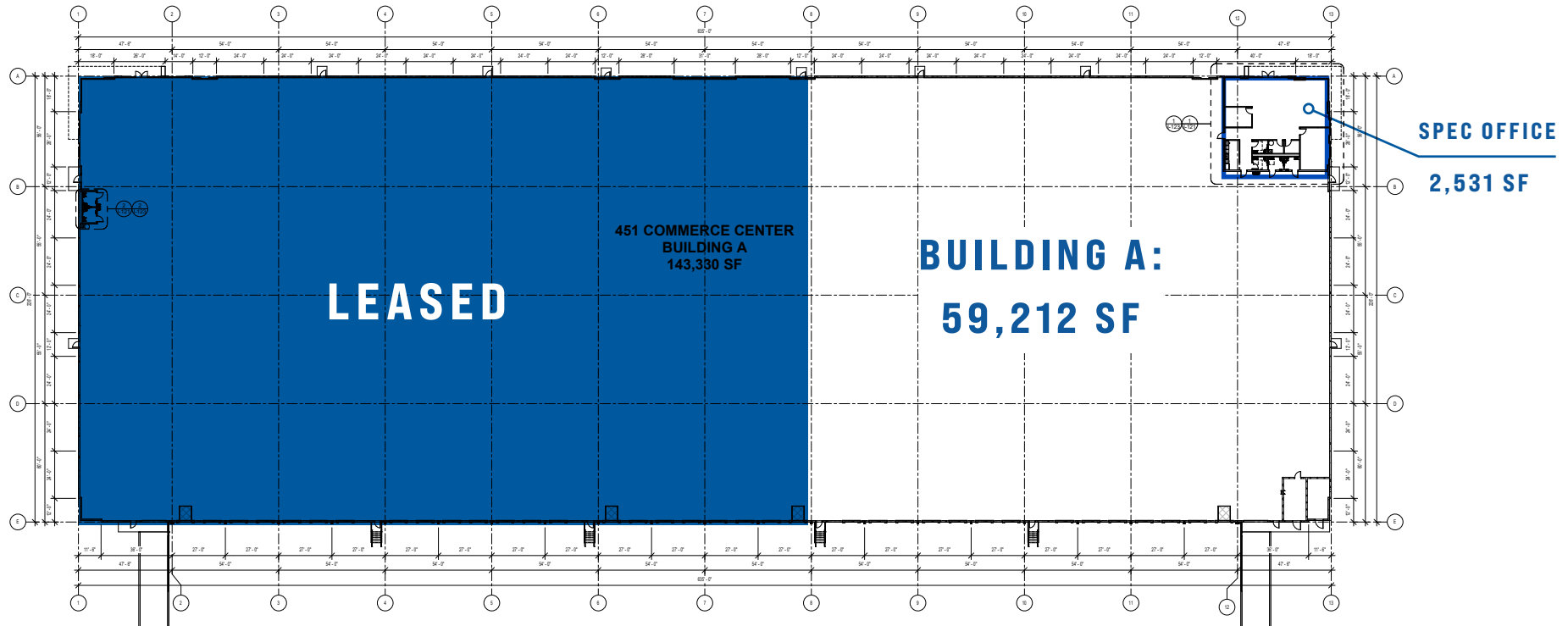
foundrycommercial.com

APOPKA, FL

451 COMMERCE PARK

±58,107 - 117,319 RSF AVAILABLE FOR LEASE

BUILDING A FLOOR PLAN



FOR MORE INFORMATION, PLEASE CONTACT:

JUSTIN RUBY, SIOR, CCIM | 407.540.7727

Justin.Ruby@foundrycommercial.com
Licensed Real Estate Broker

JOEY WOODMAN | 407.748.5888

Joey.Woodman@foundrycommercial.com
Licensed Real Estate Broker

TRAVIS HAMMOND | 407.401.1707

Travis.Hammond@foundrycommercial.com
Licensed Real Estate Broker



FOUNDry
COMMERCIAL

foundrycommercial.com

Although the information contained herein was provided by sources believed to be reliable, Foundry Commercial makes no representation, expressed or implied, as to its accuracy and said information is subject to errors, omissions or changes.

APOPKA, FL

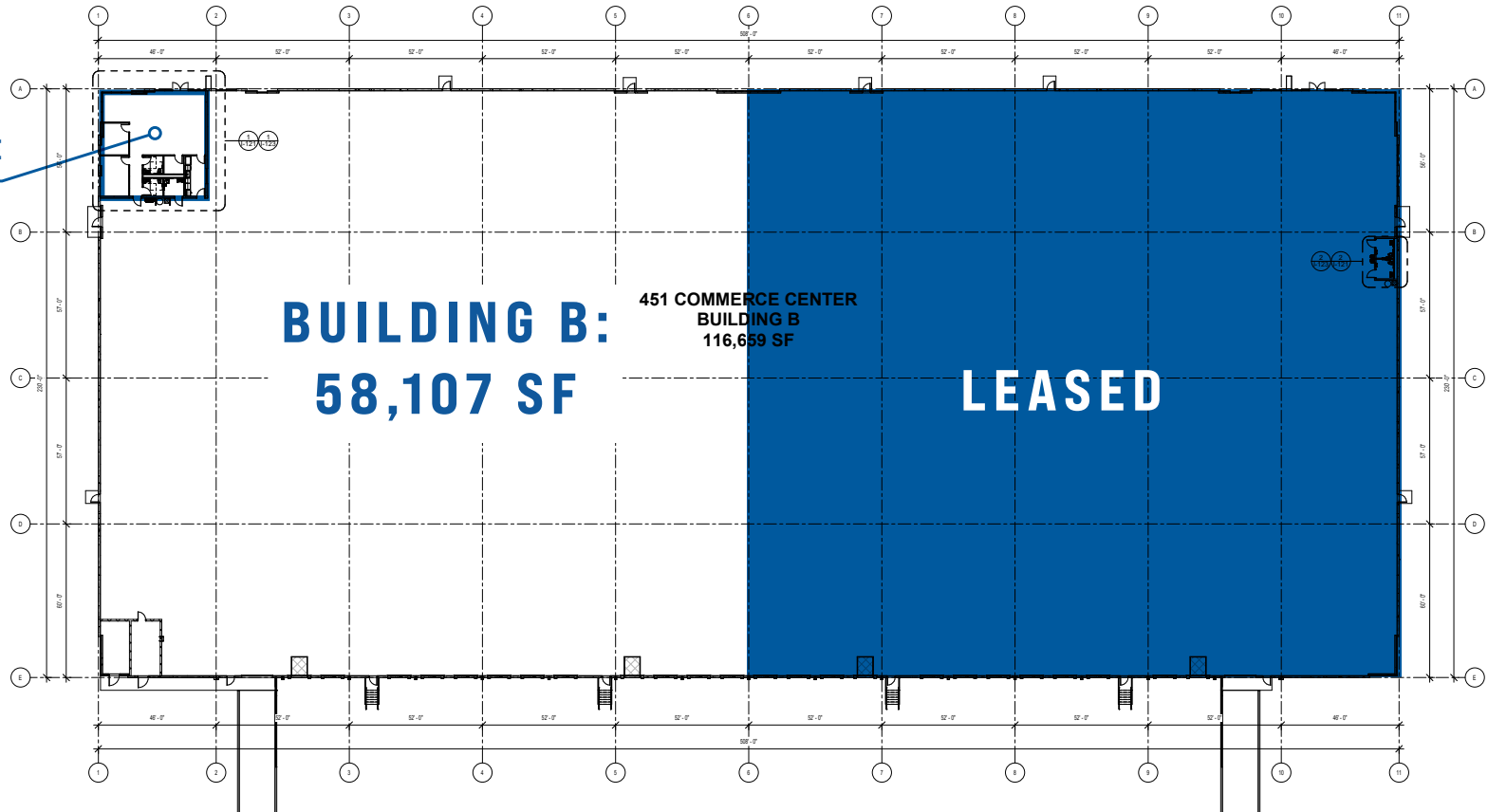
451 COMMERCE PARK

±58,107 - 117,319 RSF AVAILABLE FOR LEASE

BUILDING B FLOOR PLAN

SPEC OFFICE

1,731 SF



FOR MORE INFORMATION, PLEASE CONTACT:

JUSTIN RUBY, SIOR, CCIM | 407.540.7727

Justin.Ruby@foundrycommercial.com
Licensed Real Estate Broker

JOEY WOODMAN | 407.748.5888

Joey.Woodman@foundrycommercial.com
Licensed Real Estate Broker

TRAVIS HAMMOND | 407.401.1707

Travis.Hammond@foundrycommercial.com
Licensed Real Estate Broker



FOUNDry
COMMERCIAL

Although the information contained herein was provided by sources believed to be reliable, Foundry Commercial makes no representation, expressed or implied, as to its accuracy and said information is subject to errors, omissions or changes.

foundrycommercial.com

APOPKA, FL

451 COMMERCE PARK

PHOTOS

±58,107 - 117,319 RSF AVAILABLE FOR LEASE



FOR MORE INFORMATION, PLEASE CONTACT:

JUSTIN RUBY, SIOR, CCIM | 407.540.7727

Justin.Ruby@foundrycommercial.com
Licensed Real Estate Broker

JOEY WOODMAN | 407.748.5888

Joey.Woodman@foundrycommercial.com
Licensed Real Estate Broker

TRAVIS HAMMOND | 407.401.1707

Travis.Hammond@foundrycommercial.com
Licensed Real Estate Broker



Although the information contained herein was provided by sources believed to be reliable, Foundry Commercial makes no representation, expressed or implied, as to its accuracy and said information is subject to errors, omissions or changes.

foundrycommercial.com