

For Lease

# Professional Office Space

494 - 7,907 SF | \$26.50 - \$40.00 / SF



## 444 Seabreeze Blvd

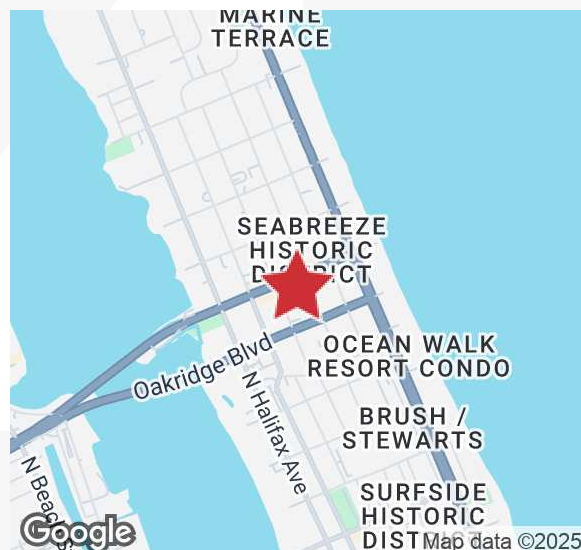
Daytona Beach, Florida 32118

### Property Highlights

- Daytona's most professional, upscale office address
- Views of the Atlantic Ocean & Intracoastal Waterway
- Walking distance from restaurants and beachside commercial district
- Close to A1A, courthouse facilities, city offices, downtown Daytona, hospitals and lodging
- New Renaissance by Marriott hotel and conference center just opened two blocks east of the property
- Ample parking for employees and visitors

### OFFERING SUMMARY

Available SF	494 - 7,907 SF
Building Size	122,330 SF



**Lease Rate: \$26.50 - \$40.00/SF Full Service**

For more information

**Brian Adair**

O: 386 506 0025

badair@realvest.com

# Available Spaces

## LEASE INFORMATION

Lease Type:	Full Service	Lease Term:	Negotiable
Total Space:	494 - 7,907 SF	Lease Rate:	\$26.50 - \$40.00 SF/yr

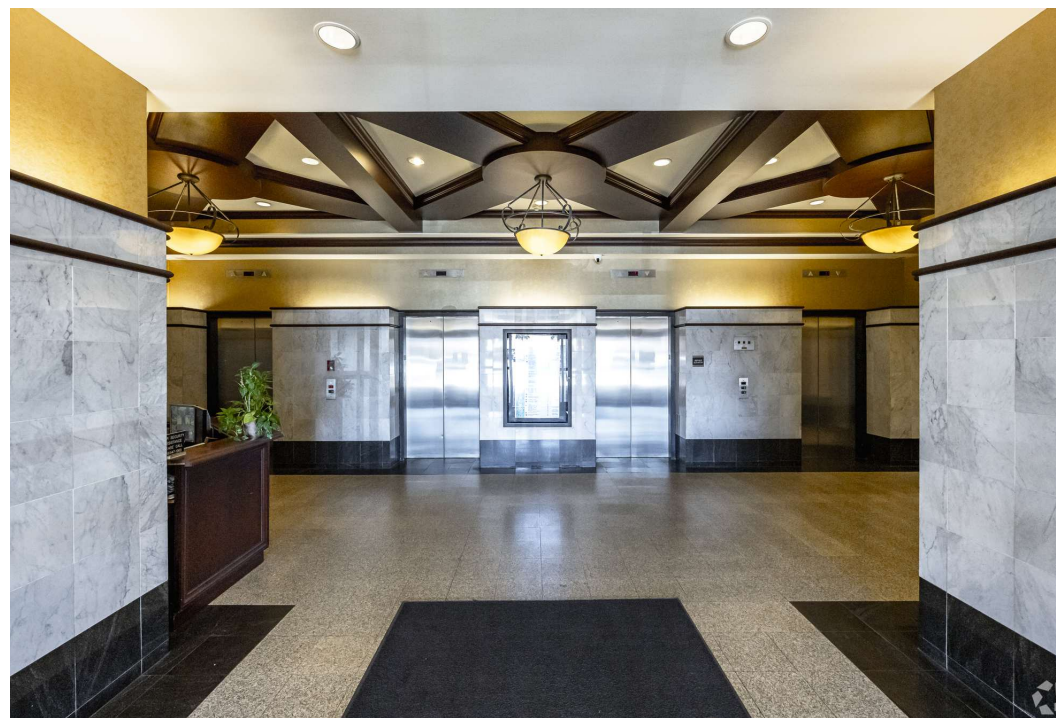
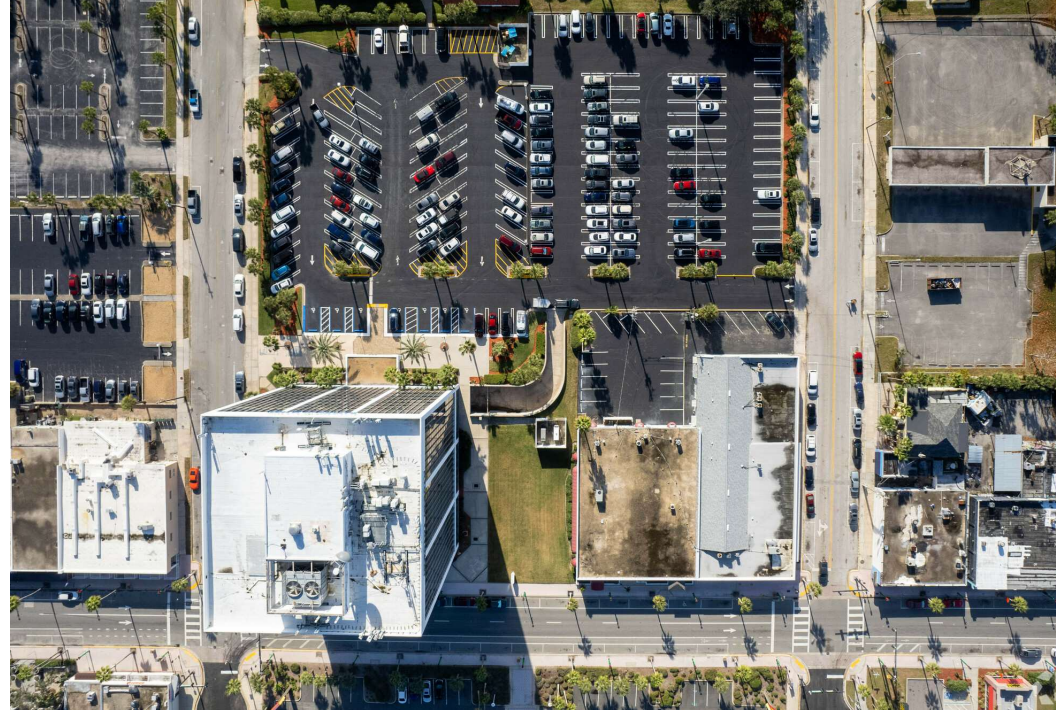
## AVAILABLE SPACES

SUITE	SIZE (SF)	LEASE TYPE	LEASE RATE	DESCRIPTION
Suite 300	7,907 SF	Full Service	\$26.50 SF/yr	Intracoastal view
Suite 435	712 SF	Full Service	\$28.00 SF/yr	-
Suite 460	706 SF	Full Service	\$28.00 SF/yr	-
Suite 470	1,390 SF	Full Service	\$30.00 SF/yr	Immediately available
Suite 617	494 SF	Full Service	\$30.00 SF/yr	-
Suite 625	1,763 SF	Full Service	\$30.00 SF/yr	Intracoastal view
Suite 670	1,225 SF	Full Service	\$30.00 SF/yr	-
Suite 705	1,122 SF	Full Service	\$32.00 SF/yr	Ocean, Intracoastal and Downtown views
Suite 730	1,842 SF	Full Service	\$32.00 SF/yr	-
Suite 740	1,271 SF	Full Service	\$30.00 SF/yr	-
Suite 760	527 SF	Full Service	\$32.00 SF/yr	Ocean view
Suite 770	1,305 SF	Full Service	\$32.00 SF/yr	-
Suite 860	1,063 SF	Full Service	\$32.00 SF/yr	Ocean view
Suite 1000	6,989 SF	Full Service	\$40.00 SF/yr	Ocean view
Suite 1002	2,160 SF	Full Service	\$40.00 SF/yr	-

Modified gross rent includes common area maintenance (CAM), real estate taxes and insurance, as well as electricity, water and janitorial expenses, over a base year. Tenant is responsible for its pro rata share of expense increases after the base year.



## Property Photos





## Location Maps

