

Lot 6 N. Seminary Ave.

Woodstock, IL 60098

For Sale

MLS #11676693

LAND



LAND

0.85 ACRE

\$169,500

(\$4.58 PSF)

Route 47 Frontage Near County Courthouse:

.85 Acre level lot with 98' of frontage on busy Seminary Avenue (Route 47) with 16,400 vehicles per day. Located just south of McHenry County Courthouse.

Multiple uses including retail, restaurant, professional office, medical or mixed use. Zoned B2 General Business District. \$4.58 psf.

16,400 VPD on Route 47.

Demographics	1 Mile	3 Miles	5 Miles
Total Population	7,821	23,753	35,854
Average HH Income	\$100,755	\$99,965	\$105,765

Specifications

Description:	Commercial Land
Land Size:	0.85 Acres (37,026 SF)
Topography:	Level/Cleared
Environmental Status:	TBD
Utilities:	To Site
Sewer/Water:	To Site/Nearby
Frontage Dimensions:	98' (Route 47)
Zoning:	B2 (General Business)
Taxes:	\$2,565.66 (2024)
PIN #:	08-32-251-017

[CLICK HERE TO VIEW OUR WEBSITE](#)

No warranty or representation is made as to the accuracy of the foregoing information. Terms of sale or lease and availability are subject to change or withdrawal without notice. This document is for information purposes only. No offer of sub-agency is being made.



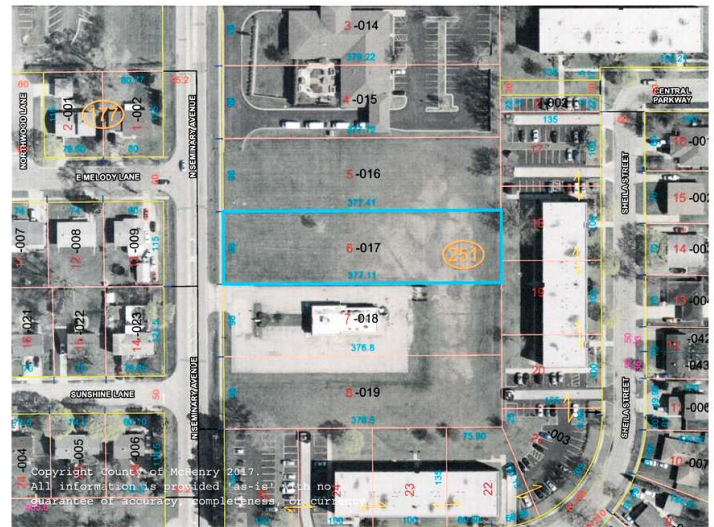
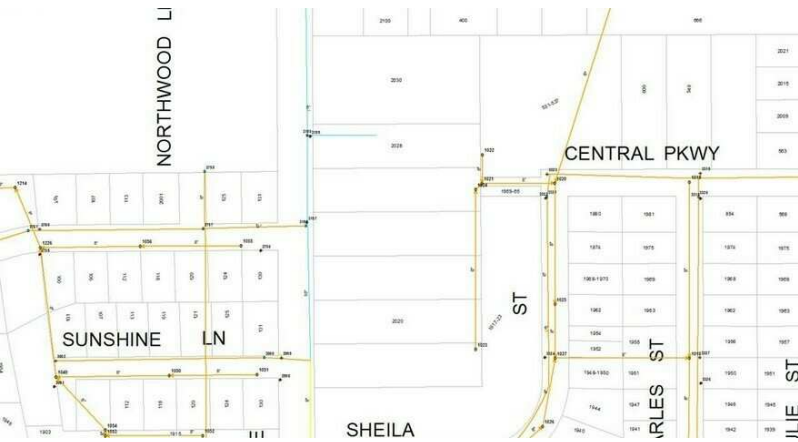
President / Designated Managing Broker
Heather Schweitzer
HeatherS@PremierCommercialRealty.com
O: 847.854.2300 x15 C: 815.236.9816

Lot 6 N. Seminary Ave.

Woodstock, IL 60098

For Sale

LAND



[CLICK HERE TO VIEW OUR WEBSITE](#)

No warranty or representation is made as to the accuracy of the foregoing information. Terms of sale or lease and availability are subject to change or withdrawal without notice. This document is for information purposes only. No offer of sub-agency is being made.



President / Designated Managing Broker
Heather Schweitzer
HeatherS@PremierCommercialRealty.com
O: 847.854.2300 x15 C: 815.236.9816

www.PremierCommercialRealty.com | 847.854.2300 | 9225 S. Route 31, Lake in the Hills, IL 60156