

FOR LEASE



4411 Rowan Rd | New Port Richey, FL 34653

Lease Rate | \$21.00 per SF NNN

- 3,382 sf +/- end cap office space available for immediate occupancy
- Floor plan includes a spacious lobby, 8 private offices, large conference room, 2 private bathrooms, and break room
- Beautiful setting, backs to a pond and surrounded by an established residential community
- Adjacent to John Hopkins All Children's Outpatient Clinic and several other medical / dental professionals
- Great location on Rowan Road with easy access at a signalized intersection
- Excellent visibility & plenty of parking in a well-maintained and professionally managed office park

Summer Lakes Professional Center

Heidi Tuttle-Beisner, CCIM
Broker/Owner
htuttle@cap-realty.com

Lisa Ingram
Commercial Associate
lingram@cap-realty.com

Cell: (727) 946 - 7973
Office: (727) 376 - 4900
cap-realty.com



**COMMERCIAL ASSET
PARTNERS**

4411 Rowan Rd | New Port Richey, FL 34653



Demographics | 5 Miles



180,140

Population



4%

Population Growth



\$69,610

Average HH Income



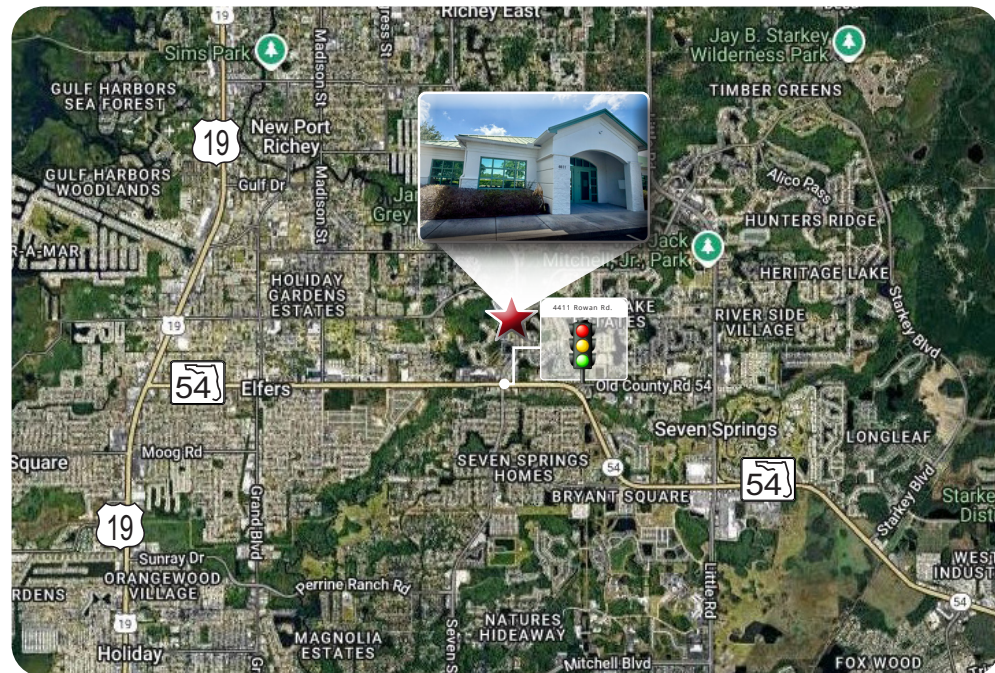
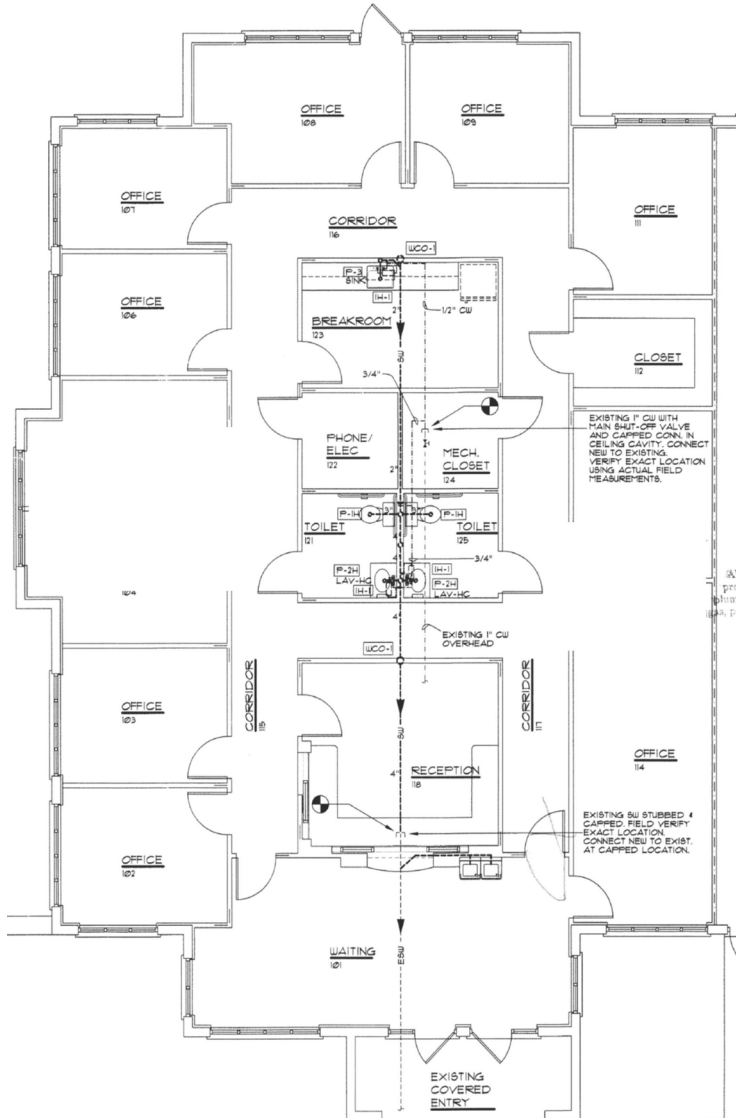
42.3

Average Age

PROPERTY FEATURES

4411 Rowan Rd | New Port Richey, FL 34653

SPACE PLAN | 3,382 SF



PROFESSIONAL CENTER

CAP-Realty.com
(727) 376-4900

Visit us @ www.cap-realty.com
LinkedIn | Facebook | Instagram
Follow CAPRealty @ /commercialassetpartnersrealty/



COMMERCIAL ASSET
PARTNERS