



**COLDWELL
BANKER
COMMERCIAL
PRIME PROPERTIES**

Sugar Beet Factory

FOR SALE

1101 Kimball Avenue, Grand Junction, CO 81501



PROPERTY DETAILS:

PRICE: **\$2,500,000**

FEATURES:

- 9,646 total SF in Grand Junction City
- Opportunity Zoned
- 1.12 AC Zoned CG for Commercial Use

AREA DESCRIPTION:

Located just North of Riverside Parkway in Las Colonias Park Proximity.

PROPERTY OVERVIEW



FOR MORE DETAILS CONTACT:

Mike Foster, CCIM | mfoster@cbcwest.com
Coldwell Banker Commercial Prime Properties

Cell 970-433-8374
Direct 970-244-6602

**131 N. 6th St., Suite 200
Grand Junction, CO 81501**

CBCWorldwide.com

©2015 Coldwell Banker Real Estate LLC, dba Coldwell Banker Commercial Affiliates.

All Rights Reserved. Coldwell Banker Real Estate LLC, dba Coldwell Banker Commercial Affiliates

fully supports the principles of the Equal Opportunity Act. Each Office is Independently Owned and Operated.

Coldwell Banker Commercial and the Coldwell Banker Commercial Logo are registered service marks owned

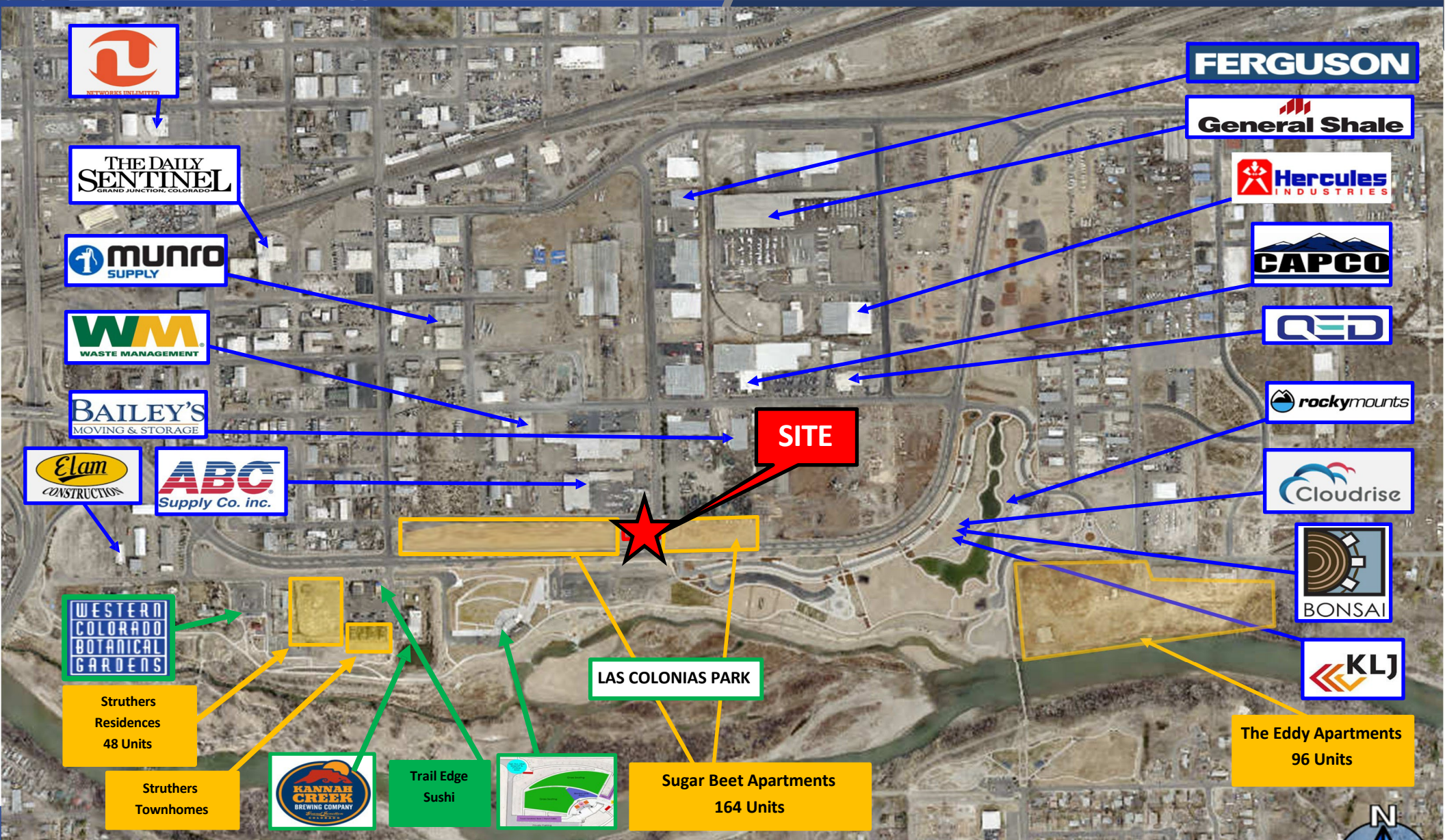
by Coldwell Banker Real Estate LLC, dba Coldwell Banker Commercial Affiliates.

CBCWest.com

Coldwell Banker Commercial and the Coldwell Banker Commercial Logo are registered service marks licensed to Coldwell Banker Real Estate LLC. Each Office is Independently Owned and Operated.



COLDWELL
BANKER
COMMERCIAL
PRIME PROPERTIES



LIVING/ Multi-Family

RETAIL, EVENTS & RECREATION

EMPLOYERS





**COLDWELL
BANKER
COMMERCIAL
PRIME PROPERTIES**





**COLDWELL
BANKER
COMMERCIAL
PRIME PROPERTIES**





This information has been secured from sources we believe to be reliable, but we make no representations or warranties, expressed or implied, as to the accuracy of the information. References to square footage or age are approximate. Buyer must verify the information and bears all risk for any inaccuracies.



**COLDWELL
BANKER
COMMERCIAL
PRIME PROPERTIES**

