

ARECIBO 6 ACRES OF DEVELOPMENT LAND



PROPERTY DESCRIPTION

Introducing a prime investment opportunity in Arecibo, PR - a strategically located property with exceptional potential for residential or industrial development. Spanning a flat topography, this expansive site comprises 5 adjacent parcels, offering the flexibility and space to accommodate diverse development needs. With direct access to State Road #2 and situated just off Highway 22 exit, this property boasts unparalleled accessibility. Zoned I-1, it presents a compelling opportunity for land and residential investors seeking a premium location with endless possibilities.

HIGHLIGHTS

- 5 adjacent/bounding parcels
- Off Highway 22 exit
- Direct access to State Road #2
- Flat Topography
- R-1 (Intermittent Residential) Zoning

OFFERING SUMMARY

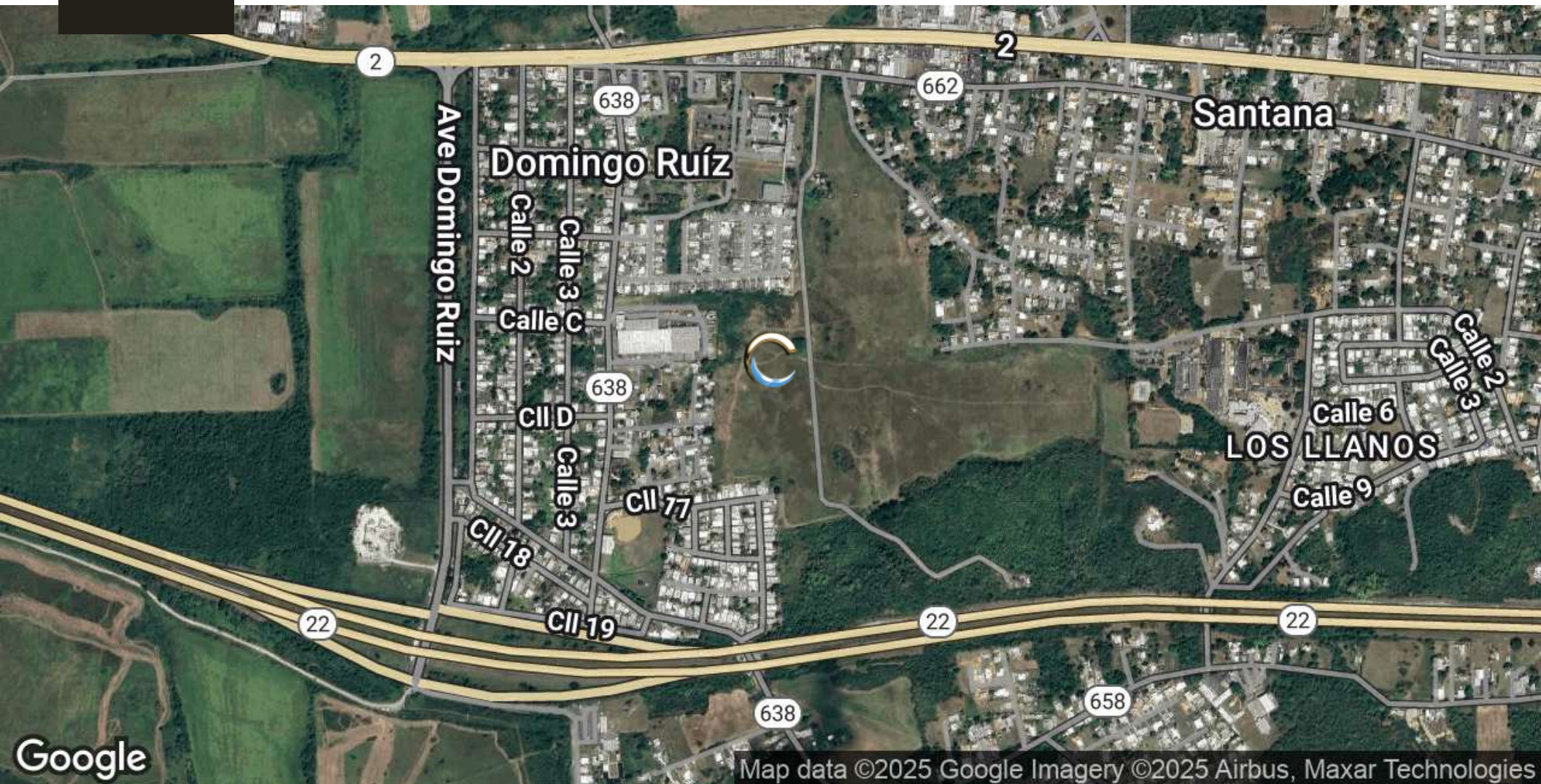
Sale Price:	Call for Information
Lot Size:	6 Acres

EMILIO L. FAGUNDO C-17305

787.607.9860

efagundo@caribbeancommercial.com

ARECIBO 6 ACRES OF DEVELOPMENT LAND



EMILIO L. FAGUNDO C-17305

787.607.9860

efagundo@caribbeancommercial.com