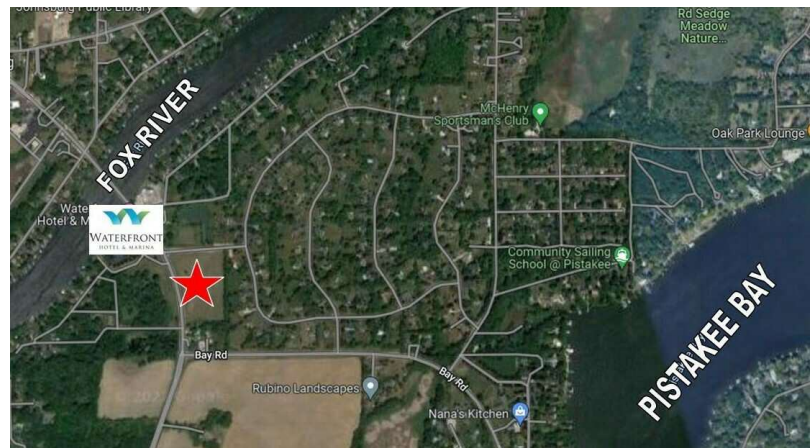


3118 Chapel Hill Rd.
Johnsburg, IL 60051

For Sale

MLS #12166907

LAND



LAND

1 ACRE

\$129,000

(2.96 PSF)

COMMERCIAL LAND
±1 ACRE (±7 acres possible)

Vacant commercial land very close to the popular Fox River and Pistakee Bay boating community and Chapel Hill Golf Club. Zoned B1, ideal for retail, specialty, entertainment use serving the local community and beyond. Just south of the river and other dining and entertainment venues.

Can be purchased along with surrounding parcels (listed separately) to achieve up to ±7 contiguous acres. Contact Broker for information.

10,150 VPD on Chapel Hill Road.

Demographics	1 Mile	3 Miles	5 Miles
Total Population	2,956	25,684	75,449
Average HH Income	\$131,316	\$124,559	\$116,036

Specifications

Description:	Commercial Land
Land Size:	1 Acre Up To +/- 7 AC Possible
Topography:	Flat
Environmental Status:	TBA
Utilities:	Nearby
Sewer/Water:	Well & Septic Required
Frontage Dimensions:	108'
Zoning:	B1
Taxes:	\$2,196.74 (2024)
PIN #:	10-18-356-006

[CLICK HERE TO VIEW OUR WEBSITE](#)

No warranty or representation is made as to the accuracy of the foregoing information. Terms of sale or lease and availability are subject to change or withdrawal without notice. This document is for information purposes only. No offer of sub-agency is being made.



www.PremierCommercialRealty.com | 847.854.2300 | 9225 S. Route 31, Lake in the Hills, IL 60156

Senior Broker
Michael Deacon
MichaelD@PremierCommercialRealty.com
O: 847.854.2300 x28 C: 815.814.6500

3118 Chapel Hill Rd.
Johnsburg, IL 60051

For Sale

LAND



[CLICK HERE TO VIEW OUR WEBSITE](#)

No warranty or representation is made as to the accuracy of the foregoing information. Terms of sale or lease and availability are subject to change or withdrawal without notice. This document is for information purposes only. No offer of sub-agency is being made.



www.PremierCommercialRealty.com | 847.854.2300 | 9225 S. Route 31, Lake in the Hills, IL 60156

Senior Broker
Michael Deacon
MichaelD@PremierCommercialRealty.com
O: 847.854.2300 x28 C: 815.814.6500