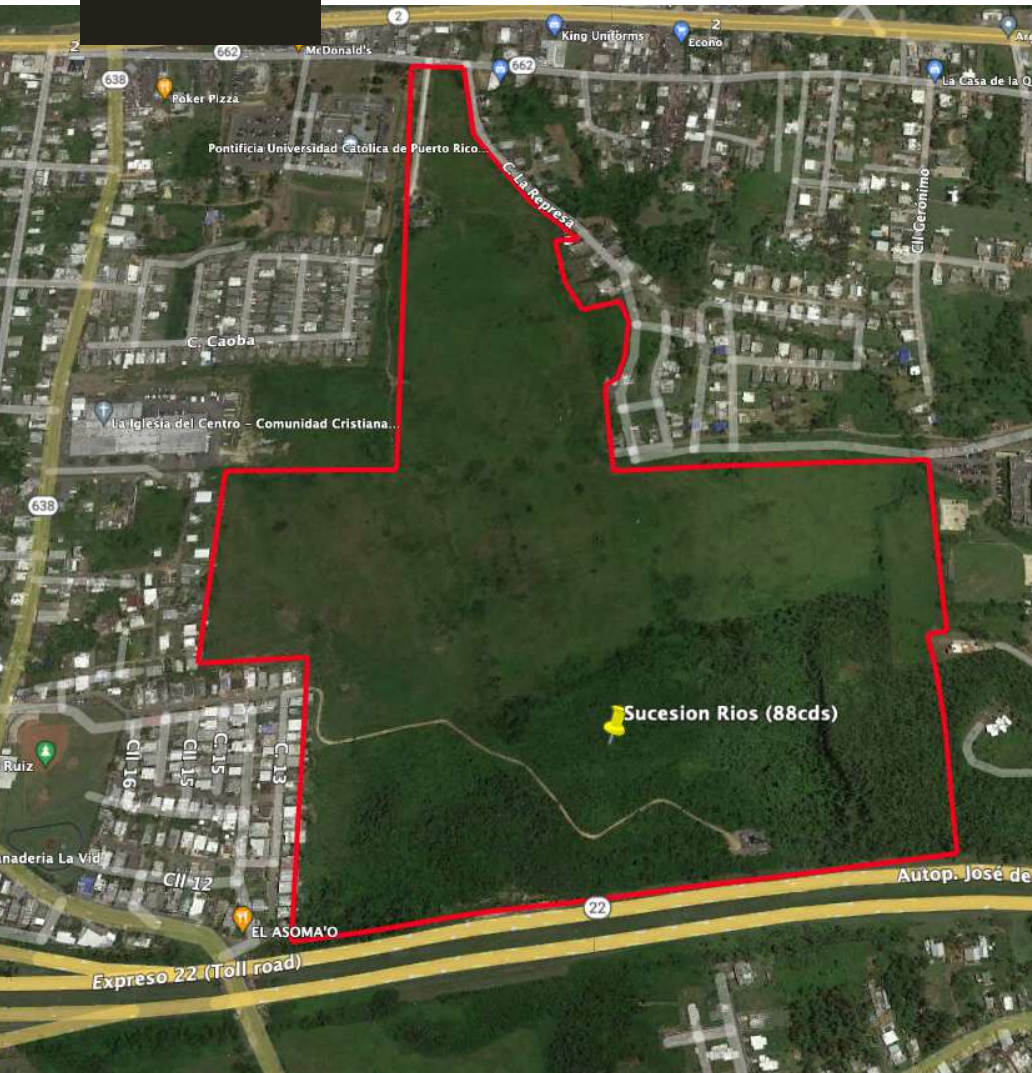


## ARECIBO 88 ACRES OF DEVELOPMENT LAND



### LOCATION DESCRIPTION

Location enjoys significant commercial activity with various residential and commercial developments in the surrounding area. Close proximity to Antonio (Nery) Juarbe Pol Airport (ARE), PR-22 Highway and Commercial Centers. Highest and best use include Housing and Renewable Energy. Some Lots having commercial potential. Arecibo is an in-demand submarket due to its central location on the island and access to major arterial highways. PR-22 & PR-10

### PROPERTY HIGHLIGHTS

- 5 adjacent/bounding parcels
- Direct access to both PR 22 Highway; and PR # 2 State Road. Both principal arteries to the Island.
- Flat Topography

### OFFERING SUMMARY

Sale Price:	Call for more information
Lot Size:	88 Acres
Zoning	R-1

EMILIO L. FAGUNDO C-17305

787.607.9860

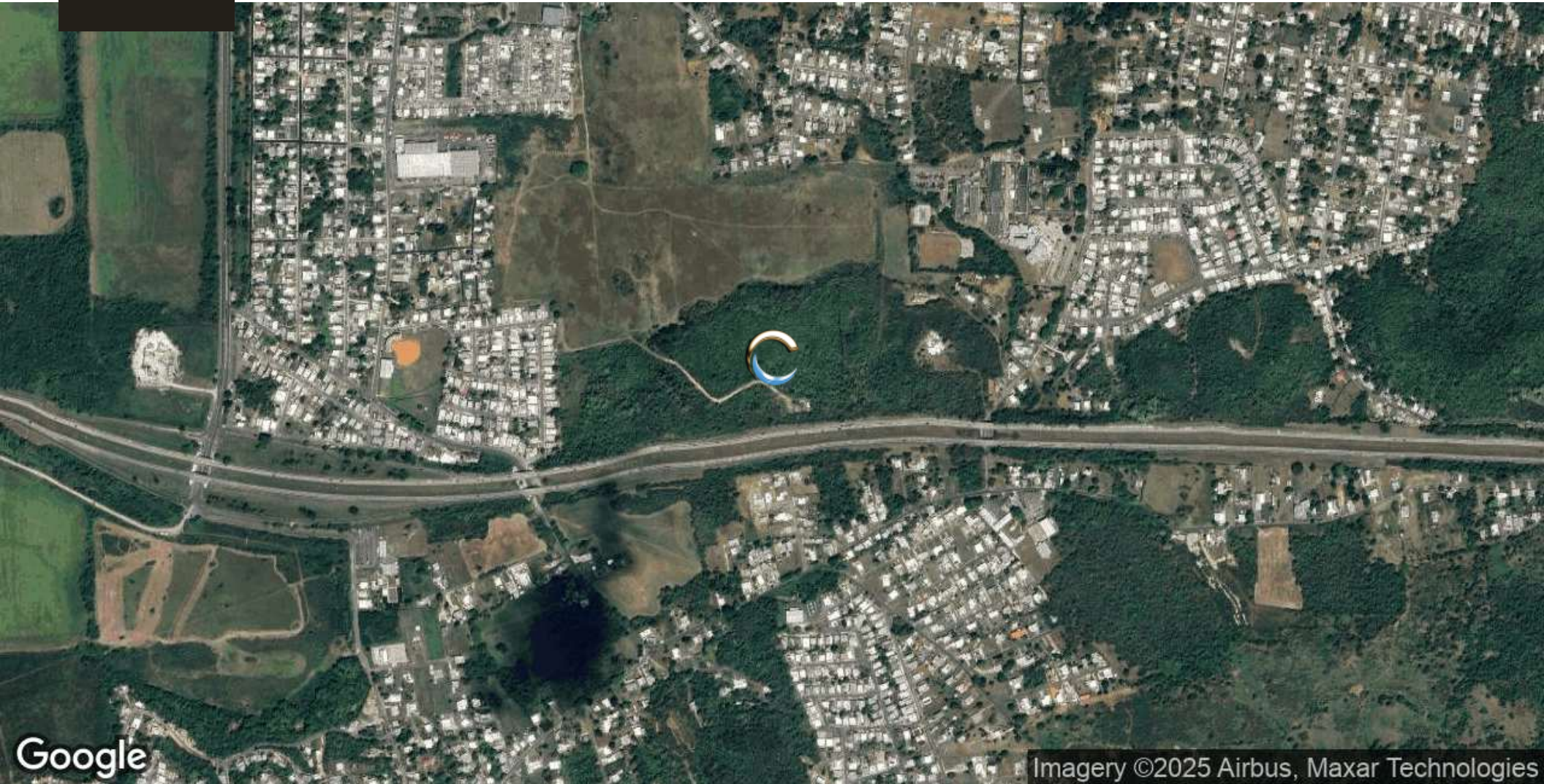
efagundo@caribbeancommercial.com





PR-638 KM 0.5, Arecibo, PR.

## ARECIBO 88 ACRES OF DEVELOPMENT LAND



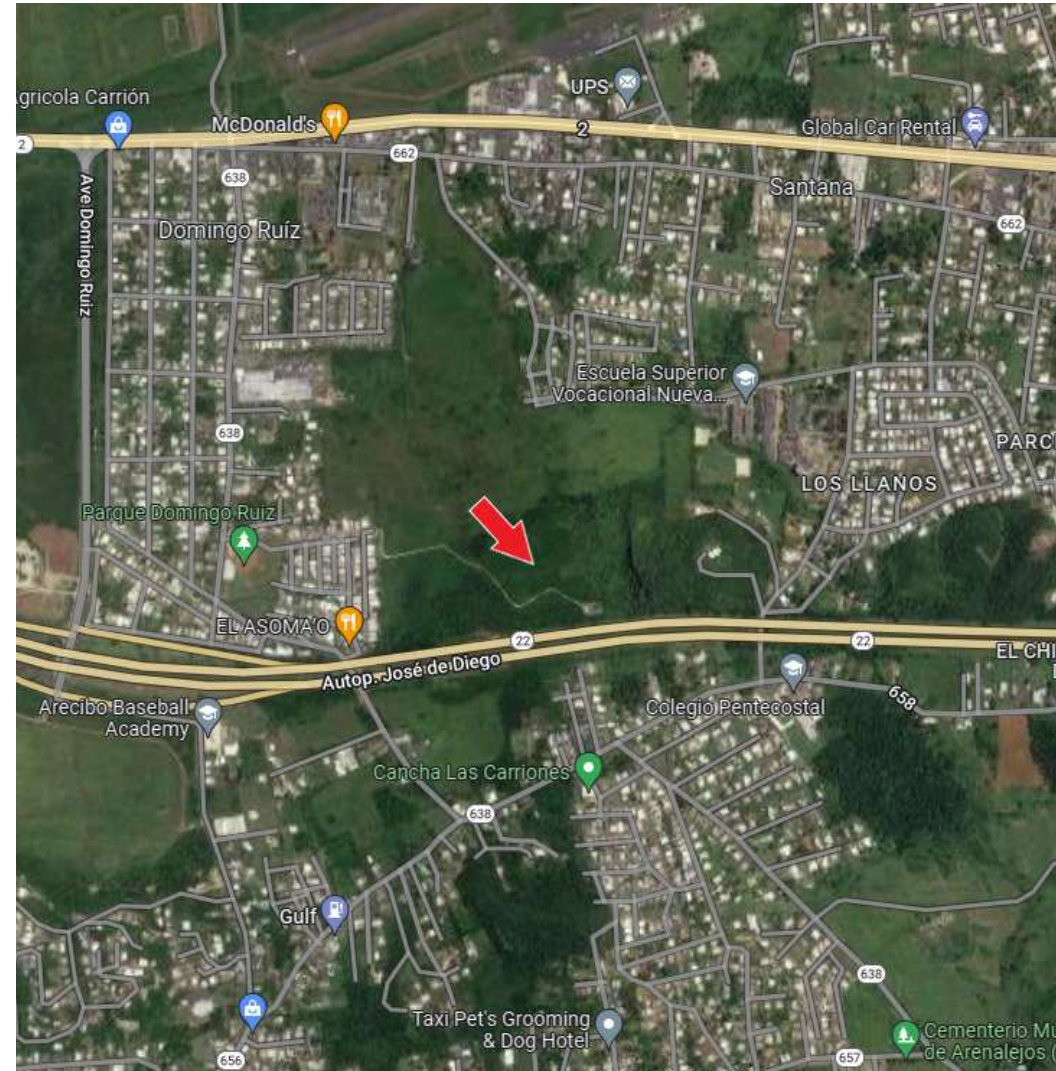
**EMILIO L. FAGUNDO C-17305**

787.607.9860

[efagundo@caribbeancommercial.com](mailto:efagundo@caribbeancommercial.com)



## ARECIBO 88 ACRES OF DEVELOPMENT LAND



**EMILIO L. FAGUNDO C-17305**

787.607.9860

[efagundo@caribbeancommercial.com](mailto:efagundo@caribbeancommercial.com)