

For Lease
±12,017 SF
HQ Office Space

1926

YOUR NAME HERE

**MOVE-IN
READY
TOP-TIER
BUILDOUT**

CenterPoint Plaza

1926 10th Avenue North | Lake Worth, FL 33461

SPECTACULAR HQ WITH SIGNAGE

Property Features

- HQ for lease, with immediate I-95 access
- Fully built-out space, ready for your team
- Professional office building with well-kept landscaping, abundant parking and professional on-site property management
- Exceptional value and high visibility building signage in central Palm Beach County
- Well-positioned near high-traffic retailers and residential neighborhoods

Key Features:



Move-in ready
full floor HQ space



Prime, central location,
adjacent to I-95



High visibility
building signage

For More Information:

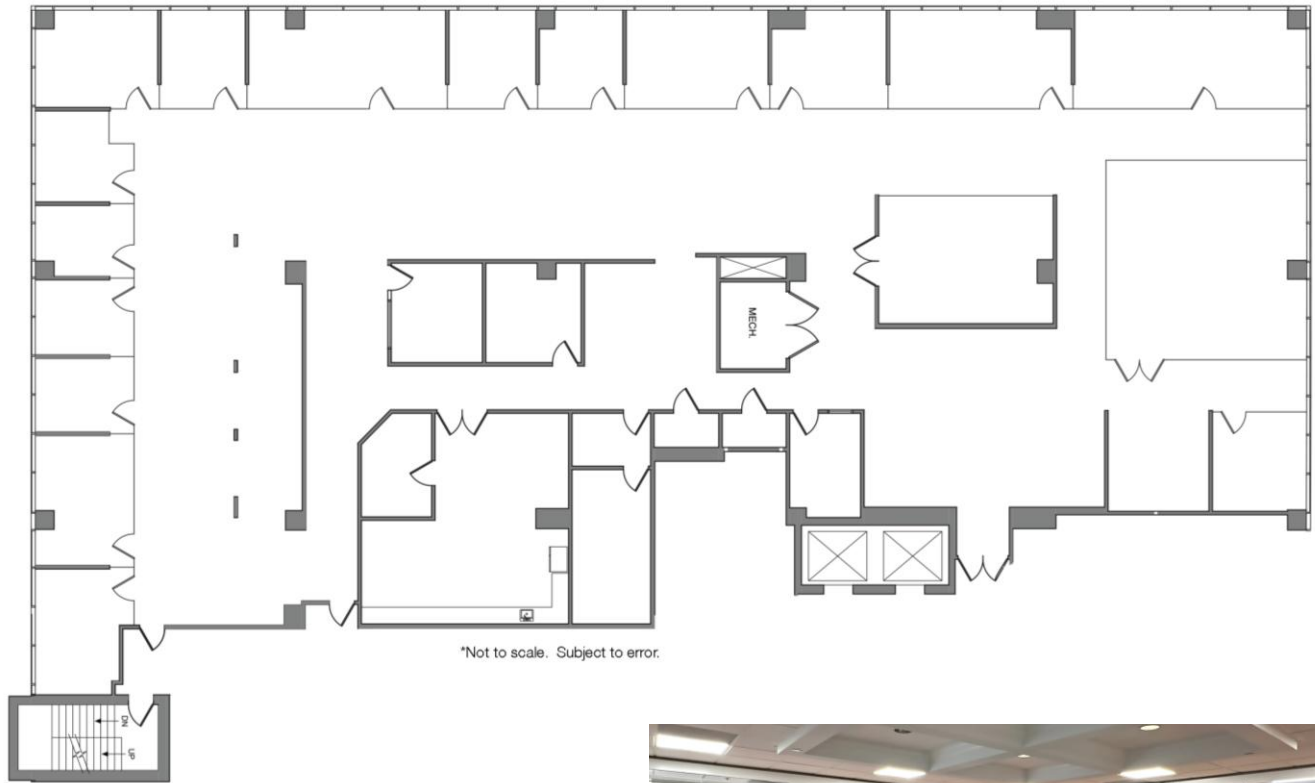
Patrick Almand, Associate
443 370 8665 | palmand@mhcreal.com

Jason Sundook, SIOR
Principal | jsundook@mhcreal.com



FOR LEASE: CENTREPOINT PLAZA

Best Corporate HQ Value | Ready When You Are



Suite 300 ±12,017 SF

Beautifully finished and sprawling office space.

- Double-door entry off elevator lobby, near restrooms
- Glass-walled conference room and perimeter offices
- Flexible, open workspace
- Large breakroom with full kitchen
- High-end finishes including wood floors and glass accents
- Building signage available for qualified tenants

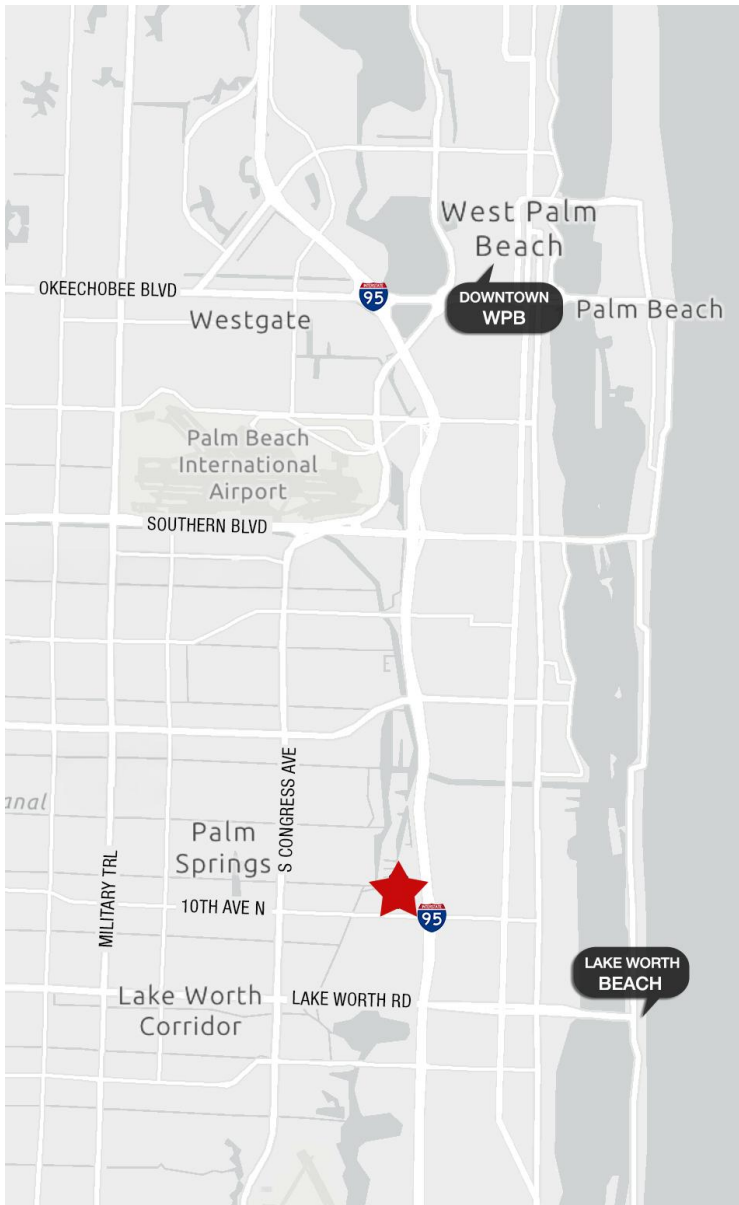


For More Information:

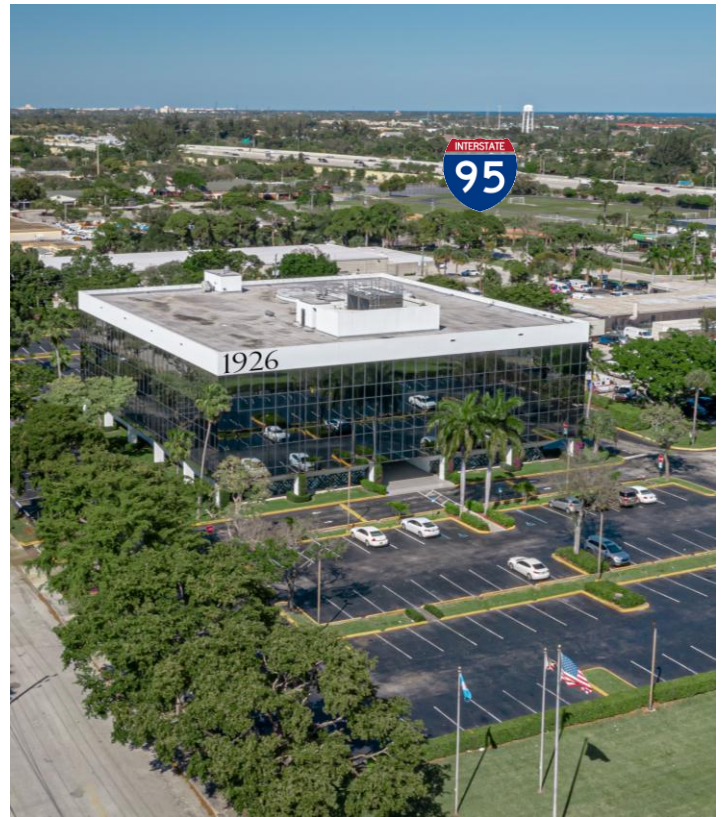
Jason Sundook, SIOR & Patrick Almand

561 471 8000 | www.mhcreal.com

FOR LEASE: CENTREPOINT PLAZA
Connected. Convenient. Right Off I-95.



**Positioned directly off I-95
with fast access to PBIA,
Downtown WPB, and major
corridors in all directions.**



ACCESS. VISIBILITY. VALUE.

Ready to position your business for better visibility, access, and value? Let's talk about how this location delivers—all without the downtown price tag.

Whether you're scaling operations, centralizing your team, or seeking a more cost-effective HQ alternative, CentrePoint Plaza puts you at the heart of Palm Beach County—without the congestion or cost of urban core locations.

CALL TODAY

 **561 471 8000**

Patrick Almand, Associate
443 370 8665 | palmand@mhcreal.com

Jason Sundook, SIOR
Principal | jsundook@mhcreal.com