

MIMS RETAIL & COMMERCIAL

BREVARD COUNTY, FL
3.52 +/- ACRES

PARCEL 1
1.95 +/- acres

PARCEL 2
1.57 +/- acres

OFFERED AT

**BRING
OFFERS**

Prime Florida Commercial & Retail High-Growth in Mims, FL

MoonBeam Land Company presents two premier commercial retail lots in the rapidly growing Mims area of Brevard County, Florida—a prime destination for low-density commercial and retail development. Positioned just 1,000 feet west of the I-95 & HWY 46 intersection, these parcels offer exceptional visibility, accessibility, and long-term investment potential.

Located directly west of the newly constructed Love's Travel Stop, this area is experiencing massive residential expansion, including:

Starlight Homes – 191+ home community breaking ground soon (adjacent property)

Sunrise Grove (55+ Active Adult Community) – Hundreds of homesites in development

New DR Horton Residential Community – Bringing an influx of new homeowners

Seasons in the Sun RV Resort & KOA Campground – Increasing visitor traffic

With rapid population growth and a booming housing market, these strategically positioned commercial lots are perfect for businesses looking to capitalize on strong demand and serve a thriving consumer base.

PRESENTED BY:

John A. Evans, Sr.
Founder/Broker

MIMS RETAIL & COMMERCIAL

**BRING
OFFERS**

LOCATION

West of Mims, FL | NW of Titusville
Directly off HWY 46, near I-95
Brevard County

SIZE

3.52 +/- acres

Parcel 1

Size: 1.95 +/- acres
Road Frontage: 315 +/- feet on SR 46
Price: Unpriced!
Bring Offers/Call Broker!

Parcel 2

Size: 1.57 +/- acres
Road Frontage: 255 +/- feet on SR 46
Price: Unpriced!
Bring Offers/Call Broker!

ZONING

- Future Land Use: CC (Community Commercial)
- Zoning: BU-1 (General Retail Commercial)
- Permitted Uses: Retail, restaurant, convenience store, office space & more (See included details)

With direct access to major highways, strong consumer demand, and high-traffic retail neighbors, these lots are a rare investment opportunity for:

- Retail stores & shopping centers
- Restaurants, cafés, & quick-service dining
- Medical offices & professional services
- Convenience stores & fuel stations
- Boutique shopping, salons, & wellness centers

INVESTING IN MIMS

Explosive Growth & Development – Mims and Titusville are seeing a residential and commercial boom, driven by new housing communities and expanding infrastructure.

Proximity to Florida's Space Coast – Located just minutes from NASA, SpaceX, and Blue Origin, this area is attracting professionals, families, and tourists, increasing demand for retail and services.

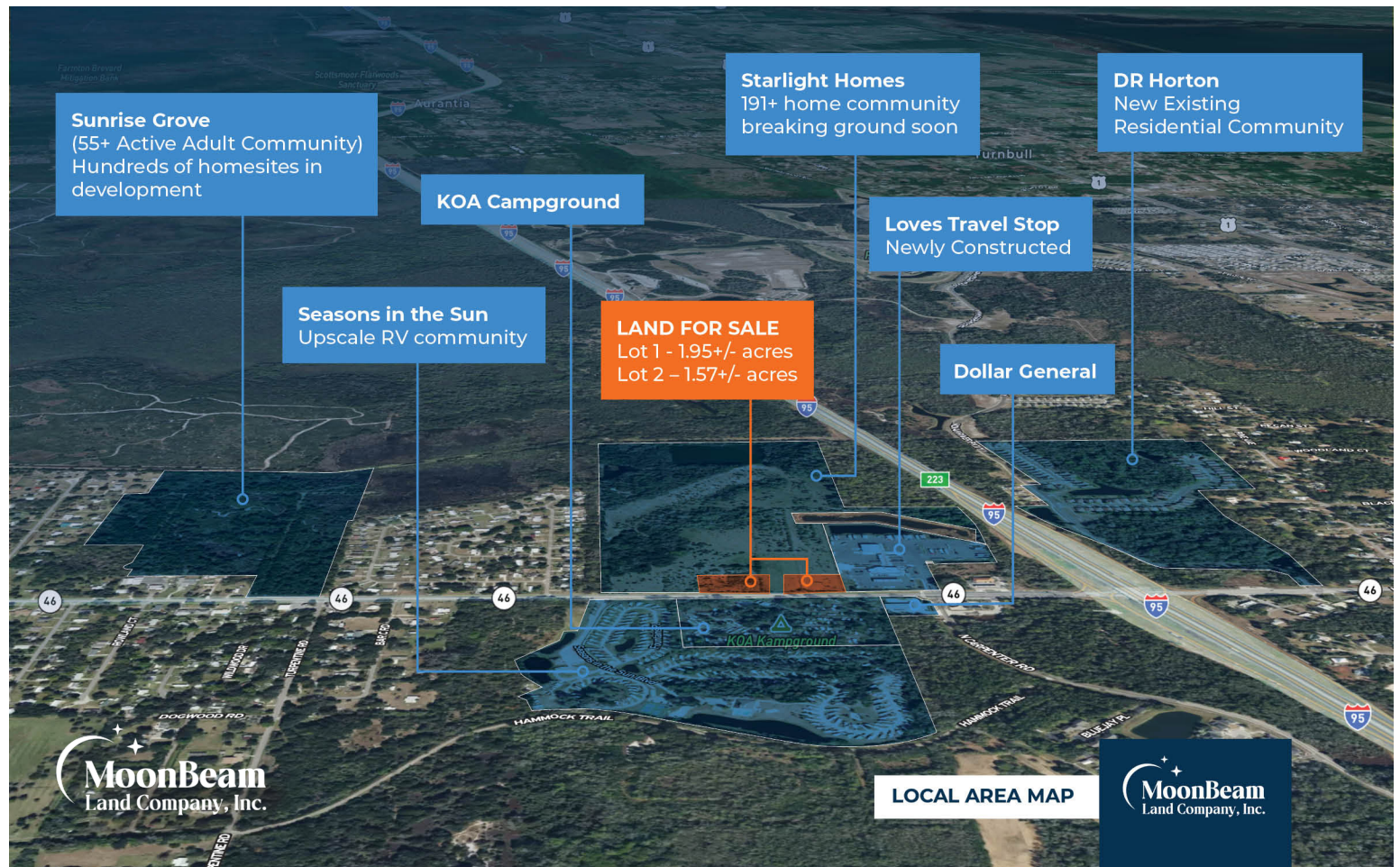
High-Traffic Location with Easy Access – Situated near I-95 and HWY 46, these lots offer prime visibility and effortless connectivity to key markets in Orlando, Daytona Beach, and beyond.

Residential Expansion Driving Demand – With hundreds of new homes under construction, this site is perfectly positioned to serve a growing consumer base seeking convenience, retail, and dining options.

LAND FOR SALE

MIMS RETAIL & COMMERCIAL

3.52+/- ACRES



LAND FOR SALE

**COUNTY LINE
INDUSTRIAL**
21.7+/- ACRES



MoonBeam Land Company is your premier brokerage for Florida Agri-Real Estate and Commercial Land sales. Backed by seven generations of Florida heritage, MoonBeam Land Company is the expert in Florida land, real estate investments, and advisory. Led by John A. Evans, Sr., Licensed Real Estate Broker, our market experience spans 17 years yielding more than \$627 million in transactional volume on more than 90,000 acres of land sales throughout the state.



John A. Evans, Sr.
Founder/Broker

moonbeamlandco.com

John@moonbeamlandco.com

407.947.3335

Sec. 62-1482. - General retail commercial, BU-1.

The BU-1 general retail commercial zoning classification encompasses land devoted to general retail shopping, offices and personal services

to serve the needs of the community. Where this zoning classification is presently located or is proposed to be located adjacent to the lagoonal

water edge or fronts on the ocean, water-dependent uses such as fish, shellfish and wildlife production, recreation, water-dependent industry

and utilities, marinas and navigation shall have the highest priority. The next highest priority for uses along the waterfront include water-related

uses such as utilities, commerce and industrial uses. Water-enhanced uses such as restaurants and tourist attractions shall have the next

highest use priorities. Of lowest priority are those uses which are nonwater-dependent and nonwater-enhanced, and those which result in an

irretrievable commitment of coastal resources.

(1) *Permitted uses.*

a. All business uses and all material and products shall be confined within substantial buildings completely enclosed with walls

and a roof; however, retail items of substantial size or which of necessity must remain outside of a building may be permitted

to be displayed outside the buildings. Such retail items include but are not limited to motor vehicles, utility sheds, nursery

items such as plants and trees, and boats.

b. The following uses, or other uses of a similar nature compatible with the character of the uses specifically described in this

subsection, are permitted, and shall be limited to retail only:

Administrative, executive and editorial offices.

Antique shops.

Aquariums.

Art goods and bric-a-brac shops.

Artists' studios.

Auditoriums.

Automobile hire.

Automobile parts, if confined within a structure.

Automobile repairs, minor (as defined in section 62-1102).

Automobile sales and storage, provided sales are from a permanent structure and the storage area meets the requirements of

article VIII of this chapter, pertaining to site plans, and article XIII, division 2, of this chapter, pertaining to landscaping.

Automobile tires and mufflers (new), sales and service.

Automobile washing.

Bait and tackle shop.

Bakery sales, with baking permitted on the premises.

Banks and financial institutions.

Barbershops and beauty parlors.

Bed and breakfast inn.

Bicycle sales and service.

Billiard rooms and electronic game arcades (soundproofed).

Bookstores.

Bowling alleys (soundproofed).

Cafeterias.

Ceramics and pottery; finishing and sales; no production or firing except accessory to on site sales only.

Civic, philanthropic or fraternal organizations.

Coin laundromats.

Colleges and universities.

Commercial schools offering instruction in dramatic, musical or other cultural activity, including martial arts.

Confectionery and ice cream stores.

Conservatories.

Contractors' offices, with no outside storage.

Convenience stores, with or without gasoline sales.

Curio shops.

Dancing halls and academies (soundproofed).

Child or adult day care centers.

Display and sales rooms.

Dog and pet hospitals and beauty parlors, with no outside kennels or runs.

Drug and sundry stores.

Dyeing and carpet cleaning.

Electrical appliance and lighting fixtures.

Employment agencies.

Fraternities and sororities.

Florist shops.

Foster homes.

Fruit stores (packing on premises).

Funeral homes and mortuaries.
Furniture stores.

Furriers.

Gift shops.

Grocery stores.

Group homes, levels I and II.

Hardware stores.

Hat cleaning and blocking.

Hobby shops.

Hospitals.

Interior decorating, costuming and draperies.

Jewelry stores.

Laboratories.

Laundries.

Lawn mower sales.

Leather good stores.

Luggage shops.

Mail order offices.

Meat, fish and seafood markets.

Medical buildings and clinics, and dental clinics.
Messenger offices.

Millinery stores.

Motorcycle sales and service.

Music, radio and television shops and repairs.

Newsstands.

Non-overnight commercial parking.

Nursing homes.

Optical stores.

Paint and wallpaper stores.

Parks and public recreational facilities.

Pawnshops.

Pet shops, with property enclosed to prevent any noxious odors.

Photograph studios and galleries.

Plant nurseries (no outside bulk storage of mulch, topsoil, etc.).

Post offices.

Printing services.

Professional offices and office buildings.

Resort dwellings.

Restaurants.

Sale of alcoholic beverage, package only.

Schools for business training.

Schools, private or parochial.

Shoe repair shops.

Shoe stores.

Single-family residence.

Soft drink stands.

Souvenir stores.

Stationery stores and bookstores.

Tailor shops.

Tearooms.

Telephone and telegraph stations and exchanges.

Television and broadcasting stations, including studios, transmitting stations and towers and other incidental uses usually

pertaining to such stations.

Theaters, but no drive-ins.

Ticket offices and waiting rooms for common carriers.

Tobacco stores.

Upholstery shops.

Wearing apparel stores.

(2)

Worship, places of.

c. Permitted uses with conditions are as follows (see division 5, subdivision II, of this article):

Assisted living facility.

Automobile and motorcycle repair (major) and paint and body work.

Boat sales and service.

Cabinetmaking and carpentry.

Dry cleaning plants, accessory to pickup stations.

Farm machinery sales and service.

Gasoline service stations.

Manufacturing, compounding, processing, packaging, storage, treatment or assembly of certain products.

Outdoor restaurant seating.

Outside sale of mobile homes.

Preexisting use.

Substations, and transmission facilities.

Security mobile home.

Self storage mini-warehouses.

Tourist efficiencies and hotels and motels.

Treatment and recovery facility.

Accessory buildings or uses. Accessory buildings and uses customary to commercial and residential uses are permitted. (Refer to definition cited

in section 62-1102 and standards cited in section 62-2100.5). Additional accessory uses are as follows:

- a. Completely enclosed lumber sales are permitted as an accessory use to hardware and supply stores.
- b. A roadside stand used as provided in chapter 86, article IV, is permitted as an accessory use.

(3) *Conditional uses.* Conditional uses are as follows:

Alcoholic beverages for on-premises consumption.

Change of nonconforming agricultural use.

Commercial entertainment and amusement enterprises (small scale and large scale).

Commercial/recreational and commercial/industrial marinas.

Land alteration (over five acres and up to ten acres).

Overnight commercial parking lot.

Performance overlay districts.

Plant nurseries (with outside bulk storage of mulch, topsoil, etc.)

Security mobile home.

Substantial expansion of a preexisting use.

Trailer and truck rental.

Wireless telecommunication facilities and broadcast towers.

(4) *Minimum lot size.* Except for gasoline service stations, an area not less than 7,500 square feet is required, having a width and depth of not less than 75 feet.

(5) *Setbacks.*

a. *Generally.*

1. Gasoline Service Station setbacks in this zoning classification shall be governed by section 62-1835.7.

2. The front setback shall be 25 feet from the front lot line.

3. The rear setback shall be 15 feet from the rear lot line. However, if the rear lot line abuts a dedicated 20-foot alley or roadway, the setback shall be five feet.

4. Side Setbacks:

a. Where a side lot line abuts a residential zone, such side setback shall be a minimum of 15 feet.

b. Where a side lot line abuts a non-residential zone, such side setback shall be 5 feet.

c. Where a side lot line abuts a combination of commercial, industrial or residential zonings, the respective side setbacks

as stated in a. or b. above shall apply to the affected side yard area.

d. Where a 20 foot dedicated alleyway or roadway exists adjacent to or abutting the rear lot line, and the zoning adjacent

to the side yard area is non-residential, no side setback is required when a three hour firewall is constructed along the

side lot line. However, where the side lot line abuts a residential zone on that side, the minimum side setback shall be 15 feet.

e. Notwithstanding the requirements of section 5(a)(4)(b) above, where a 20-foot dedicated alleyway or roadway does not

exist adjacent to or abutting the rear lot line, lots whose sides abut non-residential zonings may utilize a ten-foot paved

driveway setback along one side and a zero foot setback on the other provided a three-hour firewall is constructed

where the building is proposed within five feet of the side property line. However, where the side lot line abuts a

residential zone on that side, the minimum side setback shall be 15 feet.

f. On a corner lot, the side street setback shall be 15 feet. If a corner lot is contiguous to a key lot, then the side street

setback shall 25 feet.

5. *Within the Merritt Island Redevelopment Area.* On all lots in the Merritt Park Place Subdivision except corner lots,

structures shall be set back not less than 15 feet from the front lot line where parking is located to the side or rear of the

principal structure. Otherwise, all other provisions as described above shall apply.

b. *Breezeway/visual corridor.* All riverfront and oceanfront properties are subject to breezeway/visual corridor regulations

enumerated in section 62-2105.

(6) *Minimum floor area.* All structures shall contain a minimum of 300 square feet of floor area.

(7) *Structural height standards.*

a. Where the property abuts any other land located in the GU, AGR, AU, ARR, REU, RU-1-7, RU-1-9, RU-1-11, RU-1-13, RR-1, EU,

EU-1, EU-2, SEU, SR, RVP, TR-1-A, TR-1, TR-2, TR-3, TRC-1, RRMH-1, RRMH-2.5, RRMH-5, EA, PA or GML zoning classification, the

maximum height threshold of any structure or building thereon shall be 35 feet.

b. Where the property abuts any other land located in the RA-2-4, R-2-6, RA-2-8, RA-2-10, RU-2-4, RU-2-6, RU-2-8, RU-2-10, RU-2-

12, RP or BU-1-A zoning classification, the maximum height threshold of any structure or building thereon shall be 45 feet.

c. Where the property abuts any other land located in the RU-2-15, RU-2-30, BU-1, BU-2, PIP, PBP, IU, IU-1, TU-1 or TU-2 zoning

classification, the maximum height threshold of any structure or building thereon shall be 60 feet.

d. Where any structure or building exceeds 35 feet in height, all conditions enumerated in section 62-2101.5 as applicable shall

be fully satisfied.

e. Structures or buildings may not exceed the maximum height thresholds stated in this subsection unless otherwise permitted

by section 62-2101.5.

(8) *Fencing and buffering.* See article XIII, division 2, of this article, pertaining to landscaping.

(9) *Metal buildings.* Metal buildings shall be permitted in this zoning classification subject to the restrictions presented in section 62-

2115.

(10) *Maximum floor area ratio.* The floor area ratio shall be governed by section 62-2110.

(Code 1979, § 14-20.12(B); Ord. No. 95-17, § 1, 4-11-95; Ord. No. 95-47, §§ 52, 53, 10-19-95; Ord. No. 95-49, §§ 3, 9, 12, 18, 21, 10-19-95; Ord. No.

95-51, § 4, 10-19-95; Ord. No. 96-16, §§ 55, 56, 3-28-96; Ord. No. 96-46, § 14, 10-22-96; Ord. No. 97-23, § 2, 7-8-97; Ord. No. 97-40, § 2, 10-14-97;

Ord. No. 99-07, § 12, 1-28-99; Ord. No. 99-24, § 9, 4-8-99; Ord. No. 2000-50, § 3, 10-31-00; Ord. No. 01-07, § 2, 2-20-01; Ord. No. 01-30, § 10, 5-24-

01; Ord. No. 2002-42, § 4, 8-27-02; Ord. No. 2002-43, § 2, 8-27-02; Ord. No. 2002-49, § 33, 9-17-02; Ord. No. 2003-03, § 27, 1-14-03; Ord. No. 03-

36, § 1, 8-7-03; Ord. No. 04-29, § 26, 8-5-04; Ord. No. 2004-52, § 23, 12-4-04; Ord. No. 05-27, § 3, 5-19-05; Ord. No. 05-40, § 7, 8-23-05; Ord. No. 06-

21, § 3, 4-25-06; Ord. No. 06-36, § 3, 5-24-06; Ord. No. 2007-59, § 3, 12-6-07; Ord. No. 2014-30, § 1, 10-2-14; Ord. No. 2018-10, §§ 1, 2, 4-24-18)