

HOFFNER FULFILLMENT CENTER

6210 HOFFNER AVENUE, ORLANDO, FL 32822



CONVENIENT ACCESS
TO SR 528 AND MCO

15,970 SF AVAILABLE
FOR SUBLEASE

SPACE HIGHLIGHTS

ASKING RATE

\$14.25/SF NNN

OPEX*

\$3.06/PSF

MONTHLY RATE

\$23,612.64/MO

WAREHOUSE SF

12,332 SF

OFFICE SF

3,638 SF

CLEAR HEIGHT

32'

FIRE SUPPRESSION

ESFR

PARKING RATIO

0.88/1,000 SF

ZONING

IND-1/IND-5

LOADING DOORS

6 DOCK HIGH
1 GRADE LEVEL

YEAR BUILT

2019

LEASE EXPIRATION

MARCH 31, 2028

*Denotes Estimated Operating Expenses for 2025

CONTACT INFORMATION

TAYLOR ZAMBITO

Senior Director
+1 407 541 4409

taylor.zambito@cushwake.com

RYAN HUBBARD

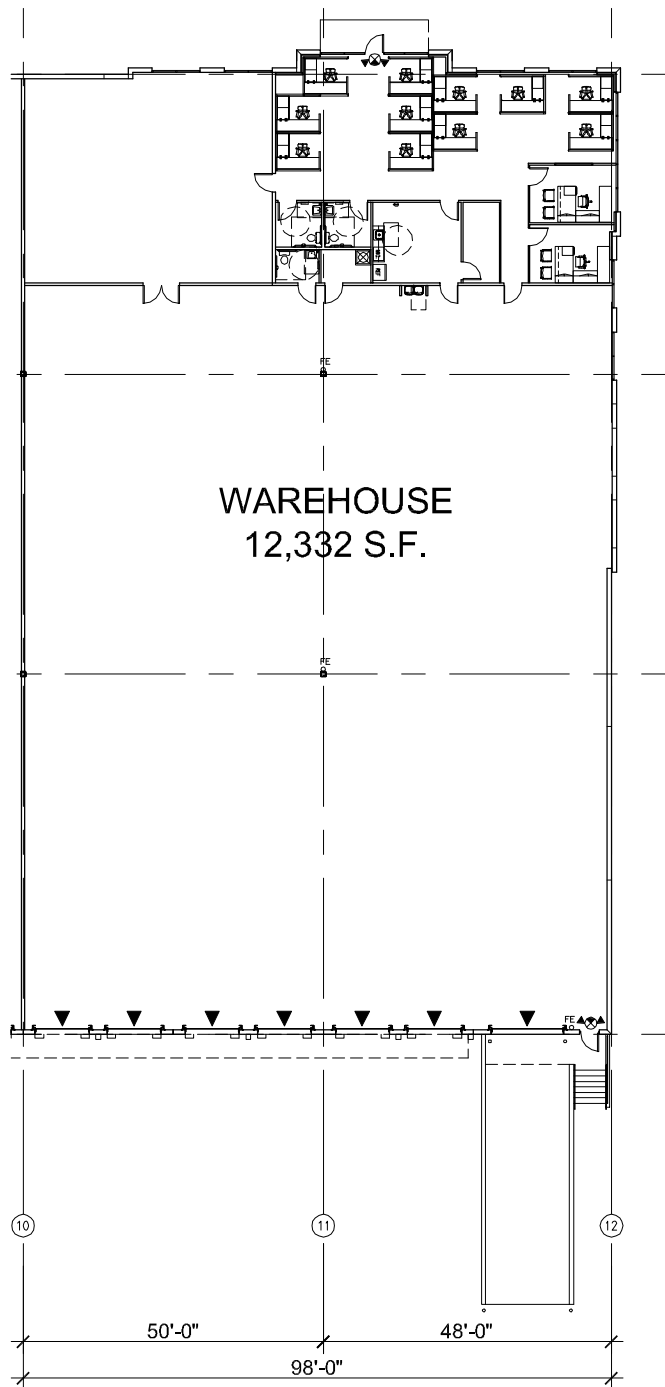
Director
+1 407 541 4390

ryan.hubbard@cushwake.com

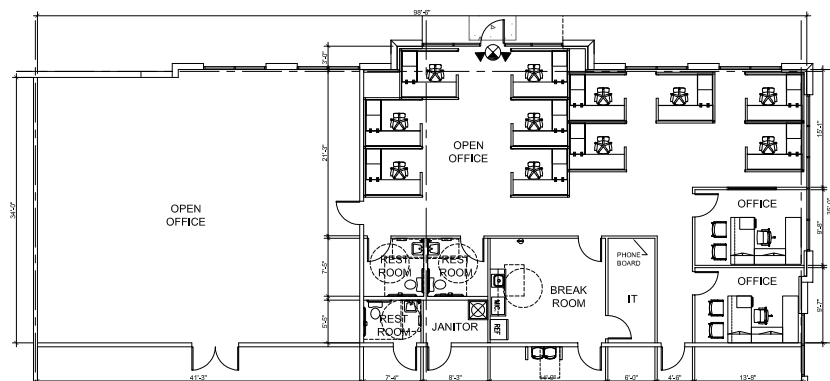


©2025 Cushman & Wakefield. All rights reserved. The information contained in this communication is strictly confidential. This information has been obtained from sources believed to be reliable but has not been verified. No warranty or representation, express or implied, is made as to the condition of the property (or properties) referenced herein or as to the accuracy or completeness of the information contained herein, and same is submitted subject to errors, omissions, change of price, rental or other conditions, withdrawal without notice, and to any specialisting conditions imposed by the property owner(s). Any projections, opinions or estimates are subject to uncertainty and do not signify current or future property performance.

6210 HOFFNER AVENUE
UNIT 160



OFFICE PLAN



TAYLOR ZAMBITO

RYAN HUBBARD

