



JOHN STANLEY
&
ASSOCIATES

COMMERCIAL REAL ESTATE



**Lot 1, Block F - Malcolm Drive
BILLINGSLEY PLACE
Montgomery, AL 36116**

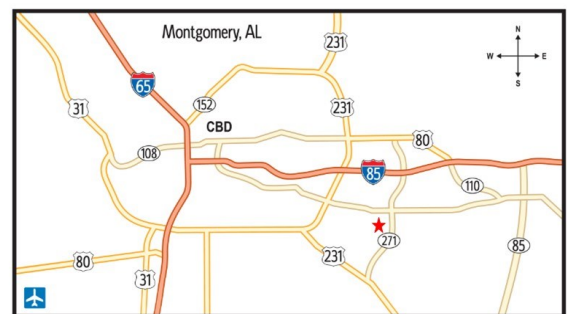
FOR SALE

- **Listed Price:** \$213,000.00 (\$6.00/S.F.)
- **Lot Size:** +/- 35,501 S.F.
- **Zoning:** B-3 (Commercial)
- **Best Use:** Business/Commercial
- **Visibility:** Excellent
- **Possession:** Immediate
- **Listing Type:** Exclusive

Commercial lot at the corner of Malcolm Drive and Averiet Drive just off Taylor Road. Excellent +/- 35,501 S.F. lot for business and commercial use. Subject to Protective Covenants and Restrictions. Contact John Stanley, CCIM, for more information at (334) 271-2475.



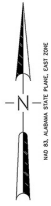
John Stanley, CCIM
John Stanley & Associates, Inc.
4747 Woodmere Boulevard
Montgomery, AL 36106
(334) 271-2475 voice
(334) 271-2421 fax
jstanley@johnstanleyassociates.com
www.johnstanleyassociates.com



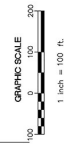
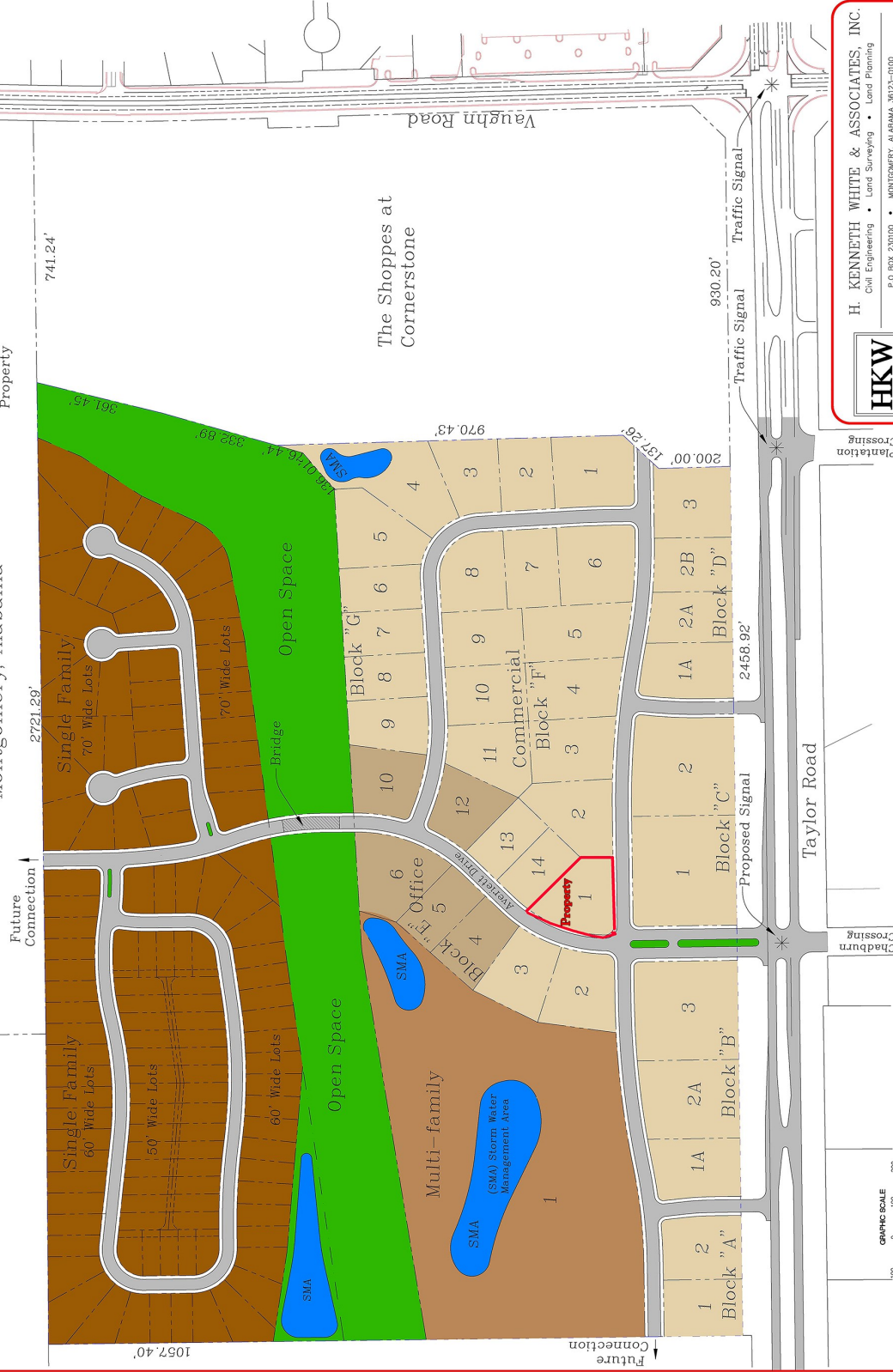
All information is from sources deemed reliable, but no warranty is made as to the accuracy thereof and same is submitted subject to errors, omissions, change of price, or other conditions, such as prior sales or withdrawal without notice by John Stanley & Associates, Inc. or the Owner.

05/22/25

Conceptual Land Use Plan Billingsley Place Montgomery, Alabama



1400 14. ALABAMA STATE PLANNING UNIT 2000



HKW

H. KENNETH WHITE & ASSOCIATES, INC.

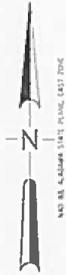
Civil Engineering • Land Surveying • Land Planning

P.O. BOX 230100 • MONTGOMERY, ALABAMA 36123-0100

4170 LOMAC STREET - SUITE B • MONTGOMERY, ALABAMA 36108

PHONE: (334) 272-5801 • FAX: (334) 272-5464 • WWW.HKWWHITE.COM

Billingsley Place Montgomery, Alabama



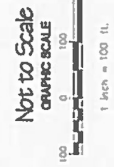
NAD 83, ALGSD83 STATE PLANE, EAST ZONE



The Reserve At
Billingsley Place
Apartments

for more information contact:

John Stanley, CCIM
John Stanley & Associates, Inc.
4747 Woodmere Blvd
Montgomery, AL 36106
(334) 271-2475 voice
(334) 271-2421 fax
jstanley@johnstanleyassociates.com
www.johnstanleyassociates.com



H. KENNETH WHITE & ASSOCIATES, INC.
Civil Engineering • Land Surveying • Asset Planning

HKW

PO BOX 22000 • MONTGOMERY, ALABAMA 36102-0000
401-271-2475 • 401-271-2421 • FAX 401-271-2441 • WWW.HKW.COM



