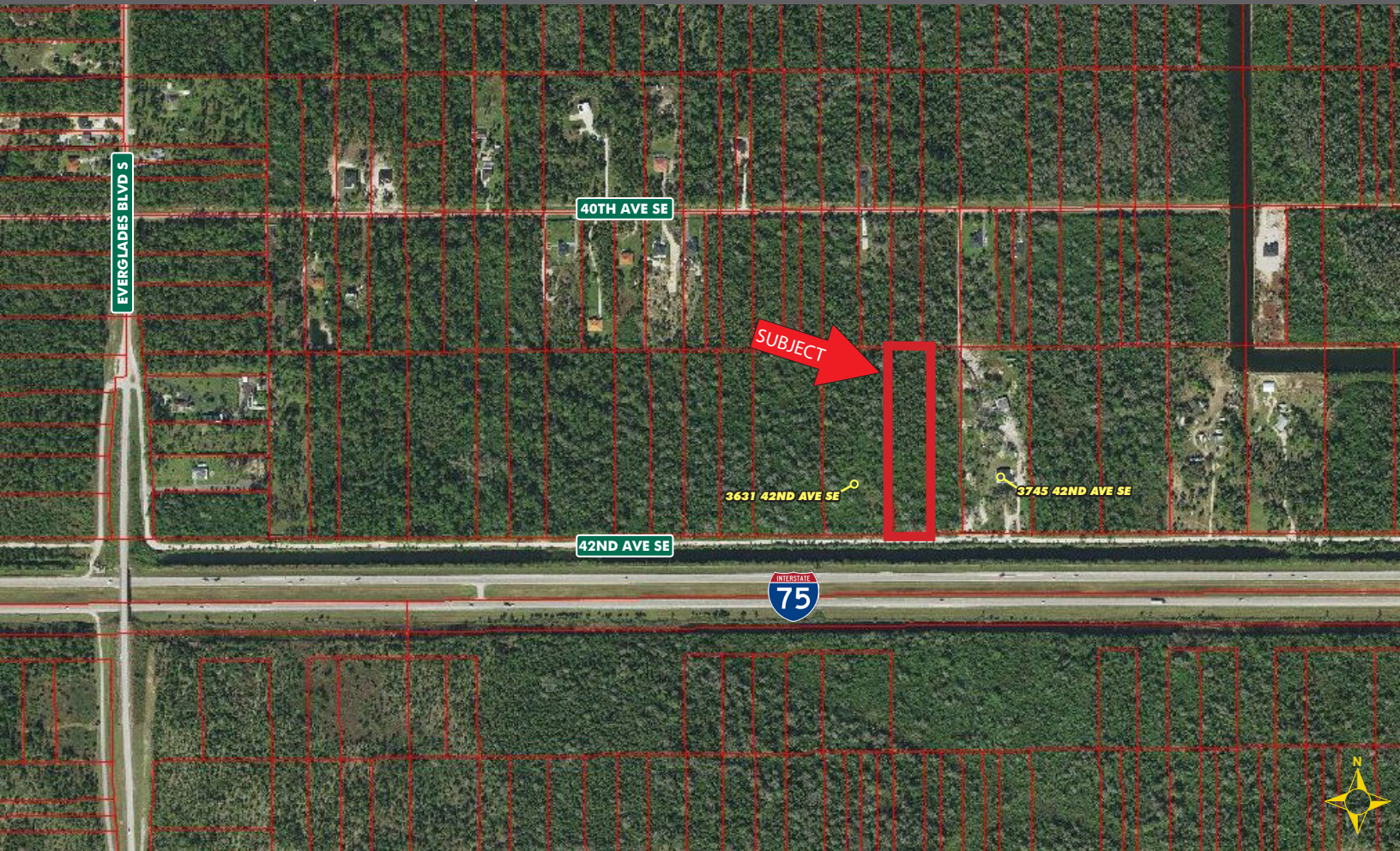


# 3.35± ACRES HOME SITE OFF EVERGLADES BLVD S

## FOR SALE

42<sup>ND</sup> AVENUE SE, NAPLES, FL 34117



- PRICE:** \$140,000 @ \$41,791/Acre or \$0.96 PSF
- SIZE:** 3.35± Acres (165' x 884')
- LOCATION:** 0.7± miles east of Everglades Boulevard S, next to 3631 42<sup>nd</sup> Avenue SE
- ZONING:** E - Estates District (Collier County)
- FLOOD ZONE:** AH [Click here for description](#)
- RE TAXES:** \$551.32 (2024)
- PARCEL ID:** 4166080106

Great secluded home site located just 0.7± miles east of Everglades Boulevard S. Zoned "E" Estate District, suitable for single-family home and guest house not exceeding 40% of the primary residence. This is a great property whether you are looking to build or hold for a few years as an investment.

**CONTACT**  
**FRED KERMANI, CCIM, AIA**  
**Partner**  
239.659.4960  
[Fred.Kermani@CREConsultants.com](mailto:Fred.Kermani@CREConsultants.com)  
[CREConsultants.com/FredKermani](https://CREConsultants.com/FredKermani)

12140 Carissa Commerce Ct, Suite 102  
Fort Myers, FL 33966  
1100 Fifth Ave. S, Suite 404  
Naples, FL 34102

The information contained herein was obtained from sources believed reliable. CRE Consultants makes no guarantees, warranties or representations as to the completeness or accuracy thereof, and is subject to errors, omissions, change of price or conditions prior to sale or lease, or withdrawal without notice.



# 3.35± ACRES

## HOME SITE OFF EVERGLADES BLVD S

### FOR SALE

42<sup>ND</sup> AVENUE SE, NAPLES, FL 34117

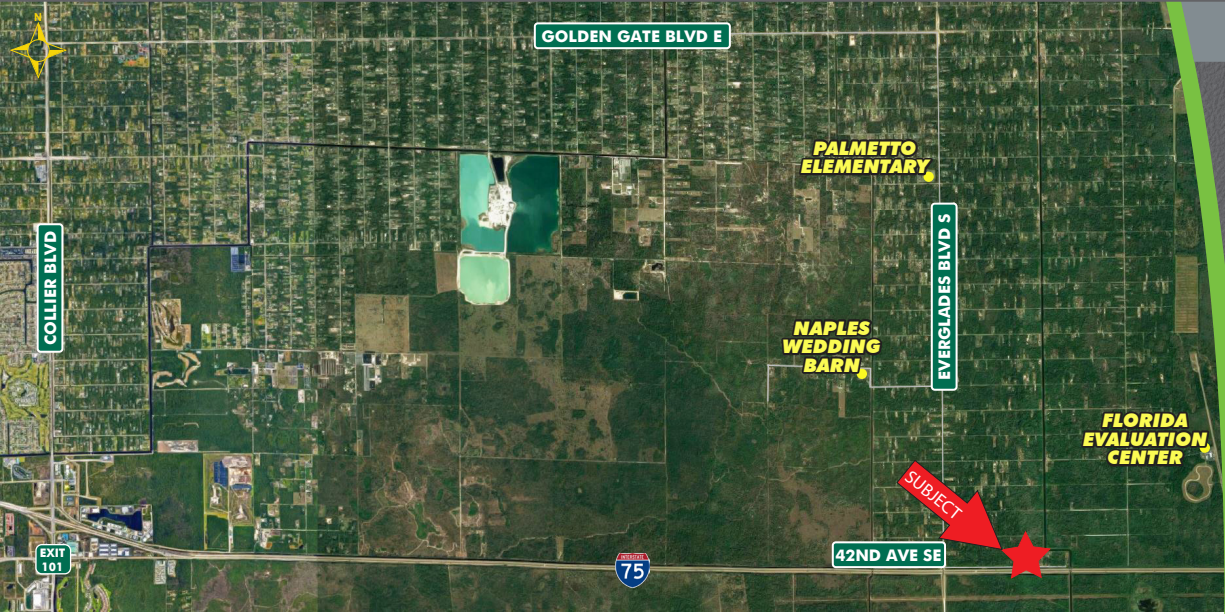


# CRE

CONSULTANTS

Commercial Real Estate Consultants, LLC

[CRECONSULTANTS.COM](http://CRECONSULTANTS.COM)



### HIGHLIGHTS

- Zoned E - Estate District
- Located 6± miles south of Golden Gate Boulevard E
- Located 15± miles from Collier Boulevard



### CONTACT

**FRED KERMANI, CCIM, AIA**  
**Partner**  
239.659.4960  
[Fred.Kermani@CREConsultants.com](mailto:Fred.Kermani@CREConsultants.com)  
[CREConsultants.com/FredKermani](http://CREConsultants.com/FredKermani)

2025 DEMOGRAPHICS	3 MILES	5 MILES	10 MILES
EST. POPULATION	2,208	6,152	45,186
EST. HOUSEHOLDS	647	1,910	15,254
EST. MEDIAN HOUSEHOLD INCOME	\$83,436	\$84,405	\$81,540

The information contained herein was obtained from sources believed reliable. CRE Consultants makes no guarantees, warranties or representations as to the completeness or accuracy thereof, and is subject to errors, omissions, change of price or conditions prior to sale or lease, or withdrawal without notice.

05/22/25



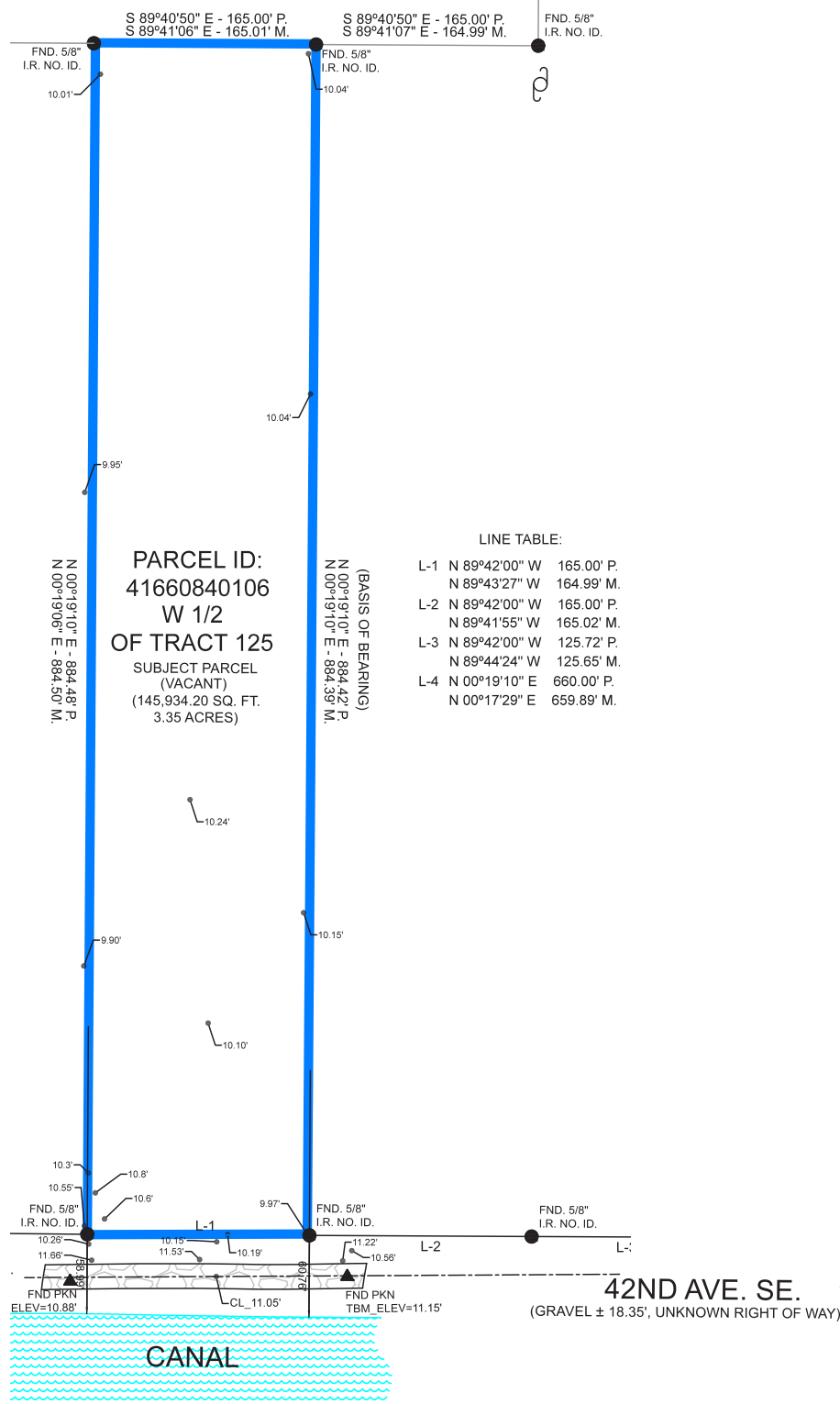
# 3.35± ACRES

## HOME SITE OFF EVERGLADES BLVD S

### FOR SALE

42<sup>ND</sup> AVENUE SE, NAPLES, FL 34117

SURVEY



**CONTACT**  
**FRED KERMANI, CCIM, AIA**  
**Partner**  
239.659.4960  
Fred.Kermani@CREConsultants.com