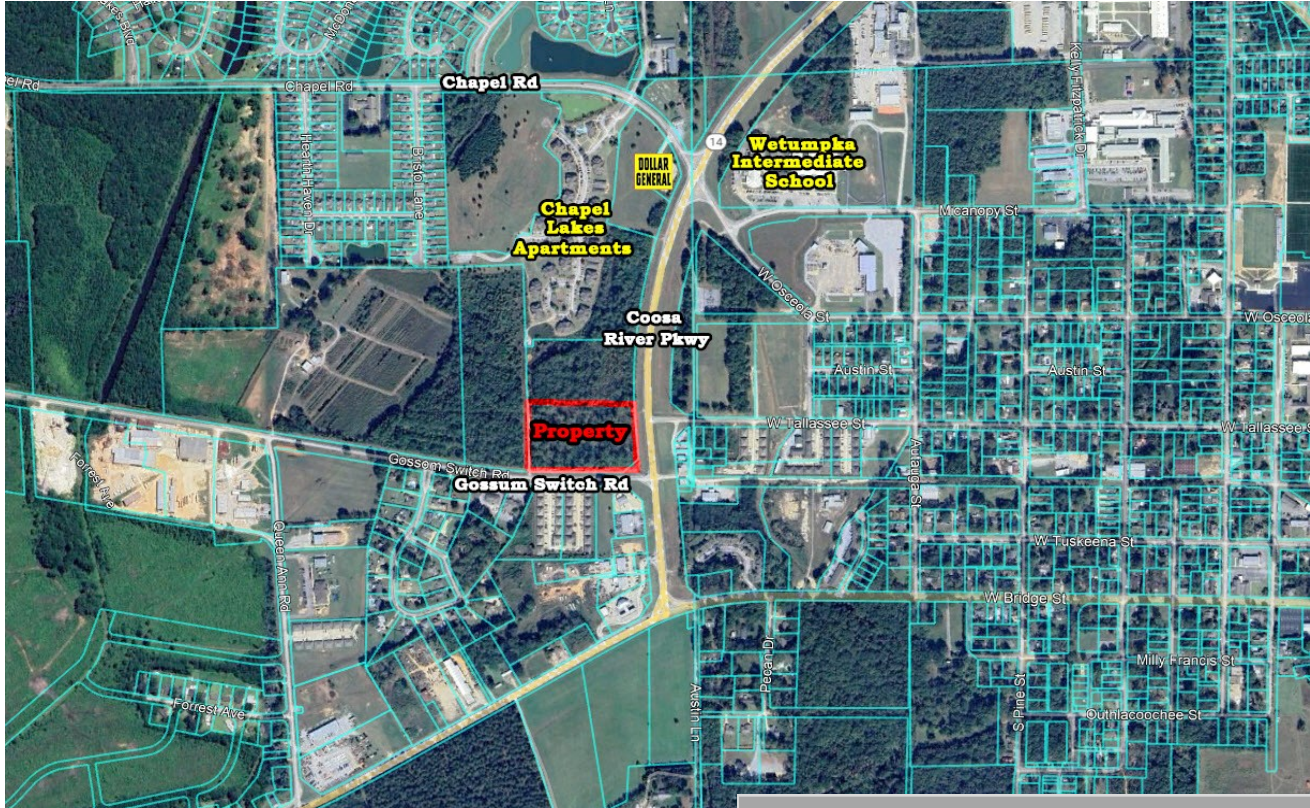




JOHN STANLEY
&
ASSOCIATES

COMMERCIAL REAL ESTATE



**Chapel Lakes Commercial Property
Coosa River Parkway & Gossum Switch Road
Wetumpka, Alabama 36092**

FOR SALE

Listed Price: \$975,000.00 (Entire Parcel)
Land Size: ± 15.0 Acres
Current Use: Undeveloped
Zoning: B-2 (Commercial)
Best Use: Retail, Office, Commercial
or Multi-Family
Accessibility: Excellent

Great opportunity for commercial development at corner of Coosa River Parkway and Gossum Switch Road in Wetumpka, Alabama. Priced as an entire parcel. Seller will divide and price accordingly. Adjacent to Chapel Lakes Apartments (152 units). Contact John Stanley, CCIM, for more information at (334) 271-2475.



John C. Stanley, CCIM
John Stanley & Associates, Inc.
4747 Woodmere Blvd., Montgomery, AL 36106
Tel: (334) 271-2475; Fax: (334) 271-2421
jstanley@johnstanleyassociates.com
www.johnstanleyassociates.com



All information is from sources deemed reliable, but no warranty is made as to the accuracy thereof and same is submitted subject to errors omissions, change of price, or other conditions, such as prior sales or withdrawal without notice by John Stanley & Associates, Inc. or the Owner.





