

# PRIME PARK AVENUE OFFICES FOR LEASE

152 S. Park Ave | Winter Park, FL



## HIGHLIGHTS

- Prime office spaces on the second floor.
- Offering a professional and functional work environment.
- Now leasing: 6 individual offices with shared access to a conference room, two restrooms, and a break area.
- Lease one office or as many as you need to suit your space requirements.
- Unbeatable location at the corner of Park Avenue and Welbourne Ave in the heart of Downtown Winter Park.
- Scenic views overlooking the lush greenery of Central Park and steps from the Sunrail Station.
- Surrounded by renowned restaurants and boutique shopping.
- Abundant natural light.
- Parking: Convenient parking options include five spaces adjacent to the building, ample street parking on both sides of Park Avenue and nearby streets, as well as several public lots located less than one block away.

Demographics	1 Mile	3 Miles	5 Miles
Population	8,524	100,352	281,138
Average HH Income	\$145,575	\$133,250	\$105,549
Daytime Employees	20,495	121,689	382,420



MONTE MITCHELL | [Monte@FornessProperties.com](mailto:Monte@FornessProperties.com) | 407.988.0073  
DREW FORNESS, CCIM | [Drew@FornessProperties.com](mailto:Drew@FornessProperties.com) | 407.960.4740  
[www.FornessProperties.com](http://www.FornessProperties.com) | Licensed Real Estate Broker



# PRIME PARK AVENUE OFFICES FOR LEASE

152 S. Park Ave | Winter Park, FL





# PRIME PARK AVENUE OFFICES FOR LEASE

152 S. Park Ave | Winter Park, FL





# PRIME PARK AVENUE OFFICES FOR LEASE

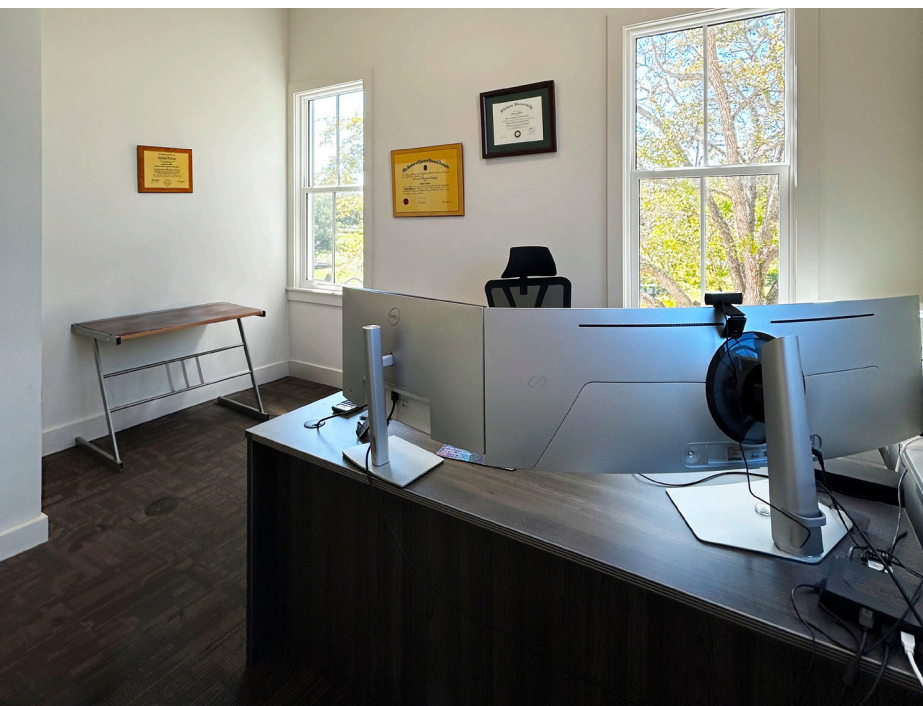
152 S. Park Ave | Winter Park, FL





# PRIME PARK AVENUE OFFICES FOR LEASE

152 S. Park Ave | Winter Park, FL





# PRIME PARK AVENUE OFFICES FOR LEASE

152 S. Park Ave | Winter Park, FL

