

FOR LEASE | **11,250 SF WAREHOUSE**

88 BROAD STREET

WINTER GARDEN, FL 34787



- * Fully Climate Controlled Office & Warehouse
- * Sound System in Office & Warehouse
- * Security System Interface & Wiring Present

PROPERTY HIGHLIGHTS

- **Building Size:** 11,250 SF
 - Office: 2,775 SF
 - Warehouse: 8,475 SF
- **Excess Parking:** 10,300 SF of Fenced & Gated Area
- **Clear Height:** 14' - 16'6"
- **Doors:** Five (5) Grade Level Doors (12'x12')
 - 3 Automatic roll up doors
- **Construction:** Tilt Wall
- **Zoning:** C-2 (Winter Garden)

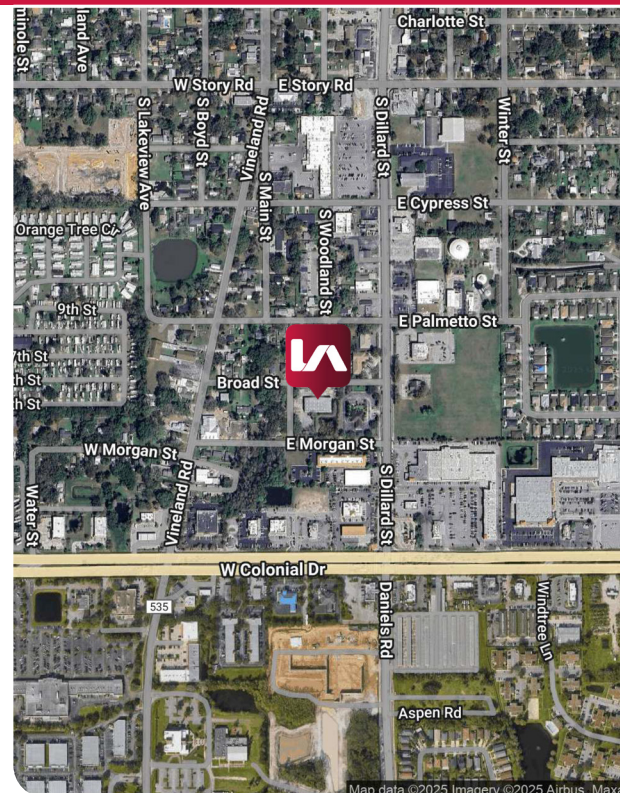
[Click Here For Permitted Uses](#)

Lease Rate: \$22.00/SF NNN

Leasing Contact:

Brock Holston
Associate
bholston@lee-associates.com
D 407.413.0252

Jason Bantel, CCIM
Senior Vice President
jbantel@lee-associates.com
D 321.281.8509



All information furnished regarding property for sale, rental or financing is from sources deemed reliable, but no warranty or representation is made to the accuracy thereof and same is submitted to errors, omissions, change of price, rental or other conditions prior to sale, lease or financing or withdrawal without notice. No liability of any kind is to be imposed on the broker herein.

11,250 SF WAREHOUSE WITH FENCED AND GATED PARKING AREA

88 BROAD STREET
WINTER GARDEN, FL 34787



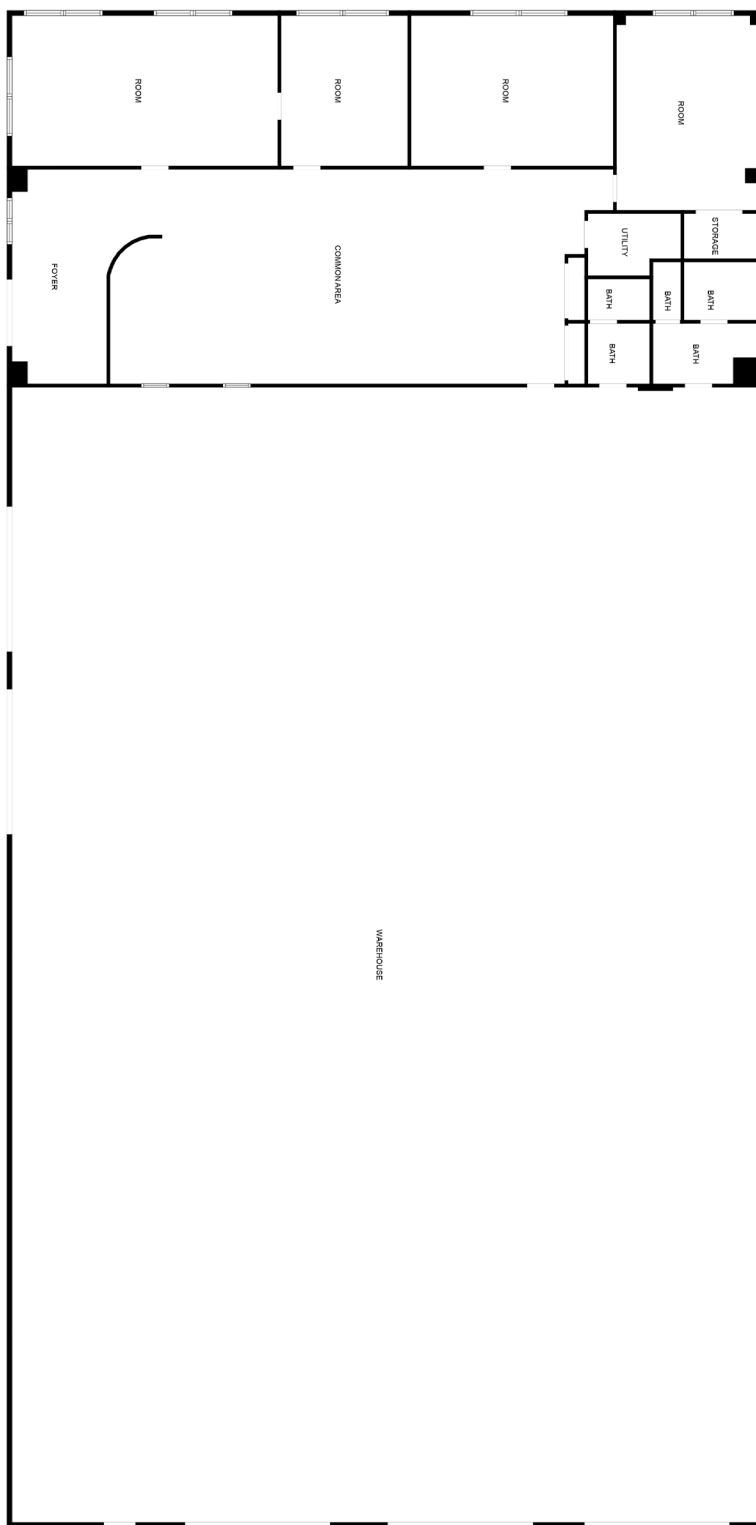
11,250 SF WAREHOUSE WITH FENCED AND GATED PARKING AREA

88 BROAD STREET
WINTER GARDEN, FL 34787



11,250 SF WAREHOUSE WITH FENCED AND GATED PARKING AREA

88 BROAD STREET
WINTER GARDEN, FL 34787



Leasing Contact:

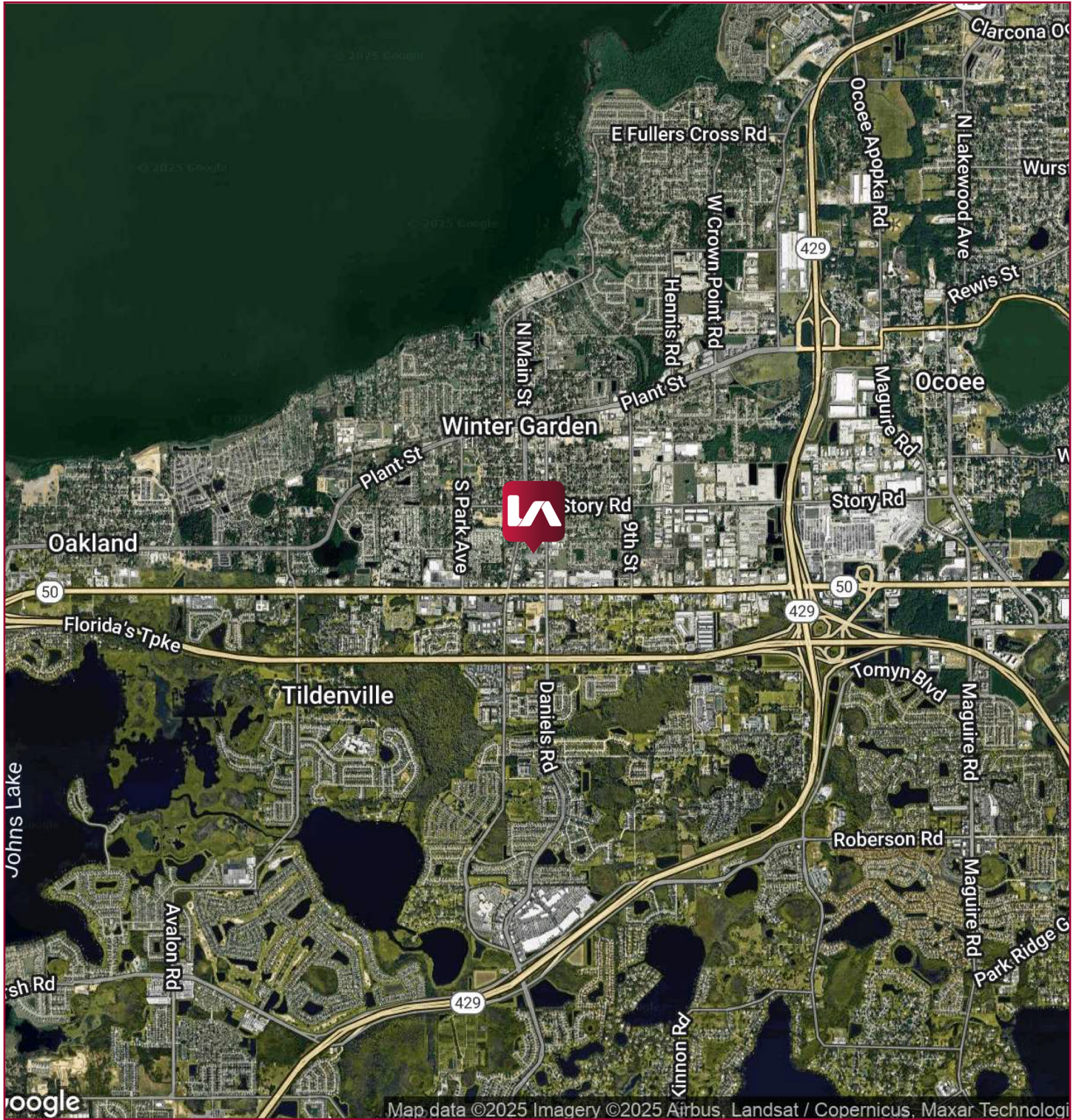
Brock Holston
Associate
bholston@lee-associates.com
D 407.413.0252

Jason Bantel, CCIM
Senior Vice President
jbantel@lee-associates.com
D 321.281.8509

11,250 SF WAREHOUSE WITH FENCED AND GATED PARKING AREA

88 BROAD STREET
WINTER GARDEN, FL 34787

LEE & ASSOCIATES
COMMERCIAL REAL ESTATE SERVICES



Leasing Contact:

Brock Holston
Associate
bholston@lee-associates.com
D 407.413.0252

Jason Bantel, CCIM
Senior Vice President
jbantel@lee-associates.com
D 321.281.8509