

# COLLIER PARK OF COMMERCE

## INDUSTRIAL FLEX SPACE

### FOR LEASE

2940-2960 HORSESHOE DRIVE S, NAPLES, FL 34104



**LEASE RATE:** \$20.00 PSF NNN

**AVAILABILITY:**

BUILDING	UNIT	SIZE (SF)	LEASE RATE (PSF)	MONTHLY BASE RENT	CAM (PSF)	MONTHLY CAM	MONTHLY SALES TAX	MONTHLY TOTAL	AVAILABLE
2960	900	1,500	\$20.00	\$2,500.00	\$6.25	\$781.25	\$65.63	\$3,346.88	5/1/2025

**LOCATION:** Located just north of Radio Road, adjacent to the Naples Municipal Airport

**YEAR BUILT:** 1983

**ZONING:** BP - Business Park District (Collier County)

**C**ollier Park of Commerce is located adjacent to the Naples Airport. This property provides tenants with a central location, excellent accessibility and good visibility, with many amenities in the immediate area.

The Business Park is owned and managed by the Adler Group, which owns and manages an extensive real estate portfolio of properties in the Southeast United States. Adler Group professionals possess a deep understanding of the CRE industry and are extremely responsive to their tenants' needs.

### ON-SITE PROPERTY MANAGEMENT

**CONTACT**  
**DAVE WALLACE, CCIM, SIOR**  
**Senior Vice President**  
239.659.1447 x218  
[dave.wallace@creconsultants.com](mailto:dave.wallace@creconsultants.com)

**DAVID WALLACE**  
**Senior Associate**  
239.659.1447 x223  
[david.wallace@creconsultants.com](mailto:david.wallace@creconsultants.com)

12140 Carissa Commerce Ct, Suite 102  
Fort Myers, FL 33966  
1100 Fifth Ave. S, Suite 404  
Naples, FL 34102

The information contained herein was obtained from sources believed reliable. CRE Consultants makes no guarantees, warranties or representations as to the completeness or accuracy thereof, and is subject to errors, omissions, change of price or conditions prior to sale or lease, or withdrawal without notice.  
04/21/25

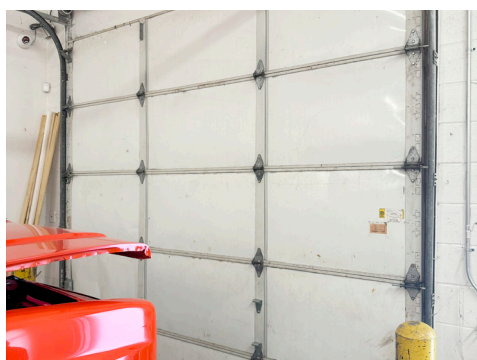
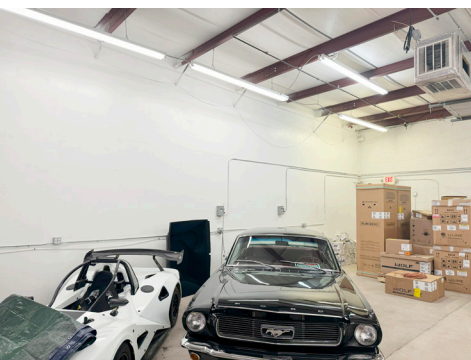
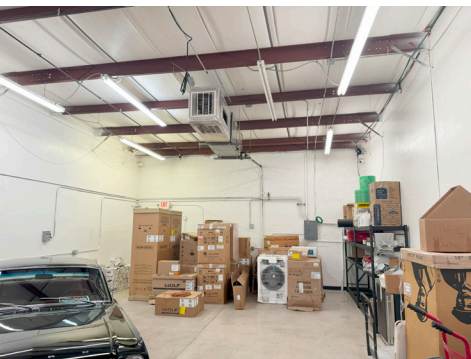


# COLLIER PARK OF COMMERCE

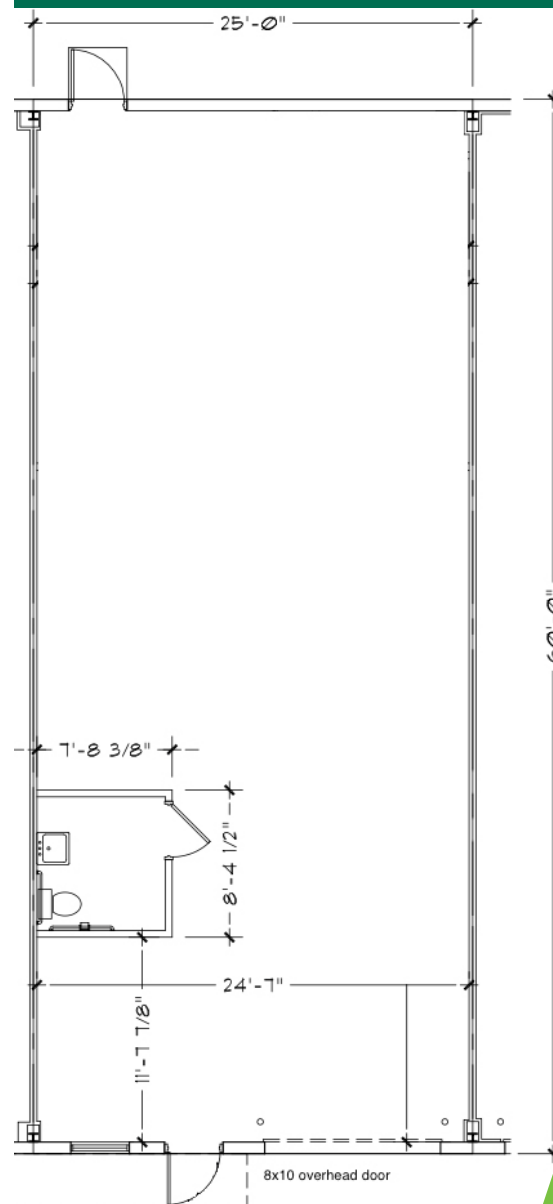
## INDUSTRIAL FLEX SPACE

### FOR LEASE

2940-2960 HORSESHOE DRIVE S, NAPLES, FL 34104



### FLOOR PLAN



### HIGHLIGHTS

- Air-conditioned
- 15' Clear Height
- Open warehouse
- 8' x 12' Overhead door
- Restroom in unit
- Entry door in front and rear of unit
- Professionally managed
- On-site maintenance employee
- Secure and clean building

### CONTACT

**DAVE WALLACE, CCIM, SIOR**  
Senior Vice President  
239.659.1447 x218  
[dave.wallace@creconsultants.com](mailto:dave.wallace@creconsultants.com)

**DAVID WALLACE**  
Senior Associate  
239.659.1447 x223  
[david.wallace@creconsultants.com](mailto:david.wallace@creconsultants.com)

The information contained herein was obtained from sources believed reliable. CRE Consultants makes no guarantees, warranties or representations as to the completeness or accuracy thereof, and is subject to errors, omissions, change of price or conditions prior to sale or lease, or withdrawal without notice.

04/21/25



# COLLIER PARK OF COMMERCE

## INDUSTRIAL FLEX SPACE

### FOR LEASE

2940-2960 HORSESHOE DRIVE S, NAPLES, FL 34104



**CONTACT**

**DAVE WALLACE, CCIM, SIOR**  
Senior Vice President  
239.659.1447 x218  
[dave.wallace@creconsultants.com](mailto:dave.wallace@creconsultants.com)

**DAVID WALLACE**  
Senior Associate  
239.659.1447 x223  
[david.wallace@creconsultants.com](mailto:david.wallace@creconsultants.com)

The information contained herein was obtained from sources believed reliable. CRE Consultants makes no guarantees, warranties or representations as to the completeness or accuracy thereof, and is subject to errors, omissions, change of price or conditions prior to sale or lease, or withdrawal without notice.

04/21/25