



RENNOVATED MEDICAL SPACE ON DOCTOR'S ROW

3939 Houma Boulevard Building 6 Suite 226, Metairie, LA 70006

MATT EATON, CCIM • PARTNER
OFFICE: 504.414.0703
MOBILE: 504.339.2136
matt@matteatonccim.com

MARTIN O. MILLER III, CCIM, SIOR • PARTNER
OFFICE: 504.414.0703
MOBILE: 504.616.5700
momiller@ccim.net



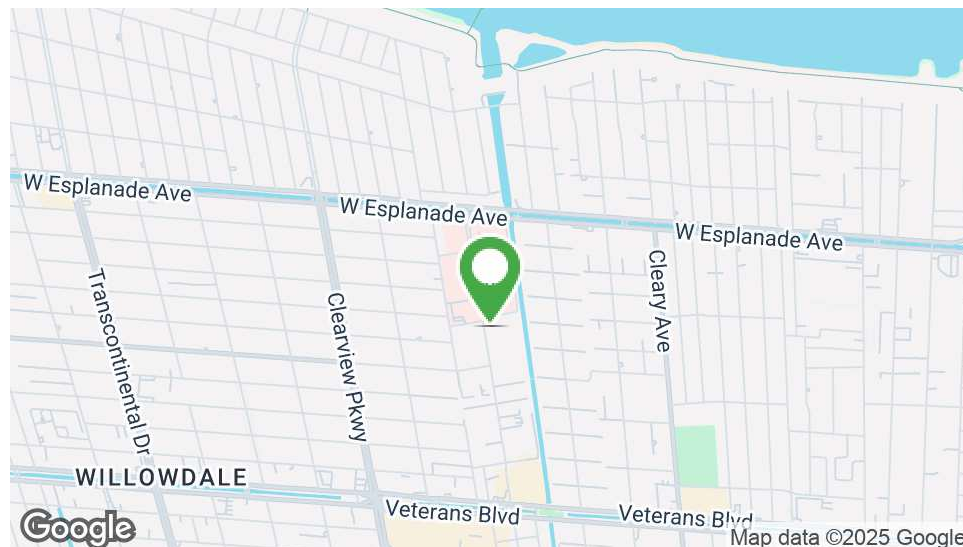
PROPERTY DESCRIPTION

Located in the highly sought-after Doctors Row in Metairie, this recently renovated 1,200 SF medical office is available for sale or lease.

Designed for modern healthcare needs, this turnkey space offers elevator access, top-tier upgrades, and security features like an alarm system and electric keypads.

The property features, reception area, 4-6 Medical Offices, a break room, 2 restrooms, and 2 private offices.

Take advantage of a beautiful and modern space in an idea location.



OFFERING SUMMARY

Sale Price:	\$299,000
Lease Price:	\$25/SF
Size:	1,200 SF

DEMOGRAPHICS	1 MILE	3 MILES	5 MILES
Total Households	7,546	49,995	101,167
Total Population	18,323	114,636	232,703
Average HH Income	\$99,776	\$100,137	\$98,249

OFFICE BUILDING FOR SALE

PROPERTY SUMMARY





RENNOVATED MEDICAL SPACE ON DOCTOR'S ROW

3939 Houma Boulevard Building 6 Suite 226, Metairie, LA 70006

MATT EATON, CCIM • PARTNER

OFFICE: 504.414.0703

MOBILE: 504.339.2136

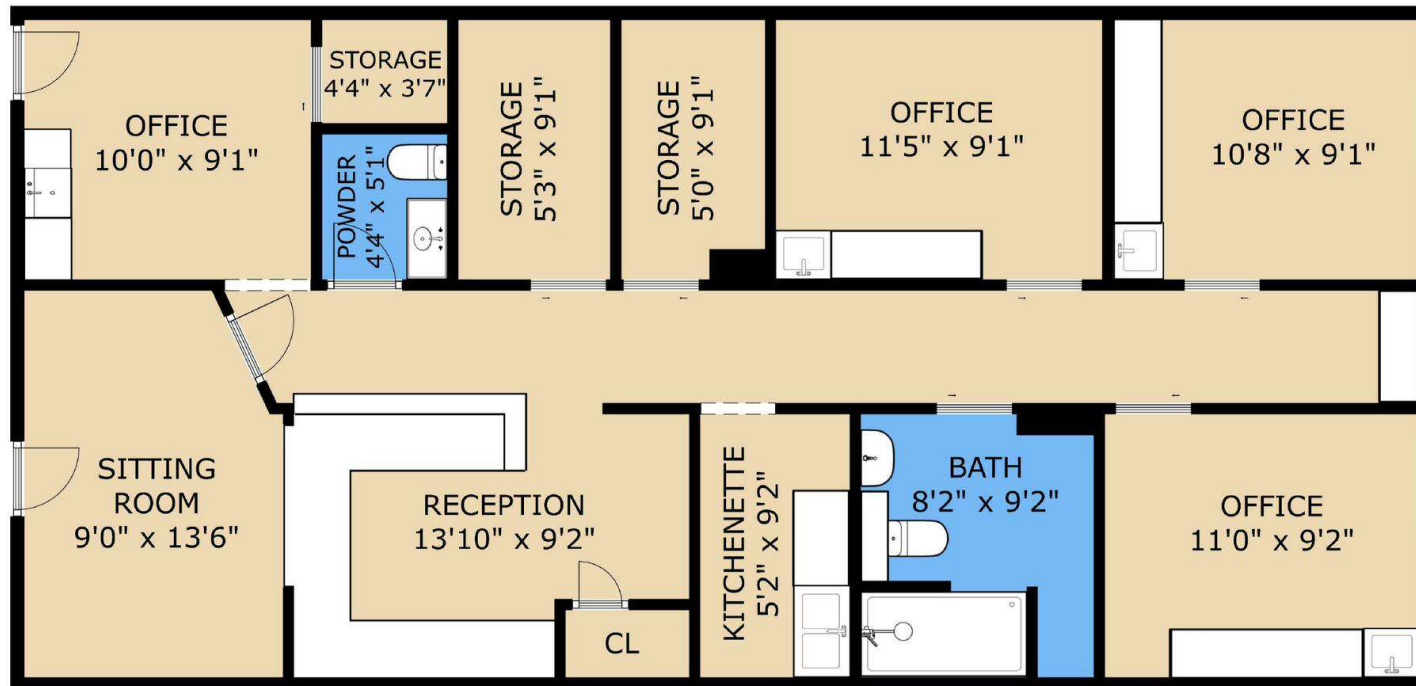
matt@matteatonccim.com

MARTIN O. MILLER III, CCIM, SIOR • PARTNER

OFFICE: 504.414.0703

MOBILE: 504.616.5700

momiller@ccim.net



Sizes And Dimensions Are Approximate, Actual May Vary

OFFICE BUILDING FOR SALE

FLOORPLAN

SOUTHEAST COMMERCIAL REAL ESTATE | 2310 19th Street Gulfport, MS 39501 | <https://southeastcre.com>



SOUTHEAST
COMMERCIAL
REAL ESTATE



RENNOVATED MEDICAL SPACE ON DOCTOR'S ROW

3939 Houma Boulevard Building 6 Suite 226, Metairie, LA 70006

MATT EATON, CCIM • PARTNER

OFFICE: 504.414.0703

MOBILE: 504.339.2136

matt@matteatonccim.com

MARTIN O. MILLER III, CCIM, SIOR • PARTNER

OFFICE: 504.414.0703

MOBILE: 504.616.5700

momiller@ccim.net

Recent Upgrades & Improvements

Upgraded electrical: new wiring & electrical panel

New flooring throughout

ADA-compliant bathroom including shower

Quartz features

Upgraded treatment rooms

Brand new HVAC system

No-touch faucets

Ample storage: sprinkled pull-down attic space



OFFICE BUILDING FOR SALE

ADDITIONAL PHOTOS

SOUTHEAST COMMERCIAL REAL ESTATE | 2310 19th Street Gulfport, MS 39501 | <https://southeastcre.com>



SOUTHEAST
COMMERCIAL
REAL ESTATE



RENNOVATED MEDICAL SPACE ON DOCTOR'S ROW

3939 Houma Boulevard Building 6 Suite 226, Metairie, LA 70006

MATT EATON, CCIM • PARTNER

OFFICE: 504.414.0703

MOBILE: 504.339.2136

matt@matteatonccim.com

MARTIN O. MILLER III, CCIM, SIOR • PARTNER

OFFICE: 504.414.0703

MOBILE: 504.616.5700

momiller@ccim.net



OFFICE BUILDING FOR SALE

ADDITIONAL PHOTOS

SOUTHEAST COMMERCIAL REAL ESTATE | 2310 19th Street Gulfport, MS 39501 | <https://southeastcre.com>



SOUTHEAST
COMMERCIAL
REAL ESTATE



RENNOVATED MEDICAL SPACE ON DOCTOR'S ROW

3939 Houma Boulevard Building 6 Suite 226, Metairie, LA 70006

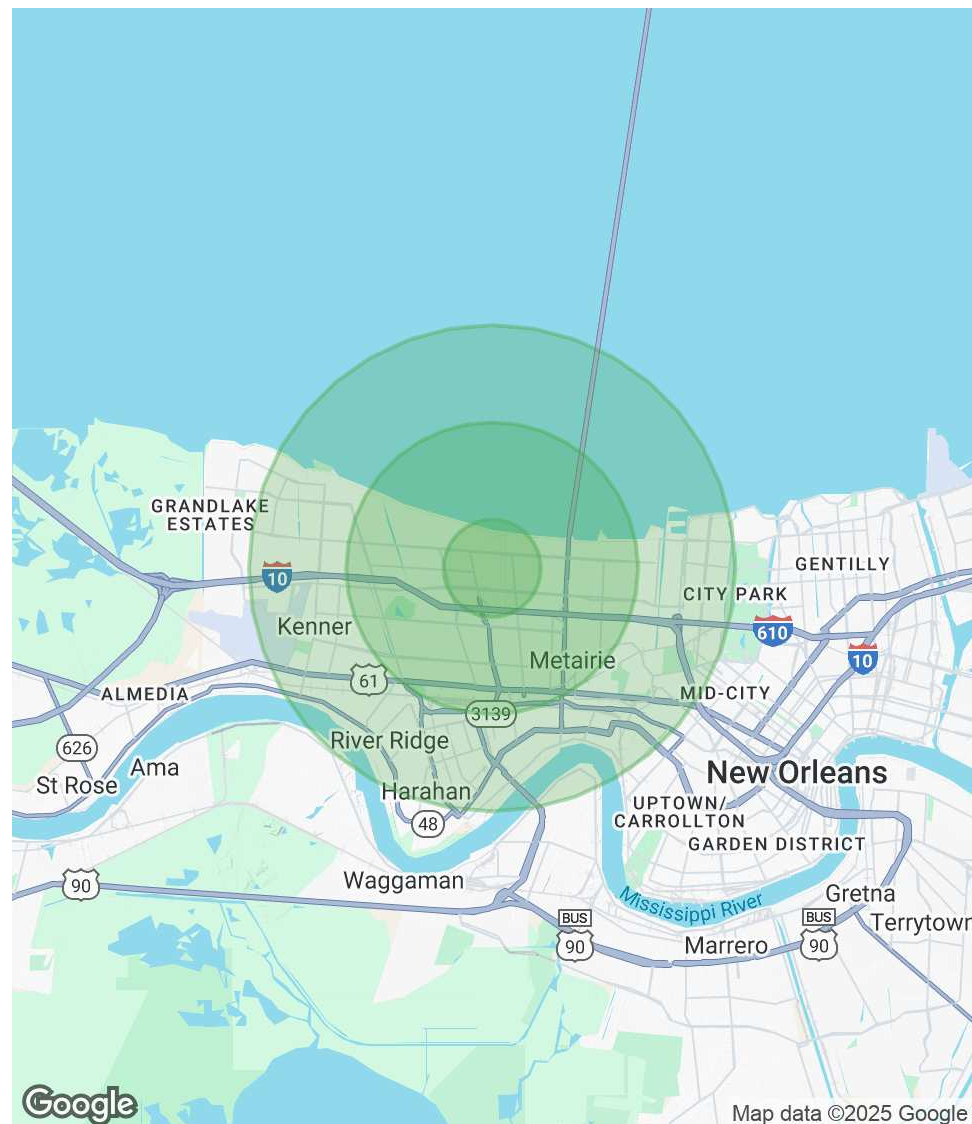
MATT EATON, CCIM • PARTNER
OFFICE: 504.414.0703
MOBILE: 504.339.2136
matt@matteatonccim.com

MARTIN O. MILLER III, CCIM, SIOR • PARTNER
OFFICE: 504.414.0703
MOBILE: 504.616.5700
momiller@ccim.net

POPULATION	1 MILE	3 MILES	5 MILES
Total Population	18,323	114,636	232,703
Average Age	42	42	42
Average Age (Male)	40	41	41
Average Age (Female)	43	44	43

HOUSEHOLDS & INCOME	1 MILE	3 MILES	5 MILES
Total Households	7,546	49,995	101,167
# of Persons per HH	2.4	2.3	2.3
Average HH Income	\$99,776	\$100,137	\$98,249
Average House Value	\$368,735	\$339,825	\$354,359

Demographics data derived from AlphaMap



OFFICE BUILDING FOR SALE

DEMOGRAPHICS MAP & REPORT



**SOUTHEAST
COMMERCIAL**
REAL ESTATE