

## Pine Ridge Dairy Road

Fruitland Park, Florida 32731

### Property Highlights

- Seller will deliver the site fully engineered and approved in collaboration with buyer
- Fruitland Reserve - 52± acres conceptually planned for 219± lots
- Lot Sizes: 40 ft & 50 ft x 110 ft
- Annexed into City of Fruitland Park
- Water and sewer available
- Well drained; little to no fill required
- Join with adjacent 60± ac and/or 52± ac parcels



**Sale Price: \$7,950,000**

For more information

**Jason G. Toll, MiCP**

O: 407 949 0716  
jtoll@realvest.com



Aerial

The Glen

**SITE**

Pine Ridge Dairy Rd

Additional 60± Acres Available

*The Villages*

First Baptist Church  
of Leesburg  
Village Park

Additional 52± Acres Available

Miller Blvd / CR 466A

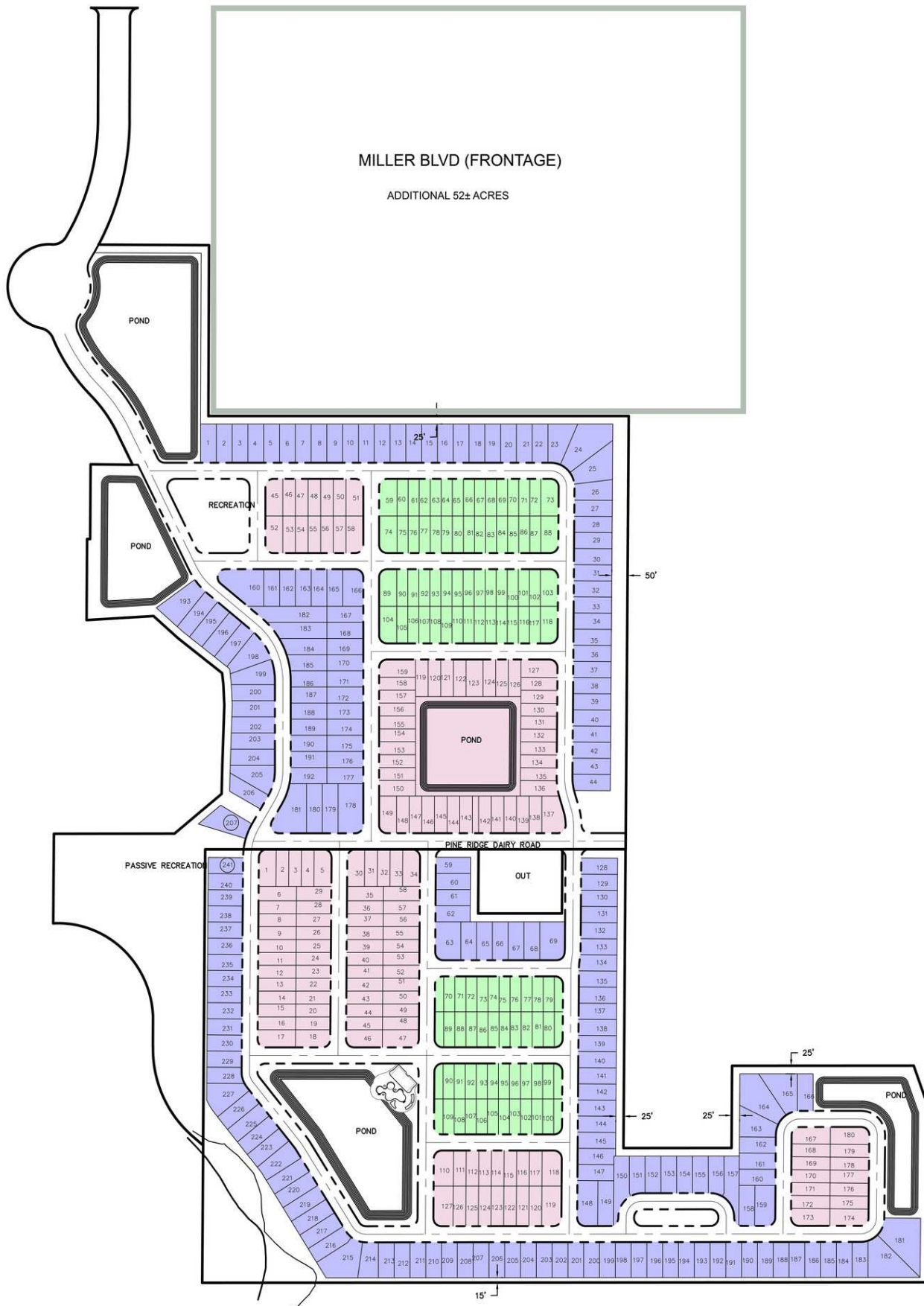
**NAI** Realvest®

The information contained herein has been given to us by the owner of the property or other sources we deem reliable. We have no reason to doubt its accuracy, but we do not guarantee it. All information should be verified prior to purchase or lease. Unless otherwise noted, the property is being offered as-is, where is, with all faults.

1800 Pembroke Drive, Suite 350  
Orlando, FL 32810  
407 875 9989 tel  
[nairealvest.com](http://nairealvest.com)

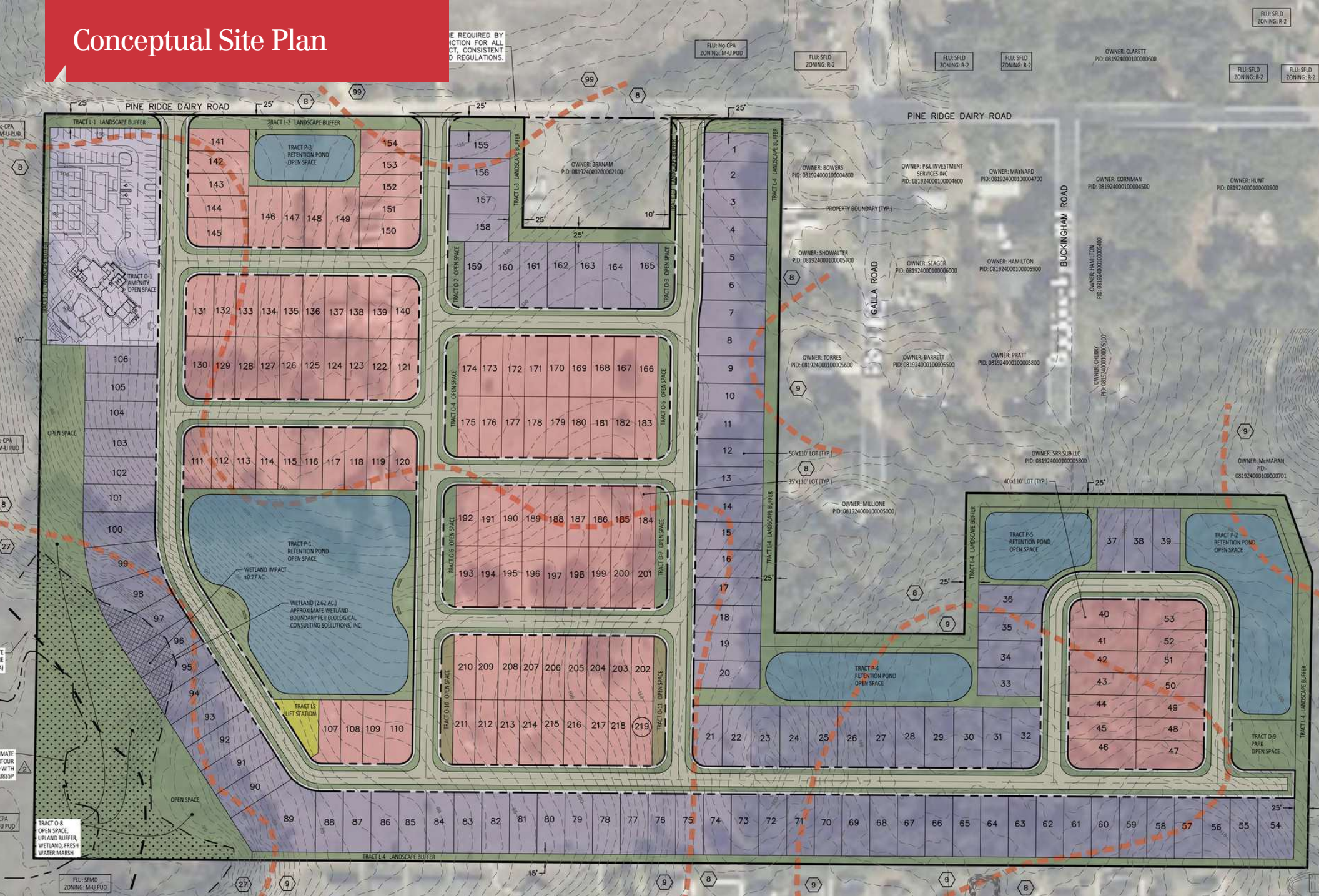


# Conceptual Site Plan





# Conceptual Site Plan





# Location Maps

