

# WOLF

# REALTY, INC.



14021 N. 51st Ave, Ste 114 • Glendale, AZ 85306-4840  
Phone: (602) 843-5200 • FAX: (602) 843-5718

## LEASE OPPORTUNITY 2310 WEST BELL ROAD

- \* C-2 ZONING
- \* LARGE MONUMENT SIGN ON BELL ROAD
- \* BUILDING SIGNAGE:
- \* TRAFFIC COUNT: 47,000/DAY
- \* 23 PARKING
- \* GATED PARKING

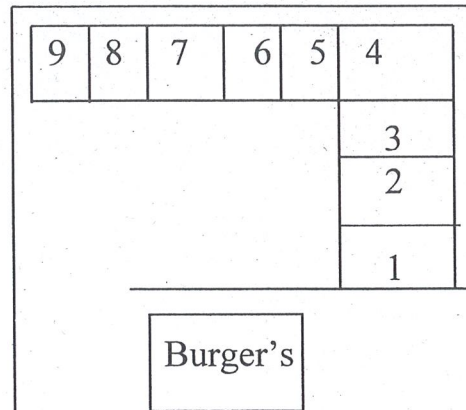


- \* Suite 3, 730 sqft. \$975/ month
- \* Suite 8, 640 sqft. \$855/ month

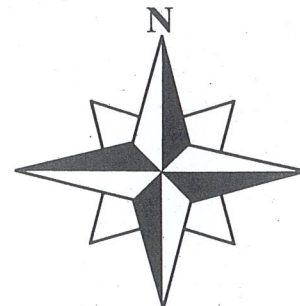
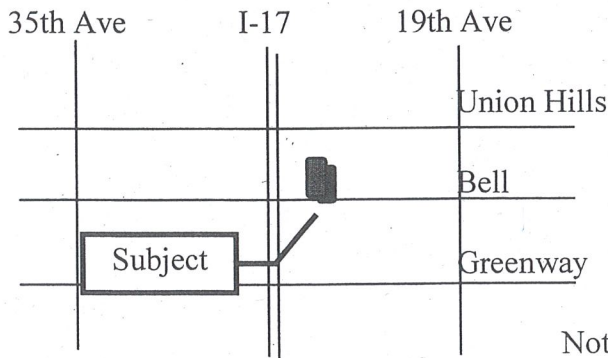
Prices starting at \$16.00/PSF Base year Gross

For details contact:

**Scot E. Hall**  
 Broker  
 Wolf Realty, Inc.  
 14021 N. 51st Avenue #114  
 Glendale, Arizona 85306  
 (602) 843-5200



\*\*\*\*\*



Not to scale

Information furnished is from sources deemed reliable. We have no reason to doubt it's accuracy, but we do not guarantee it. Purchaser should independently verify all information. This offering is submitted subject to errors and omissions, change in price, sale, financing and/or withdrawal without notice.

**2310 W Bell Road, Phoenix, AZ. 85023**

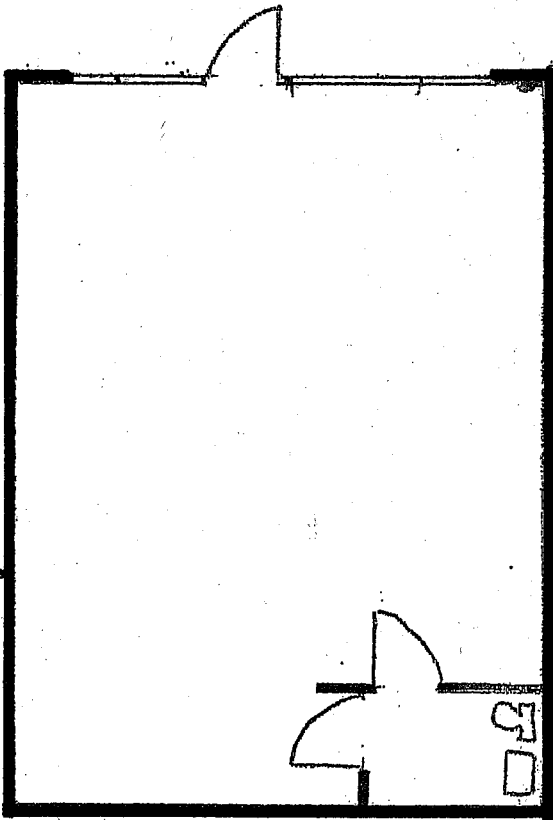
Suite 1, 730 sqft, leased  
Suite 2, 730 sqft. leased  
**Suite 3, 730 sqft. Available**  
Suite 4/5, 1440 sqft leased

Suite 6, 640 sqft leased  
Suite 7, 640 sqft, leased  
**Suite 8, 640 sqft Available**  
Suite 9, 663 sqft, leased

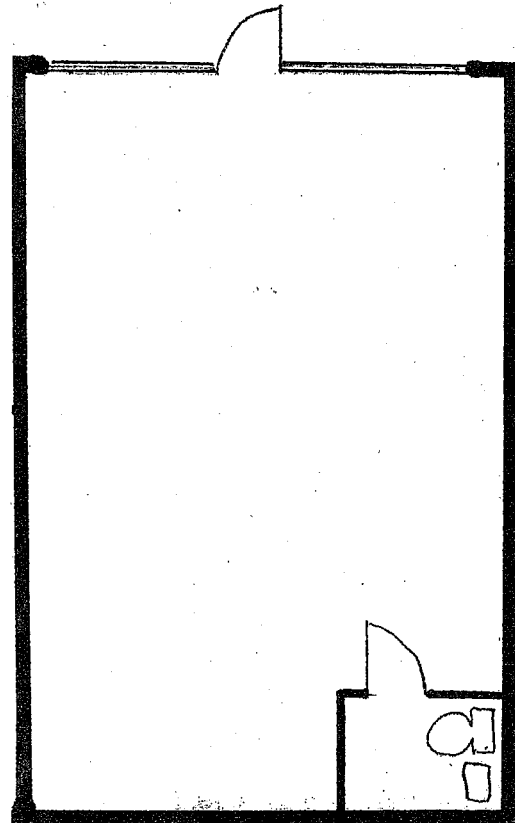
Suite 3, all open space with VCT flooring throughout, additional plumbing adjacent to private restroom.

Suite 8, All open retail space with private restroom.

Suite 3



Suite 8





# Map

