

FOR LEASE



±7,440 SQFT.
Flex Warehouse and
Office Space



1201/1209 WH JACKSON ST &
2490 S HARBOR CITY BLVD
MELBOURNE, FLORIDA

FOR INFO CONTACT:

MIKE MOSS, SIOR
Principal | Director
321.543.2498
Mike@teamlbr.com

MICHAEL MOSS II
Associate
321.266.1150
mmoss@teamlbr.com

LUKE BROWN
Associate
603.244.8052
Luke@teamlbr.com



Off Of US-1
Melbourne, Florida

5,000 & 2,240
SQFT. Buildings

HIGHLIGHTS | FOR LEASE

Space Size 7,440 SF

Available 02/01/2025

Clear Height +/-24' & 14'

Parking 24 Striped

Zoning C-2 (Melbourne)

Lease Type MG

Grade Level Doors

-Building 1: (3) 14' x 12'

-Building 2: (2) Varying Sizes

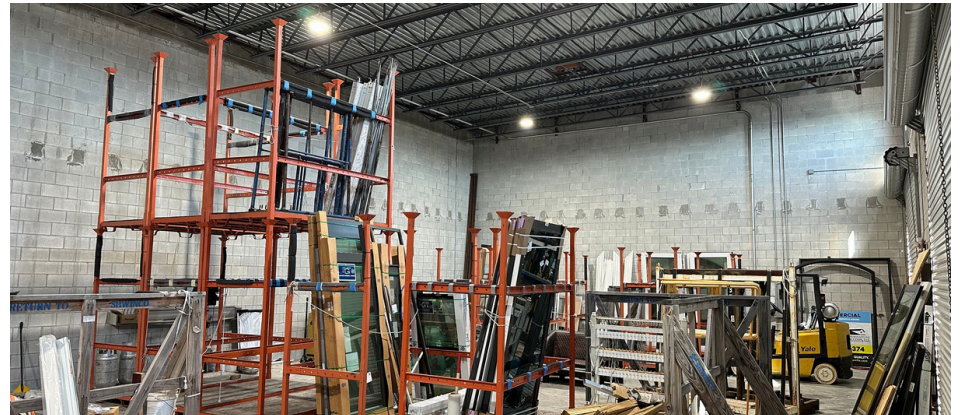
OVERVIEW

Located directly on US-1 in Central Brevard County, this property holds close proximity to both I-95 (6.9 Miles) and Melbourne Orlando International Airport (3.5 Miles).

The space offers 7,440 square feet that features roughly +/-2,000 SQFT. of office spaces (10 total offices), 3,000 SQFT. of open warehouse with +/-24' CH, and 2,240 SQFT. of open warehouse with +/-14' CH. There are a total of 24 striped parking spaces (2 Handicap) and 5 total grade level bay doors.

Contact us today to learn more about these two stand-alone flex/ warehouse opportunities!

PHOTOS



ADDITIONAL IMAGES

LBR



www.TEAMLBR.com | 2490 S HARBOR CITY BLVD | FOR LEASE

LOCATION

LBR

