

FOR LEASE

Owned and Operated by



# TAMPA DISTRIBUTION CENTER

1212 N. 50th STREET | TAMPA, FL 33619



## 2,500-80,000 SF AVAILABLE



### LEASING INFO & CONTACT

**Jessica Mizrahi, SIOR**  
**Julia Silva, SIOR**  
**Erika Thompson, SIOR**  
**Ben Ewers**

813.804.0886 [jmizrahi@lee-associates.com](mailto:jmizrahi@lee-associates.com)  
813.230.8008 [jsilva@lee-associates.com](mailto:jsilva@lee-associates.com)  
813.215.4342 [ethompson@lee-associates.com](mailto:ethompson@lee-associates.com)  
352.362.8535 [bewers@lee-associates.com](mailto:bewers@lee-associates.com)

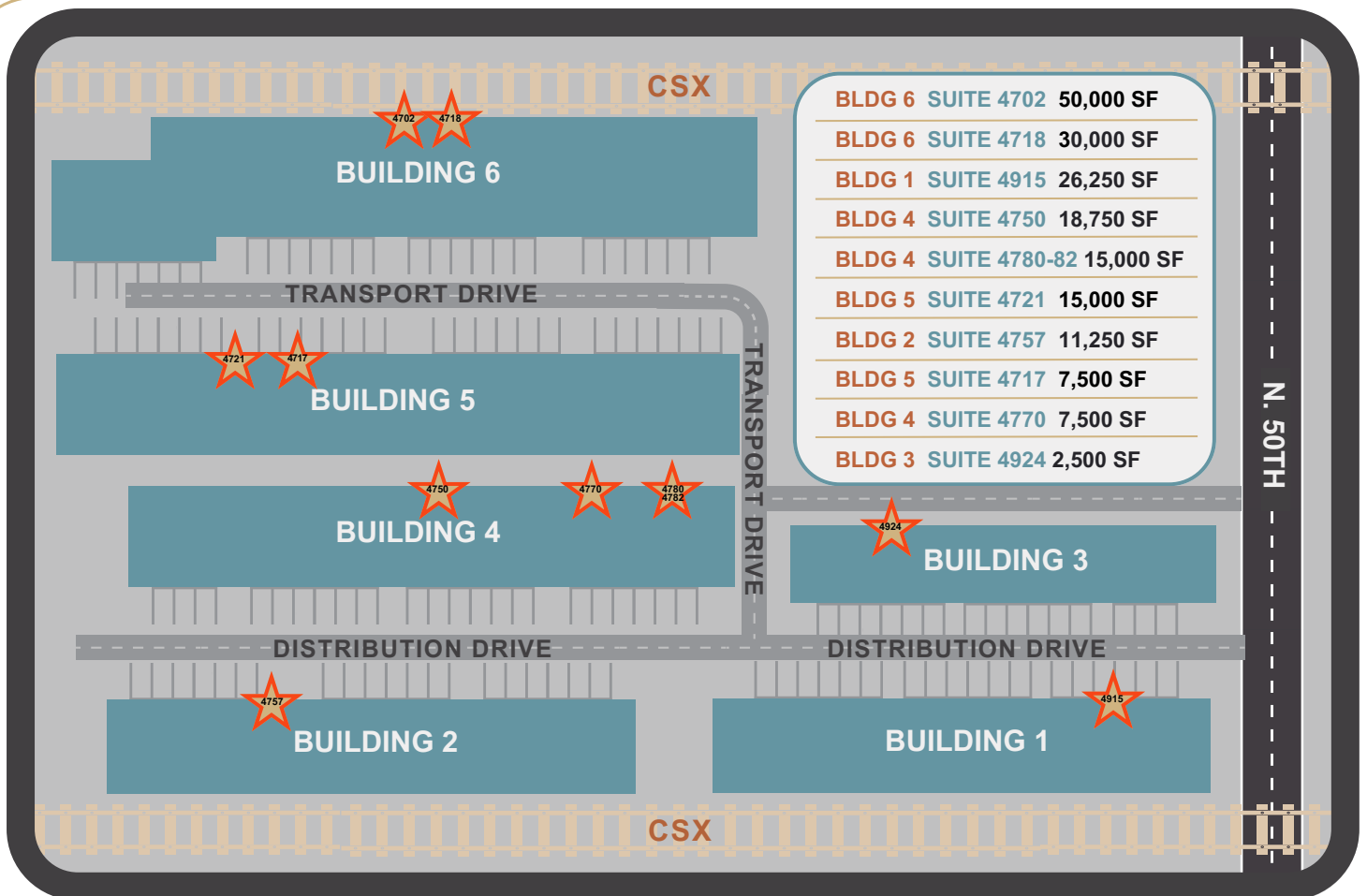
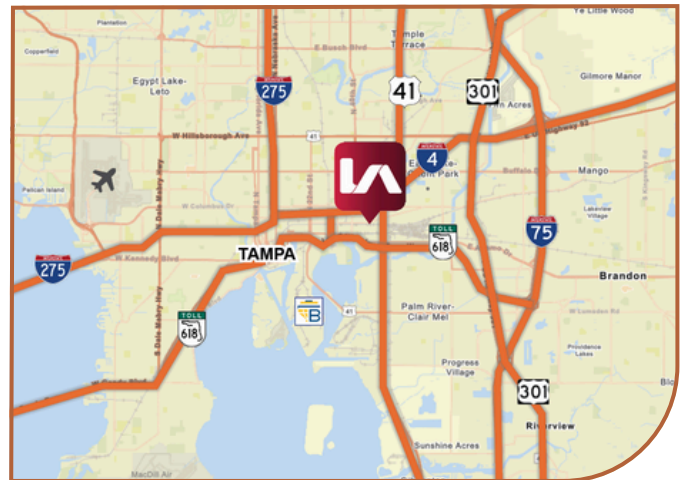
 **LEE &  
ASSOCIATES**  
COMMERCIAL REAL ESTATE SERVICES  
TAMPA BAY

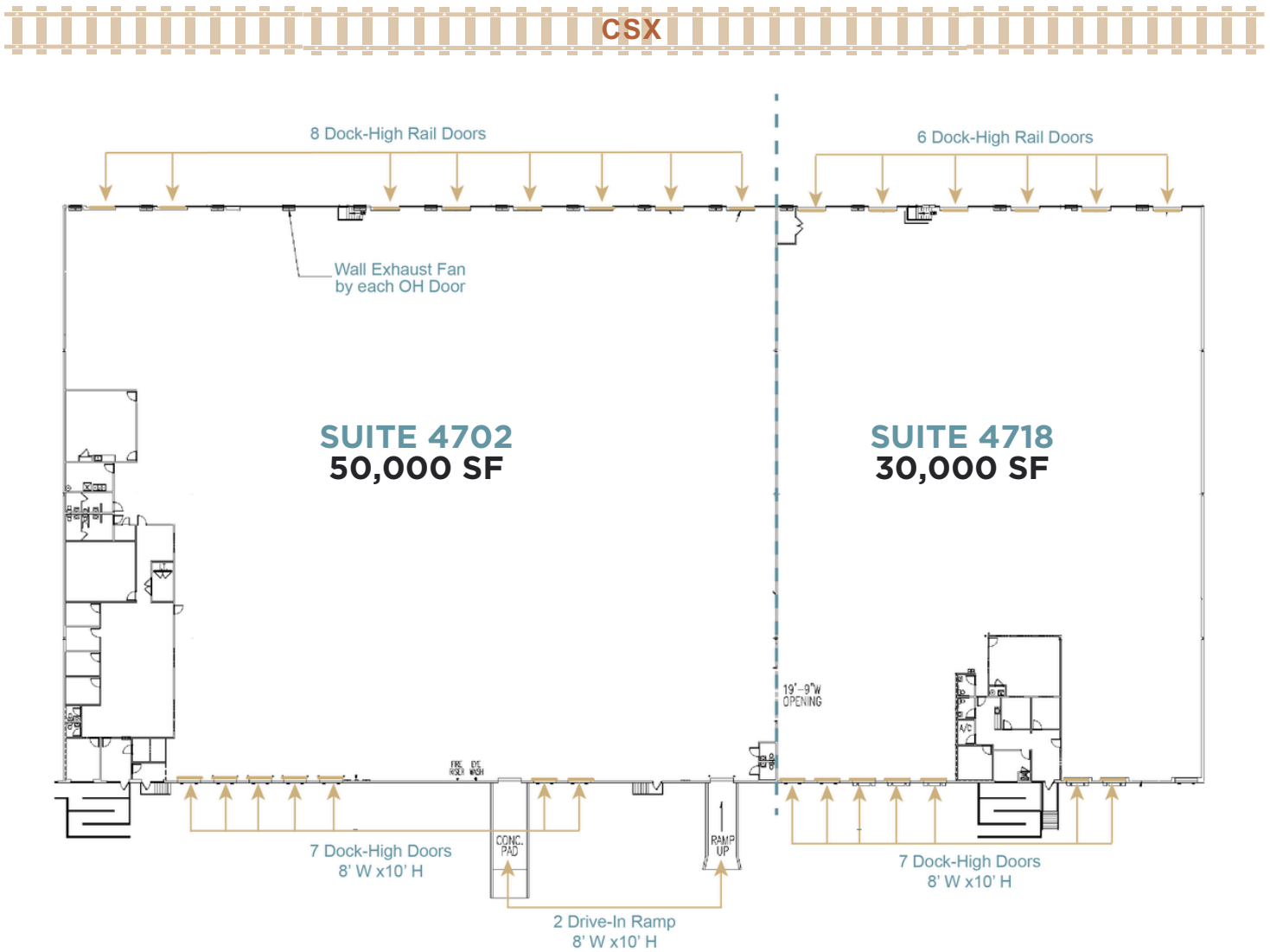
This is not an offer or acceptance of an offer to lease space. A lease will only be offered or made in a written agreement signed by landlord. No representation or warranty of any kind is made by landlord unless set forth in a written definitive lease executed by the landlord.

## LOCATION OVERVIEW

Tampa Distribution Center, situated at 1212 N. 50th Street, Tampa, FL 33619, is an industrial property suited for warehousing and distribution users. This facility provides a solution for businesses in need of a strategically located and highly efficient distribution center within Tampa's industrial hub, offering immediate access to I-4, I-75, the Lee Roy Selmon Expressway, and Adamo Drive (SR 60).

- **SR 60**..... 0.3 miles | 1 minute
- **I-4**..... 0.8 miles | 3 minutes
- **U.S. Hwy. 301**..... 2.9 miles | 7 minutes
- **Selmon Expwy**..... 3 miles | 8 minutes
- **Port Tampa Bay**..... 4.9 miles | 12 minutes
- **I-75**..... 5.5 miles | 15 minutes
- **Tampa Int'l Airport**..... 10.5 miles | 32 minutes





## BLDG 6 | SUITE 4702

<b>TOTAL SF</b>	50,000
<b>OFFICE SF</b>	± 8,477
<b>OCCUPANCY</b>	Available Now
<b>CLEAR HEIGHT</b>	20'
<b>LOADING</b>	7 Dock-High Doors, 2 Drive-in Ramps
<b>RAIL</b>	8 Dock-High Rail Doors
<b>POWER</b>	3 Phase, 208v
<b>SPRINKLERS</b>	Wet Pipe

## BLDG 6 | SUITE 4718

<b>TOTAL SF</b>	30,000
<b>OFFICE SF</b>	± 4,722
<b>OCCUPANCY</b>	Available June 1, 2025
<b>CLEAR HEIGHT</b>	20'
<b>LOADING</b>	7 Dock-High Doors
<b>RAIL</b>	6 Dock-High Rail Doors
<b>POWER</b>	3 Phase, 208v
<b>SPRINKLERS</b>	Wet Pipe



**SUITE 4915**  
**26,250 SF**

**FLOOR PLAN**  
**COMING SOON!**

**BLDG 1 | SUITE 4915**

**TOTAL SF** 26,250

**OFFICE SF** ± TBD

**OCCUPANCY** Available February 1, 2025

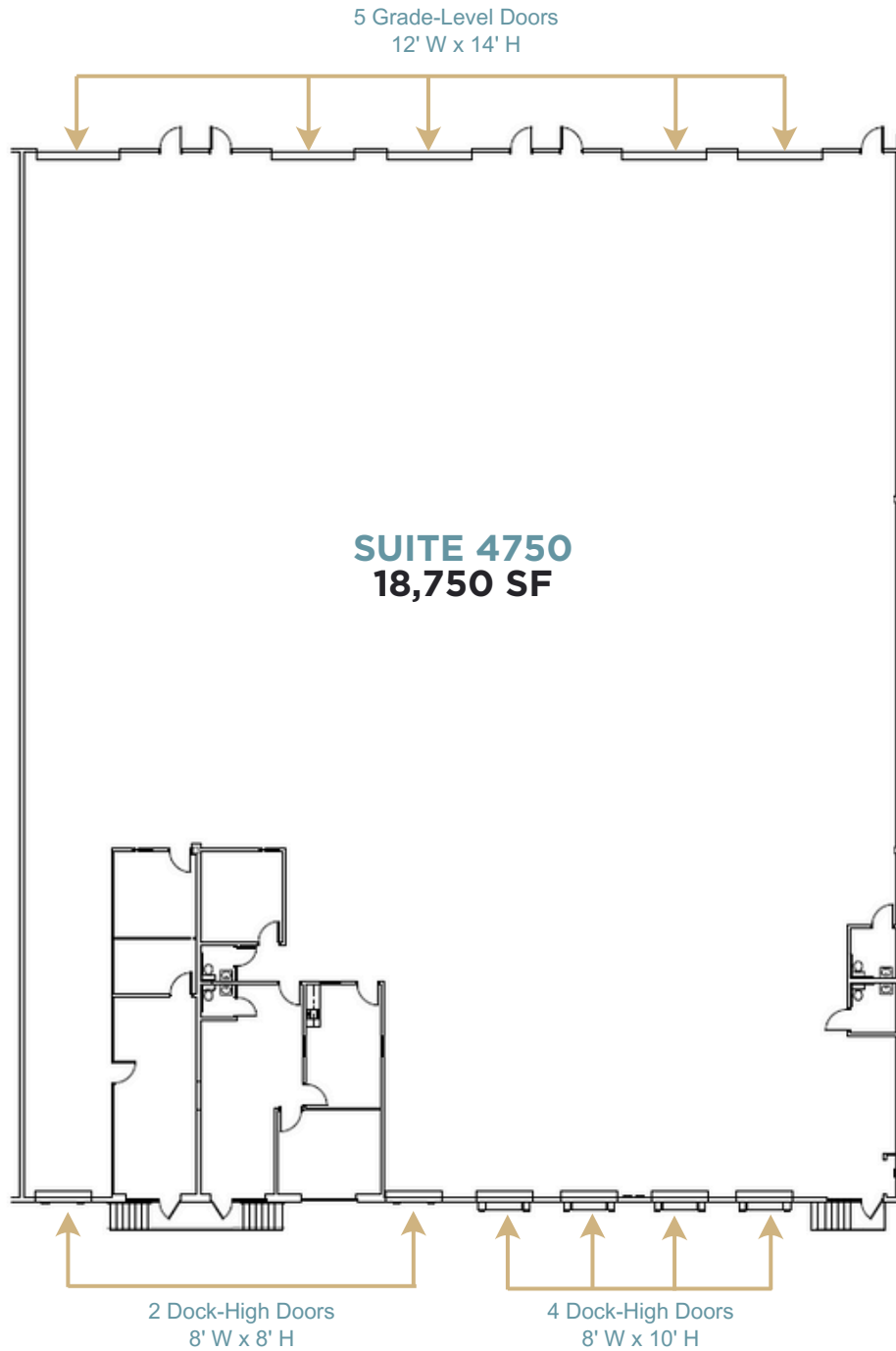
**CLEAR HEIGHT** 20'

**LOADING** 5 Dock-High Doors, 1 Drive-In Ramp

**RAIL** TBD

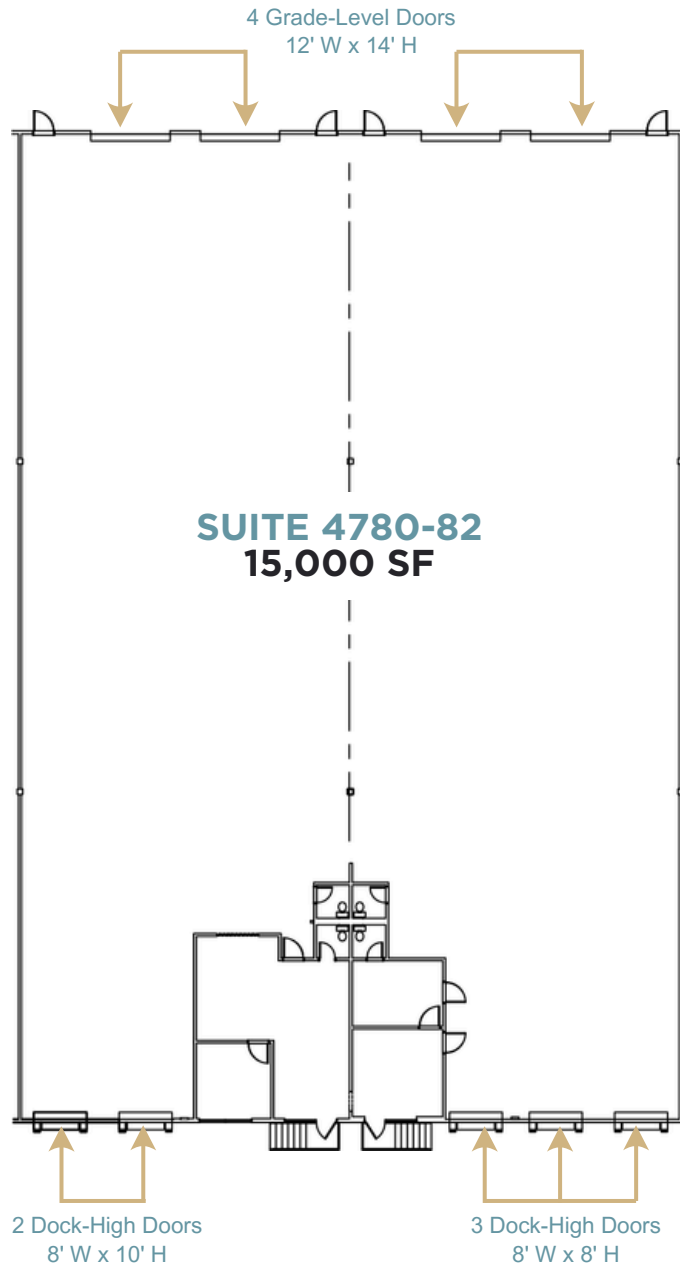
**POWER** 3 Phase, 120/208v, 200 Amp

**SPRINKLERS** Wet Pipe



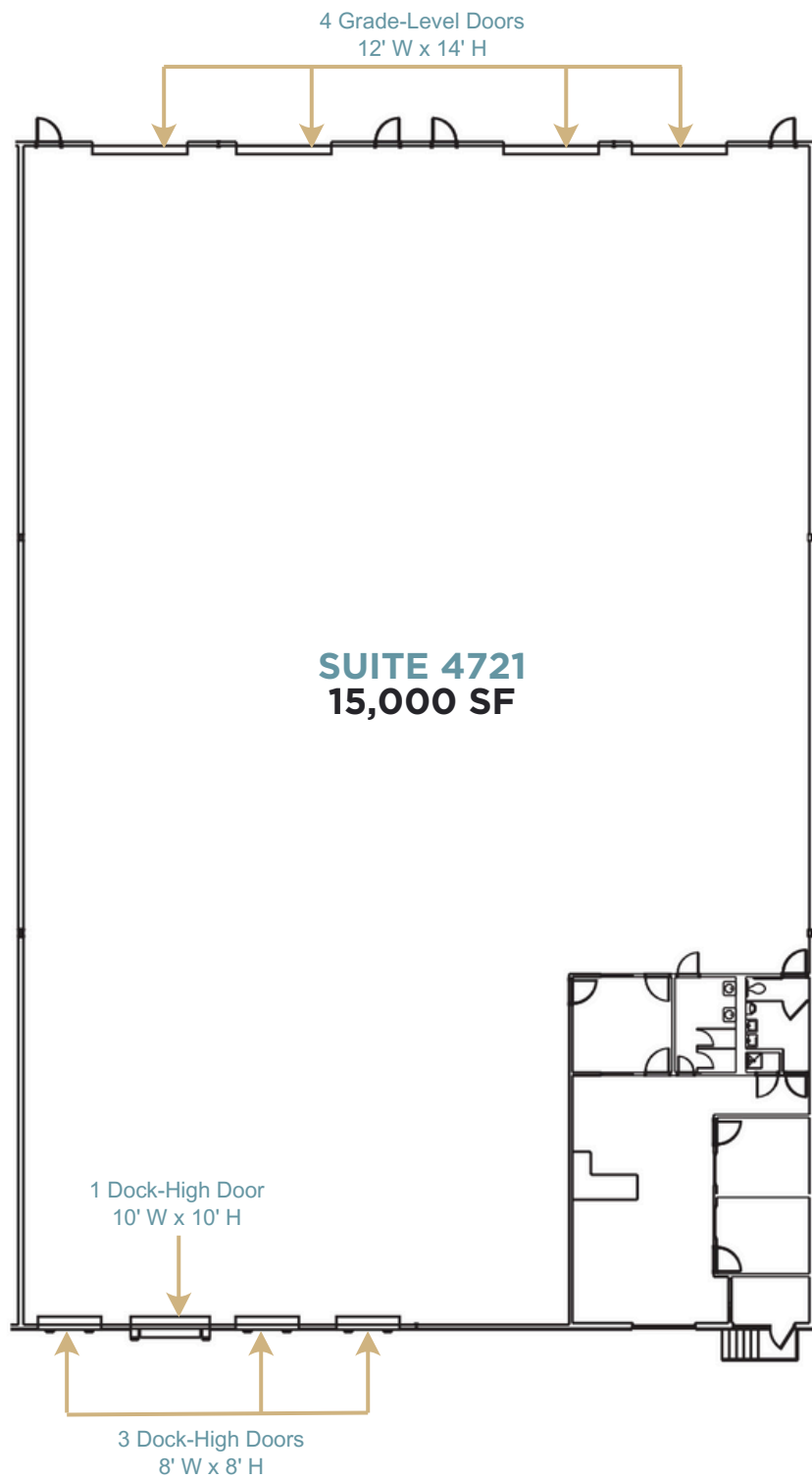
## BLDG 4 | SUITE 4750

<b>TOTAL SF</b>	18,750	<b>LOADING</b>	6 Dock-High Doors, Ability to add 1 additional
<b>OFFICE SF</b>	± 1,633		5 Grade-Level Doors
<b>OCCUPANCY</b>	Available July 1, 2025	<b>POWER</b>	3 Phase, 277/480v, 400 Amp
<b>CLEAR HEIGHT</b>	20'	<b>SPRINKLERS</b>	Wet Pipe



## BLDG 4 | SUITE 4780-82

<b>TOTAL SF</b>	15,000	<b>LOADING</b>	5 Dock-High Doors, 4 Grade-Level Doors
<b>OFFICE SF</b>	± 1,110	<b>POWER</b>	3 Phase, 120/208v, 125 Amp
<b>OCCUPANCY</b>	Available Now	<b>SPRINKLERS</b>	Wet Pipe
<b>CLEAR HEIGHT</b>	20'		



## BLDG 5 | SUITE 4721

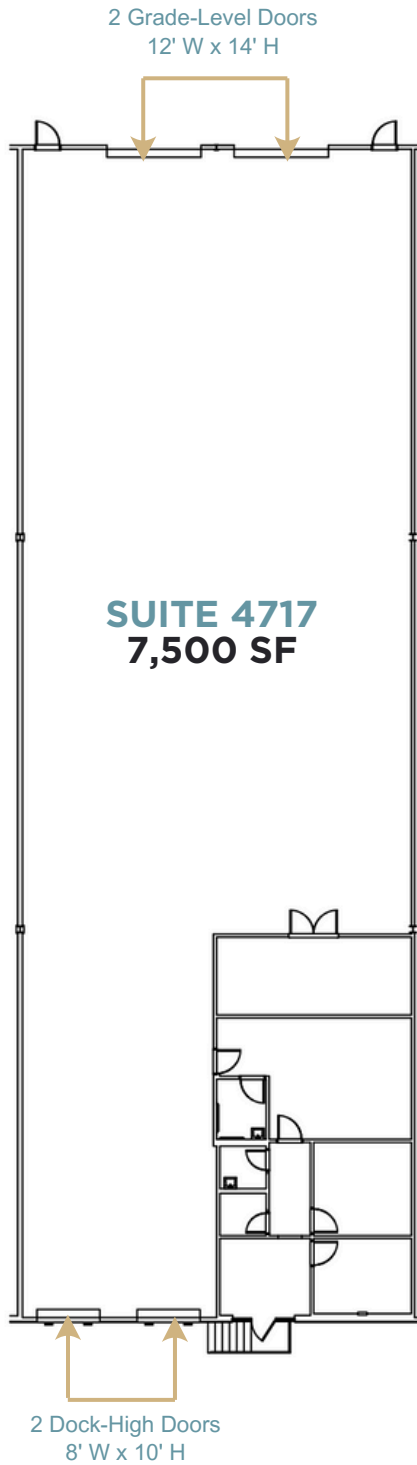
<b>TOTAL SF</b>	15,000	<b>LOADING</b>	4 Dock-High Doors, 4 Grade-Level Doors
<b>OFFICE SF</b>	± 1,348	<b>POWER</b>	3-Phase, 120/208v, 150 Amp
<b>OCCUPANCY</b>	Available April 1, 2025	<b>SPRINKLERS</b>	Wet Pipe
<b>CLEAR HEIGHT</b>	18'		



## BLDG 2 | SUITE 4757

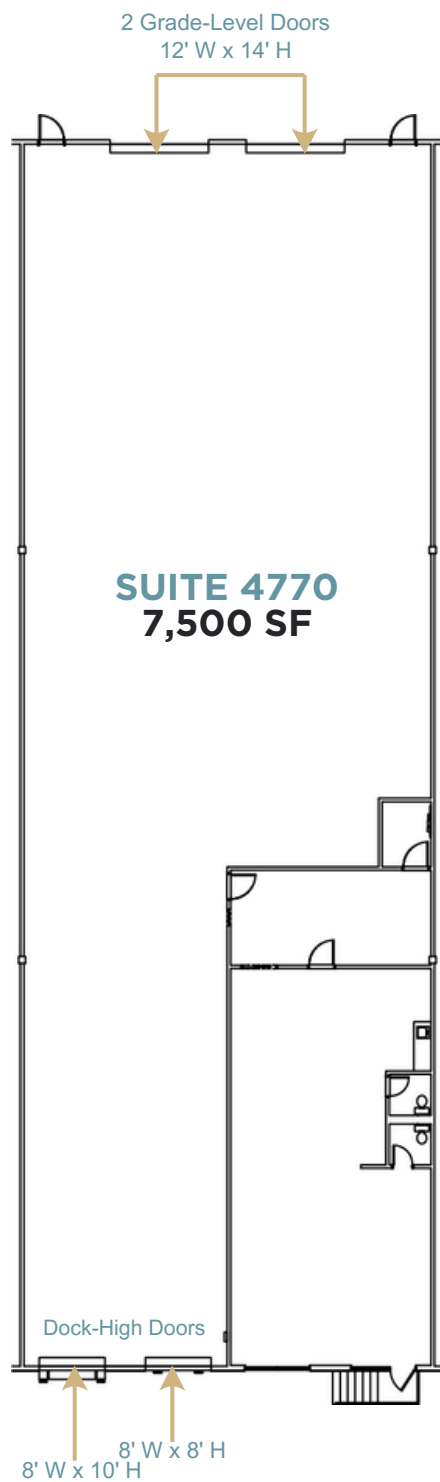
<b>TOTAL SF</b>	11,250	<b>LOADING</b>	3 Dock-High Doors, 1 Drive-In Ramp
<b>OFFICE SF</b>	± 1,300	<b>RAIL</b>	3 Dock-High Rail Doors
<b>OCCUPANCY</b>	Available Now	<b>POWER</b>	3 Phase, 120/240v, 100 Amp
<b>CLEAR HEIGHT</b>	20'	<b>SPRINKLERS</b>	Wet Pipe





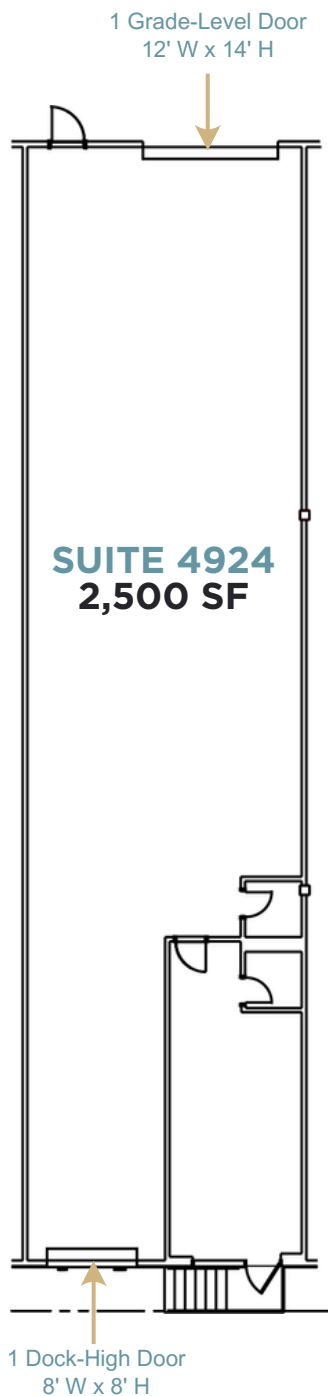
## BLDG 5 | SUITE 4717

<b>TOTAL SF</b>	7,500	<b>LOADING</b>	2 Dock-High Doors, 2 Grade-Level Doors
<b>OFFICE SF</b>	± 1,219	<b>POWER</b>	3-Phase, 120/208v, 200 Amp
<b>OCCUPANCY</b>	Available April 1, 2025	<b>SPRINKLERS</b>	Wet Pipe
<b>CLEAR HEIGHT</b>	20'		



## BLDG 4 | SUITE 4770

<b>TOTAL SF</b>	7,500	<b>LOADING</b>	2 Dock-High Doors 2 Grade-Level Doors
<b>OFFICE SF</b>	± 1,568	<b>POWER</b>	3 Phase, 120/208v, 125 Amp
<b>OCCUPANCY</b>	Available August 1, 2025	<b>SPRINKLERS</b>	Wet Pipe
<b>CLEAR HEIGHT</b>	20'		



## BLDG 3 | SUITE 4924

**TOTAL SF** 2,500

**OFFICE SF** ± 500

**OCCUPANCY** Available February 1, 2025

**CLEAR HEIGHT** 20'

**LOADING** 1 Dock-High Door, 1 Grade-Level Door

**POWER** 3 Phase, 120/240v, 100 Amp

**SPRINKLERS** Wet Pipe