

INTERNATIONAL AIRPORT CENTER

2722 NW 72ND AVE, MIAMI, FL 33122

+/- 3,800 SF Available For Lease



PROPERTY DESCRIPTION

International Airport Center offers the best of two worlds, dock high warehouses and wholesale store front units. IAC offers excellent proximity to MIA Cargo perfect for import/export or freight forwarding companies. With unit sizes from 1,900 to over 20,000 square feet, fully airconditioned office space and 150' truck courts, IAC provides functional commercial space within the Miami-Dade Airport West Commercial Market

LOCATION DESCRIPTION

Situated between NW 26th Street and NW 31st Street on NW 72nd Avenue, International Airport Center offers convenient access to all major thoroughfares as well as excellent frontage and exposure. IAC is only minutes away from the Palmetto Expressway which in turn provides access to every highway and port in the county. Miami International Airport and PortMiami are accessible within minutes from Dolphin Expressway, Broward County and Port Everglades from I-75 and I-95. Florida Turnpike is easily accessible to the West.

PROPERTY FEATURES:

- +/- 3,800 Sq. Ft. Total
- +/- 500 Sq. Ft. Office
- +/- 1,000 Sq. Ft. Cooler
- +/- 2,300 Sq. Ft. Warehouse
- One (1) Dock High Loading Door
- 18' Clear Ceiling Height
- Close proximity to MIA

MORE INFORMATION

Alexander Bernaldo, SIOR
President
786.337.7877
Alex@AmericasCRE.com

Raymond Diaz.
Senior Commercial Advisor
786.337.7883
Raymond@AmericasCRE.com

Yusef Cnaan
Commercial Associate
786.337.7882
Yusef@americascre.com

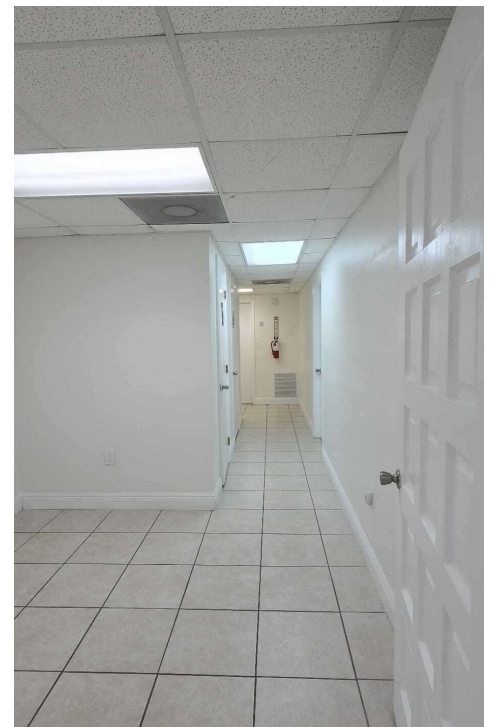




INTERNATIONAL AIRPORT CENTER

2722 NW 72ND AVE, MIAMI, FL 33122

+/- 3,800 SF Available For Lease



MORE INFORMATION

Alexander Bernaldo, SIOR
President
786.337.7877
Alex@AmericasCRE.com

Raymond Diaz.
Senior Commercial Advisor
786.337.7883
Raymond@AmericasCRE.com

Yusef Canaan
Commercial Associate
786.337.7882
Yusef@americascre.com



Copyright © 2023 Americas Commercial Real Estate. Any information herewith is obtained from sources we consider reliable. However, we are not responsible for misstatement of facts, errors, omissions, prior sale, withdrawal from the market, modification of mortgage commitment, terms and conditions, or change in price without prior notice.