



## LISTING DATA

**Available SF:** Suite 3640 | 4,800 SF  
Suite 3620 | 8,400 SF

**Building Size:** 39,600 SF

**Clear Height:** 18'

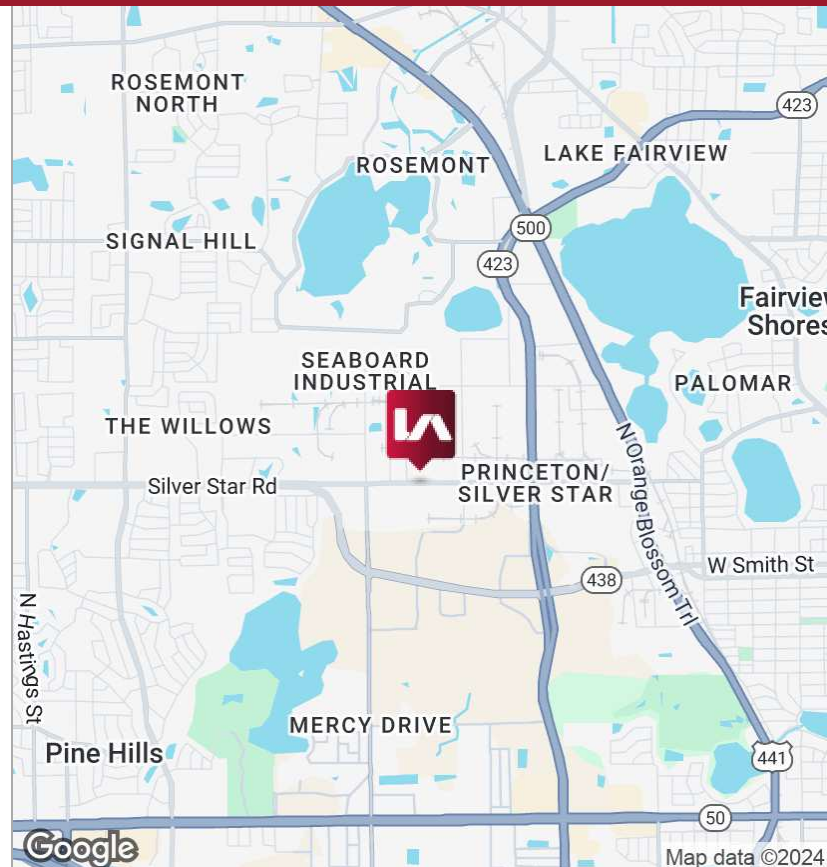
**Zoned:** I-P/W, City of Orlando

**Loading:** Rear

## ECONOMIC DATA

**Lease Rate:** \$14.50 - \$15.00/SF NNN

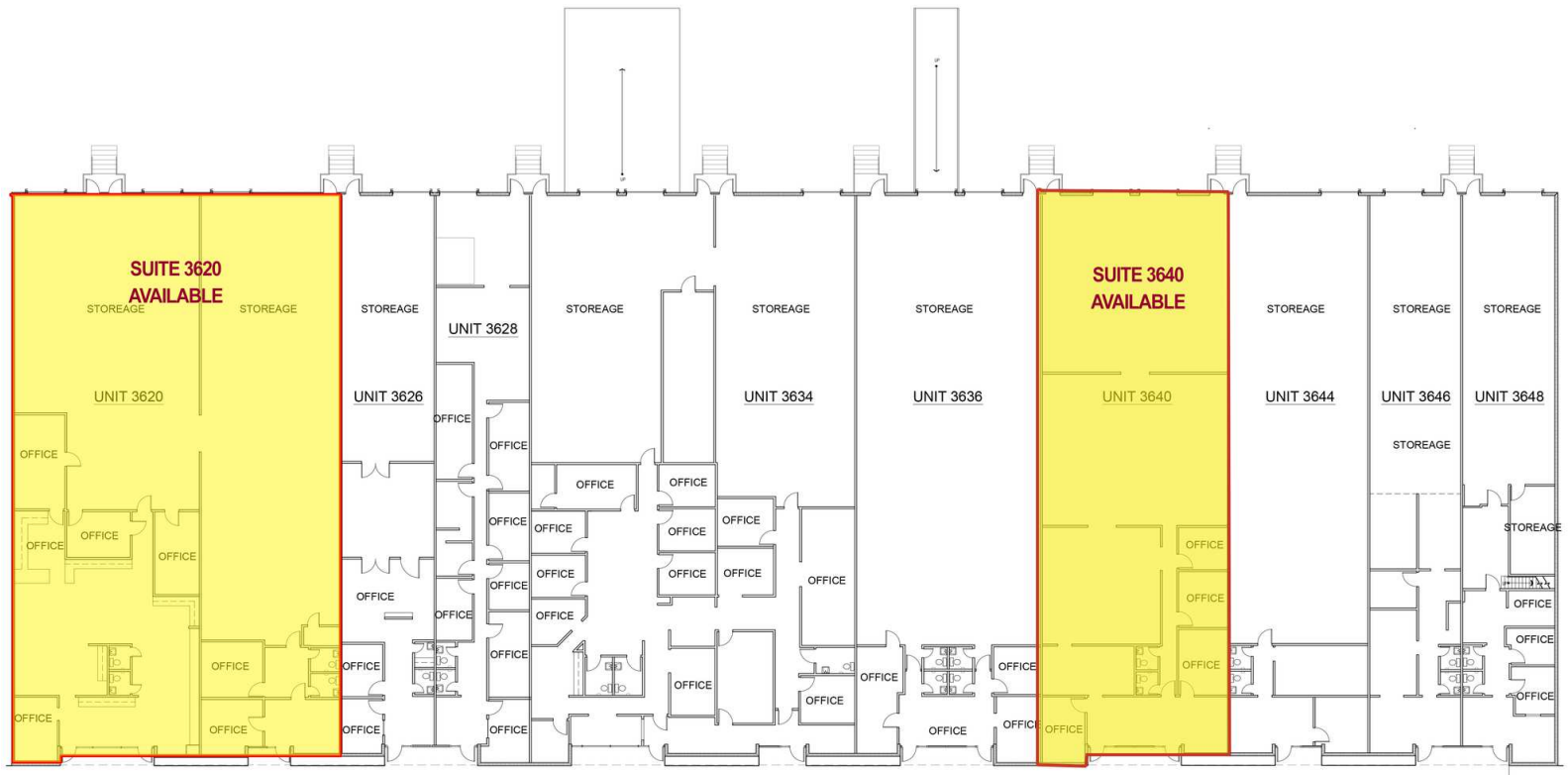
**Op Ex:** \$3.53/SF

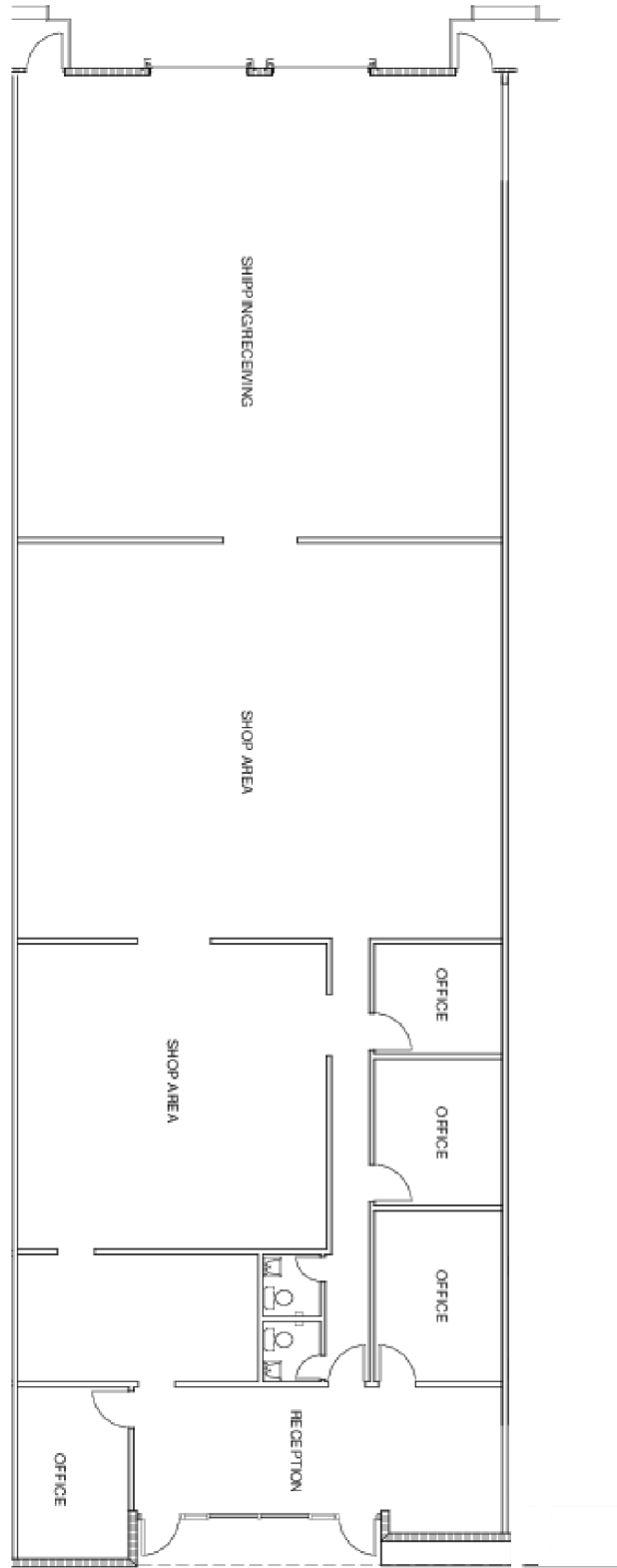




**AVAILABLE SPACES**

SUITE	SIZE (SF)	LEASE TYPE	LEASE RATE	DESCRIPTION
Suites 3640	4,800 SF	NNN	\$15.00 SF/yr	2,063 SF Office with two (2) dock high doors
Suite 3620	8,400 SF	NNN	\$14.50 SF/yr	3,083 SF Office with One (1) dock high door and one (1) 10' wide x 12' high grade level door

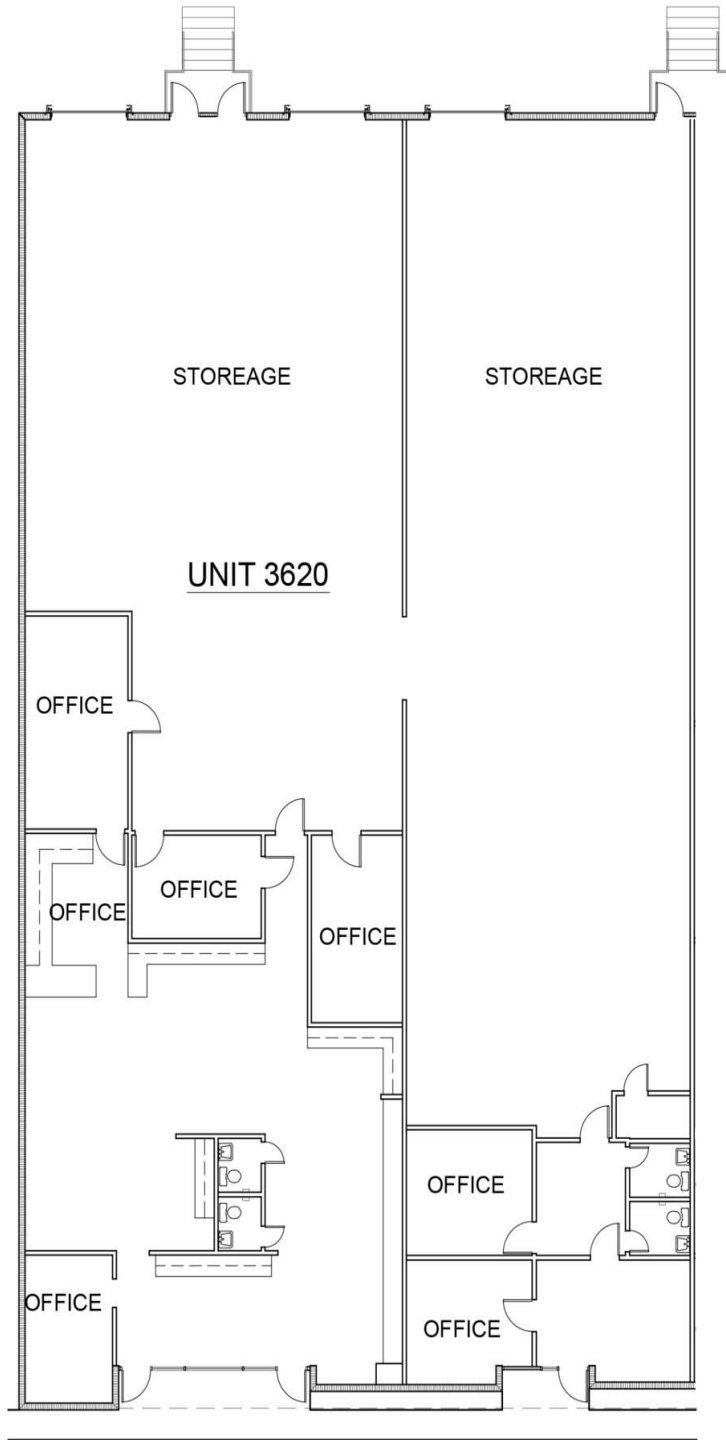




Suite 3640 | 4,800 SF







SUITE 3620 SF | 8,400 SF

