

Edgewater & Fairbanks Office / Warehouse

4340 Edgewater Dr, Orlando, FL 32804

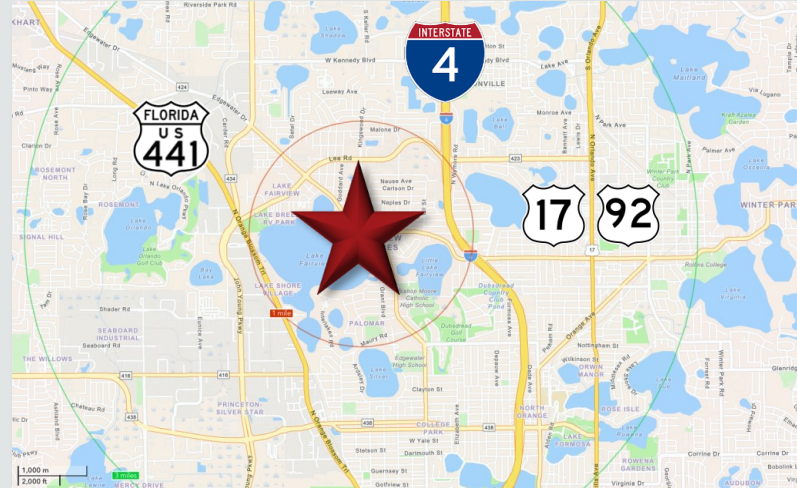
Palkiper
Commercial Real Estate Services
Licensed Real Estate Broker



\$21.00 psf/yr MG

LOCATION DETAILS

Situated along Edgewater Drive at the terminus of the three-leg intersection where Fairbanks Avenue ends. This area sees high traffic counts, with +22,300 CPD on Fairbanks Avenue and +22,500 CPD on Edgewater Drive in 2023. Nearby major thoroughfares include Lee Road, US 441, and I-4, less than 1 mile away.



PROPERTY DETAILS

- **±7,023 SF** Office building / warehouse
- **Excellent visibility** with 125 feet of direct frontage on Edgewater Dr
- **Traffic signal at the entrance/exit** allows easy access to the front parking lot (15 spaces, including a Tesla charging space) with **additional parking in the back**
- Includes **1 roll-up door**, a covered outdoor storage area with gate, boating dock overlooking Lake Fairview, and **4 bathrooms total**, including one with a tub/shower
- Zoned C-2

2023 DEMOGRAPHICS	1-MILE	3-MILE	5-MILE
Population	6,862	87,268	211,983
Average HH Income	\$54,453	\$65,814	\$76,083
Median HH Income	\$34,181	\$47,108	\$54,178

CONTACT FOR MORE INFORMATION

Marie Shorey, CCIM
(407) 383-8142
marie@palkiper.com

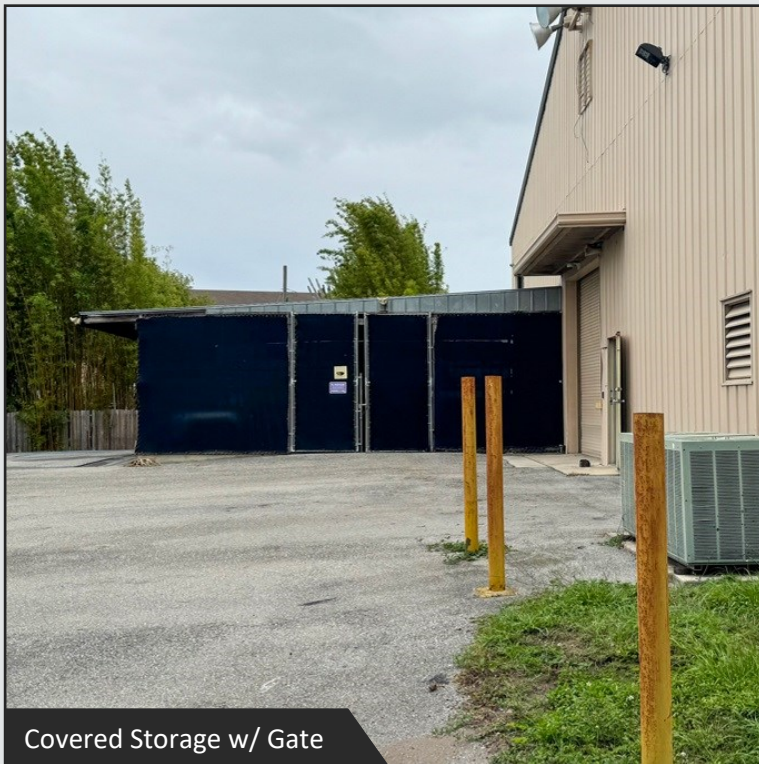
Edgewater & Fairbanks Office with Warehouse

4340 Edgewater Dr, Orlando, FL 32804

 **Palkiper**
Commercial Real Estate Services
Licensed Real Estate Broker



Boating Dock on Lake Fairview



Covered Storage w/ Gate



Grade Level Roll-Up Door

CONTACT FOR MORE INFORMATION

Marie Shorey, CCIM
(407) 383-8142
marie@palkiper.com

Edgewater & Fairbanks Office with Warehouse

4340 Edgewater Dr, Orlando, FL 32804

OFFICE AREA FEATURES

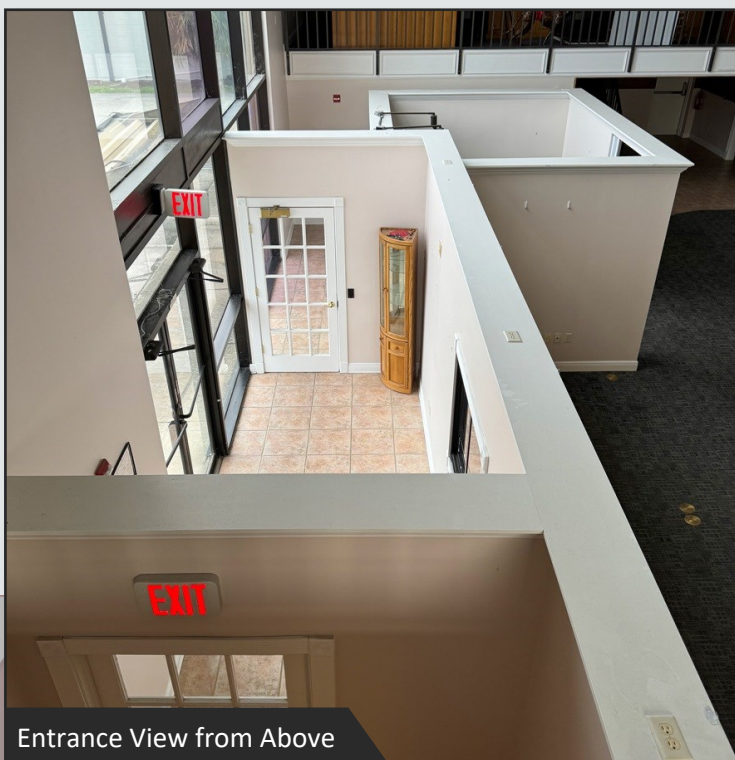
- **Spacious open area** with high ceilings and lots of natural light
- **Suspended track lights** at the center of the space for flexible lighting
- **Mezzanines on either side** can be used for extra storage space
- Large private office on the ground floor
- **Full kitchen** including a fridge, stove, sink, and dishwasher



Entrance View from Above



Open Area Facing Mezzanine 1



Entrance View from Above



Private Office on Ground Floor

CONTACT FOR MORE INFORMATION

Marie Shorey, CCIM

(407) 383-8142

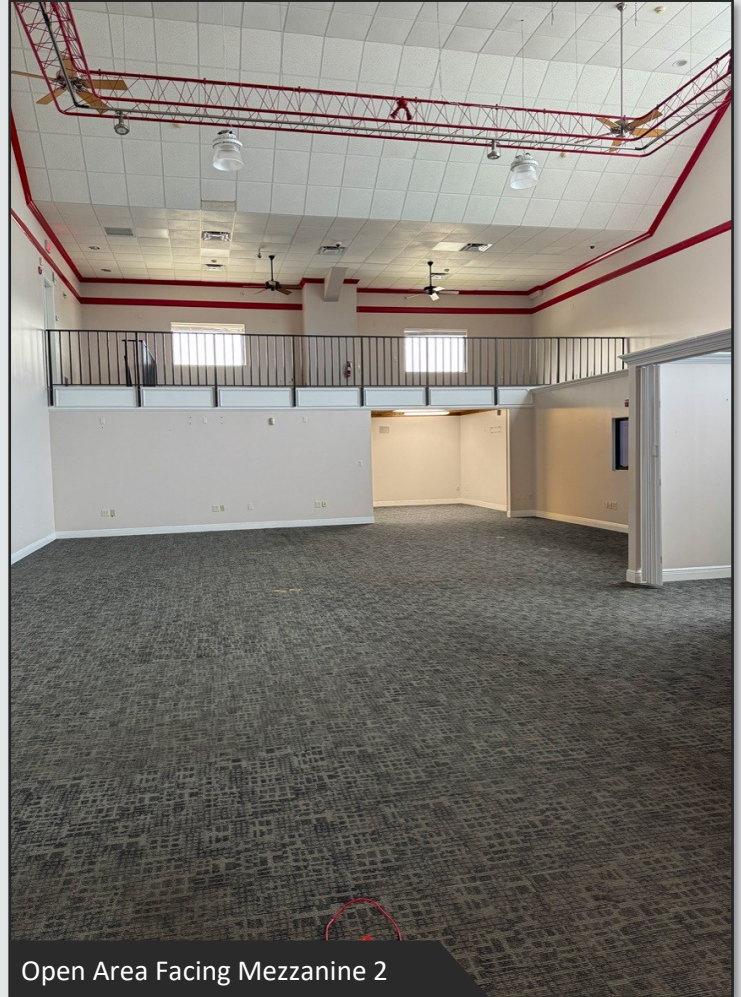
marie@palkiper.com

Edgewater & Fairbanks Office with Warehouse

4340 Edgewater Dr, Orlando, FL 32804



Full Kitchen



Open Area Facing Mezzanine 2



Stairs to Mezzanine 2



Space Above Mezzanine 2

CONTACT FOR MORE INFORMATION

Marie Shorey, CCIM
(407) 383-8142
marie@palkiper.com

Edgewater & Fairbanks Office with Warehouse

4340 Edgewater Dr, Orlando, FL 32804

WAREHOUSE FEATURES

- Features a **roll-up door** with workshop areas, mezzanines, and built-in shelving units on either side
- **Gated space under mezzanine** for additional secure storage and housing of power panels
- **Excellent lighting throughout**, with ample lighting fixtures and additional sunlight through light-admitting roof panels



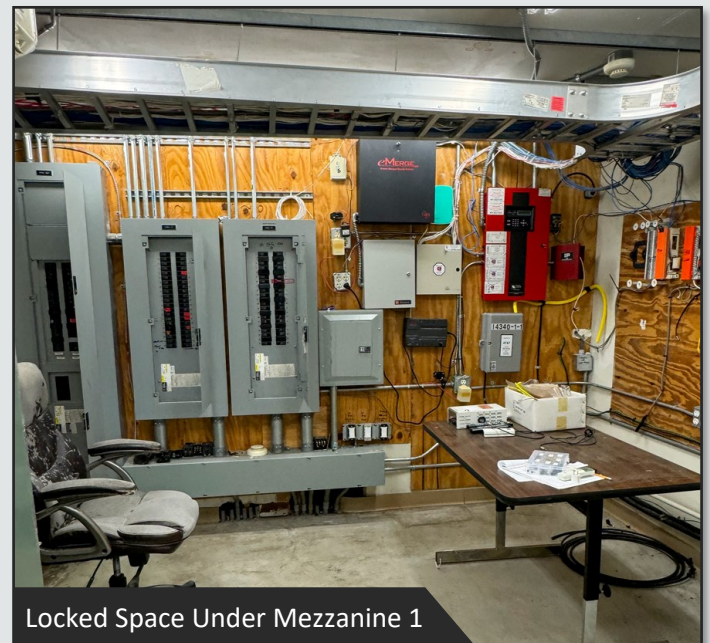
Mezzanine 1 & Roll-Up Door



Locked Space Under Mezzanine 1



Mezzanine 2 & Built-In Shelving



Locked Space Under Mezzanine 1

CONTACT FOR MORE INFORMATION

Marie Shorey, CCIM

(407) 383-8142

marie@palkiper.com

Edgewater & Fairbanks Office with Warehouse

4340 Edgewater Dr, Orlando, FL 32804

 **Palkiper**
Commercial Real Estate Services
Licensed Real Estate Broker



CONTACT FOR MORE INFORMATION

Marie Shorey, CCIM
(407) 383-8142
marie@palkiper.com

Palkiper has made every effort to obtain the information regarding this property from sources deemed reliable. However, we cannot warrant the complete accuracy thereof subject to errors, omissions, change of price, rental, or other conditions, prior sale, lease or financing or withdrawal without notice.
Licensed Real Estate Broker.

12/19/24 12:34