



### LISTING DATA

**Available SF:** 1,730 SF

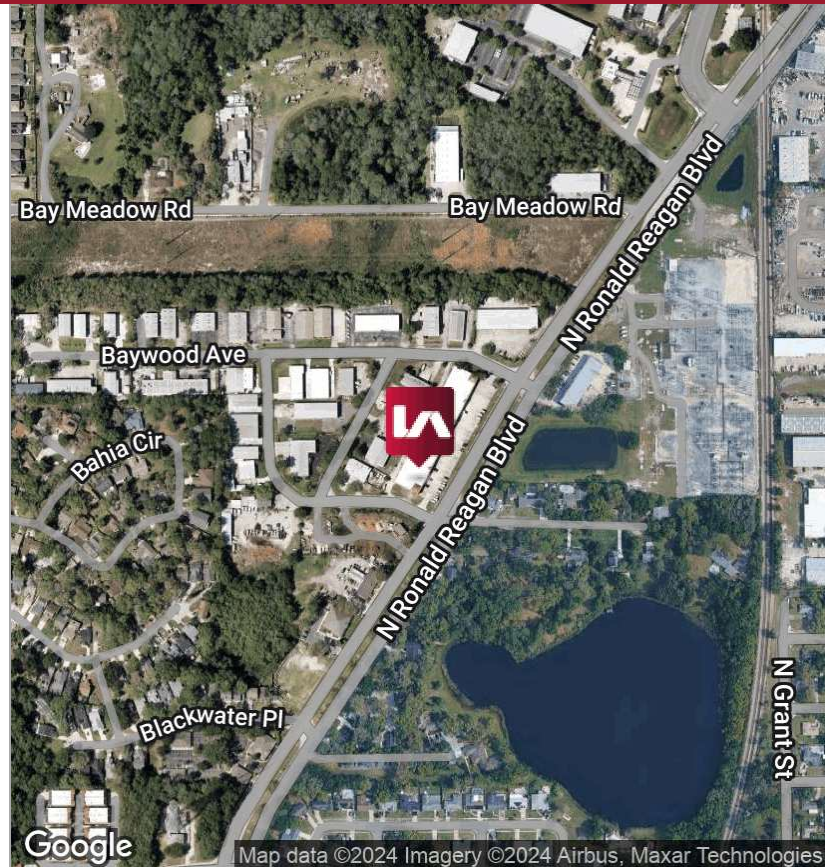
**Clear Height:** 14'

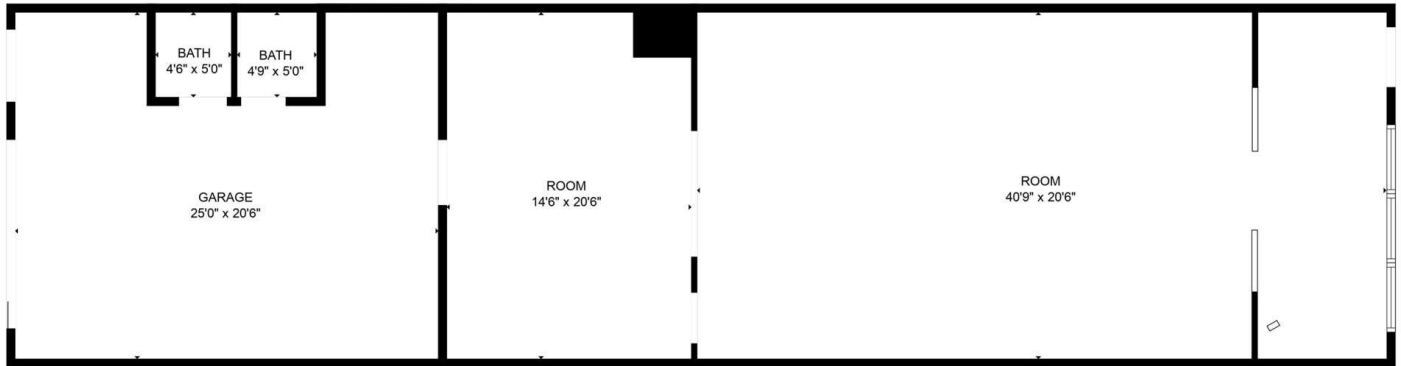
**Doors:** Grade Level

**Comments:** This property offers extensive frontage to N Ronald Reagan Blvd, optionality for signage on the monument in the center, and double access to either side of the building. Additionally, a brand new façade and interior buildout with a functional office/ showroom to warehouse layout with loading in the rear.

### ECONOMIC DATA

**Lease Rate:** \$12.00 - 14.50 SF/yr (NNN)





SUITE 1636

**LEASE INFORMATION**

Lease Type: NNN Lease Term: Negotiable  
 Total Space: 1,730 SF Lease Rate: \$12.00 - \$14.50 SF/yr

**AVAILABLE SPACES**

SUITE	TENANT	SIZE (SF)	LEASE TYPE	LEASE RATE	DESCRIPTION
Suite 1636	Available	1,730 SF	NNN	\$14.50 SF/yr	835± SF of brand-new office/showroom
Suite 1640	Available	1,730 SF	NNN	\$12.00 SF/yr	One (1) grade level door

1604 N RONALD REAGAN BLVD | LONGWOOD, FL 32750

FOR LEASE

