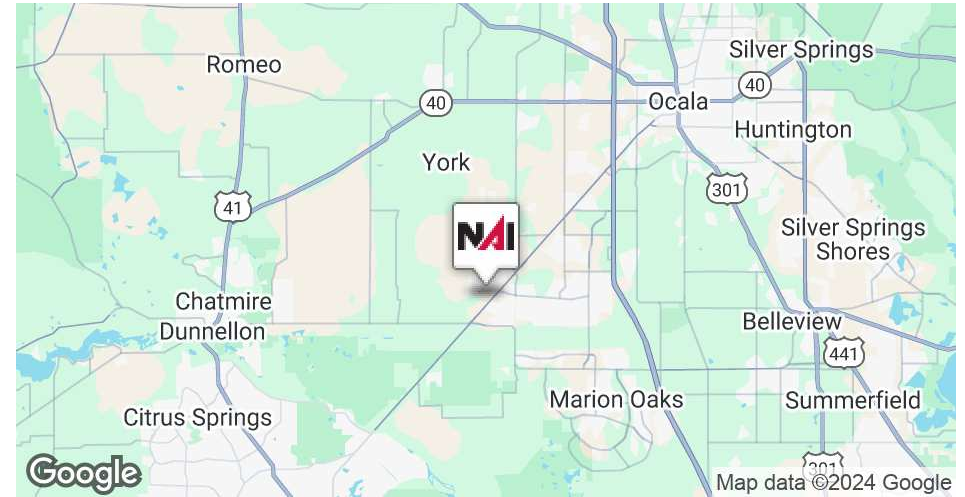


FOR LEASE
\$13.00 - \$18.00 SF/YR (NNN)



Property Highlights

- New BUILDOUT terms.
- Newest commercial destination in path of new development.
- Flexible sizes from 1,725sf to 11,400sf. B4 and B2 Zoning.
- Rent rates are for space currently configured - As Is.
- Select units intended for restaurants/cafes have Grease Trap interceptors.
- A Tenant Improvement (TI) allowance is negotiated based on Use, Terms, and Credit
- Tenant performs buildout and will be provided a free period during construction.
- End cap and in-line spaces available.
- Excellent frontage and traffic count, with pylon sign available.

Demographics	0.5 Miles	1 Mile	1.5 Miles
Total Households	743	2,779	5,157
Total Population	1,110	4,148	7,807
Average HH Income	\$41,630	\$45,340	\$48,838



Randy Buss, CCIM, SIOR

Managing Partner
352.482.0777 x7214
randy@naiheritage.com

2605 SW 33rd St. Suite 200
Ocala, FL 34471
352.482.0777
naiheritage.com



Property Description

NEW LEASE RATE STRUCTURE Welcome to Timber Ridge Commons, a newly constructed multi-building retail/office development located in the path of new development. With its prime location and high volume of daily traffic, your business will be highly visible and accessible with multiple points of ingress and egress. Units range from 1,725sf to 11,400sf. The Base Rent price is AS IS - as currently configured as a raw unfinished shell of a building with concrete floors, 2 hour fire demising wall between each unit and a room suitable to become a single bathroom in the rear. Units have a potable water line supply, an empty electrical line conduit from exterior meter raceway, an empty low voltage conduit, and a sewer line stub all located at the back wall of each suite. Certain units also have a Grease Trap with 1250 Gallon interceptor. Landlord provides a Tenant Improvement Allowance which is negotiated based on tenant's Use, Term and Credit. Tenant provided a free period to perform the buildout. Landlord will not amortized buildout into the rent or perform buildout. Pylon sign placement is also available. 4.15/1000sf parking is first come, first served. NNN Rent price is estimated at \$4.75/sf/yr.

This area is a fast-growing submarket in Ocala, poised for growth with the convergence of Crystal River and Dunnellon arterial roads, and with adjoining multifamily and neighborhood developments in close proximity. Hill Pointe Apartments, a 324 unit development, is currently under construction immediately behind the Center. Recent Ocala MSA stats: 409K population with 269 people moving in weekly, #4 fastest growing % population in US.

Location Description

Located on the north side Hwy 200 approximately 1/2 mile east of the Walmart Supercenter at intersection of SW Hwy 200 and SW Hwy 484. This area is a fast-growing submarket in Ocala, and poised for growth with the convergence of Crystal River and Dunnellon arterial roads and with adjoining multifamily and neighborhood developments in close proximity, offering increased foot traffic and potential for your business.

Randy Buss, CCIM, SIOR
Managing Partner
352.482.0777 x7214
randy@naiheritage.com

2605 SW 33rd St. Suite 200
Ocala, FL 34471
352.482.0777
naiheritage.com

Timber Ridge Commons Building Number and Address

_____ SW Hwy 200, Ocala, FL 34481



Randy Buss, CCIM, SIOR
Managing Partner
352.482.0777 x7214
randy@naiheritage.com

2605 SW 33rd St. Suite 200
Ocala, FL 34471
352.482.0777
naiheritage.com



Lease Information

Lease Type:	NNN	Lease Term:	36 months
Total Space:	1,725 - 11,400 SF	Lease Rate:	\$13.00 - \$18.00 SF/yr

Available Spaces

Suite	Tenant	Size	Type	Rate	Description
■ 9283: Suite 1	Available	2,250 - 3,975 SF	NNN	\$13.00 SF/yr	Endcap suite with 1250 gallon Grease Trap Interceptor. Demised open unfinished shell with negotiable TI Allowance. \$13.00/sf base rent + \$4.75/sf NNN rent = \$3,328.13/mo. plus Sales Tax.
■ 9283: Suite 2	Available	1,725 - 3,975 SF	NNN	\$13.00 SF/yr	An in-line demised open unfinished shell with negotiable TI Allowance. \$13.00/sf base rent + \$4.75/sf NNN rent = \$2,551.56/mo. plus Sales Tax.
■ 9283: Suite 3	Flag Up Inc dba Golf Cart	1,725 SF		-	-

Randy Buss, CCIM, SIOR

Managing Partner
352.482.0777 x7214
randy@naiheritage.com

2605 SW 33rd St. Suite 200
Ocala, FL 34471
352.482.0777
naiheritage.com



Commercial Real Estate Services, Worldwide.

Timber Ridge Commons

9121-9283 SW HWY 200, Ocala, FL 34481

Suite	Tenant	Size	Type	Rate	Description
9283: Suite 4	Flag Up Inc dba Golf Cart	1,725 SF		-	-
9283: Suite 5	Available	1,725 - 3,975 SF	NNN	\$13.00 SF/yr	An in-line demised open unfinished shell with negotiable TI Allowance. \$13.00/sf base rent + \$4.75/sf NNN rent = \$2,551.56/mo. plus Sales Tax.
9283: Suite 6	Available	2,250 - 3,975 SF	NNN	\$13.00 SF/yr	Endcap suite. Demised open unfinished shell with negotiable TI Allowance. \$13.00/sf base rent + \$4.75/sf NNN rent = \$3,328.13/mo. plus Sales Tax.
9267: Suite 1	Available	1,875 - 7,500 SF	NNN	\$13.00 SF/yr	Endcap suite. Demised open unfinished shell with negotiable TI Allowance. \$13.00/sf base rent + \$4.75/sf NNN rent = \$2,773.44/mo. plus Sales Tax.
9267: Suite 2	Available	1,875 - 7,500 SF	NNN	\$13.00 SF/yr	An in-line demised open unfinished shell with negotiable TI Allowance. \$13.00/sf base rent + \$4.75/sf NNN rent = \$2,773.34/mo. plus Sales Tax.
9267: Suite 3	Available	1,875 - 7,500 SF	NNN	\$13.00 SF/yr	An in-line demised open unfinished shell with negotiable TI Allowance. \$13.00/sf base rent + \$4.75/sf NNN rent = \$2,773.34/mo. plus Sales Tax.
9267: Suite 4	Available	1,875 - 7,500 SF	NNN	\$13.00 SF/yr	Endcap suite with 1250 gallon Grease Trap Interceptor. Demised open unfinished shell with negotiable TI Allowance. \$13.00/sf base rent + \$4.75/sf NNN rent = \$2,773.34/mo. plus Sales Tax.
9181: Suite 1	Available	2,250 - 11,400 SF	NNN	\$18.00 SF/yr	Endcap suite with 1250 gallon Grease Trap Interceptor. Demised open unfinished shell with negotiable TI Allowance. \$18.00/sf base rent + \$4.75/sf NNN rent = \$4,265.63/mo. plus Sales Tax.
9181: Suite 2	Available	1,725 - 11,400 SF	NNN	\$18.00 SF/yr	An in-line demised open unfinished shell with negotiable TI Allowance. \$18.00/sf base rent + \$4.75/sf NNN rent = \$3,270.31/mo. plus Sales Tax.
9181: Suite 3	Available	1,725 - 11,400 SF	NNN	\$18.00 SF/yr	An in-line demised open unfinished shell with negotiable TI Allowance. \$18.00/sf base rent + \$4.75/sf NNN rent = \$3,270.31/mo. plus Sales Tax.
9181: Suite 4	Available	1,725 - 11,400 SF	NNN	\$18.00 SF/yr	An in-line demised open unfinished shell with negotiable TI Allowance. \$18.00/sf base rent + \$4.75/sf NNN rent = \$3,270.31/mo. plus Sales Tax.
9181: Suite 5	Available	1,725 - 11,400 SF	NNN	\$18.00 SF/yr	An in-line demised open unfinished shell with negotiable TI Allowance. \$18.00/sf base rent + \$4.75/sf NNN rent = \$3,270.31/mo. plus Sales Tax.
9181: Suite 6	Available	2,250 - 11,400 SF	NNN	\$18.00 SF/yr	Endcap suite. Demised open unfinished shell with negotiable TI Allowance. \$18.00/sf base rent + \$4.75/sf NNN rent = \$4,265.63/mo. plus Sales Tax.

Randy Buss, CCIM, SIOR
 Managing Partner
 352.482.0777 x7214
 randy@naiheritage.com

2605 SW 33rd St. Suite 200
 Ocala, FL 34471
 352.482.0777
 naiheritage.com

We obtained the information above from sources we believe to be reliable. However, we have not verified its accuracy and make no guarantee, warranty or representation about it. It is submitted subject to the possibility of errors, omissions, change of price, rental or other conditions, prior sale, lease or financing, or withdrawal without notice. We include projections, opinions, assumptions or estimates for example only, and they may not represent current or future performance of the property. You and your tax and legal advisors should conduct your own investigation of the property and transaction.



Commercial Real Estate Services, Worldwide.

Timber Ridge Commons

9121-9283 SW HWY 200, Ocala, FL 34481

Suite	Tenant	Size	Type	Rate	Description
■ 9165: Suite 1	Available	2,250 - 9,150 SF	NNN	\$18.00 SF/yr	Endcap suite. Demised open unfinished shell with negotiable TI Allowance. \$18.00/sf base rent + \$4.75/sf NNN rent = \$4,265.63/mo. plus Sales Tax.
■ 9165: Suite 2	Available	1,725 - 9,150 SF	NNN	\$18.00 SF/yr	An in-line demised open unfinished shell with negotiable TI Allowance. \$18.00/sf base rent + \$4.75/sf NNN rent = \$3,270.31/mo. plus Sales Tax.
■ 9165: Suite 3	Available	1,725 - 9,150 SF	NNN	\$18.00 SF/yr	An in-line demised open unfinished shell with negotiable TI Allowance. \$18.00/sf base rent + \$4.75/sf NNN rent = \$3,270.31/mo. plus Sales Tax.
■ 9165: Suite 4	Available	1,725 - 9,150 SF	NNN	\$18.00 SF/yr	An in-line demised open unfinished shell with negotiable TI Allowance. \$18.00/sf base rent + \$4.75/sf NNN rent = \$3,270.31/mo. plus Sales Tax.
■ 9165: Suite 5	Available	1,725 - 9,150 SF	NNN	\$18.00 SF/yr	An in-line demised open unfinished shell with negotiable TI Allowance. \$18.00/sf base rent + \$4.75/sf NNN rent = \$3,270.31/mo. plus Sales Tax.
■ 9165: Suite 6	Premier Realty of Ocala, Inc	2,250 SF	NNN	-	-
■ 9121: Suite 1	Recharge Clinic, LLC	1,875 SF	NNN	-	-
■ 9121: Suite 2	Available	1,875 SF	NNN	\$18.00 SF/yr	An in-line demised open unfinished shell with negotiable TI Allowance. \$18.00/sf base rent + \$4.75/sf NNN rent = \$3,554.69/mo. plus Sales Tax.
■ 9121: Suite 3	Shreeji Krupa3 LLC dba Smoke Shop	1,875 SF	NNN	-	-
■ 9121: Suite 4	Ocala Ice 2, LLC dba Jeremiah's Italian Ice	1,875 SF		-	-

Randy Buss, CCIM, SIOR
 Managing Partner
 352.482.0777 x7214
 randy@naiheritage.com

2605 SW 33rd St. Suite 200
 Ocala, FL 34471
 352.482.0777
 naiheritage.com



Legend

Lease Information

Lease Type:	NNN	Lease Term:	36 months
Total Space:	1,725 - 11,400 SF	Lease Rate:	\$13.00 - \$18.00 SF/yr

Available Spaces

Suite	Tenant	Size	Type	Rate	Description
-------	--------	------	------	------	-------------

Randy Buss, CCIM, SIOR

Managing Partner
352.482.0777 x7214
randy@naiheritage.com

2605 SW 33rd St. Suite 200
Ocala, FL 34471
352.482.0777
naiheritage.com



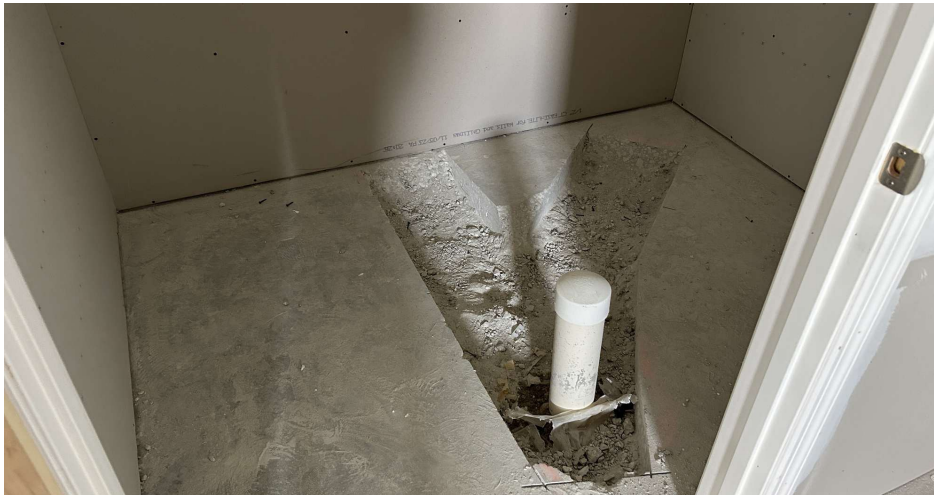
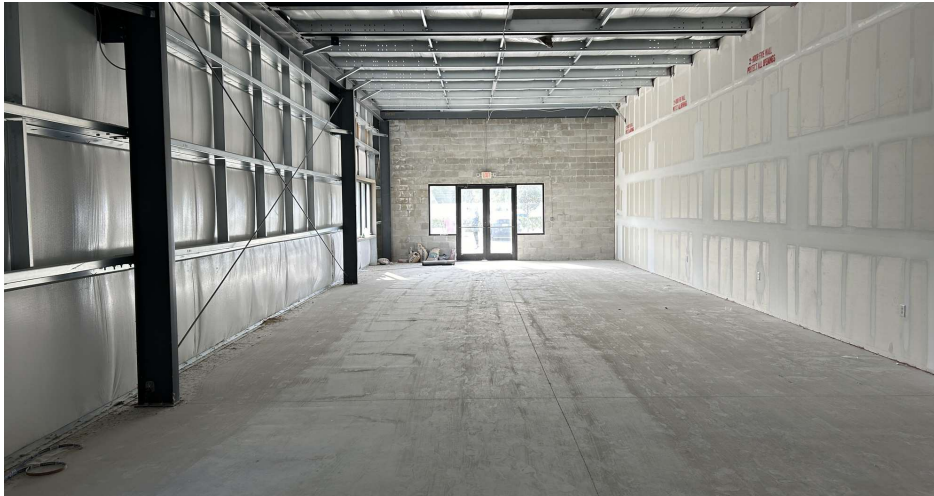
Randy Buss, CCIM, SIOR
 Managing Partner
 352.482.0777 x7214
 randy@naiheritage.com

2605 SW 33rd St. Suite 200
 Ocala, FL 34471
 352.482.0777
naiheritage.com



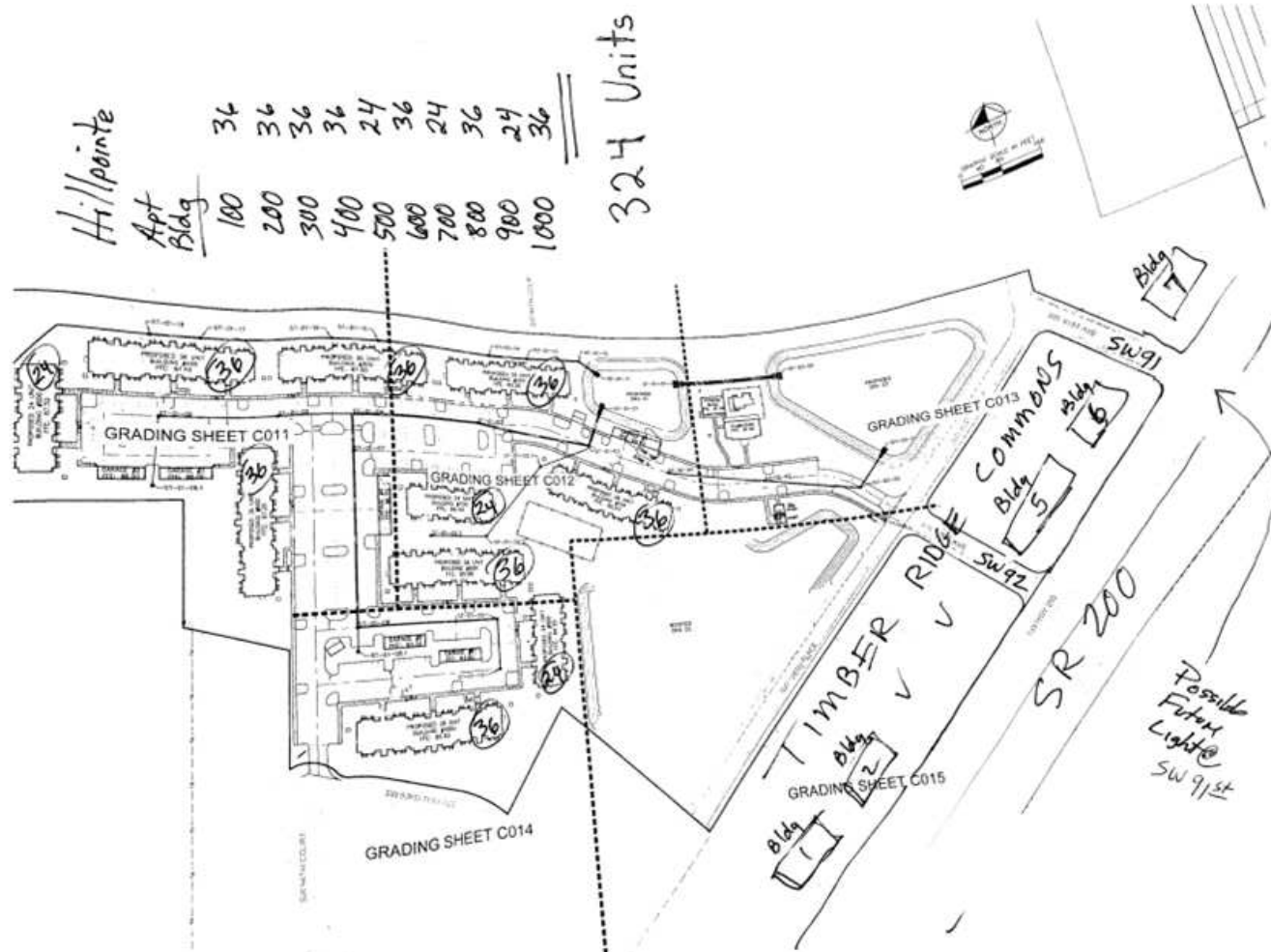
Randy Buss, CCIM, SIOR
Managing Partner
352.482.0777 x7214
randy@naiheritage.com

2605 SW 33rd St. Suite 200
Ocala, FL 34471
352.482.0777
naiheritage.com



Randy Buss, CCIM, SIOR
Managing Partner
352.482.0777 x7214
randy@naiheritage.com

2605 SW 33rd St. Suite 200
Ocala, FL 34471
352.482.0777
naiheritage.com



Randy Buss, CCIM, SIOR
 Managing Partner
 352.482.0777 x7214
 randy@naiheritage.com

2605 SW 33rd St. Suite 200
 Ocala, FL 34471
 352.482.0777
naiheritage.com



Randy Buss, CCIM, SIOR

Managing Partner

randy@naiheritage.com

Direct: 352.482.0777 x7214 | Cell: 352.817.3860

FL #BK3105657

Professional Background

Scope of Service Experience

Landlord / Seller Representation Tenant / Buyer Representation Investment Services Commercial Property Management via alliance provider Heritage Management Corp Construction Management Receivership & Special Asset Disposition Lease Renegotiation Valuations via alliance provider

Background & Experience

Procter & Gamble Products Company 1991 - 2004 in Georgia, Manchester England, and Pennsylvania: Engineering and Manufacturing Management including capacity increases, domestic & international plant start-up leadership and expansions, management of site construction contractors, and converting/packaging technology and personnel. Plants ranged in size from 350 to 3,000ppl and ran 24hrs/day 7 days per week. Heritage Management Corp 2004 - Present: The leading and largest commercial property management company in Ocala, FL and surrounding counties since 1979. During this time I have managed a portfolio of commercial income producing properties of all types including office, industrial and retail. Conducted all lease administration and negotiations. Over the years increased company market share by forming a department for non-managed Seller/Landlord Lease & Sale Representation. This evolved into Tenant/Buyer Representation. As the Client base grew more diverse and the market changed, it became necessary to keep the management capabilities within Heritage Management Corp. and create a separate entity with new tools, reach and capability named NAI Heritage. NAI Heritage 1/1/11 - Present. NAI Heritage provides brokerage services to the public and is the alliance brokerage service provider for properties managed by Heritage Management Corp.

NAI Heritage
2605 SW 33rd St. Suite 200
Ocala, FL 34471
352.482.0777

Randy Buss, CCIM, SIOR

Managing Partner

352.482.0777 x7214

randy@naiheritage.com

2605 SW 33rd St. Suite 200

Ocala, FL 34471

352.482.0777

naiheritage.com