

FOR LEASE

Owned and Operated by



33rd Street Industrial Center Bldg 8

4210 LB McLeod Road, Orlando, FL 32811

3,640 SF | SUITE 106



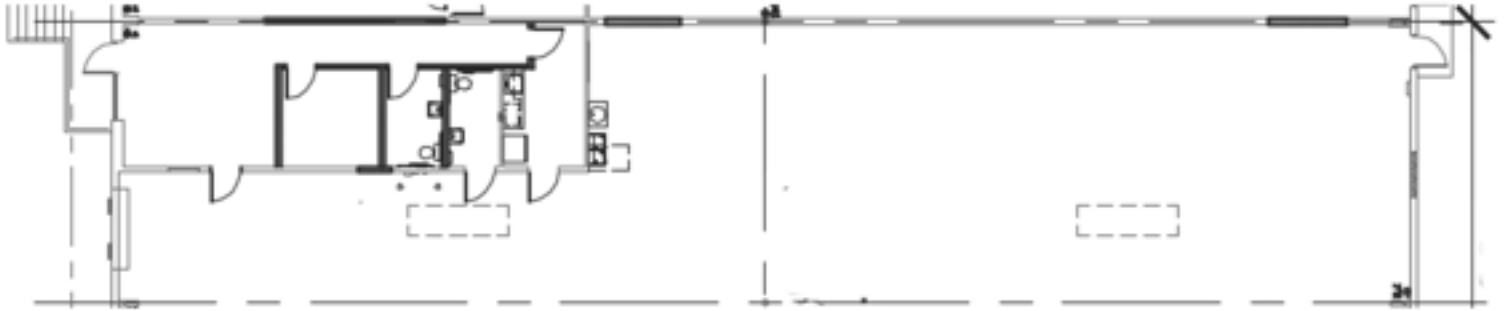
**LEASING INFO
& CONTACT**

Derek Riggleman SIOR

321.281.8507 / driggleman@lee-associates.com



This is not an offer or acceptance of an offer to lease space. A lease will only be offered or made in a written agreement signed by landlord. No representation or warranty of any kind is made by landlord unless set forth in a written definitive lease executed by the landlord.

**BUILDING DATA**

BuildingSize: 65,000 SF

Ceiling Height: 22'

Column Spacing: 28' W x 65' D

Truck Court: 100'

Building Depth: 130'

LISTING DATA

Available Size: Suite 106 | 3,640 SF

Office Size: 680 SF

Doors: One (1) Dock High

Lease Rate: \$16.95/SF NNN

Op Ex: \$2.89/SF

