



250 CARMALITA ST | PUNTA GORDA, FL 33950

15,028± SF WAREHOUSE AVAILABLE FOR SUBLEASE

FOR SUBLEASE

CONTACT

Justin Ankney, ccim
239-933-5594
justin@mayhughcommercial.com

Chase Mayhugh, SIOR, CCIM
239-278-4945
chase@mayhughcommercial.com

Centrally located former ABC Supply location available for sublease.

Available NOW - This warehouse is centrally located with easy access to US-41 or I-75. The property has three entrances, while the storage yard has two access points. Well appointed office area contains showroom, conference room, two private offices, break room, storage room, IT area, and two restrooms. Warehouse has four overhead doors, and automatic LED lighting. Some business exclusions apply, call for more details. **Call us today to arrange a tour.**

PROPERTY DETAILS

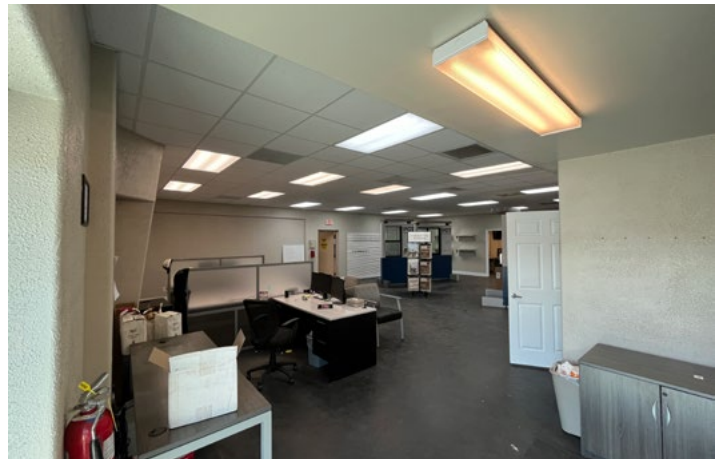
LEASE RATE	\$16.25 p/s/f NNN	
ZONING	SP - Industrial	
PROPERTY SF	Office	2,520± SF
	Warehouse	12,508± SF
	Total	15,028± SF
PARCEL SIZE	2.15± AC	
YEAR BUILT	1974	
CLEAR HEIGHT	16'-18'	
OH DOORS	(2) 16' x 14' ; (2) 14' x 14'	



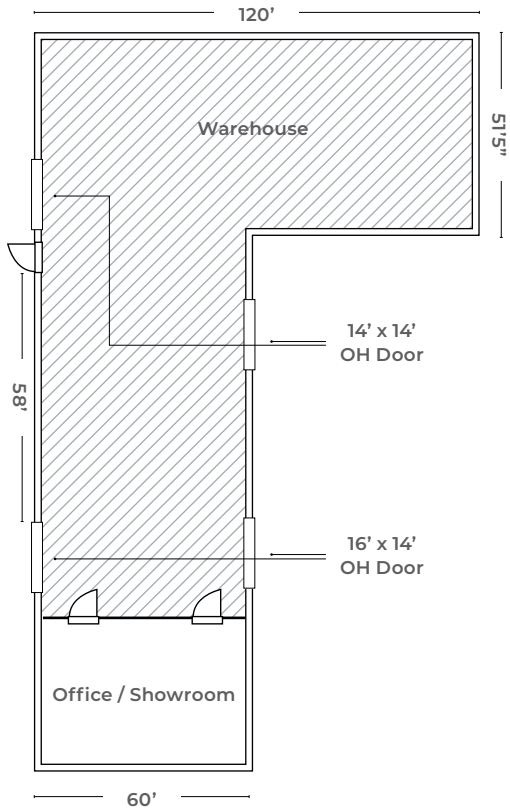
MAYHUGH
COMMERCIAL ADVISORS

13099 S. Cleveland Ave. Suite 410
Fort Myers, FL 33907

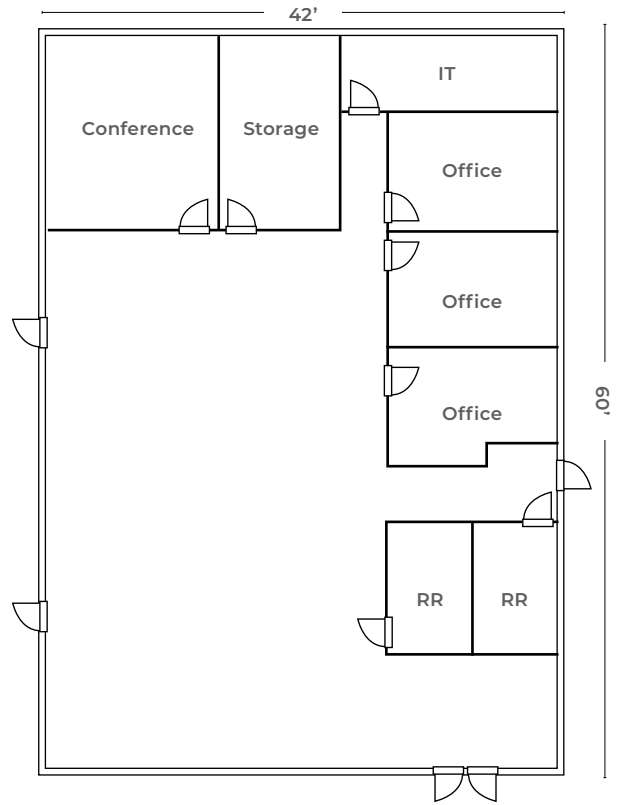
MAYHUGHCOMMERCIAL.COM



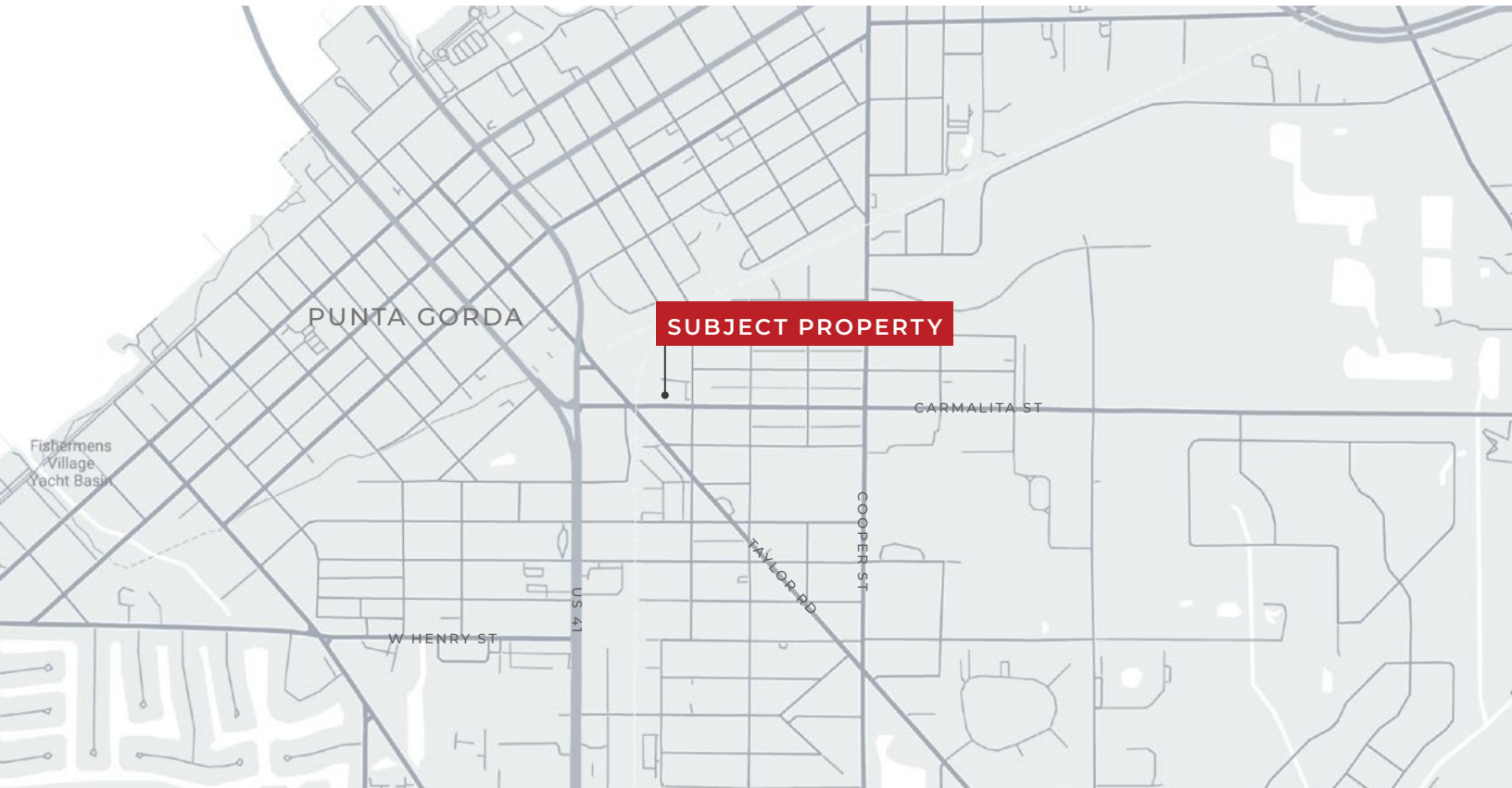
BUILDING FLOORPLAN



OFFICE LAYOUT



This floorplan is for illustrative purposes only and is not drawn to scale.



This marketing brochure serves as a reference for informational purposes only and does not constitute an offer for sale or lease, nor does it serve as a solicitation for an offer to purchase or lease. While the information contained herein is believed to be reliable, its accuracy, completeness, or reliability cannot be guaranteed. Prospective buyers or lessees are encouraged to conduct their own investigations and due diligence to verify the information provided. All descriptions, dimensions, conditions, permissions for use, and other details are offered in good faith but are subject to verification. No express or implied warranty or representation is made regarding the accuracy of the information herein. The content is subject to errors, omissions, price changes, withdrawal without notice, and any special listing conditions imposed by our principals.