

Commodity Circle

For Lease

# South Park Business Center

Flex / Office / Warehouse Space | \$15.00 / SF NNN



## 8600 Commodity Circle

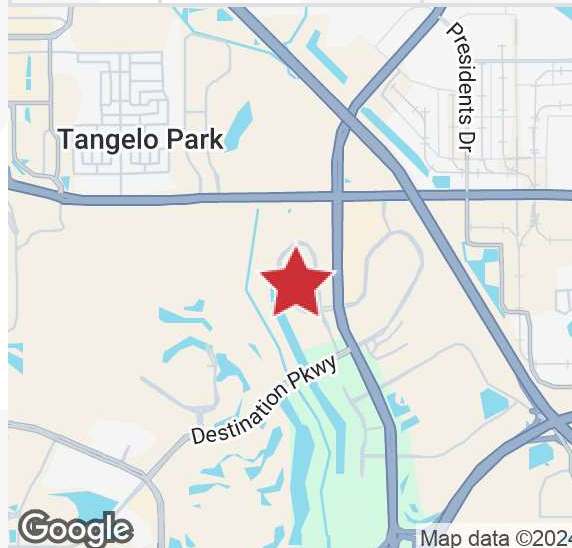
Orlando, Florida 32819

### Property Highlights

- South Park Business Center is over 150,000± SF of commercial flex/office/warehouse units
- Solid, tilt-wall concrete construction; each unit is grade-level and has a large roll up door
- Group II (Ordinary Hazard) fire sprinkler system
- Clear height: 18' (less sprinklers)
- Electrical service: 150 amp, 120/208 volt, 3-phase
- Glass storefront and doors; Exterior site lighting; Parking: 2.4/1,000 SF
- Zoning: I-2 / I-3, Light Industrial, Orange County
- Just southwest of John Young Parkway and Sand Lake Road
- Offers easy access to SR 528 (Beachline), I-4, Florida's Turnpike, SR 417 (GreeneWay), SR 408 (East-West), US Hwy 17-92, International Drive and Orlando International Airport
- Close to Orange County Convention Center, Universal Studios, Sea World, Florida Mall, Mall at Millenia and Downtown Orlando

### AVAILABLE SPACES

Space	Lease Rate	Size (SF)
Unit 118	\$15.00/SF NNN	2,085
Unit 130	\$15.00 SF/NNN	1,830

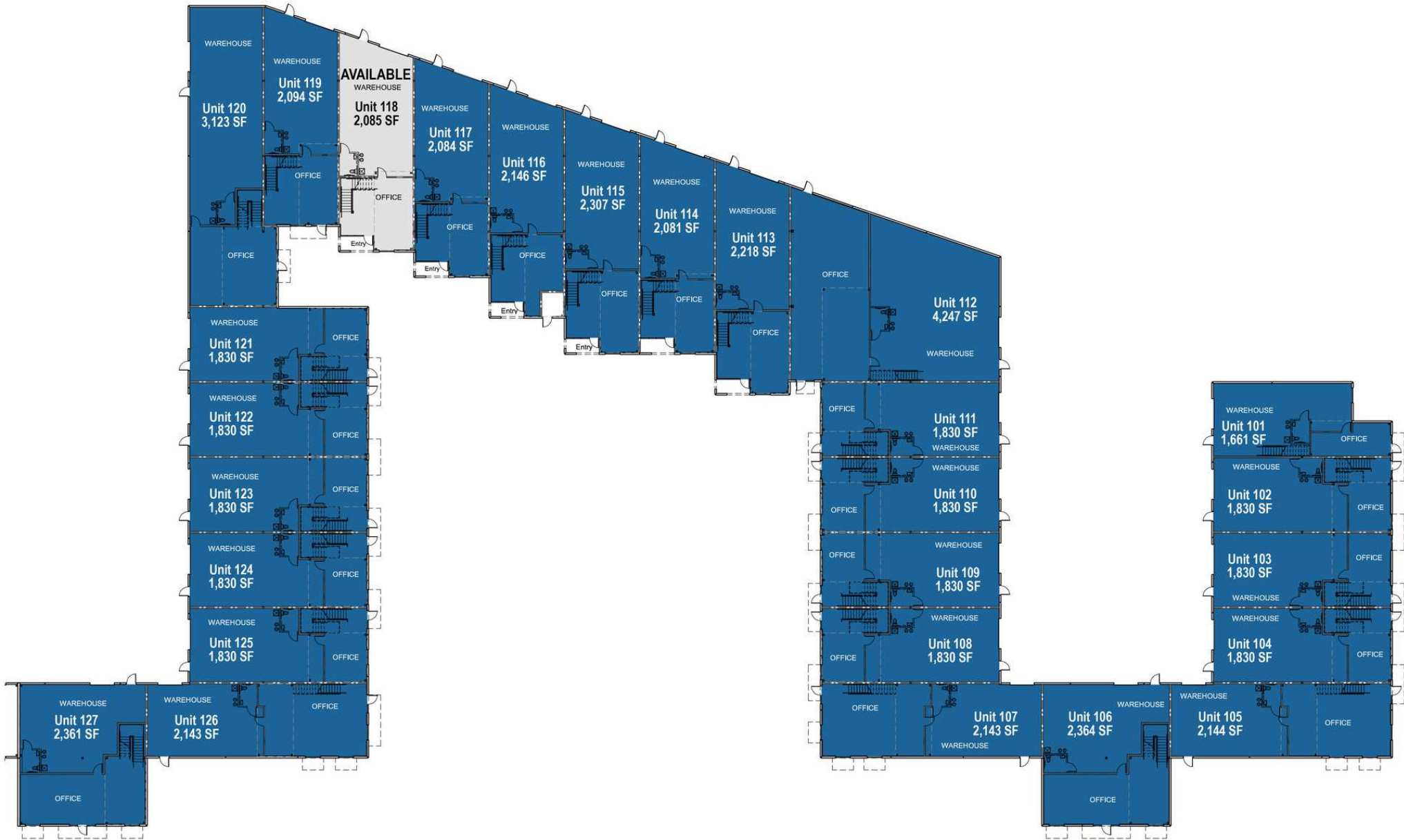


For more information

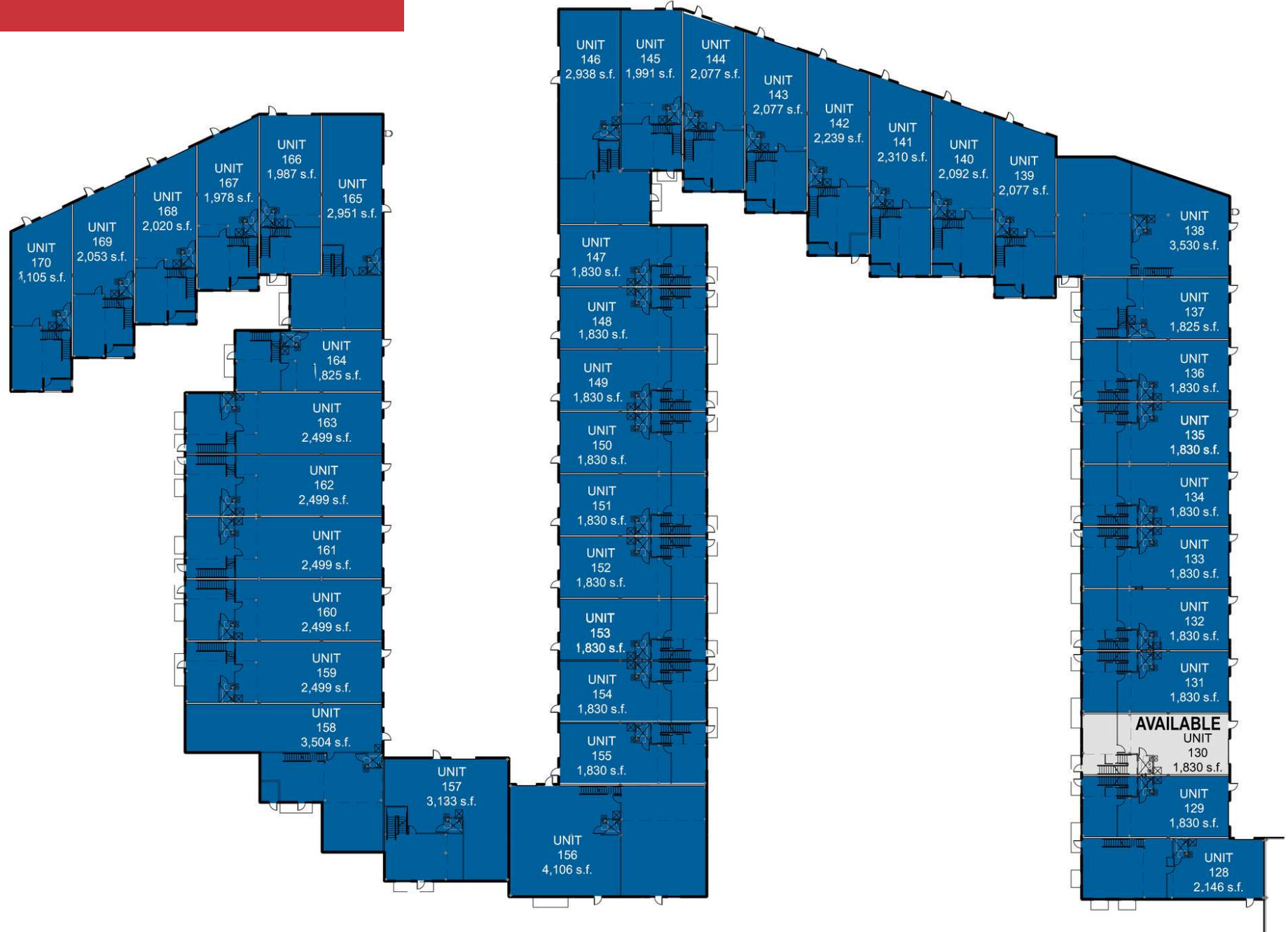
**Tom R. Kelley II, CCIM**

O: 407 949 0715  
tkelley@realvest.com

# South Park - Phase I



# South Park - Phase II & III



# Location Maps

