

## 6200 Metrowest Blvd, Ste 103E, Orlando, FL 32835



Presented by

**ARIEL VARGAS** | Team Leader/Broker | ABR

Florida Real Estate License: 3262518



Work: (407) 558-5161

Main: [ariel@mrlisting.com](mailto:ariel@mrlisting.com)

Agent: [www.mrlisting.com](http://www.mrlisting.com)

**eXp Realty**  
6200 Metrowest Blvd, Suite 203  
Orlando, FL 32835

## 6200 Metrowest Blvd, Ste 103E, Orlando, FL 32835

● Active

\* New, Active: 12/9/2024

### Lease Price

**\$21,000**

Active Date: 12/9/2024

Listing ID: O6263069

### Price Per Sq Ft

**\$13**

Property Facts	Public Facts	Listing Facts
Property Type	-	Office
Property Subtype	-	Office
Number of Buildings	-	1
Building Area (sq ft)	-	1,627
Lot Size	-	1,627 sq ft
Year Built	-	2005
Roofing	-	Membrane
Heating	-	Central
Cooling	-	Central Air
Foundation	-	Slab
Construction	-	Block, Concrete, Stucco

*This report contains data and information that is publicly available and/or licensed from third parties and is provided to you on an "as is" and "as available" basis. The information is not verified or guaranteed. Neither this report nor the estimated value of a property is an appraisal of the property. Any valuation shown in this report has been generated by use of proprietary computer software that assembles publicly available property records and certain proprietary data to arrive at an approximate estimate of a property's value. Some portions of this report may have been provided by an RPR user; RPR is not responsible for any content provided by its users. RPR and its information providers shall not be liable for any claim or loss resulting from the content of, or errors or omissions in, information contained in this report.*

## Extended Property Facts

### Structure Details

<b>Roofing</b>	Membrane
<b>Construction Features</b>	Block, Concrete, Stucco
<b>Foundation Features</b>	Slab
<b>Parking Features</b>	30+, Common, Lighted

### Property Features

<b>Potential Use</b>	□
<b>Construction Features</b>	Block, Concrete, Stucco
<b>Number of Buildings</b>	1
<b>Community Features</b>	Curbs
<b>Foundation Features</b>	Slab
<b>Roof Features</b>	Membrane
<b>Road</b>	Asphalt
<b>Parking</b>	30+, Common, Lighted
<b>Sewer</b>	Public Sewer
<b>Lot Size Range</b>	0 to less than 1/4
<b>Appliance</b>	Refrigerator, Microwave
<b>Cooling</b>	Central Air
<b>Floor</b>	Tile, Engineered Wood Floors
<b>Heating</b>	Central
<b>Utilities</b>	Public
<b>Building Sqft</b>	1,627 sq ft

### Location Details

<b>Directions to Property</b>	Metro Park office sits directly on Metrowest Blvd. Head on Hiawassee. Make Right on Metrowest Boulevard. Property is approximately .5 miles on the Right.
<b>Zoning</b>	AC-2
<b>Community Features</b>	Curbs
<b>Potential Use</b>	□

## Listing Facts and Details

### Listing Details

**Listing ID:** O6263069  
**Listing Source:** Stellar MLS  
**Original List Price:** \$21,000  
**Original List Date:** 12/9/2024  
**Listing Agreement Type:** 2N  
**Possession:** []  
**Owner Paid Features:** Internet, Sewer, Ground Cover, Trash Collection, Electricity, Water

**Tenant Paid Features:** Electricity, Water, Trash Collection, Sewer  
**Potential Use:** []  
**Lease Option:** No  
**Lease Price:** \$21,000  
**Utilities:** Public  
**Community Features:** Curbs

### Details:

Lease the perfect luxurious office in an Outstanding Location: minutes from Downtown, Universal Studios and Convention Center, as well as I-4, East-West Expressway/408, Florida Turnpike. Easy access to Dr. Phillips, Windermere, Winter Garden, Isleworth and Bay Hill. You get your own office space, which features an inviting shareable reception area, kitchen and its own private restroom, this is the perfect solution for your business needs. Office space is perfectly suited for any office related business, such as Home Insurance Business, Advertising Agency, Law Firm, Consulting Firm, Accounting Firm, etc. Surrounded by fine dining restaurants, stores and shopping. This office space is located near the intersection of Metrowest Blvd and Metro Park Circle with a traffic count of approximately 28,000 cars per day. The building can be seen from Metrowest Blvd, has a nearby bus stop, and connects S Hiawassee Rd and S Kirkman Rd making it easily accessible. Less than 3 miles from the Florida Turnpike, I-4, and the 408. Near Universal, Millenia, and Valencia.

### Business Details

**Owner Paid Features:** Internet, Sewer, Ground Cover, Trash Collection, Electricity, Water  
**Tenant Paid Features:** Electricity, Water, Trash Collection, Sewer

### Price Change History

Change Date	Description	New List Price	% Change
12/9/2024	Active	-	-

## Public Facts

### Legal Description

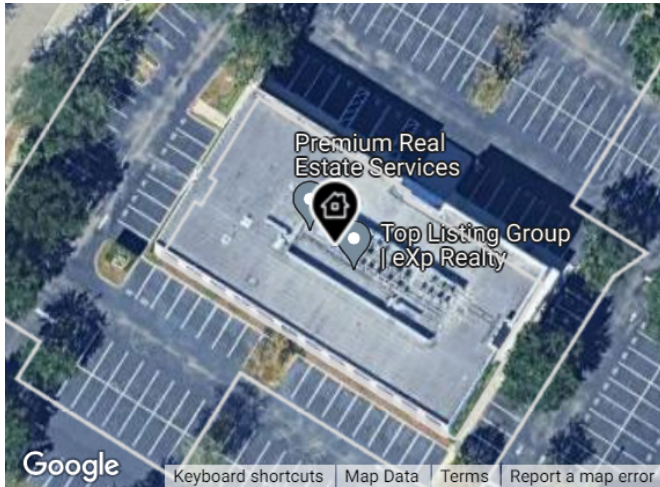
**Current Use** Office




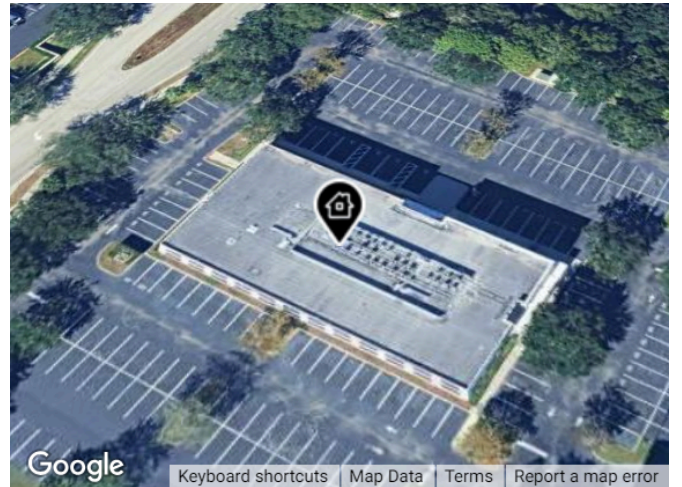
# Maps



Legend:  Subject Property



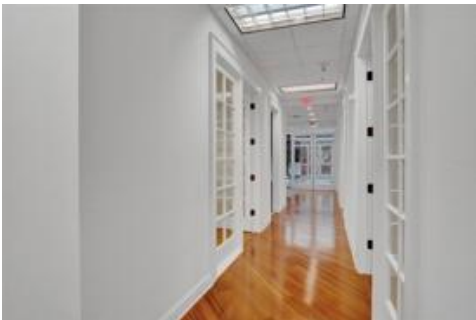
Legend:  Subject Property



Legend:  Subject Property

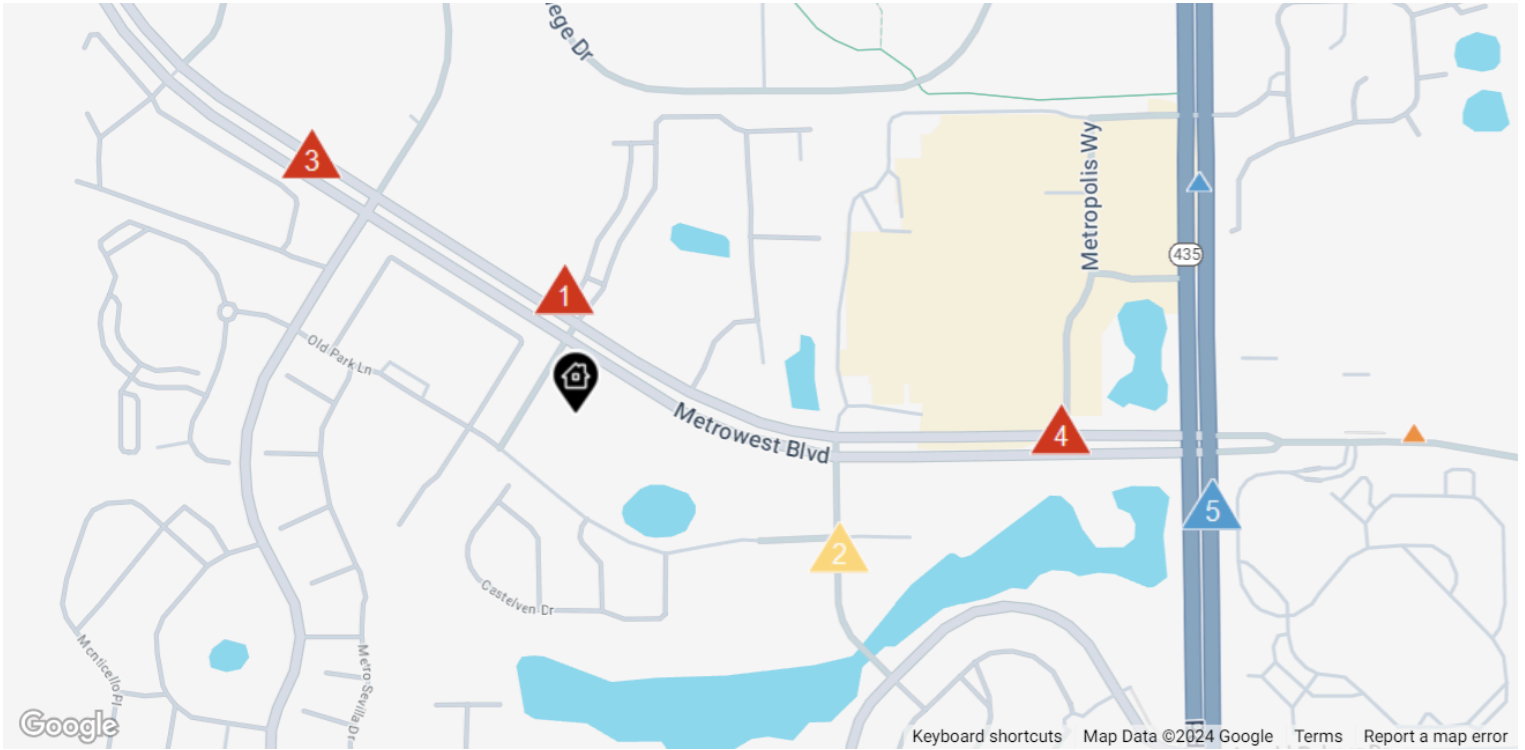


# Property Photos





# Traffic Counts



Daily Traffic Counts:   
▲ Up 6,000 / day   
▲ 6,001 – 15,000   
▲ 15,001 – 30,000   
▲ 30,001 – 50,000   
▲ 50,001 – 100,000   
▲ Over 100,000 / day

**1**  
**22,612**

2023 Est. daily traffic counts

Street: **Metrowest Boulevard**  
 Cross: **Metro PkCir**  
 Cross Dir: **SE**  
 Dist: **0.02 miles**

Historical counts

Year	Count	Type
2022	25,500	AADT
2021	16,900	AADT
2020	17,300	AADT
2019	28,000	AADT
2018	28,000	AADT

**2**  
**5,191**

2023 Est. daily traffic counts

Street: **Wilshire Drive**  
 Cross: **Old PkLn**  
 Cross Dir: **N**  
 Dist: **0.03 miles**

Historical counts

Year	Count	Type
2022	4,500	AADT
2021	4,600	AADT
2020	4,600	AADT
2019	7,100	AADT
2018	7,000	AADT

**3**  
**26,360**

2023 Est. daily traffic counts

Street: **Metrowest Blvd**  
 Cross: **Metrocenter Blvd**  
 Cross Dir: **SE**  
 Dist: **0.05 miles**

Historical counts

Year	Count	Type
2012	25,886	AADT
2011	26,238	AADT
2010	27,657	AADT
2009	25,249	AADT

**4**  
**18,864**

2023 Est. daily traffic counts

Street: **Metrowest Blvd**  
 Cross: **S Kirkman Rd**  
 Cross Dir: **E**  
 Dist: **0.11 miles**

Historical counts

Year	Count	Type
2012	18,800	AADT
1998	12,362	AADT
1992	13,612	ADT

**5**  
**55,644**

2023 Est. daily traffic counts

Street: **S Kirkman Rd**  
 Cross: **Metrowest Blvd**  
 Cross Dir: **N**  
 Dist: **0.06 miles**

Historical counts

Year	Count	Type
2019	58,000	AADT
2012	52,500	AADT
2007	51,000	AADT
2000	49,893	ADT
1999	54,698	ADT

NOTE: Daily Traffic Counts are a mixture of actual and Estimates (\*)



## About RPR (Realtors Property Resource)

- Realtors Property Resource® is a wholly owned subsidiary of the National Association REALTORS®.
- RPR offers comprehensive data – including a nationwide database of 164 million properties – as well as powerful analytics and dynamic reports exclusively for members of the NAR.
- RPR's focus is giving residential and commercial real estate practitioners, brokers, and MLS and Association staff the tools they need to serve their clients.
- This report has been provided to you by a member of the NAR.



## About RPR's Data

RPR generates and compiles real estate and other data from a vast array of sources. The data contained in your report includes some or all of the following:

- **Listing data** from our partner MLSs and CIEs, and related calculations, like estimated value for a property or median sales price for a local market.
- **Public records data** including tax, assessment, and deed information. Foreclosure and distressed data from public records.
- **Market conditions and forecasts** based on listing and public records data.
- **Census and employment data** from the U.S. Census and the U.S. Bureau of Labor Statistics.
- **Demographics and trends data** from Esri. The data in commercial and economic reports includes Tapestry Segmentation, which classifies U.S. residential neighborhoods into unique market segments based on socioeconomic and demographic characteristics.
- **Business data** including consumer expenditures, commercial market potential, retail marketplace, SIC and NAICS business information, and banking potential data from Esri.
- **School data and reviews** from Niche.
- **Specialty data sets** such as walkability scores, traffic counts and flood zones.



## Update Frequency

- Listings and public records data are updated on a continuous basis.
- Charts and statistics calculated from listing and public records data are refreshed monthly.
- Other data sets range from daily to annual updates.

## Learn more

For more information about RPR, please visit RPR's public website: <https://blog.narrpr.com>



Silverline Title and Escrow



[exprealty.workplace.com/groups/SilverlineTitle](https://exprealty.workplace.com/groups/SilverlineTitle)

Join Silverline Title's Workplace group for updates and to get started!

Express Offers



[exprealty.workplace.com/groups/ExpressOffersProgramUpdates](https://exprealty.workplace.com/groups/ExpressOffersProgramUpdates)

eXp 360 Tours



[exprealty.workplace.com/groups/eXp360Tours](https://exprealty.workplace.com/groups/eXp360Tours)

NOTE: This communication is provided to you for informational purposes only and should not be relied upon by you. The real estate firm identified on this report is not a mortgage lender and so you should contact the mortgage company identified above directly to learn more about its mortgage products and your eligibility for such products.

IntroLend First Cloud



[exprealty.workplace.com/groups/IntroLend](https://exprealty.workplace.com/groups/IntroLend)

Build A Sign



[exprealty.workplace.com/groups/BuildASign](https://exprealty.workplace.com/groups/BuildASign)

Utility Connect



UTILITYCONNECT

<https://exprealty.workplace.com/groups/UtilityConnect>

America's Preferred Home Warranty



[exprealty.workplace.com/groups/AmericasPreferredHomeWarranty](https://exprealty.workplace.com/groups/AmericasPreferredHomeWarranty)

Currencies Direct



[exprealty.workplace.com/groups/CurrenciesDirect](https://exprealty.workplace.com/groups/CurrenciesDirect)

The CE Shop



[exprealty.workplace.com/groups/TheCEShop](https://exprealty.workplace.com/groups/TheCEShop)