

FOR SALE
5303 PATCH ROAD
ORLANDO, FL 32822

LEE & ASSOCIATES
COMMERCIAL REAL ESTATE SERVICES



PROPERTY HIGHLIGHTS

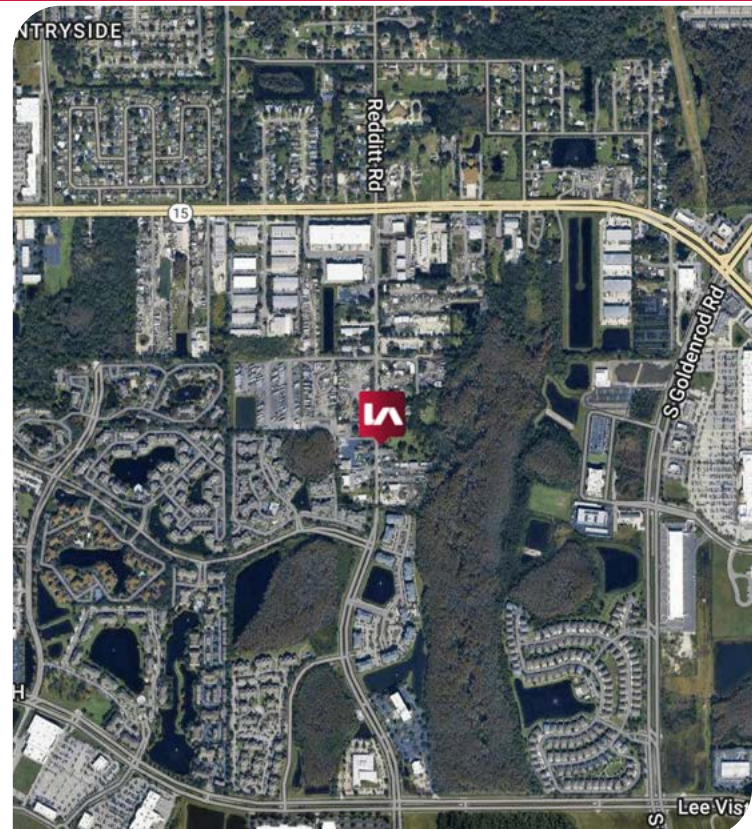
- Building Size: 792 SF
- Land Size: 0.17 Acres
- Three (3) offices, a kitchen, and one (1) bathroom
- Carport that may accommodate four (4) cars
- Fully fenced and secured yard area
- Located just north of Orlando International Airport
- Zoning: Ind-1/Ind-5 (Orange County) which allows outdoor storage, contractor's offices, and vehicle sales/repair, among other uses. View all permitted uses [here](#)

Sale Price: \$500,000

Listing Contact:

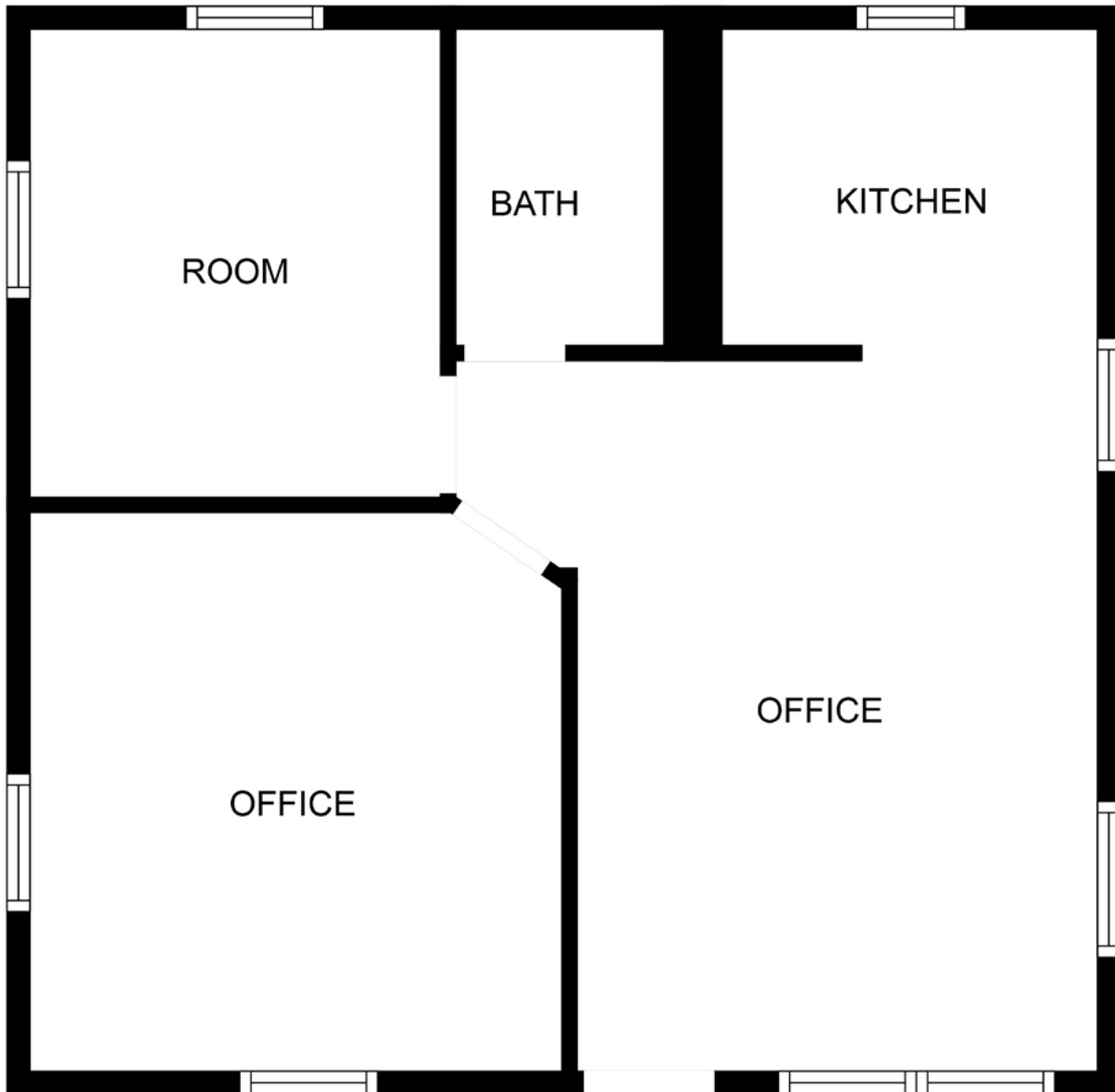
Derek Riggelman, SIOR
Senior Vice President | Principal
driggelman@lee-associates.com
D 321.281.8507

Brock Holston
Associate
bholston@lee-associates.com
D 321.281.8505



5303 PATCH ROAD
ORLANDO, FL 32822

FLOOR PLAN



Listing Contact:

Derek Riggelman, SIOR
Senior Vice President | Principal
driggelman@lee-associates.com
D 321.281.8507

Brock Holston
Associate
bholston@lee-associates.com
D 321.281.8505

All information furnished regarding property for sale, rental or financing is from sources deemed reliable, but no warranty or representation is made to the accuracy thereof and same is submitted to errors, omissions, change of price, rental or other conditions prior to sale, lease or financing or withdrawal without notice. No liability of any kind is to be imposed on the broker herein.

5303 PATCH ROAD
ORLANDO, FL 32822

PROPERTY PHOTOS



Listing Contact:

Derek Riggleman, SIOR
Senior Vice President | Principal
driggleman@lee-associates.com
D 321.281.8507

Brock Holston
Associate
bholston@lee-associates.com
D 321.281.8505

All information furnished regarding property for sale, rental or financing is from sources deemed reliable, but no warranty or representation is made to the accuracy thereof and same is submitted to errors, omissions, change of price, rental or other conditions prior to sale, lease or financing or withdrawal without notice. No liability of any kind is to be imposed on the broker herein.

5303 PATCH ROAD
ORLANDO, FL 32822

PROPERTY PHOTOS



Listing Contact:

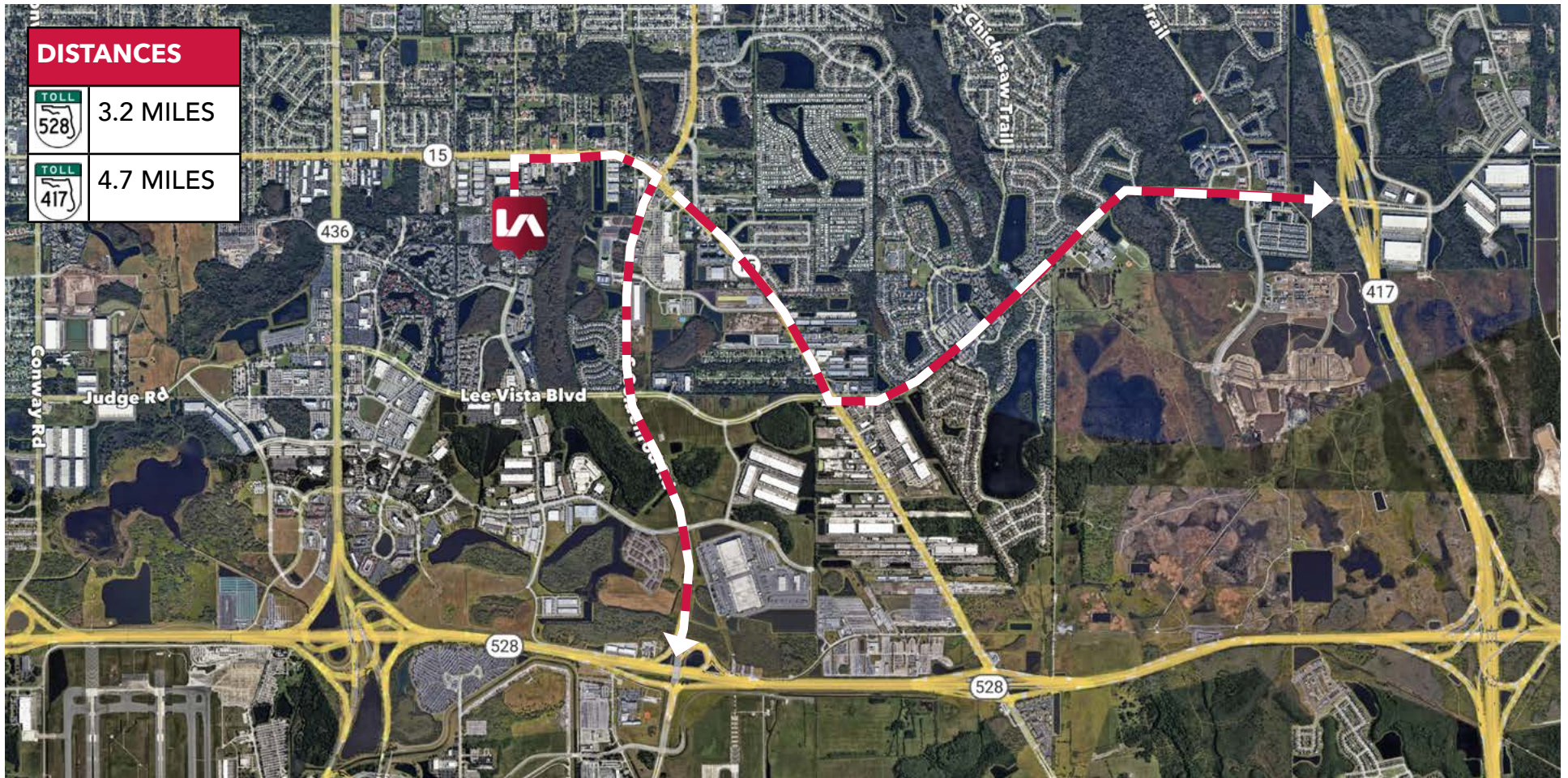
Derek Riggleman, SIOR
Senior Vice President | Principal
driggleman@lee-associates.com
D 321.281.8507

Brock Holston
Associate
bholston@lee-associates.com
D 321.281.8505

All information furnished regarding property for sale, rental or financing is from sources deemed reliable, but no warranty or representation is made to the accuracy thereof and same is submitted to errors, omissions, change of price, rental or other conditions prior to sale, lease or financing or withdrawal without notice. No liability of any kind is to be imposed on the broker herein.

5303 PATCH ROAD

ORLANDO, FL 32822



Listing Contact:

Derek Riggleman, SIOR
Senior Vice President | Principal
driggleman@lee-associates.com
D 321.281.8507

Brock Holston
Associate
bholston@lee-associates.com
D 321.281.8505

All information furnished regarding property for sale, rental or financing is from sources deemed reliable, but no warranty or representation is made to the accuracy thereof and same is submitted to errors, omissions, change of price, rental or other conditions prior to sale, lease or financing or withdrawal without notice. No liability of any kind is to be imposed on the broker herein.