

FOR SALE

OFFICE/WAREHOUSE 1 RAMP & 1 DOCK HIGH DOOR



12493 NW 44th St, Coral Springs, FL 33065
Coral Springs Corporate Center

6,926 +/- SQFT



- Spacious office/warehouse in Coral Springs Corporate Center
- 21' clear ceilings
- 1,744 +/- SQFT mezzanine
- 5 executive offices, 1 break room, and 2 restrooms, and open work area
- Easy access to Sawgrass Expressway and Florida's Turnpike

Terms Negotiable

Call or text **954-224-8773** for more information!



JOE PELAYO, CCIM, SIOR
BROKER
trec@joepelayo.com
954.224.8773

TREC
Total Real Estate Consultants Inc.
www.trecfl.com

GEORGE PELAYO
BROKER ASSOCIATE
george@trecfl.com
954.482.1330



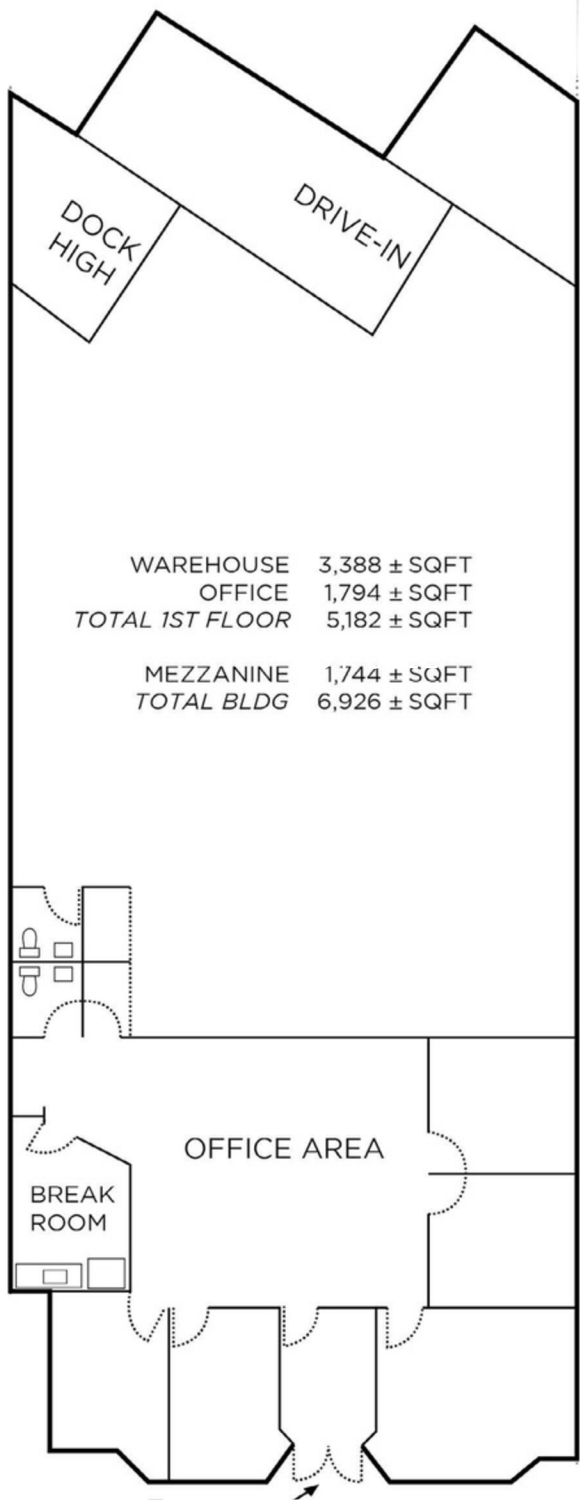
NOTICE: This information has been obtained from sources believed to be reliable but has not been verified. No warranty or representation, express or implied, is made as to the condition/legal adjustments of the property (or properties) referenced or as to the accuracy or completeness of the information contained, and same is submitted subject to errors, omissions, change of price, retail or other conditions, including but not limited to withdrawal without notice, and to any special listing conditions imposed by the property owner.

FOR SALE

OFFICE/WAREHOUSE 1 RAMP & 1 DOCK HIGH DOOR

12493 NW 44th St, Coral Springs, FL 33065
Coral Springs Corporate Center

FLOOR PLAN



Call or text **954-224-8773**
for more information!



JOE PELAYO, CCIM, SIOR
BROKER
trec@joepelayo.com
954.224.8773

TREC
Total Real Estate Consultants Inc.
www.trecfl.com

GEORGE PELAYO
BROKER ASSOCIATE
george@trecfl.com
954.482.1330



NOTICE: This information has been obtained from sources believed to be reliable but has not been verified. No warranty or representation, express or implied, is made as to the condition/legal adjustments of the property (or properties) referenced or as to the accuracy or completeness of the information contained, and same is submitted subject to errors, omissions, change of price, retail or other conditions, including but not limited to withdrawal without notice, and to any special listing conditions imposed by the property owner.