



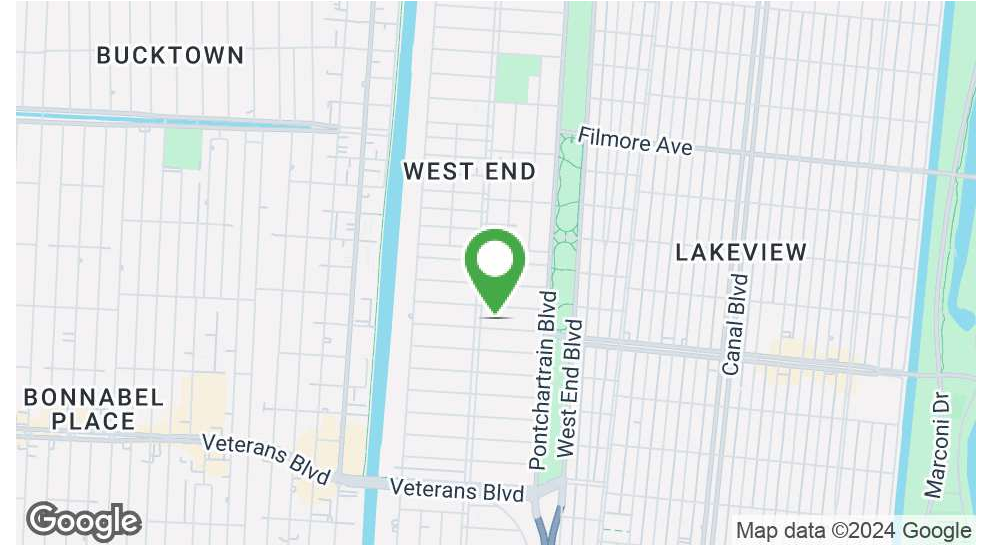
RETAIL/MIXED USE SPACE IN LAKEVIEW

241 W Harrison Ave, New Orleans, LA 70124

ELAINE PELTIER • ASSOCIATE
OFFICE: 504.414.0703
MOBILE: 504.717.3670
epeltier@southeastcre.com

MATT EATON, CCIM • PARTNER
OFFICE: 504.414.0703
MOBILE: 504.339.2136
matt@matteatonccim.com

MARTIN O. MILLER III, CCIM, SIOR • PARTNER
OFFICE: 504.414.0703
MOBILE: 504.616.5700
momiller@ccim.net



PROPERTY DESCRIPTION

This 1,400 square foot space located in the thriving Lakeview neighborhood benefits from its proximity to vibrant commercial and residential areas. Situated at the back of the building, it provides a tranquil retreat from the bustling activity of Harrison Avenue while still being within easy reach of the area's amenities.

The space offers ample room for various potential uses, whether it be retail, office, studio, or creative workspace. The large storage closet provides additional storage space, enhancing the practicality of the layout.

The inclusion of a roll-up door adds versatility to the space, allowing for easy access for inventory, equipment, or simply letting in fresh air and natural light. This feature enhances the functionality of the space and can be particularly appealing for businesses with logistical needs. Overall, this square presents an appealing opportunity for businesses or individuals seeking a private yet accessible location with versatile features to accommodate a range of needs.

OFFERING SUMMARY

Lease Rate:	\$1,800.00 per month (NNN)
Available SF:	1,400 SF

DEMOGRAPHICS	1 MILE	3 MILES	5 MILES
Total Households	9,206	49,693	131,496
Total Population	21,278	107,852	291,971
Average HH Income	\$129,680	\$110,963	\$91,526

RETAIL PROPERTY FOR LEASE

PROPERTY SUMMARY





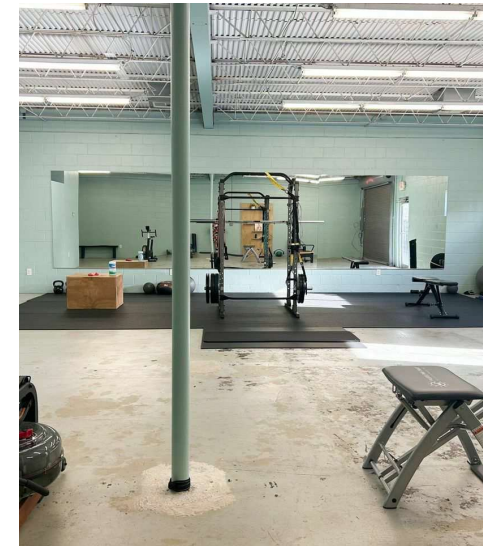
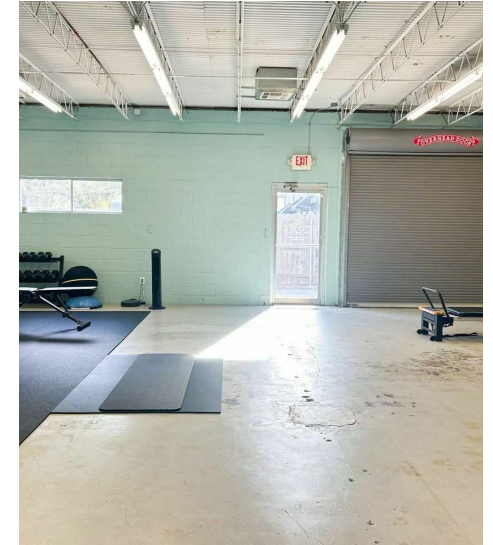
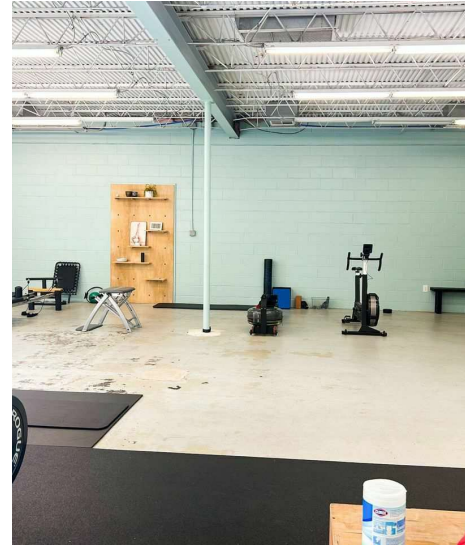
RETAIL/MIXED USE SPACE IN LAKEVIEW

241 W Harrison Ave, New Orleans, LA 70124

ELAINE PELTIER • ASSOCIATE
OFFICE: 504.414.0703
MOBILE: 504.717.3670
epeltier@southeastcre.com

MATT EATON, CCIM • PARTNER
OFFICE: 504.414.0703
MOBILE: 504.339.2136
matt@matteatonccim.com

MARTIN O. MILLER III, CCIM, SIOR • PARTNER
OFFICE: 504.414.0703
MOBILE: 504.616.5700
momiller@ccim.net



RETAIL PROPERTY FOR LEASE

ADDITIONAL PHOTOS

SOUTHEAST COMMERCIAL REAL ESTATE | 2310 19th Street Gulfport, MS 39501 | <https://southeastcre.com>



SOUTHEAST
COMMERCIAL
REAL ESTATE



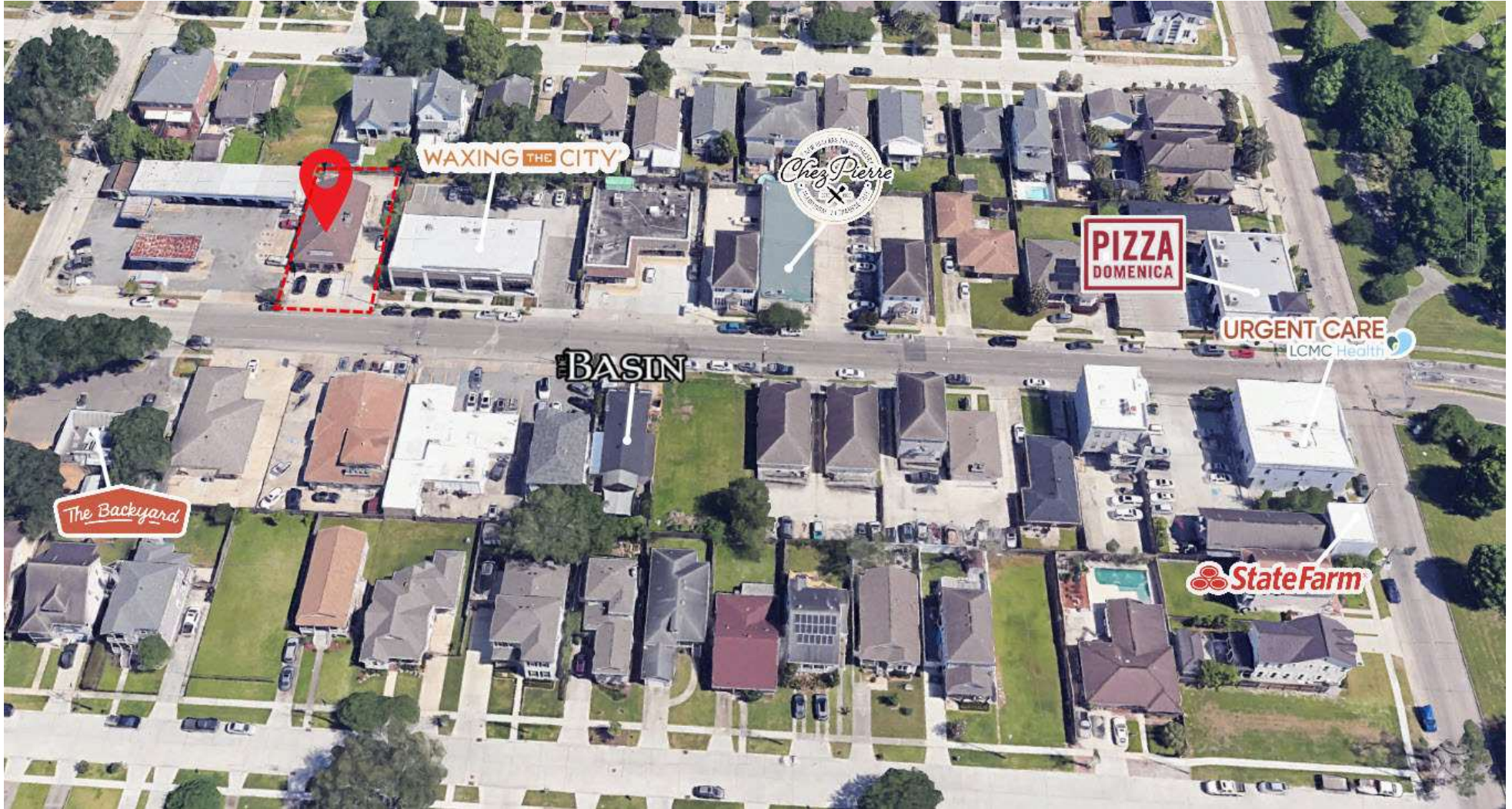
RETAIL/MIXED USE SPACE IN LAKEVIEW

241 W Harrison Ave, New Orleans, LA 70124

ELAINE PELTIER • ASSOCIATE
OFFICE: 504.414.0703
MOBILE: 504.717.3670
epeltier@southeastcre.com

MATT EATON, CCIM • PARTNER
OFFICE: 504.414.0703
MOBILE: 504.339.2136
matt@matteatonccim.com

MARTIN O. MILLER III, CCIM, SIOR • PARTNER
OFFICE: 504.414.0703
MOBILE: 504.616.5700
momiller@ccim.net



RETAIL PROPERTY FOR LEASE

[ADDITIONAL PHOTOS](#)



SOUTHEAST
COMMERCIAL
REAL ESTATE



RETAIL/MIXED USE SPACE IN LAKEVIEW

241 W Harrison Ave, New Orleans, LA 70124

ELAINE PELTIER • ASSOCIATE
OFFICE: 504.414.0703
MOBILE: 504.717.3670
epeltier@southeastcre.com

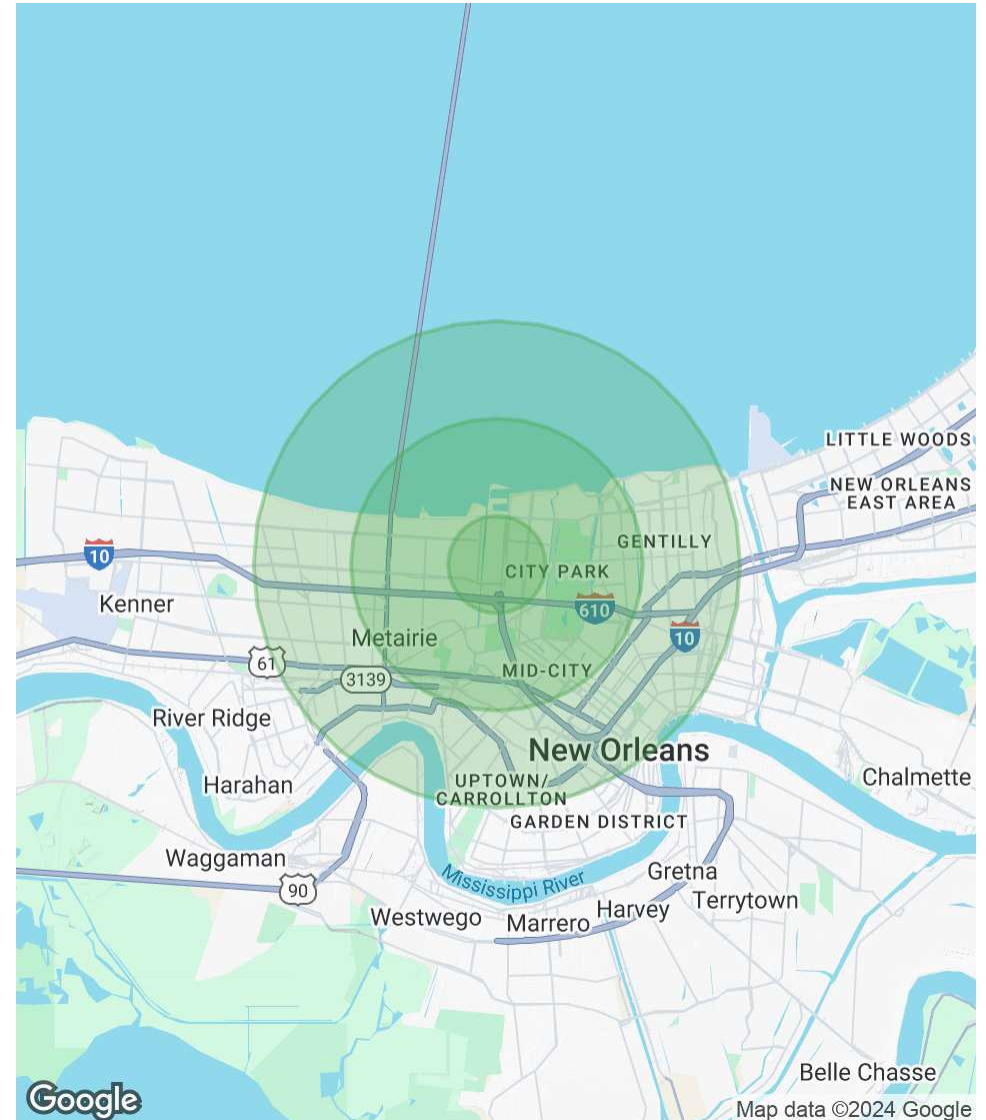
MATT EATON, CCIM • PARTNER
OFFICE: 504.414.0703
MOBILE: 504.339.2136
matt@matteatonccim.com

MARTIN O. MILLER III, CCIM, SIOR • PARTNER
OFFICE: 504.414.0703
MOBILE: 504.616.5700
momiller@ccim.net

POPULATION	1 MILE	3 MILES	5 MILES
Total Population	21,278	107,852	291,971
Average Age	39	42	41
Average Age (Male)	38	40	40
Average Age (Female)	40	43	42

HOUSEHOLDS & INCOME	1 MILE	3 MILES	5 MILES
Total Households	9,206	49,693	131,496
# of Persons per HH	2.3	2.2	2.2
Average HH Income	\$129,680	\$110,963	\$91,526
Average House Value	\$508,065	\$486,996	\$431,196

Demographics data derived from AlphaMap



RETAIL PROPERTY FOR LEASE

DEMOGRAPHICS MAP & REPORT



SOUTHEAST COMMERCIAL REAL ESTATE