

For Lease

# Downtown Office Space

130 - 3,500 SF | \$27.50 - \$30.00 / SF



## 105 East Robinson Street

Orlando, Florida 32801

### Property Highlights

- 50,000± SF, 5-story office building in Downtown Orlando
- Great location at the corner of East Robinson Street and Magnolia Avenue
- Free visitors parking lot
- Free covered parking for tenants
- 4 blocks from I-4 and minutes to SR 408 (East-West)
- 1/2 block from Orange County Courthouse and walking distance to Lake Eola
- Monument signage available
- First floor space available (3,500± SF) with both lobby and street entrances
- Zoning: AC-3A\T

### AVAILABLE SPACES

Space	Lease Rate	Size (SF)
Suite 100	\$30.00 SF/yr	3,500
Suite 205	\$900/Month	130
Suite 213	\$900/Month	169
Suite 210	\$600/Month	164
Suite 301	\$27.50 SF/yr	2,500
Suite 303	\$27.50 SF/yr	3,277
Suite 310	\$27.50 SF/yr	1,445
Suite 530	\$27.50 SF/yr	1,087
Suite 540	\$27.50 SF/yr	2,170

For more information

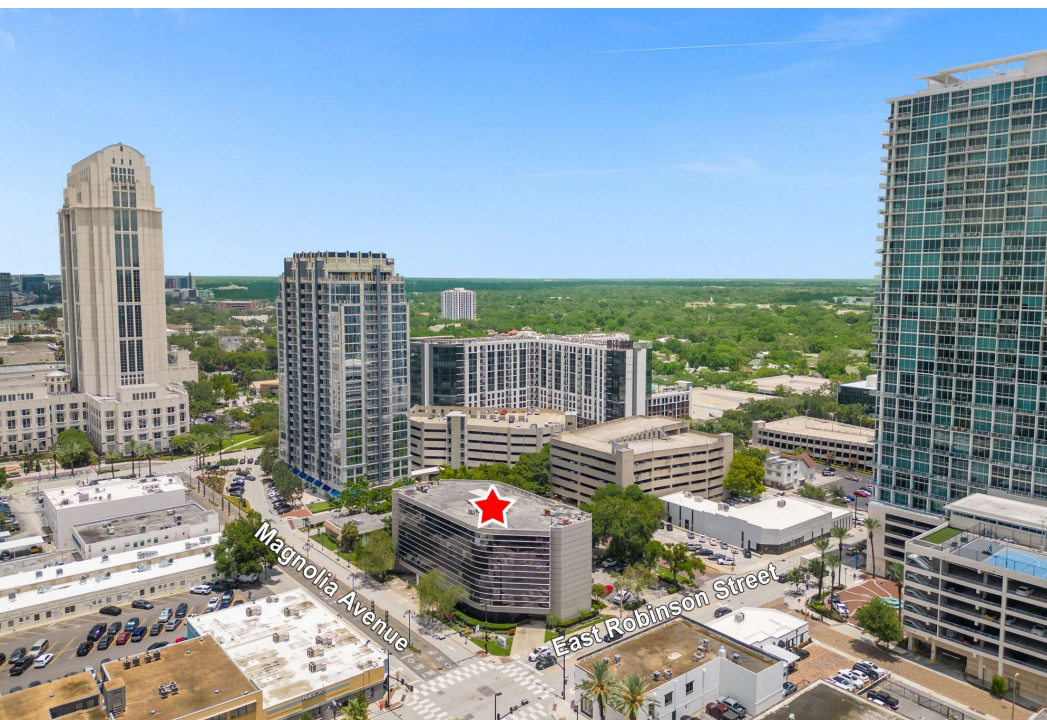
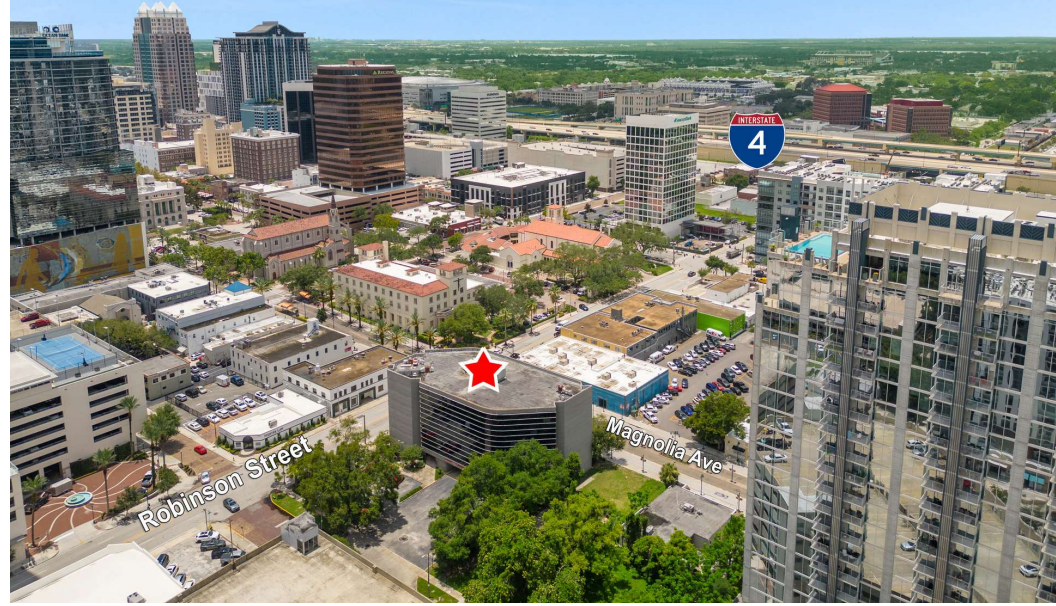
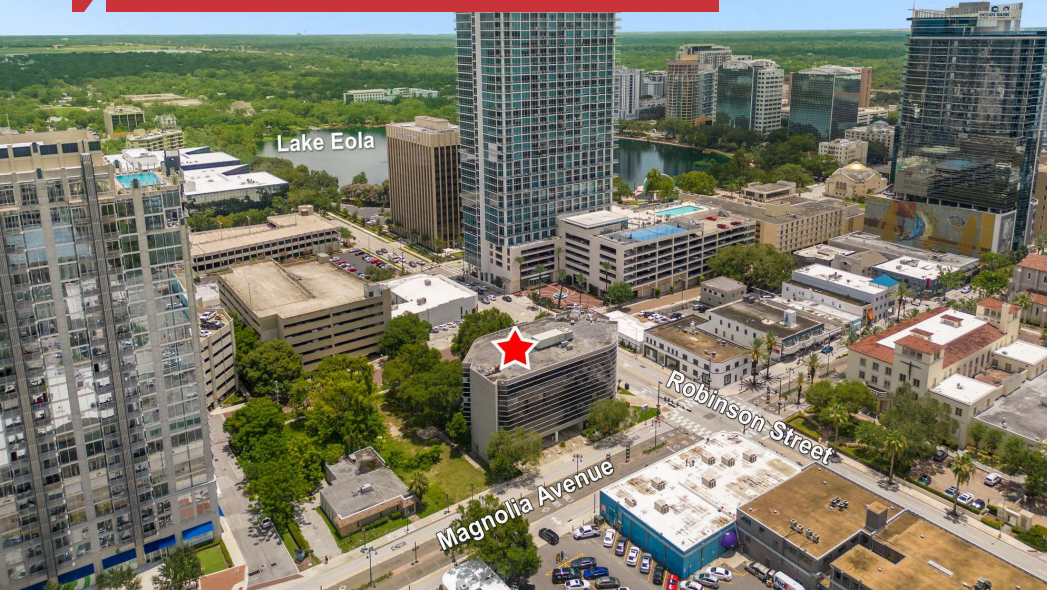
**Jeffrey Bloom, CCIM**

O: 407 949 0709

[jbloom@realvest.com](mailto:jbloom@realvest.com)

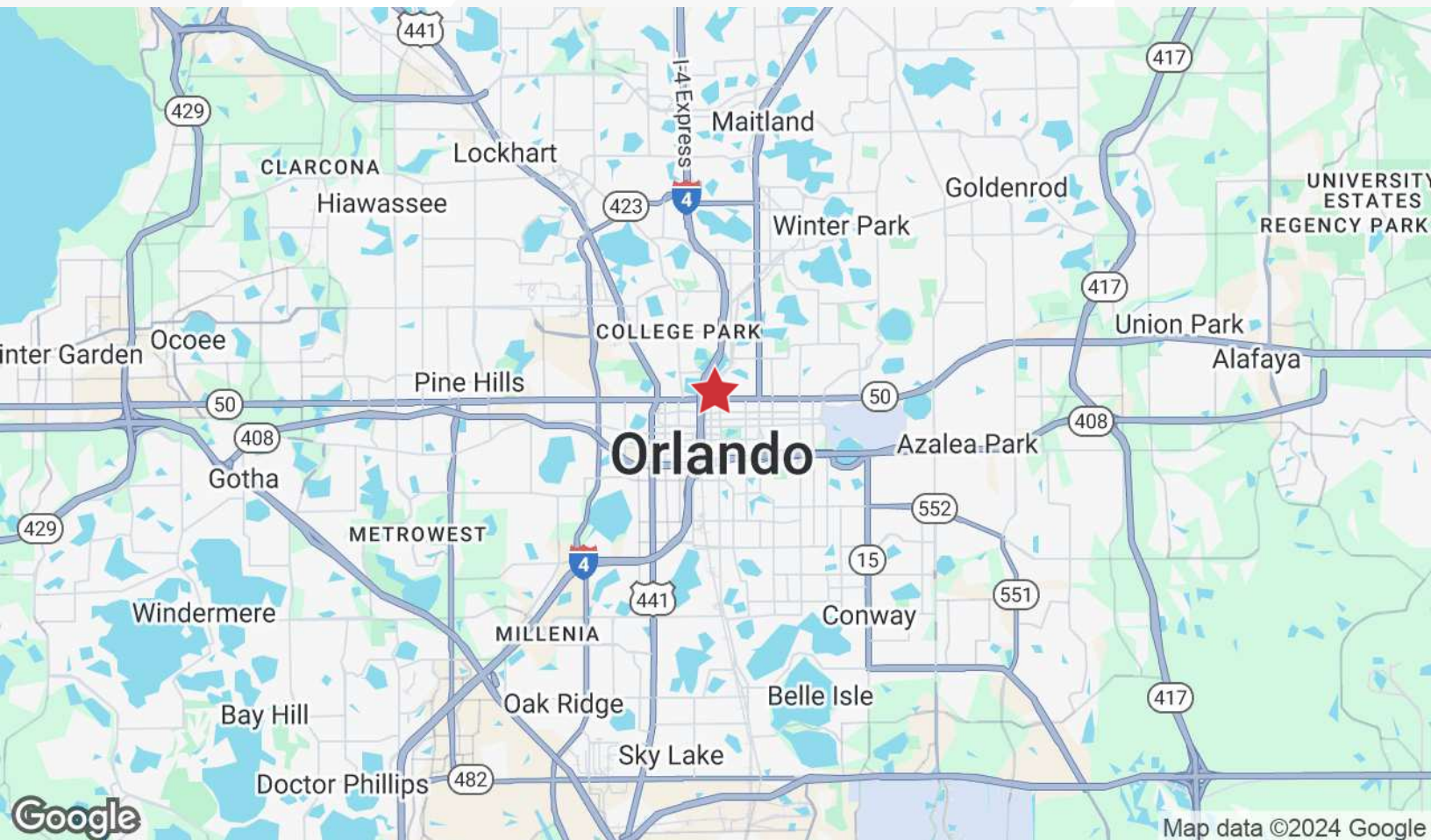
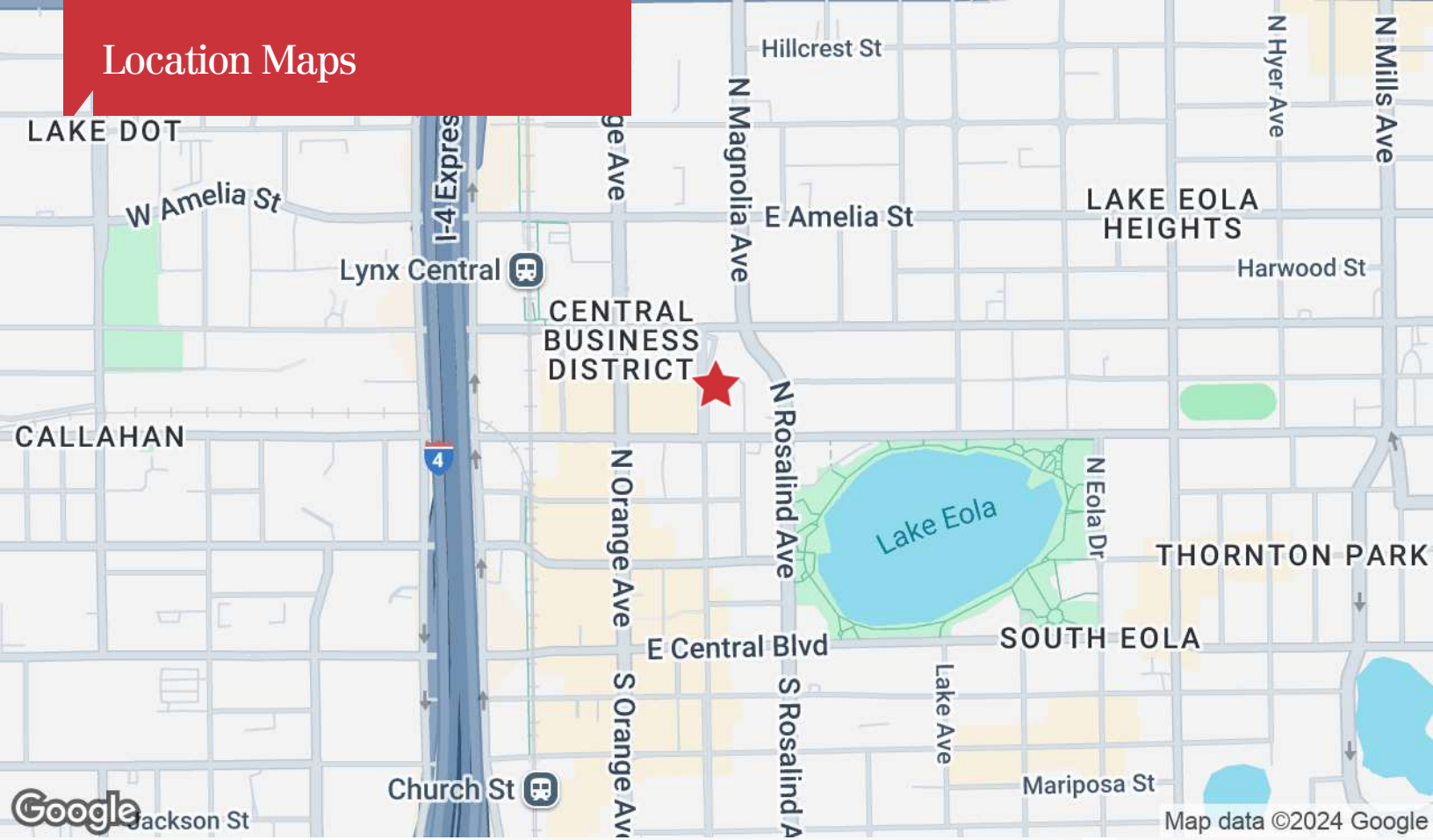


# Property Photos



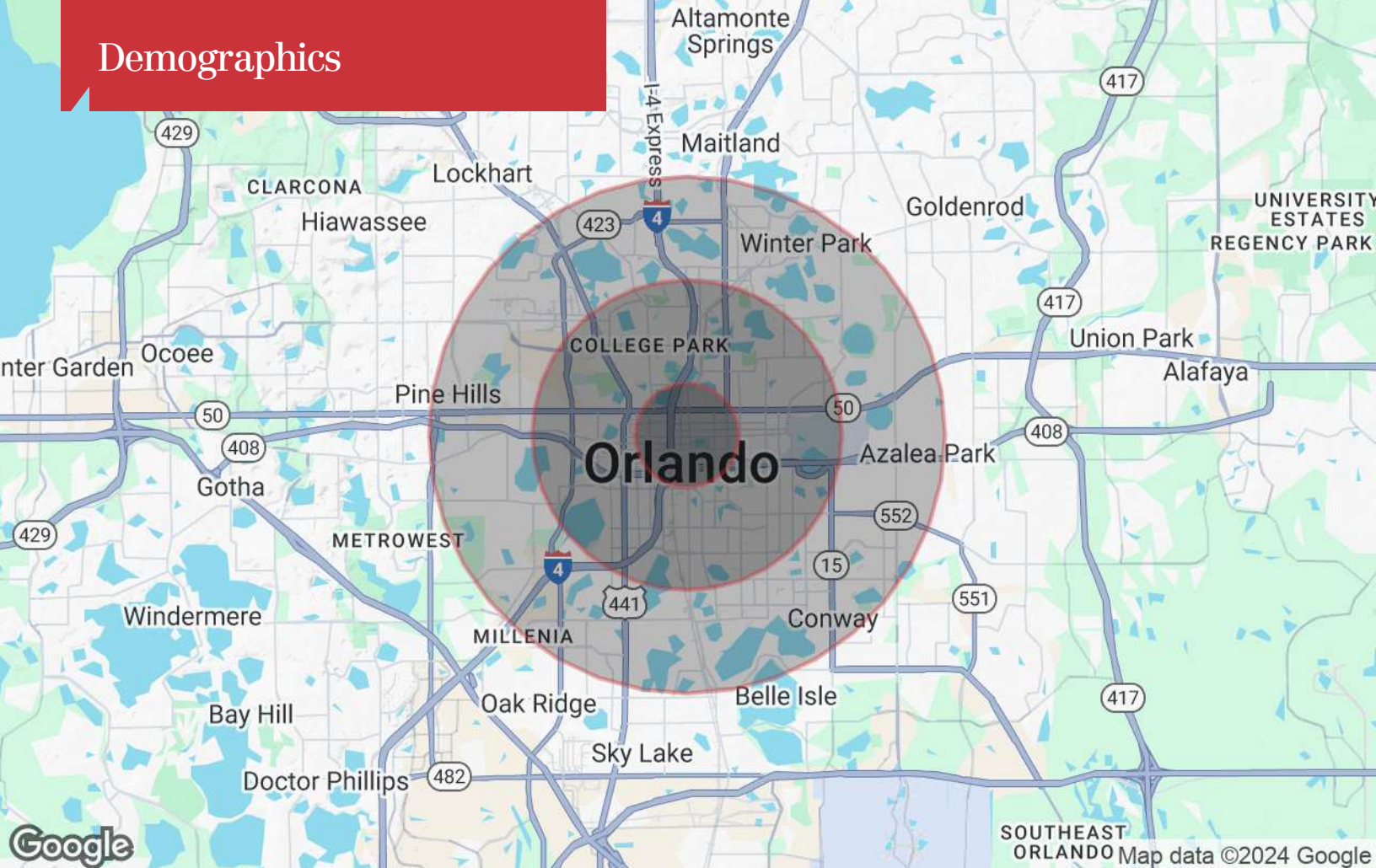


# Location Maps





# Demographics



## Population

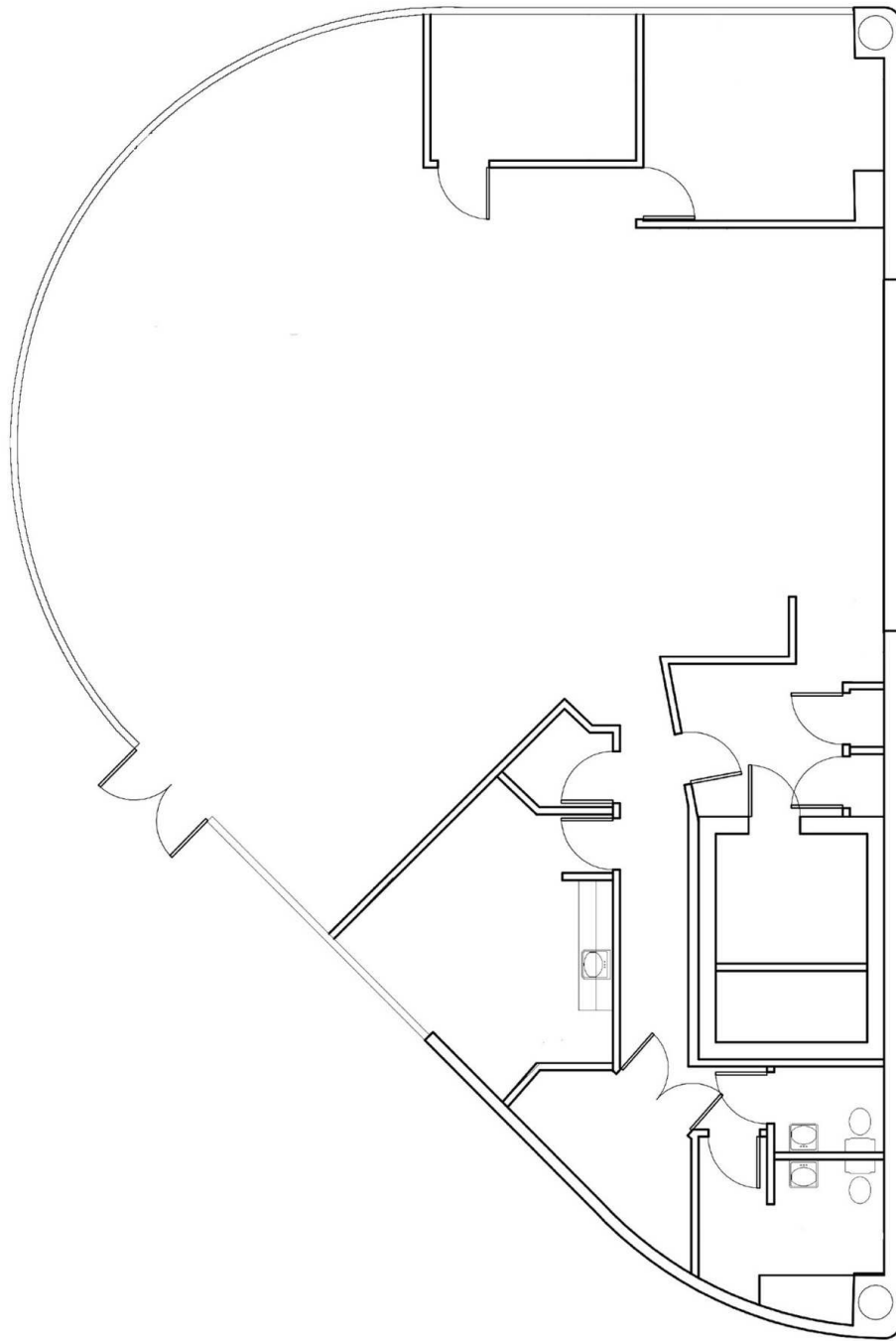
	1 Mile	3 Miles	5 Miles
TOTAL POPULATION	15,915	90,853	277,995
MEDIAN AGE	36.8	39.0	37.7
MEDIAN AGE (MALE)	35.7	38.3	36.2
MEDIAN AGE (FEMALE)	37.9	39.8	39.2

## Households & Income

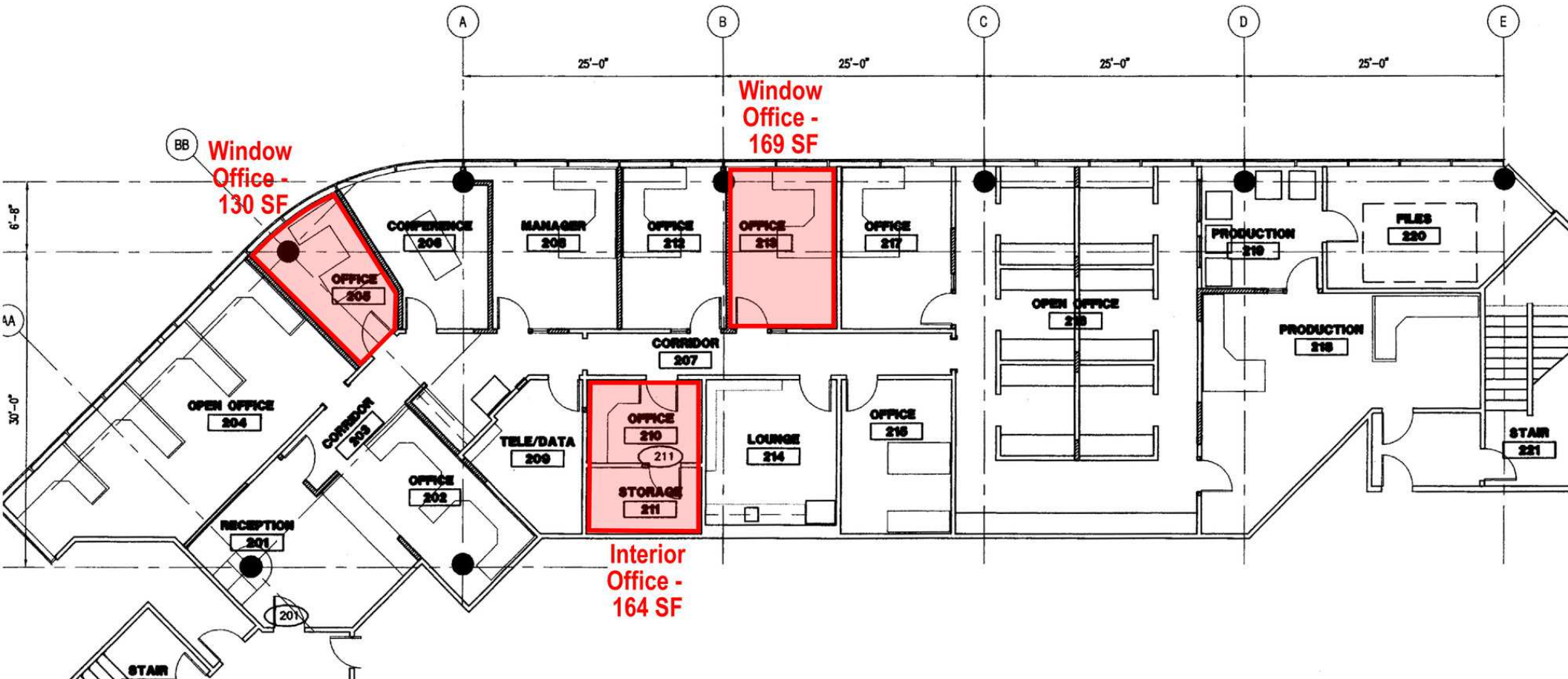
	1 Mile	3 Miles	5 Miles
TOTAL HOUSEHOLDS	12,062	48,641	130,208
# OF PERSONS PER HH	1.3	1.9	2.1
AVERAGE HH INCOME	\$79,867	\$85,064	\$72,492
AVERAGE HOUSE VALUE	\$246,866	\$284,451	\$245,968

\* Demographic data derived from 2020 ACS - US Census

# Suite 100 - 3,500± SF

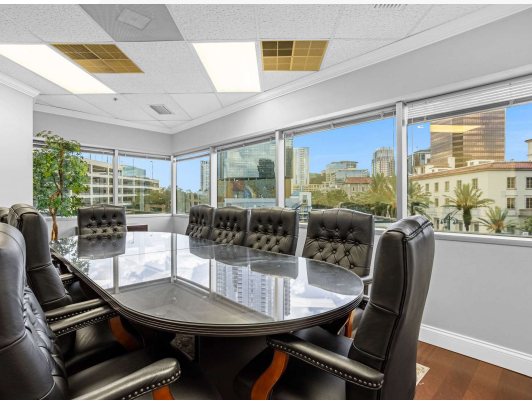


# 2nd Floor Executive Suites

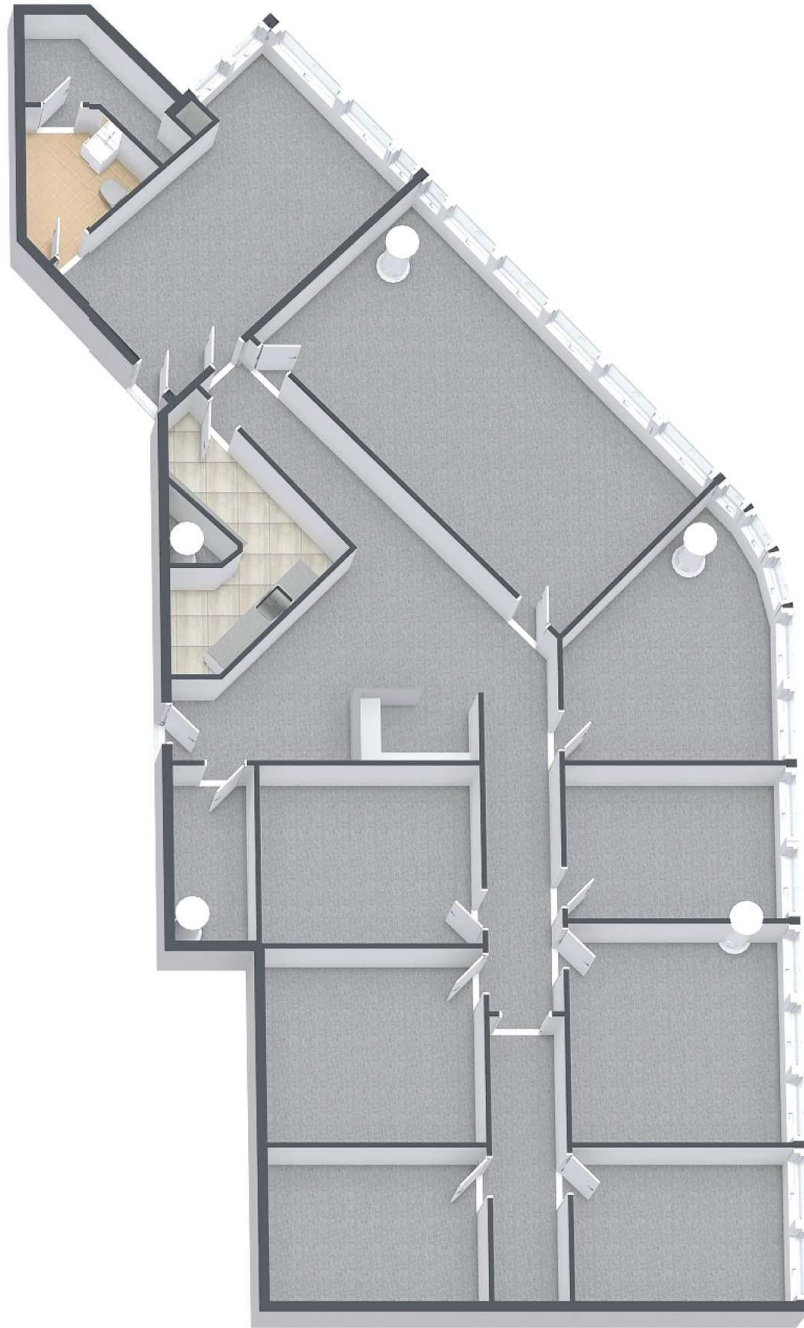




Suite 301 - 2,500± SF

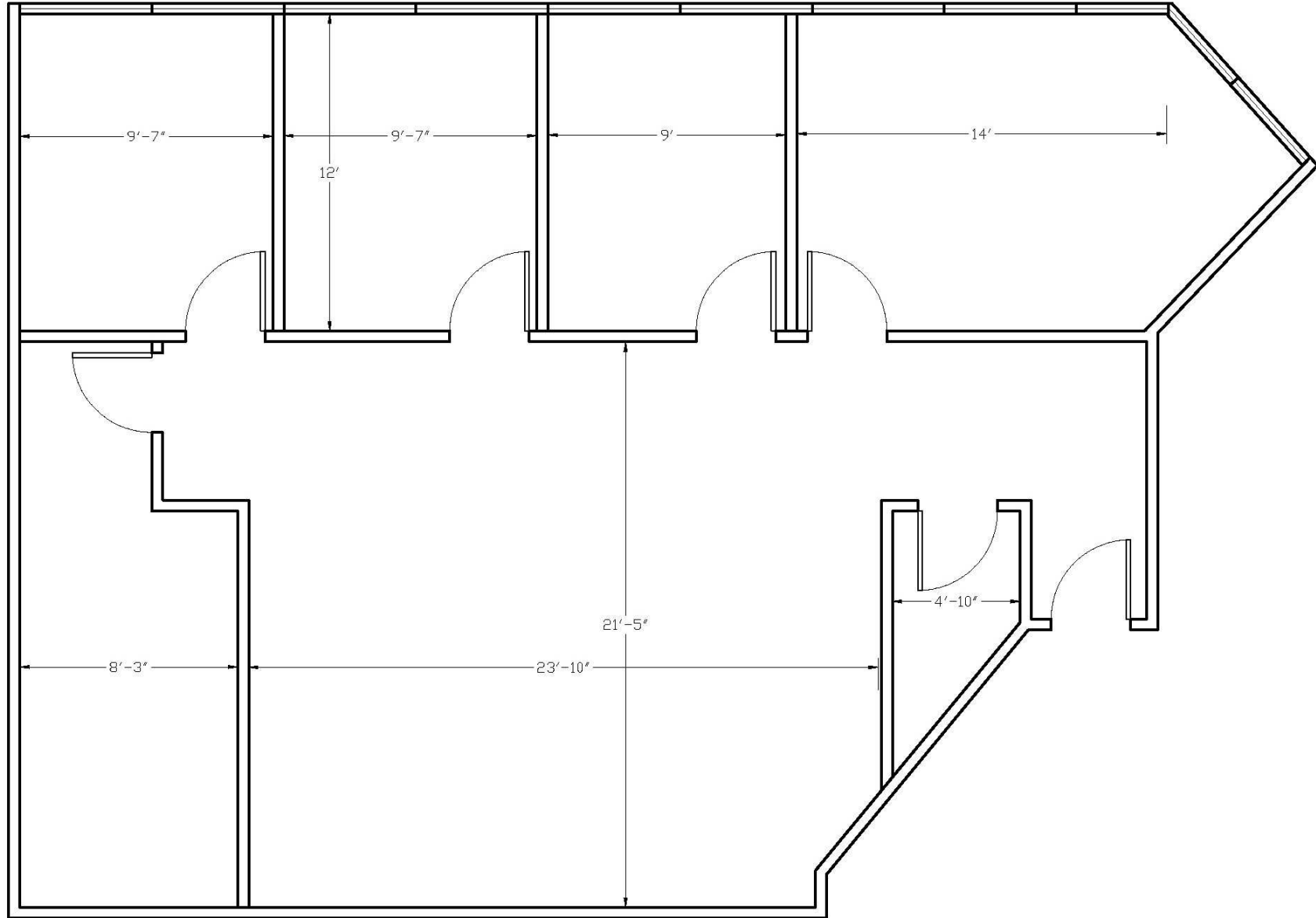


# Suite 303 - 3,277± SF



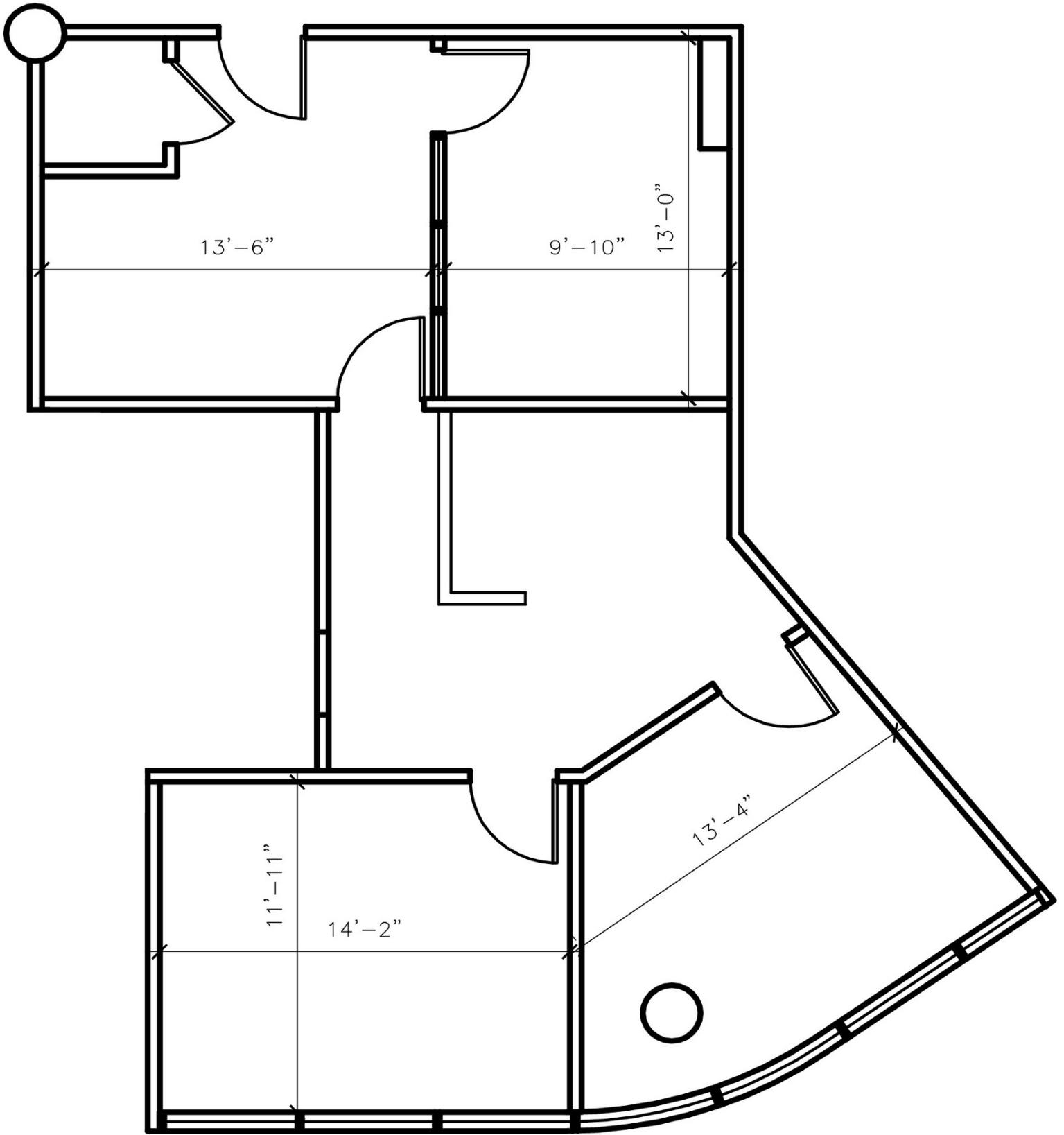


Suite 310 - 1,445± SF





Suite 530 - 1,087± SF





Suite 540 - 2,170± SF

