

Palm Vista Commercial Land

Intersection at Emerson Dr. & St. Johns Heritage Pkwy, Palm Bay, FL

NAI Southcoast



PARCELS CAN BE SUBDIVIDED!

Stuart Duffin, P.A., SIOR, CCIM

Principal | Broker Associate
+1 772.579.0370
sduffin@naisouthcoast.com
www.naisouthcoast.com

JJ Sanguily

Sales Associate
+1 772 286-6292 c +1 772 834.3519
jj@naisouthcoast.com
www.naisouthcoast.com

FOR SALE:

Call For Pricing Guidance

Property Overview

We are pleased to present an exceptional opportunity to acquire up to 61.8 acres of prime commercial land, comprising seven parcels ranging from 2 to just under 15 acres each. This strategically located property is situated at the intersection of Emerson Drive and St. Johns Heritage Parkway, within the highly sought after Palm Vista Master Plan by Lennar. A visionary community slated for the development of 4,000 new Homes. This offering presents an exceptional chance for businesses and developers to be part of the transformative growth within Lennar's Palm Vista Masterplan. With its prime location, diverse parcel sizes, and integration into a flourishing residential community, these parcels are poised to become a vibrant hub for commerce and innovation.

Key Features

Prime Commercial Location:

This collection of commercial parcels is strategically positioned at the future bustling intersection of Emerson Road and St. Johns Heritage Parkway, offering unrivaled visibility and accessibility for businesses looking to thrive in a high-traffic area.

Flexible Parcel Sizes:

With divisible parcels ranging from 2 to just under 15 acres, this property provides a range of options for developers allowing for tailored plans to suite diverse commercial needs

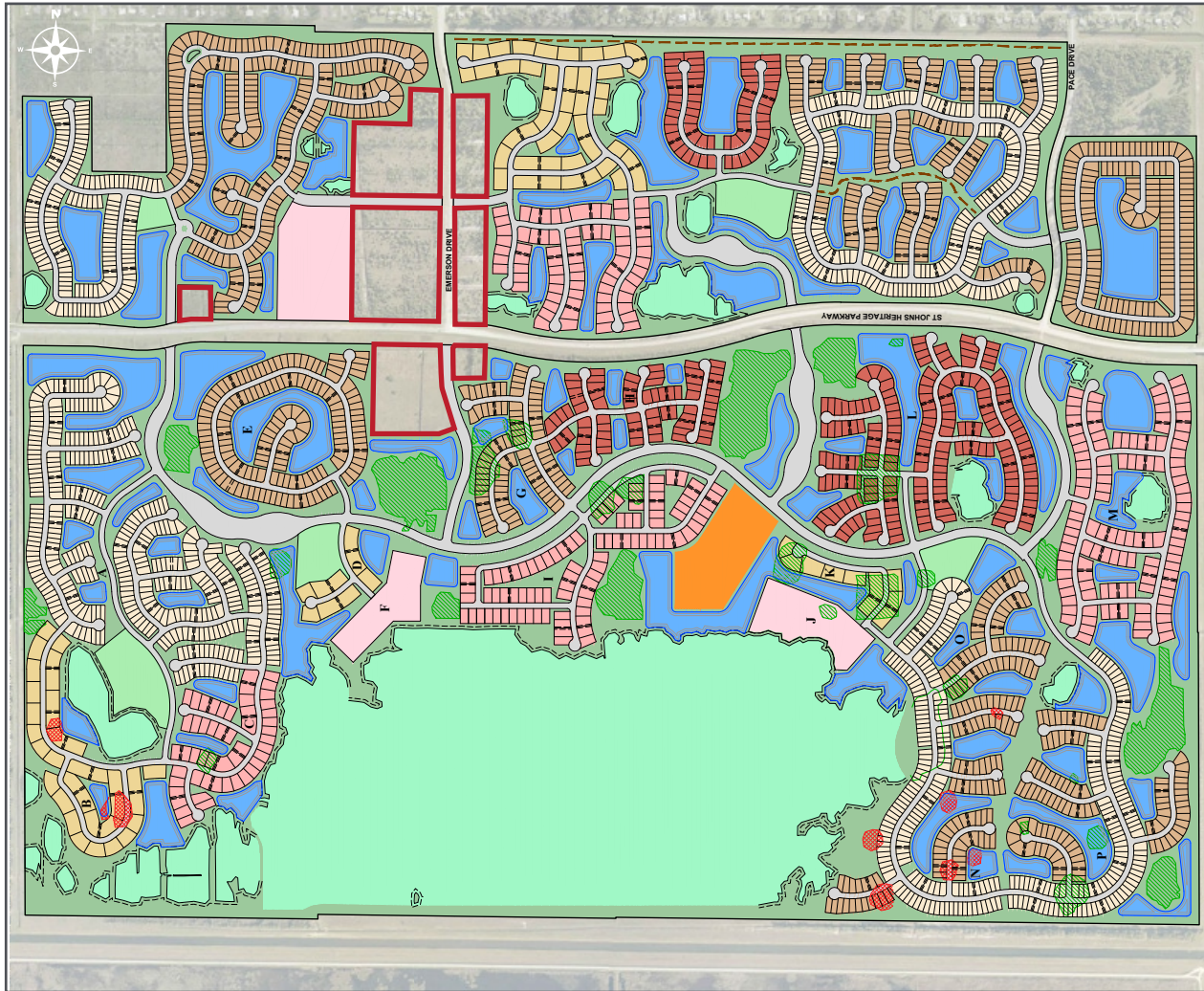
Thriving Residential Community:

The surrounding area is poised for significant residential growth with the planned addition of 4,000 new homes within the Palm Vista Masterplan, ensuring a built-in customer base for local businesses.

Palm Vista Commercial Land

Intersection at Emerson Dr. & St. Johns Heritage Pkwy, Palm Bay, FL

Master Development Site Plan



PALM VISTA - WEST		
NW - (NON-AGE RESTRICTED)		
POD	PRODUCT	UNITS
A	SINGLE FAMILY - 40's	364
B	TOWNHOME - 4-unit & 6-unit	168
C	TWIN VILLAS	102
NW - UNIT TOTAL		634
SW - ACTIVE ADULT (AGE RESTRICTED)		
D	TOWNHOME - 4-unit & 6-unit	46
E	SINGLE FAMILY - 50's	149
F	MULTI-FAMILY CONDO	140
G	SINGLE FAMILY - 50's	82
H	SINGLE FAMILY - 60's	72
I	TWIN VILLAS	186
J	MULTI-FAMILY CONDO	140
K	TOWNHOME - 4-unit & 6-unit	52
L	SINGLE FAMILY - 60's	179
M	TWIN VILLAS	240
N	SINGLE FAMILY - 40's	90
	SINGLE FAMILY - 50's	43
O	SINGLE FAMILY - 40's	69
	SINGLE FAMILY - 50's	77
P	SINGLE FAMILY - 40's	120
	SINGLE FAMILY - 50's	94
SW - UNIT TOTAL		1779
WEST - UNIT TOTAL		2413

PALM VISTA - NORTHEAST	
NE - (NON-AGE RESTRICTED)	
PRODUCT	UNITS
SINGLE FAMILY - 40's	156
SINGLE FAMILY - 50's	242
MULTI-FAMILY	187
NE - UNIT TOTAL	585

PALM VISTA - EAST MEDLEY AT EVERLANDS	
ACTIVE ADULT (AGE RESTRICTED)	
PRODUCT	UNITS
TWIN VILLAS	150
TOWNHOME - 4-unit & 6-unit	234
SINGLE FAMILY - 40's	228
SINGLE FAMILY - 50's	166
SINGLE FAMILY - 60's	62
E - UNIT TOTAL	840

PALM VISTA - SOUTHEAST EVERLANDS	
PRODUCT	UNITS
SINGLE FAMILY - 50's	162
SE - UNIT TOTAL	162

LEGEND	
	TWIN VILLAS
	TOWNHOME - 4-unit & 6-unit
	MULTI-FAMILY
	SINGLE FAMILY - 40's
	SINGLE FAMILY - 50's
	SINGLE FAMILY - 60's
	AMENITY CENTER
	TOWN CENTER

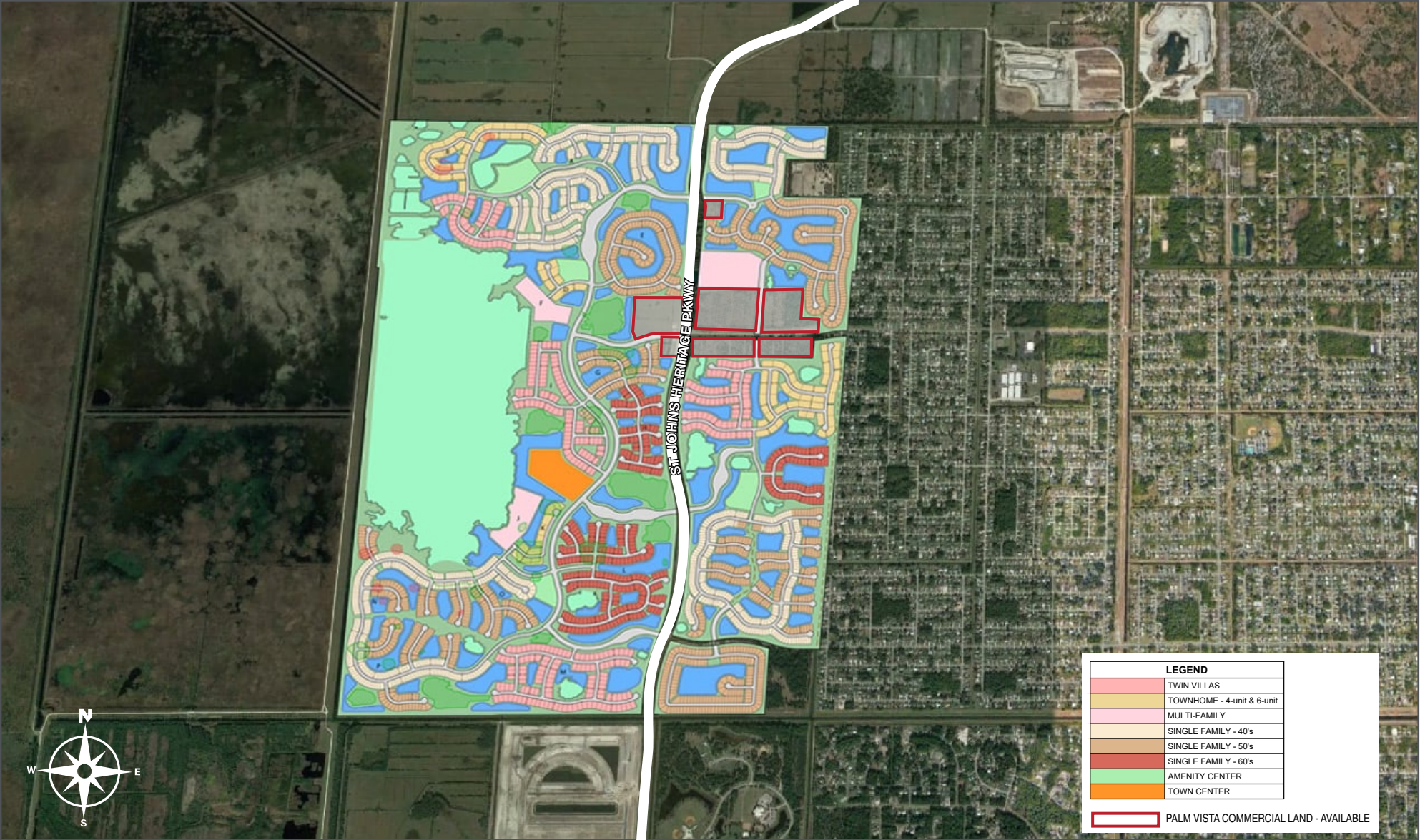
PALM VISTA - OVERALL UNIT COUNT SUMMARY	
	UNITS
WEST	2413
NORTHEAST	585
EAST	840
EVERLANDS (SOUTHEAST)	162
UNIT TOTAL	4000

PALM VISTA COMMERCIAL LAND - AVAILABLE

Palm Vista Commercial Land

Intersection at Emerson Dr. & St. Johns Heritage Pkwy, Palm Bay, FL

Master Development Site Plan



Palm Vista Commercial Land

Intersection at Emerson Dr. & St. Johns Heritage Pkwy, Palm Bay, FL



Palm Vista Commercial Land

Intersection at Emerson Dr. & St. Johns Heritage Pkwy, Palm Bay, FL

North View



Palm Vista Commercial Land

Intersection at Emerson Dr. & St. Johns Heritage Pkwy, Palm Bay, FL

East View



Palm Vista Commercial Land

Intersection at Emerson Dr. & St. Johns Heritage Pkwy, Palm Bay, FL

South View



Palm Vista Commercial Land

Intersection at Emerson Dr. & St. Johns Heritage Pkwy, Palm Bay, FL

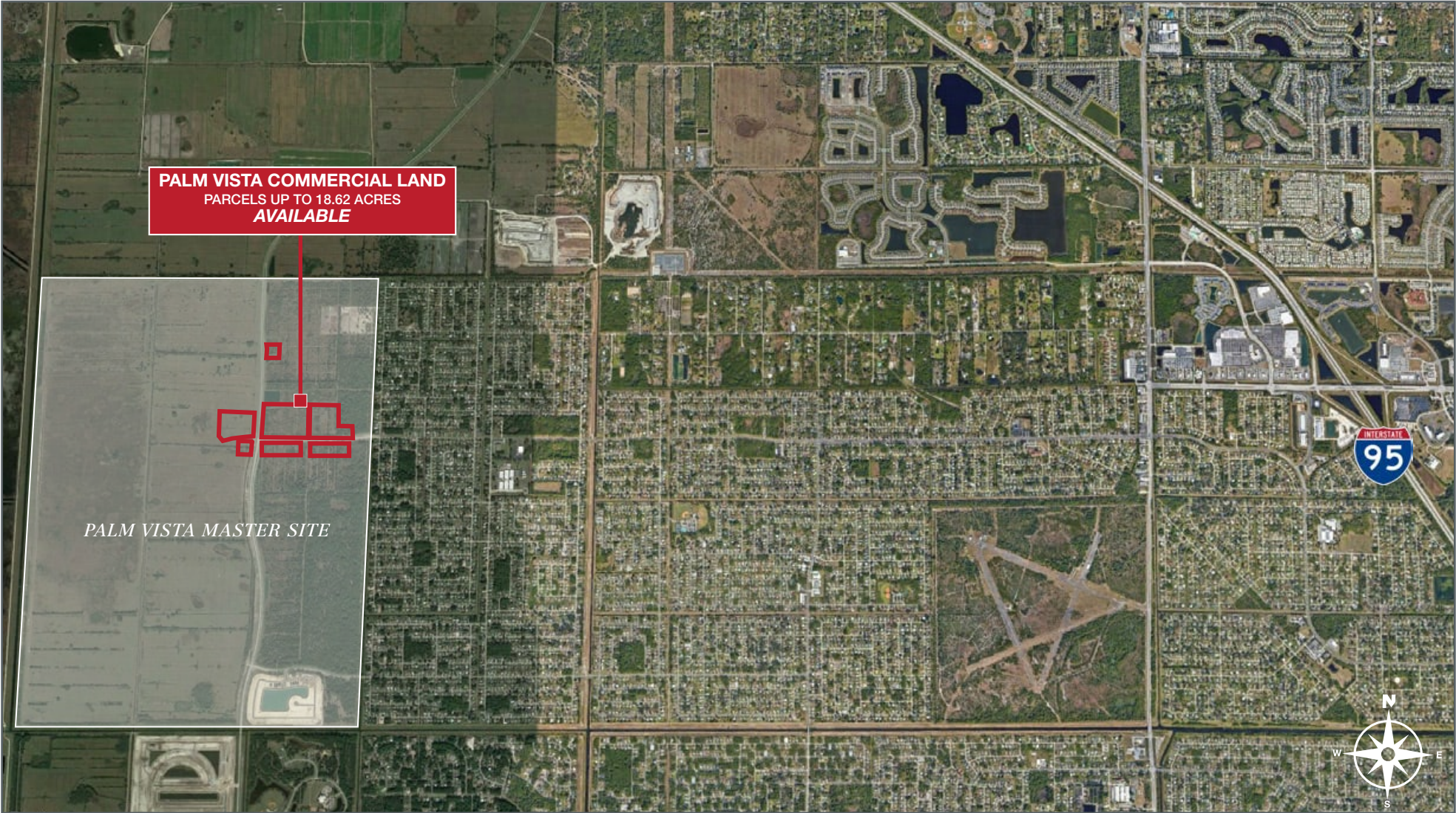
Southeastern View



Palm Vista Commercial Land

Intersection at Emerson Dr. & St. Johns Heritage Pkwy, Palm Bay, FL

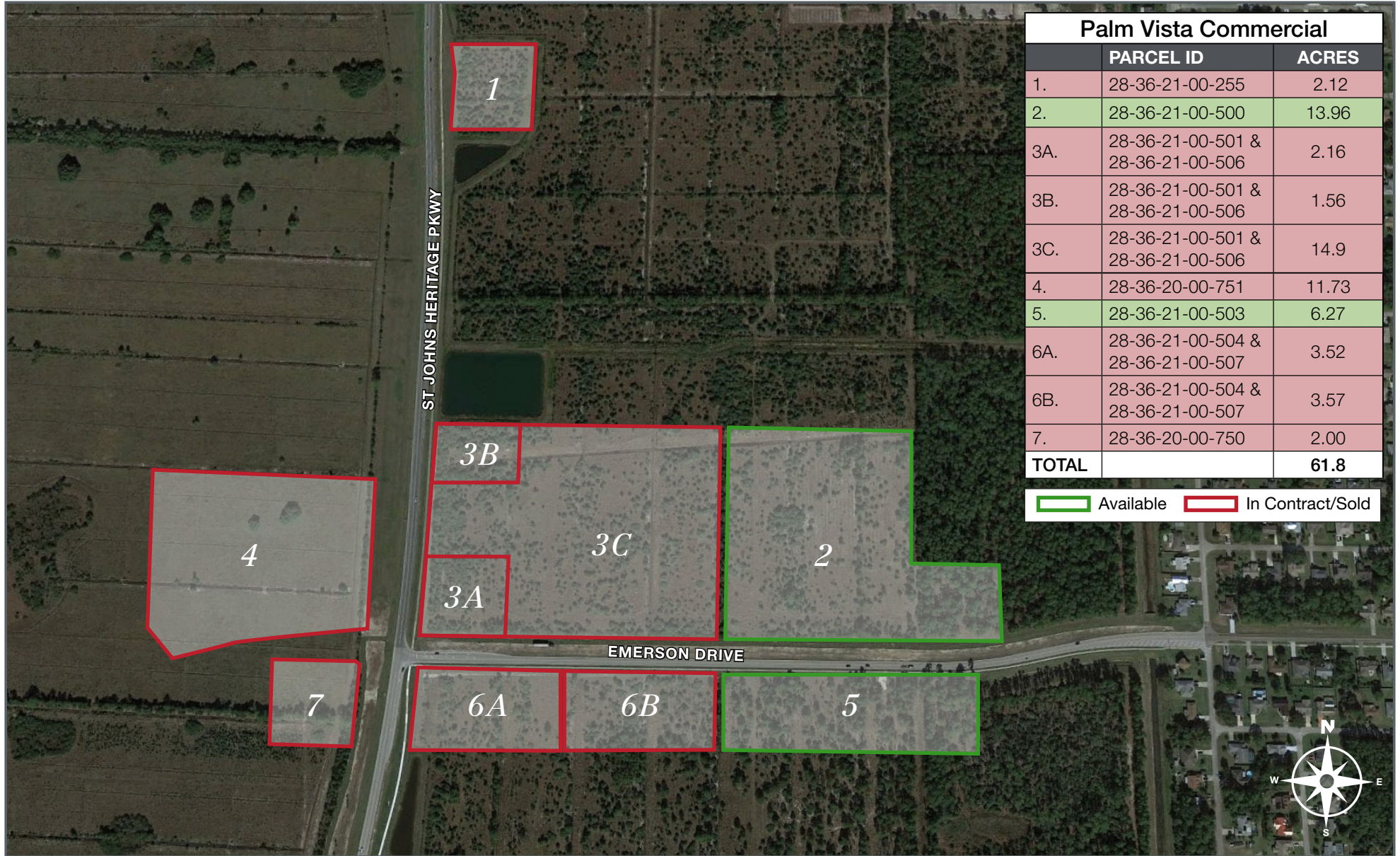
Satellite Image



Palm Vista Commercial Land

Intersection at Emerson Dr. & St. Johns Heritage Pkwy, Palm Bay, FL

Parcel Map



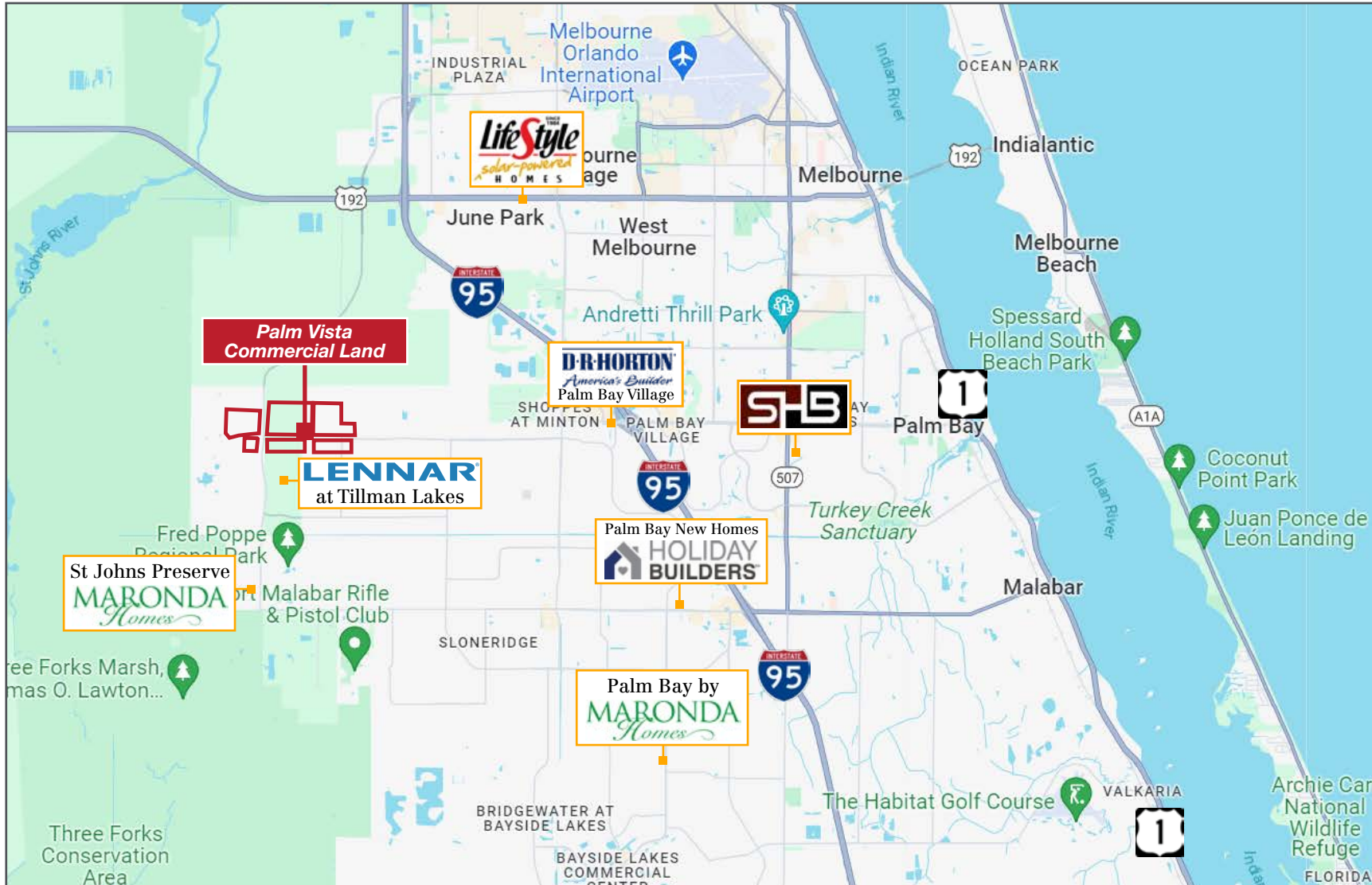
Palm Vista Commercial		
	PARCEL ID	ACRES
1.	28-36-21-00-255	2.12
2.	28-36-21-00-500	13.96
3A.	28-36-21-00-501 & 28-36-21-00-506	2.16
3B.	28-36-21-00-501 & 28-36-21-00-506	1.56
3C.	28-36-21-00-501 & 28-36-21-00-506	14.9
4.	28-36-20-00-751	11.73
5.	28-36-21-00-503	6.27
6A.	28-36-21-00-504 & 28-36-21-00-507	3.52
6B.	28-36-21-00-504 & 28-36-21-00-507	3.57
7.	28-36-20-00-750	2.00
TOTAL		61.8

Available In Contract/Sold

Palm Vista Commercial Land

Intersection at Emerson Dr. & St. Johns Heritage Pkwy, Palm Bay, FL

Palm Bay Area Map



Palm Vista Commercial Land

Intersection at Emerson Dr. & St. Johns Heritage Pkwy, Palm Bay, FL

Quarterly Market Detail Brevard County (Palm Bay-Melbourne-Titusville)

Single Family Homes

Summary Statistics	Q2 2024	Q2 2023	Percent Change Year-over-Year
Closed Sales	2,752	2,826	-2.6%
Paid in Cash	628	746	-15.8%
Median Sale Price	\$375,000	\$360,000	4.2%
Average Sale Price	\$469,796	\$449,034	4.6%
Dollar Volume	\$1.3 Billion	\$1.3 Billion	1.9%
Median Percent of Original List Price Received	97.1%	97.7%	-0.6%
Median Time to Contract	34 Days	22 Days	54.5%
Median Time to Sale	73 Days	65 Days	12.3%
New Pending Sales	2,995	2,893	3.5%
New Listings	3,656	3,121	17.1%
Pending Inventory	1,237	1,332	-7.1%
Inventory (Active Listings)	3,053	1,746	74.9%
Months Supply of Inventory	3.9	2.1	85.7%

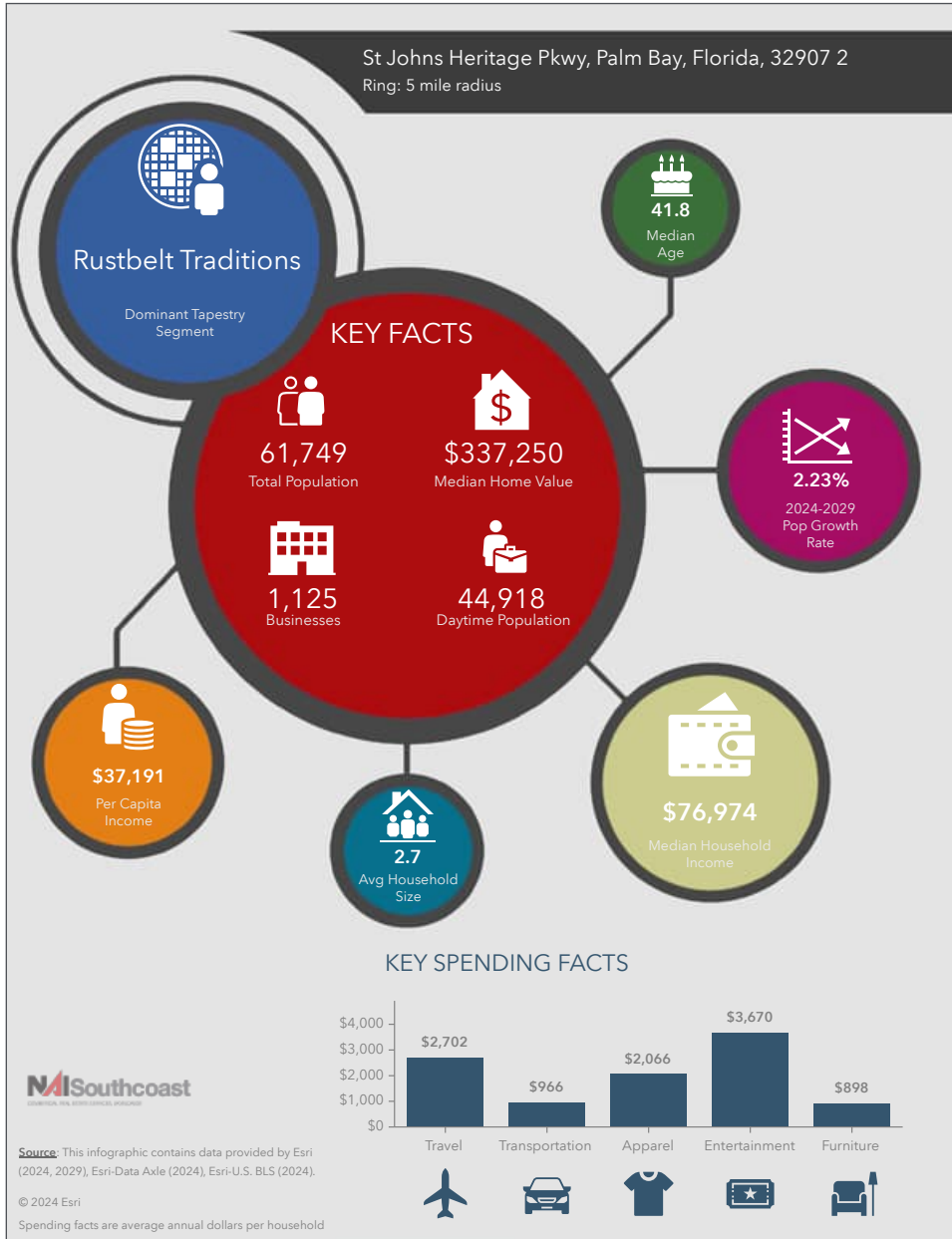
Townhomes

Summary Statistics	Q2 2024	Q2 2023	Percent Change Year-over-Year
Closed Sales	660	719	-8.2%
Paid in Cash	364	374	-2.7%
Median Sale Price	\$299,250	\$300,000	-0.3%
Average Sale Price	\$380,258	\$355,261	7.0%
Dollar Volume	\$251.0 Million	\$255.4 Million	-1.7%
Median Percent of Original List Price Received	94.0%	96.3%	-2.4%
Median Time to Contract	50 Days	25 Days	100.0%
Median Time to Sale	86 Days	61 Days	41.0%
New Pending Sales	670	691	-3.0%
New Listings	983	803	22.4%
Pending Inventory	275	345	-20.3%
Inventory (Active Listings)	1,194	643	85.7%
Months Supply of Inventory	6.3	3.1	103.2%

Palm Vista Commercial Land

Intersection at Emerson Dr. & St. Johns Heritage Pkwy, Palm Bay, FL

2024 Demographics



Population

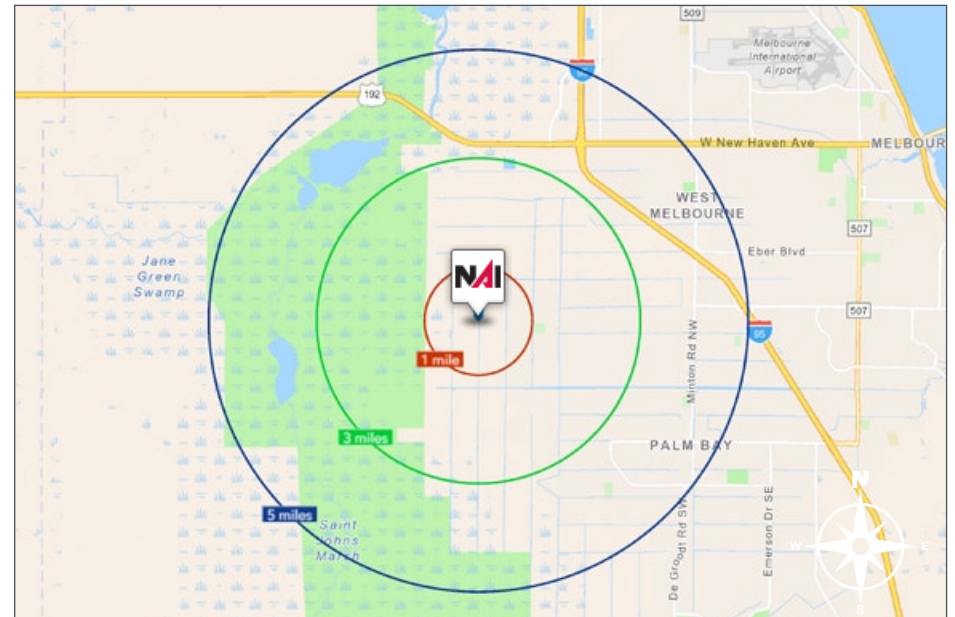
- 1 Mile: 2,388
- 3 Mile: 22,850
- 5 Mile: 61,749

Average Household Income

- 1 Mile: \$80,664
- 3 Mile: \$92,369
- 5 Mile: \$100,723

Median Age

- 1 Mile: 43.1
- 3 Mile: 42.0
- 5 Mile: 41.8



City Overview

City of Palm Bay, Florida



Palm Bay, Florida, situated along the picturesque eastern coast of the state, is a vibrant city that seamlessly blends natural beauty with urban development. As the largest city in Brevard County, Palm Bay offers residents and visitors a diverse array of attractions, stunning landscapes, and a thriving community spirit.

The city's claim to fame lies in its stunning waterfront areas, with the Indian River Lagoon to the west and the Atlantic Ocean to the east. These bodies of water not only provide breathtaking views but also offer recreational opportunities such as boating, fishing, and water sports. The Turkey Creek Sanctuary, a nature reserve within the city, further enhances Palm Bay's commitment to preserving its rich ecological diversity.

Palm Bay is home to a mix of residential neighborhoods, each with its own unique character. From family-friendly communities with top-rated schools to upscale waterfront properties, the city caters to a diverse range of lifestyles. The housing market reflects the city's growth, with a combination of modern developments and established neighborhoods, providing a range of options for prospective residents.

The city's commitment to education is evident through its well-regarded schools and educational institutions. Palm Bay is served by the Brevard County School District, ensuring quality education for students at all levels. Higher education opportunities are also available with the nearby Florida Institute of Technology, offering a range of academic programs.

Palm Bay's economic landscape is shaped by a mix of industries, including aerospace and technology. The presence of major employers in these sectors has contributed to the city's economic stability and job growth. Additionally, the city's strategic location along major transportation routes facilitates commerce and trade.

Residents and visitors alike can enjoy a variety of recreational activities in Palm Bay. The city boasts numerous parks, sports facilities, and cultural venues. Fred Poppe Regional Park, for example, offers sports fields, playgrounds, and picnic areas, providing a space for community gatherings and outdoor enjoyment.

Palm Bay, Florida, stands out as a city that harmoniously blends natural beauty, a diverse community, and economic opportunities. With its stunning waterfront, educational excellence, and recreational offerings, Palm Bay has become a sought-after destination for those seeking a balanced and fulfilling lifestyle on Florida's Space Coast.

Regional Overview

Brevard County, FL

Brevard County, on Florida's east coast, is renowned for its natural wonders, space exploration, and vibrant communities. The county, encompassing various cities and towns, provides a unique mix of coastal beauty, educational excellence, and a rich cultural tapestry.

At its core, Brevard County is synonymous with space exploration, housing the Kennedy Space Center, a renowned spaceport that launched historic missions like the Apollo moon landings and Space Shuttle launches. This has made the Space Coast a hub for aerospace and technology industries.

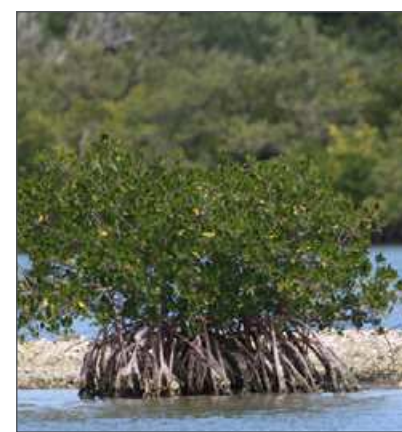
The county's Atlantic Ocean coastline offers stunning beaches and recreational opportunities, from bustling Cocoa Beach to the serene Canaveral National Seashore. The Indian River Lagoon adds to the area's natural charm.

Brevard County hosts diverse communities, each with unique character and amenities. Melbourne, the largest city, features residential neighborhoods, cultural attractions, and educational institutions. Titusville, with historic charm, serves as a gateway to the Kennedy Space Center and Merritt Island National Wildlife Refuge. Satellite Beach and Palm Bay offer varied housing options and community experiences.

Education is a priority, with the Brevard County School District ensuring academic excellence. Higher education is accessible through institutions like the Florida Institute of Technology.

Recreational activities are abundant, from outdoor adventures in parks to cultural events. The county's commitment to preserving natural beauty is evident in conservation areas and wildlife sanctuaries.

Brevard County, Florida, offers a captivating blend of space exploration, coastal beauty, and diverse communities. With a rich history, educational opportunities, and innovation, Brevard County remains a place where residents enjoy a high quality of life amidst the wonders of Florida's Space Coast.





Stuart Duffin, P.A., SIOR, CCIM

Principal | Broker Associate
+1 772 286 6292
sduffin@naisouthcoast.com
www.naisouthcoast.com



JJ Sanguily

Sales Associate
+1 772 286-6292 c +1 772 834 3519
jj@naisouthcoast.com
www.naisouthcoast.com

Palm Vista Commercial Land

Intersection at Emerson Dr. & St. Johns Heritage Pkwy, Palm Bay, FL



FOR SALE:

Call For Pricing Guidance



NO WARRANTY OR REPRESENTATION, EXPRESS OR IMPLIED, IS MADE AS TO THE ACCURACY OF THE INFORMATION CONTAINED HEREIN, AND THE SAME IS SUBMITTED SUBJECT TO ERRORS, OMISSIONS, CHANGE OF PRICE, RENTAL OR OTHER CONDITIONS, PRIOR SALE, LEASE OR FINANCING, OR WITHDRAWAL WITHOUT NOTICE, AND OF ANY SPECIAL LISTING CONDITIONS IMPOSED BY OUR PRINCIPALS NO WARRANTIES OR REPRESENTATIONS ARE MADE AS TO THE CONDITION OF THE PROPERTY OR ANY HAZARDS CONTAINED THEREIN ARE ANY TO BE IMPLIED.