

OFFICE BUILDING FOR SALE

1,410 sf
.25± ACRES

SALE PRICE:
\$194,900



ZONING: C-1
Neighborhood Commercial
City of Melbourne

PROPERTY FEATURES:

- » Commercial Office Building
- » Built-out office space
- » 3 public entrances (1 ramp)
- » 2 private entrances
- » Building signage with lighting
- » Hurricane shutters
- » Ample parking (*client parking in front and employee parking in rear*)
- » Large flag pole
- » Well maintained property with lush landscaping
- » Part of office space can be leased out for additional income

LOCATION:

- » Minutes from Holmes Regional Medical Center
- » Center of Melbourne's medical community
- » SE corner of E. Hibiscus & Pine St.
- » Midway between US 1 and Babcock St.
- » Access via Hibiscus and Pine St.



Jeffery T. Robison, Broker

(321) 722-0707 x13

(877) 722-0707 x13

Jeff@TeamLBR.com



LIGHTLE BECKNER ROBISON
INCORPORATED
COMMERCIAL REAL ESTATE SERVICES

Brandon McGuire

Retail Properties

(321) 722-0707 x16

Brandon@TeamLBR.com

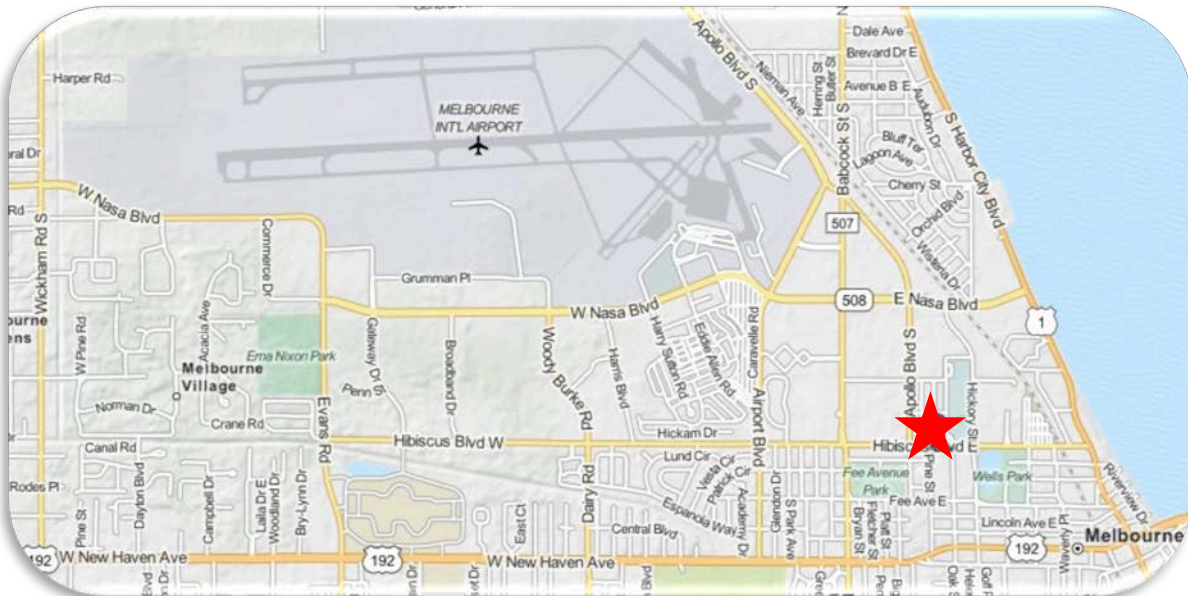
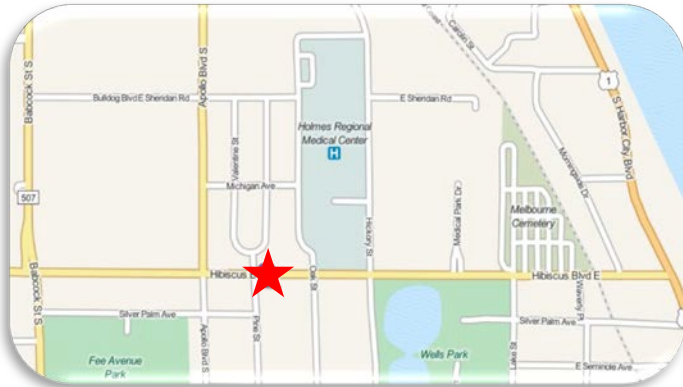
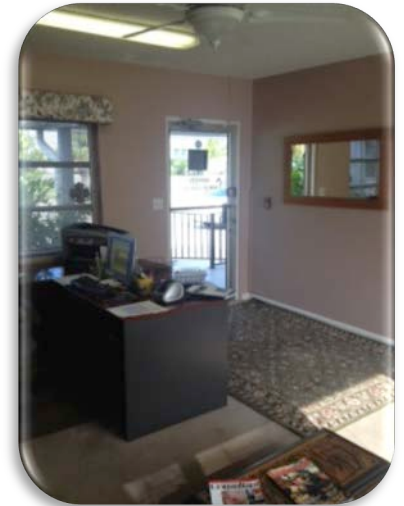
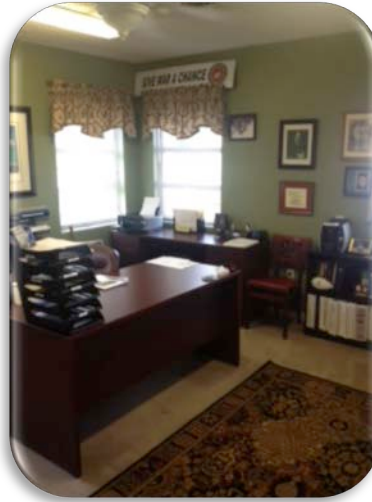
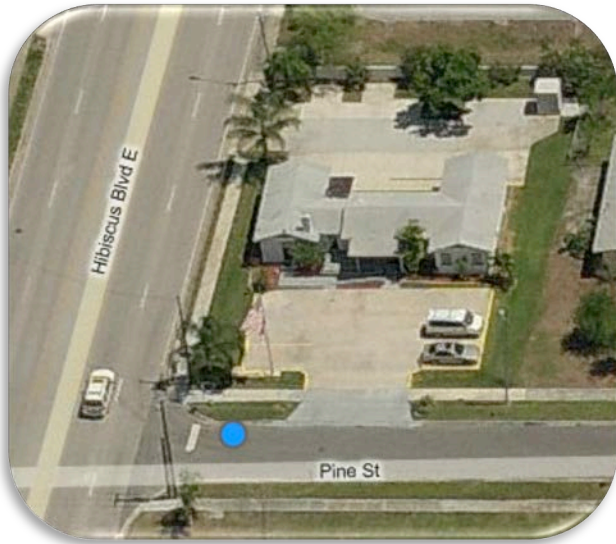
www.TeamLBR.com

© Lightle Beckner Robison, Inc.
All Rights Reserved

1398 South Babcock Street · Melbourne, Florida 32901 · (321) 722-0581 fax

Information contained herein has been obtained from others and considered to be reliable;
However, a purchaser or lessee is expected to verify all information to his/her own satisfaction.

**HIBISCUS BLVD. & PINE ST. (SE Corner)
MELBOURNE, FL 32901**



Jeffery T. Robison, Broker

(321) 722-0707 x13

(877) 722-0707 x13

Jeff@TeamLBR.com



LIGHTLE BECKNER ROBISON
INCORPORATED

COMMERCIAL REAL ESTATE SERVICES

Brandon McGuire

Retail Properties

(321) 722-0707 x16

Brandon@TeamLBR.com

www.TeamLBR.com

© Lightle Beckner Robison, Inc.
All Rights Reserved

1398 South Babcock Street · Melbourne, Florida 32901 · (321) 722-0581 fax

Information contained herein has been obtained from others and considered to be reliable;
However, a purchaser or lessee is expected to verify all information to his/her own satisfaction.