

2,250 SF Warehouse Condo with Yard Space

1501 SE Decker Ave, Stuart, FL 34994

NAI Southcoast



CLOSE TO MAJOR TRANSPORTATION

Presented by

Nikolaus M. Schroth, CCIM
Principal | Broker Associate
+1 772 286 6292
nikschroth@naisouthcoast.com
www.naisouthcoast.com

J. Jeffery Allman, Jr.
Sales Associate
+1 772 286-6292 c +1 772 283 1555
jeff@naisouthcoast.com
www.naisouthcoast.com

James McKinney
Sales Associate
+1 772 349 3414
jamesmckinney@naisouthcoast.com
www.naisouthcoast.com

FOR SALE:
\$699,000

2,250 SF Warehouse Condo with Yard Space

1501 SE Decker Ave, Stuart, FL 34994

Property Details

Location:	1501 SE Decker Ave, Stuart, FL 34994
Jurisdiction:	Stuart
Available Unit Sizes:	2,250 SF
Available Lot Space:	0.189 Acres
Zoning:	Warehouse Industrial
Unit Size(s):	522 & 523 - 2,250 SF
Utilities:	Martin County
Property Class:	Industrial Condo
Monthly HOA Dues:	\$245.57 per unit



Property Overview

This exceptional property offers you 2,250 square feet of flexible warehouse condo space, combined with 0.189 Acres of additional storage lot area. This unique combination blends the convenience of a warehouse condominium with the added utility of extensive yard space, providing a setup rarely found in industrial condominiums.

With the inclusion of the yard space, this property significantly enhances your operational capabilities, offering you a multifaceted space that supports a wide range of industrial and storage needs. This unique feature increases the property's overall appeal, making it a highly versatile and functional choice for your business

Immediate Occupancy Available



2,250 SF Warehouse Condo with Yard Space

1501 SE Decker Ave, Stuart, FL 34994

BUILDING E
Units 522 & 523: 2,250 SF

STORAGE LOT
Total Available: 0.189 Acres

SE FEDERAL HWY
AADT 34,000

SE DECKER AVE

SE DIXIE HWY

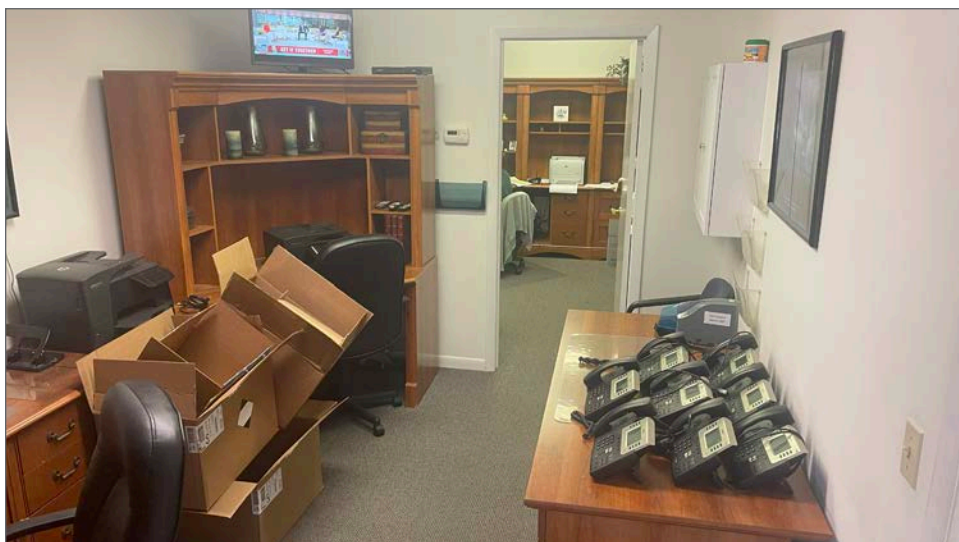
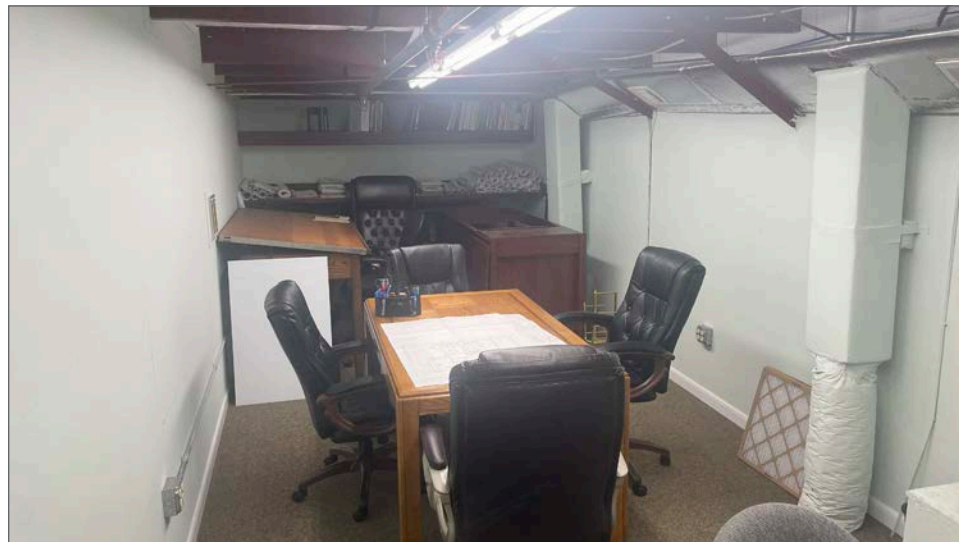
Unit	Size
522 & 523	2,250 SF
Storage Lot	0.189 Acres

2,250 SF Warehouse Condo with Yard Space

1501 SE Decker Ave, Stuart, FL 34994

Building E

Units 522 & 523: 2,250 SF



2,250 SF Warehouse Condo with Yard Space

1501 SE Decker Ave, Stuart, FL 34994

0.189 Acre Storage Yard



2,250 SF Warehouse Condo with Yard Space

1501 SE Decker Ave, Stuart, FL 34994

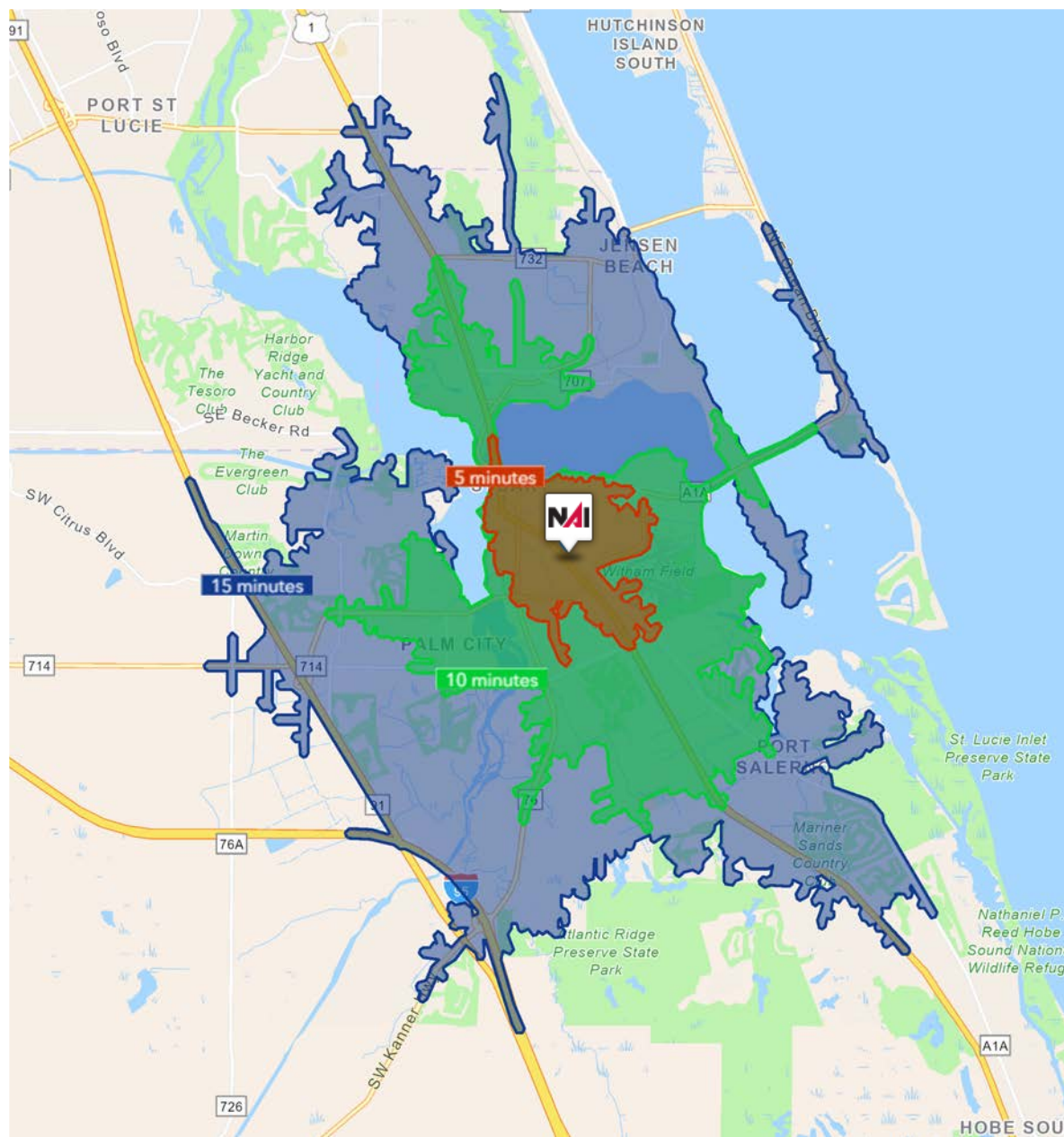
Satellite Image



2,250 SF Warehouse Condo with Yard Space

1501 SE Decker Ave, Stuart, FL 34994

Drive Time

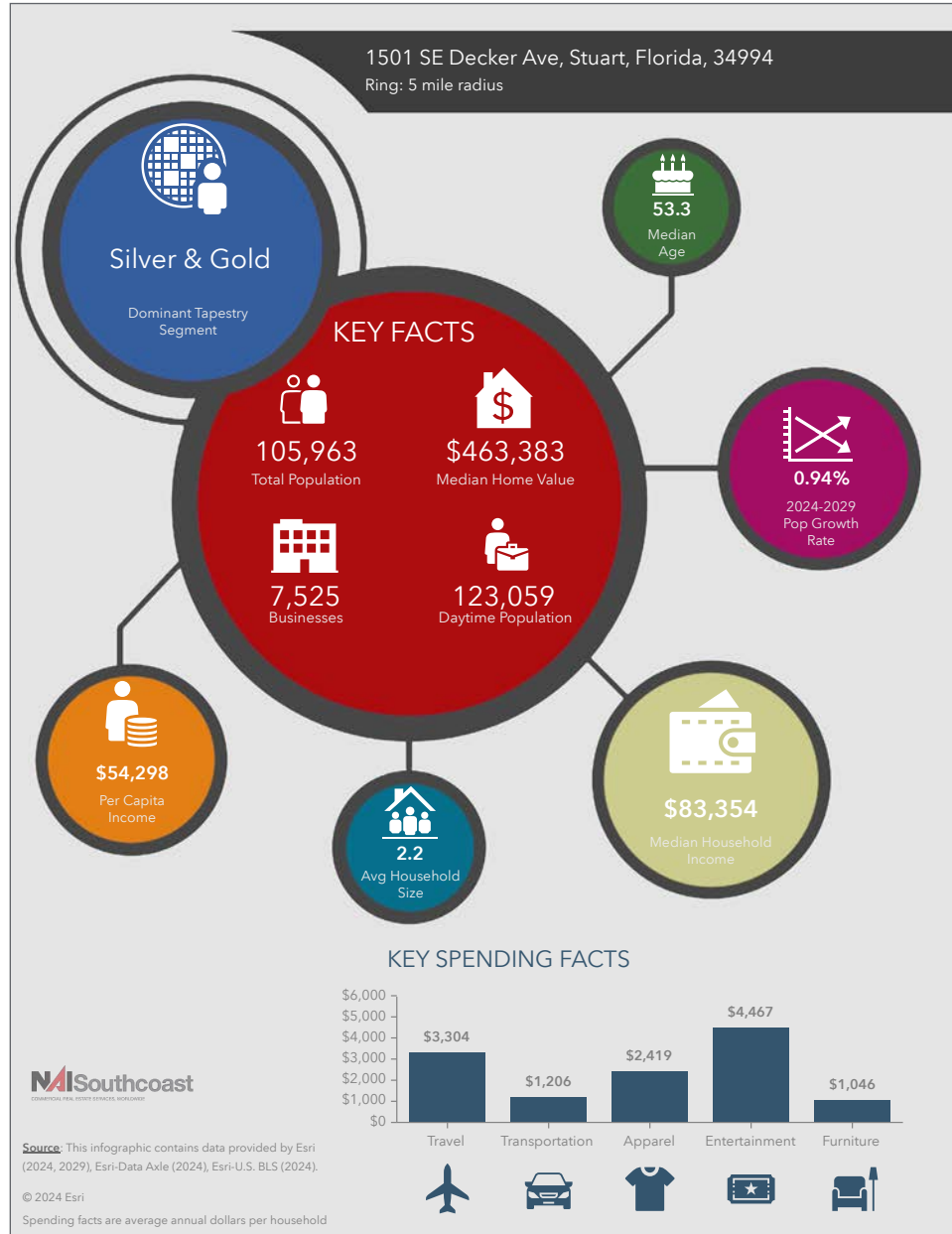


5 Minutes	10 Minutes	15 Minutes
8,406 2010 Population	41,404 2010 Population	93,784 2010 Population
9,643 2024 Population	46,328 2024 Population	105,495 2024 Population
14.7% 2010-2024 Population Growth	11.8% 2010-2024 Population Growth	12.4% 2010-2024 Population Growth
0.74% 2024-2029 (Annual) Est. Population Growth	0.75% 2024-2029 (Annual) Est. Population Growth	0.50% 2024-2029 (Annual) Est. Population Growth
48.3 2024 Median Age	52.2 2024 Median Age	53.7 2024 Median Age
\$87,952 Average Household Income	\$101,356 Average Household Income	\$117,587 Average Household Income
41.5% Percentage with Associates Degree or Better	45.0% Percentage with Associates Degree or Better	49.5% Percentage with Associates Degree or Better
56.4% Percentage in White Collar Profession	55.6% Percentage in White Collar Profession	62.2% Percentage in White Collar Profession

2,250 SF Warehouse Condo with Yard Space

1501 SE Decker Ave, Stuart, FL 34994

2024 Demographics



Population

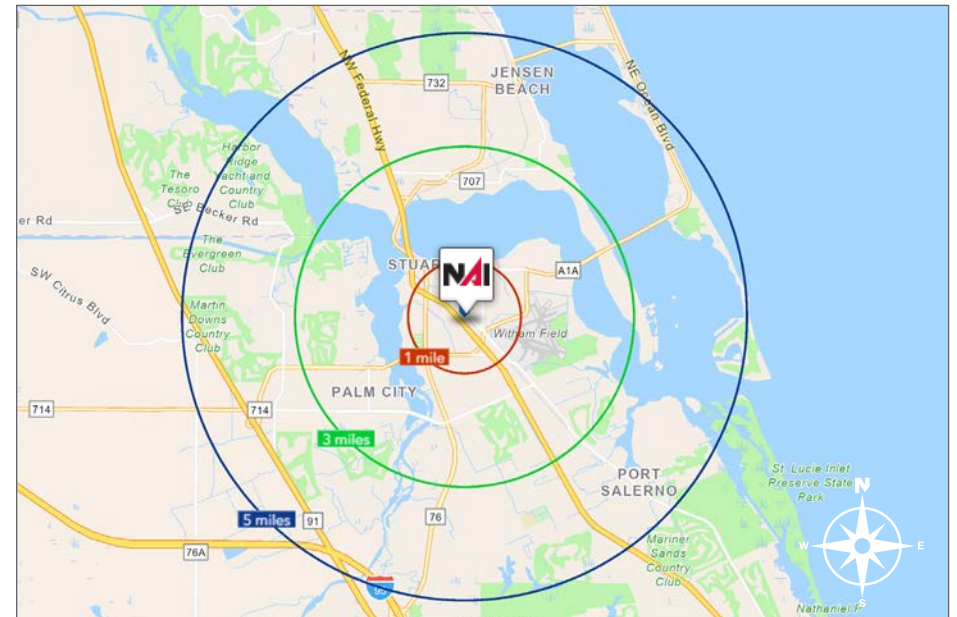
- 1 Mile: 8,907
- 3 Mile: 50,710
- 5 Mile: 105,963

Average Household Income

- 1 Mile: \$79,030
- 3 Mile: \$107,727
- 5 Mile: \$121,699

Median Age

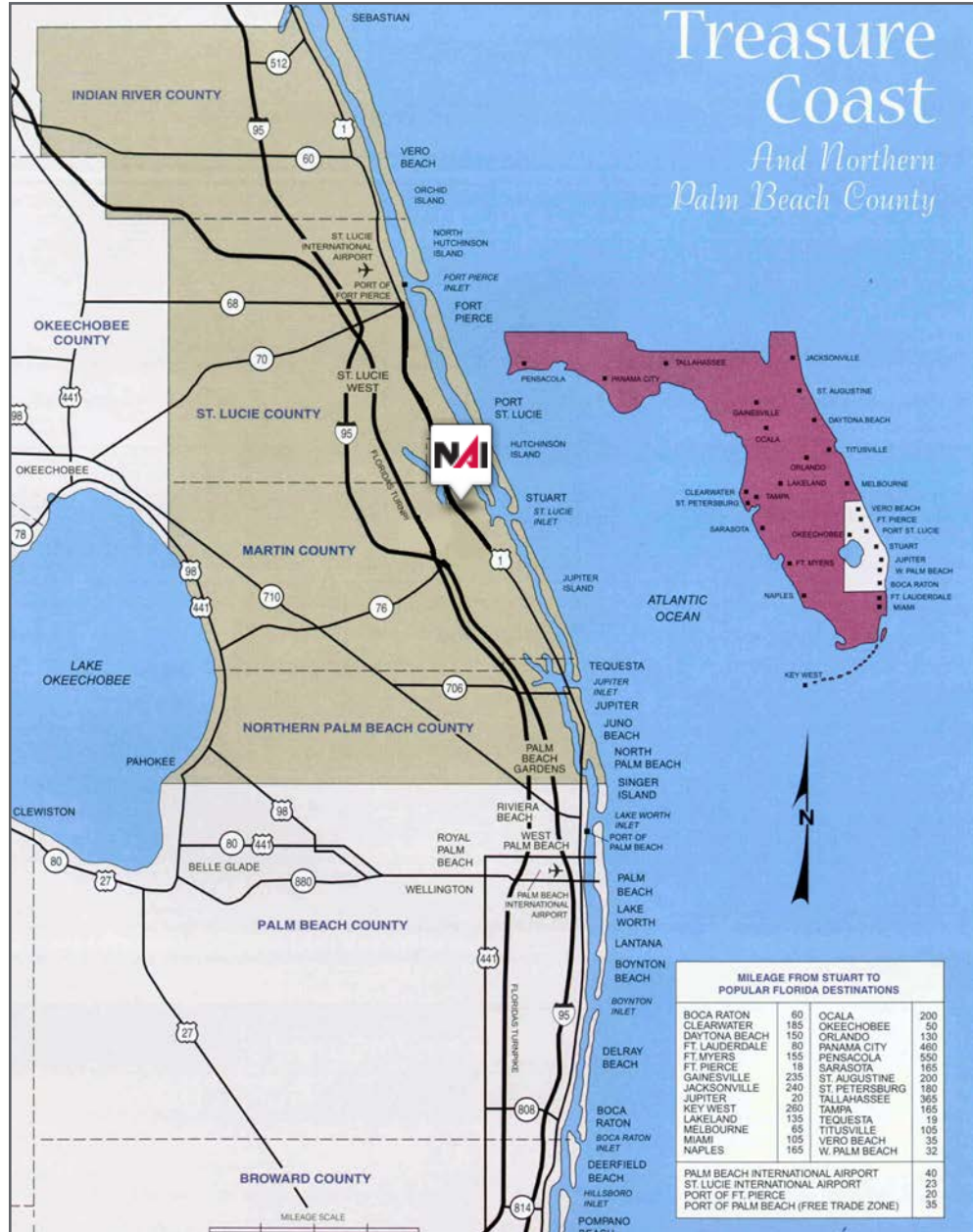
- 1 Mile: 48.5
- 3 Mile: 53.5
- 5 Mile: 53.3



2,250 SF Warehouse Condo with Yard Space

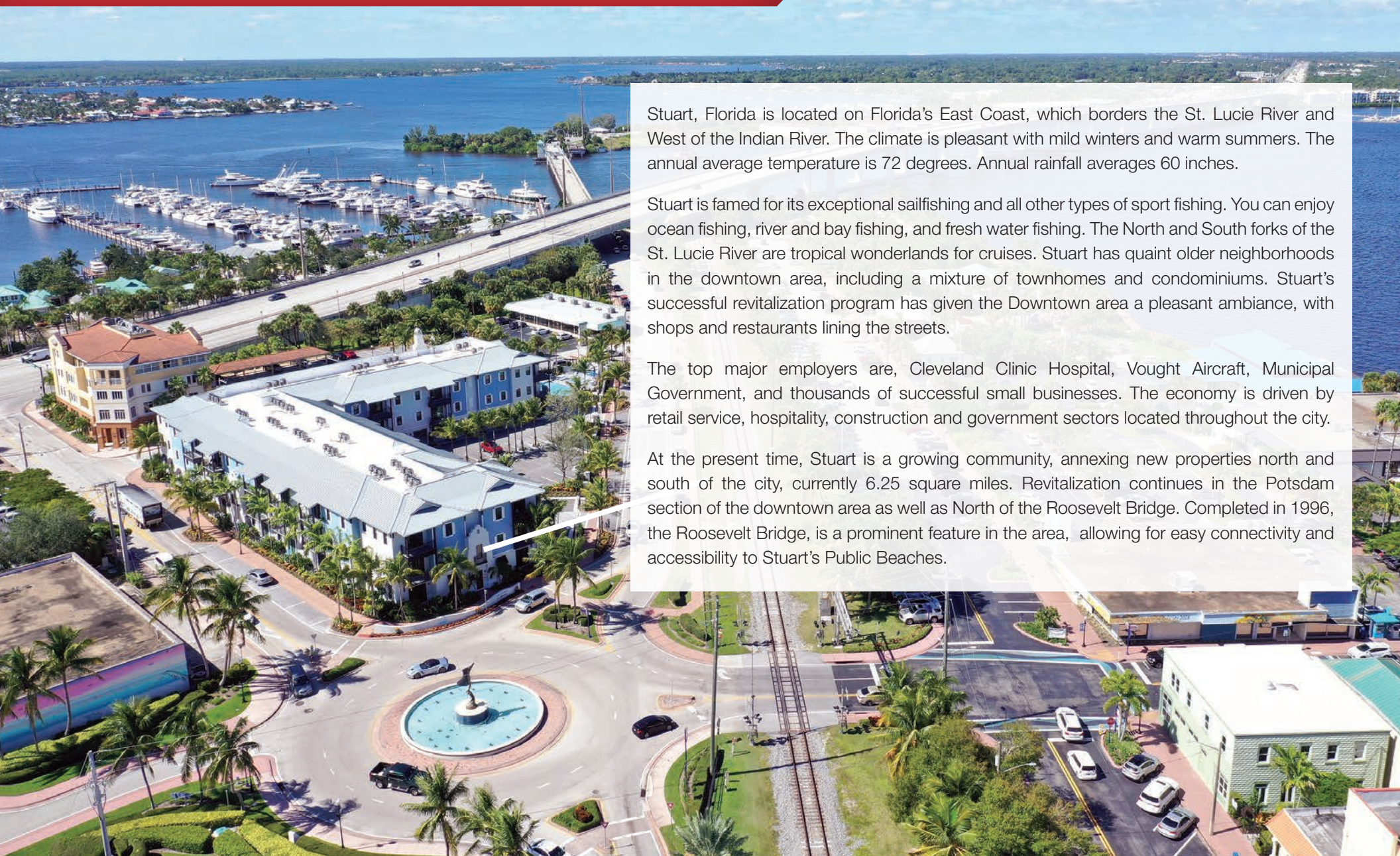
1501 SE Decker Ave, Stuart, FL 34994

Area Maps



City Overview

City of Stuart, Florida



Stuart, Florida is located on Florida's East Coast, which borders the St. Lucie River and West of the Indian River. The climate is pleasant with mild winters and warm summers. The annual average temperature is 72 degrees. Annual rainfall averages 60 inches.

Stuart is famed for its exceptional sailfishing and all other types of sport fishing. You can enjoy ocean fishing, river and bay fishing, and fresh water fishing. The North and South forks of the St. Lucie River are tropical wonderlands for cruises. Stuart has quaint older neighborhoods in the downtown area, including a mixture of townhomes and condominiums. Stuart's successful revitalization program has given the Downtown area a pleasant ambiance, with shops and restaurants lining the streets.

The top major employers are, Cleveland Clinic Hospital, Vought Aircraft, Municipal Government, and thousands of successful small businesses. The economy is driven by retail service, hospitality, construction and government sectors located throughout the city.

At the present time, Stuart is a growing community, annexing new properties north and south of the city, currently 6.25 square miles. Revitalization continues in the Potsdam section of the downtown area as well as North of the Roosevelt Bridge. Completed in 1996, the Roosevelt Bridge, is a prominent feature in the area, allowing for easy connectivity and accessibility to Stuart's Public Beaches.

County Overview

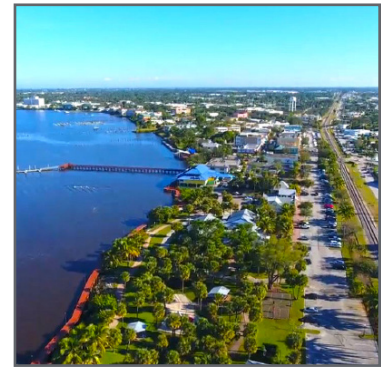
Martin County, Florida

The cities that make up Martin County include Jensen Beach/Rio, Stuart/Sewall's Point, Hutchinson Island, Hobe Sound, Jupiter/ Tequesta, Palm City, Port Salerno and Indiantown. Martin County is a wonderful place to visit and live, with beaches, golf, fishing and boating. The County boasts arts, quaint downtowns with shops, gourmet dining, galleries, museums, historic places, festivals and more.

Martin County is for...

The golf enthusiast... Martin County is home to over 35 world-class golf courses all within a 15-mile radius. The sun worshiper... The County offers its visitors and residents alike some of the finest beaches on the east coast. The discriminating arts shopper... More than 20 galleries participate in a monthly First Thursday gallery night. Many of these galleries are in the historic downtowns of Stuart, Jensen Beach, Port Salerno and Hobe Sound. The music lover... The historic Lyric Theatre offers a wide-array of fist class talent nearly 300 days a year... This acoustically amazing theatre features concerts for all music lovers, from classical to rock and roll, and theatrical performances by local and national talent.

Mark your calendars for a plethora of events to look forward to in Martin County, Florida. The Stuart Air Show, Stuart Boat Show, ArtsFest, and the Martin County Fair are just some of the many events taking place throughout the year. The Treasure Coast Children's Museum, located at Indian Riverside Park, is a great place for kids and families, offering a water play area, fishing, and a riverfront view. Often, there are events in the park including concerts, orchid shows, and more. Indian Riverside Park also features the Maritime and Yachting Museum. Hutchinson Island is home to the Elliott Museum which celebrates the genius of innovation, creativity and the historical events of Martin County. Named after the prolific inventor Sterling Elliott, the museum hosts permanent exhibits showcasing Model A Trucks, early transportation, the history of Stuart and its surrounding regions, and baseball memorabilia. For the scientifically minded and curious kids, the Florida Oceanographic Coastal Center offers fun opportunities to learn about our local ecosystem.





Nikolaus M. Schroth, CCIM

Principal | Broker Associate
+1 772 286 6292
nikschroth@naisouthcoast.com



J. Jeffery Allman, Jr.

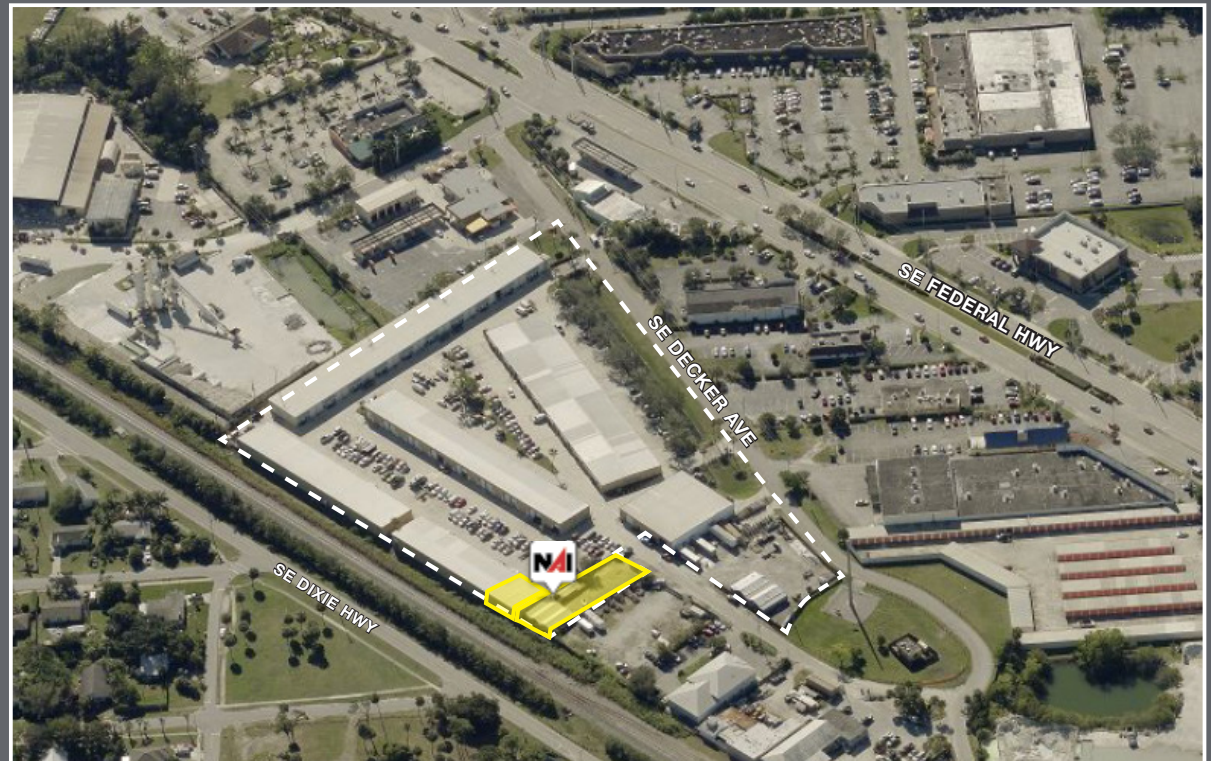
Sales Associate
+1 772 286-6292 c +1 772 283 1555
jeff@naisouthcoast.com



James McKinney

Sales Associate
+1 772 349 3414
jamesmckinney@naisouthcoast.com

2,250 SF Warehouse Condo with Yard Space 1501 SE Decker Ave, Stuart, FL 34994



FOR SALE:
\$699,000