



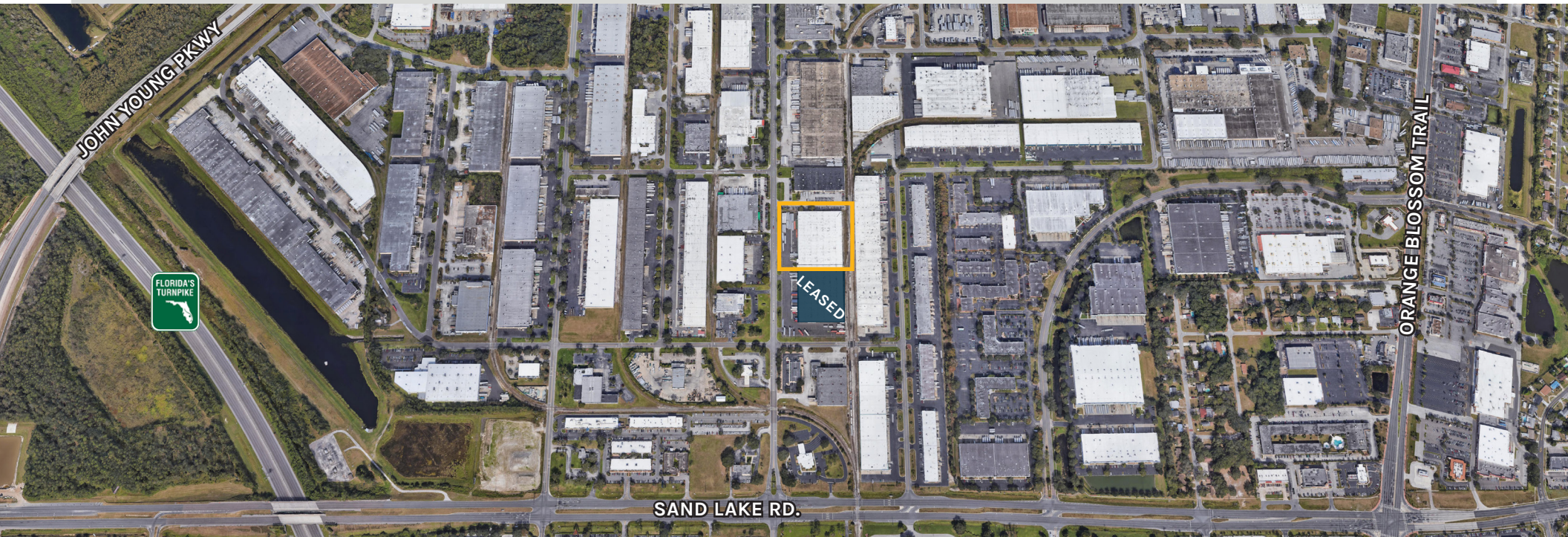
ARES  
INDUSTRIAL  
MANAGEMENT

NEW SPEC OFFICE  
COMPLETE!

# 7575 CHANCELLOR DRIVE

ORLANDO, FL 32809

FOR LEASE | 100,800 SQ FT | Class A Warehouse Facility



**FOUNDRY**  
COMMERCIAL

JUSTIN RUBY, SIOR, CCIM

Partner  
407-865-0311

JOEY WOODMAN

Vice President  
407-748-5888

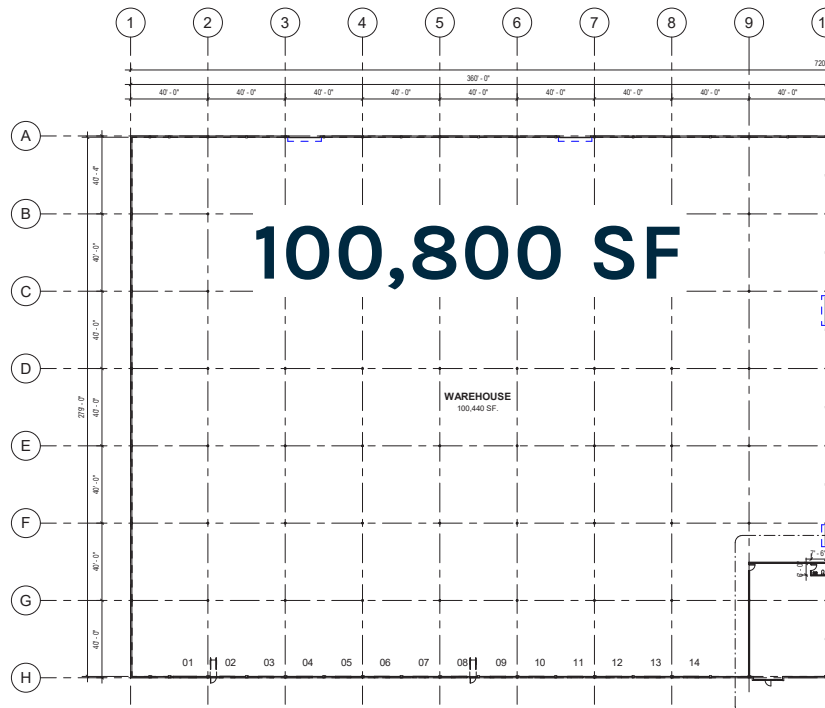
OWNED BY



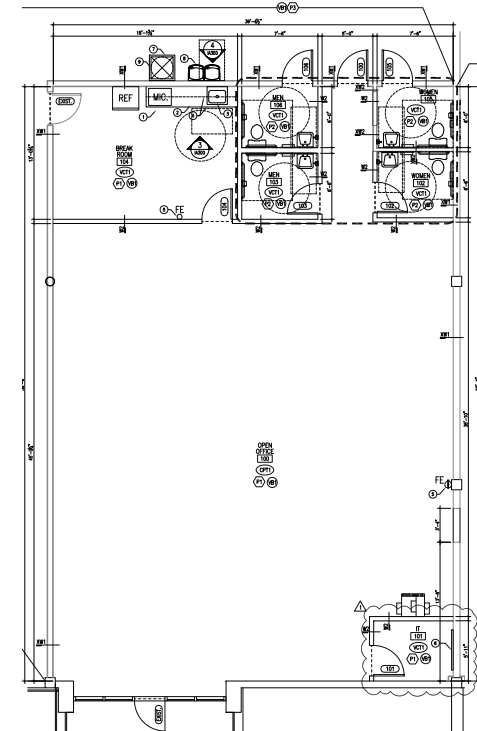
ARES  
INDUSTRIAL  
MANAGEMENT

# Property FEATURES

- New Spec Office Complete!
- 24' clear height
- 40' x 40' column spacing
- 3 phase, 480V, 1400 amps of power
- 35 auto parking spaces
- 10 trailer parking spaces
- Fully fenced property
- Wet Sprinkler (Non-ESFR)
- I-3 Zoning
- Orlando Central Park
- 13 Dock High Doors (5 pit-levelers, 8 EOD's)



## Spec Office Plan

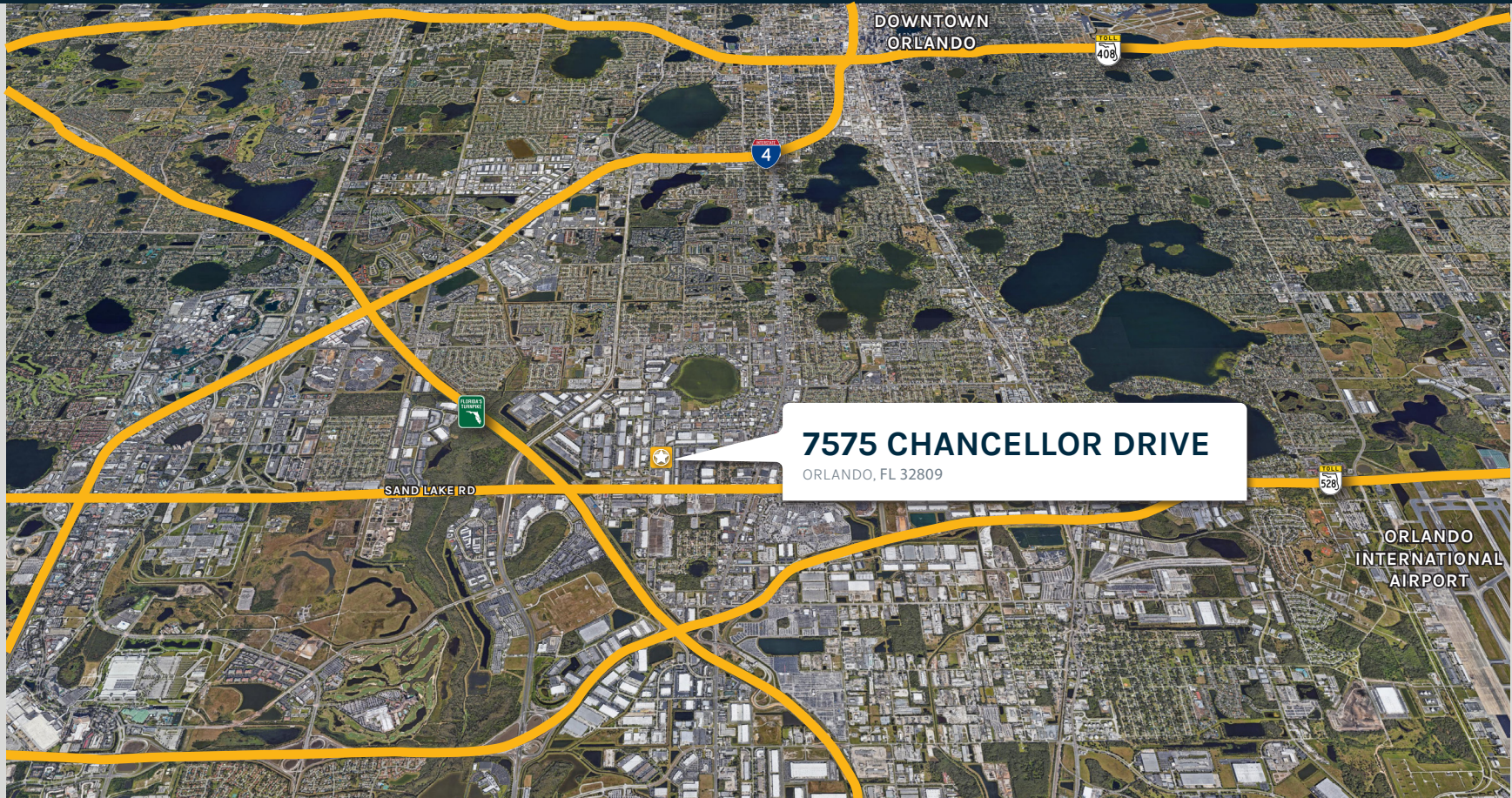


ARES  
INDUSTRIAL  
MANAGEMENT



# Location HIGHLIGHTS

- Located in Orlando Central Park
- Convenient access to Orange Blossom Trail (441)
- 2 Miles to Turnpike and SR-528
- 3.9 Miles to I-4



ARES  
INDUSTRIAL  
MANAGEMENT



# Property PHOTOS





## ABOUT ARES MANAGEMENT CORPORATION

Ares Management Corporation (NYSE: ARES) is a leading global alternative investment manager offering clients complementary primary and secondary investment solutions across the credit, private equity, real estate and infrastructure asset classes. We seek to provide flexible capital to support businesses and create value for our stakeholders and within our communities. By collaborating across our investment groups, we aim to generate consistent and attractive investment returns throughout market cycles. For more information, please visit [www.aresmgmt.com](http://www.aresmgmt.com).



**FOUNDRY**  
COMMERCIAL

**JUSTIN RUBY, SIOR, CCIM**  
Partner  
407-865-0311

**JOEY WOODMAN**  
Vice President  
407-748-5888



**ARES**  
**INDUSTRIAL**  
**MANAGEMENT**