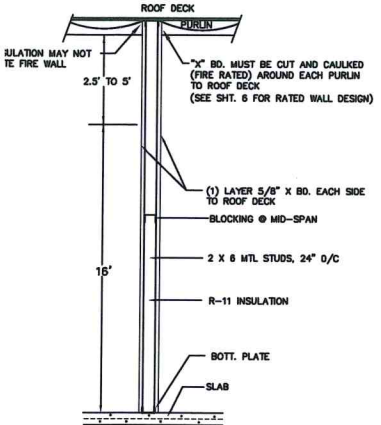


U	STEEL 26 GA. O.H. DOOR FOOT BOLT	1
F	17'-4" X 14' STEEL 26 GA. O.H. DOOR FOOT BOLT	1

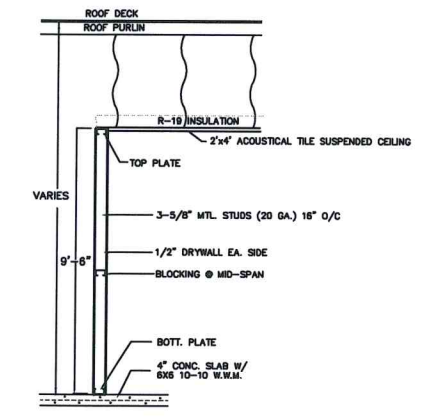
- 1) NO DEAD BOLTS ON EXIT DOORS
- 2) WIND LOAD DESIGN ON O.H. DOORS MUST WITHSTAND 33 PSF FOR 10 SECONDS
- 3) ALL STOREFRONT GLASS W/ 18" FROM FINISHED GRADE OR HAZARDOUS LOCATIONS MUST BE TEMPERED.
- 4) ALL REQUIRED EXIST DOORS SHALL BE OPENABLE FROM THE INSIDE W/O THE USE OF A KEY TOOL, FLUSH BOLTS OR SURFACE BOLTS.

WIND EXPOSURE B  
INTERNAL PRESSURE COEFF. 0.18 (ASCE 7-88, TAB)

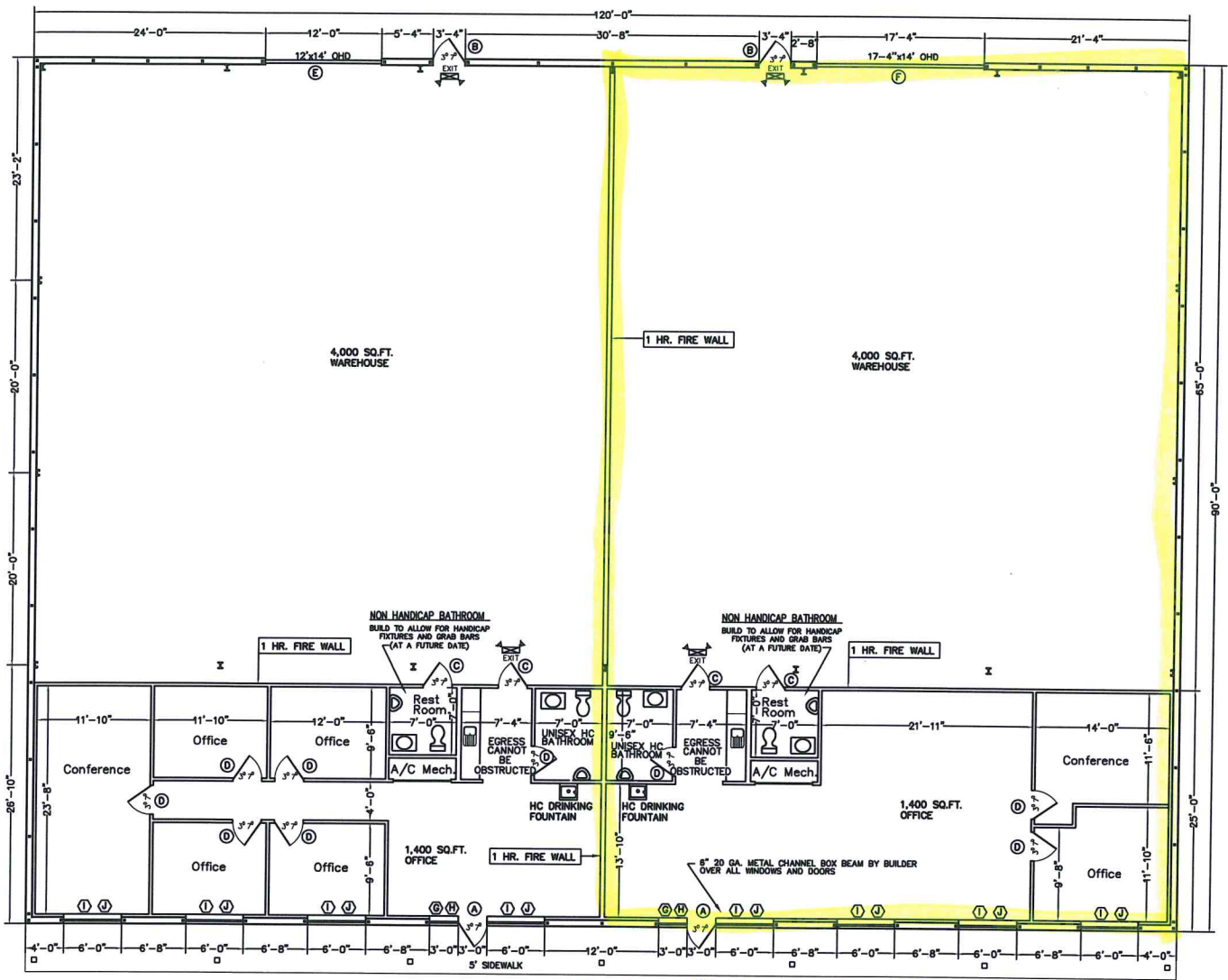
ROOM FINISH SCHEDULE										
NO.	ROOM NAME	FLOOR	BASE	WALLS			CEILING		REMARKS	
				N	S	E	W	MTL		HOTI
8	OFFICES	CARPET	VINYL	GYP	GYP	GYP	GYP	DRYWALL	2'	ALL FINISHES TO MEET CLASS "C" FIRE RATING. (FLAME SPREAD 75-200 SMOKE DEVELOPED 0-450)
8	BATHROOMS	TILE	VINYL	GYP	GYP	GYP	GYP	DRYWALL	2'	



**1 HR. FIREWALL**  
WP 1200

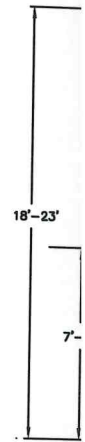


**INTERIOR PARTITION**

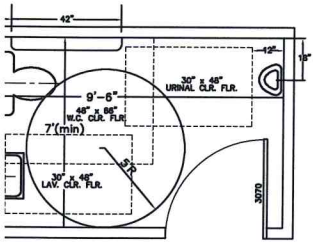


*KENNEY POINT*

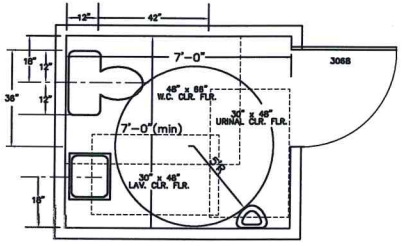
*South*  
↑



**TYP.**  
OFFICE WAREHOUSE



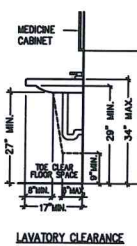
**UNISEX HANDICAP BATHROOM**  
SIDE ENTRY



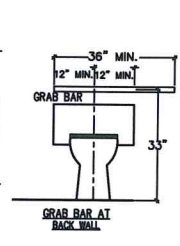
**NON HANDICAP BATHROOM**  
BUILT TO ALLOW FOR HANDICAP



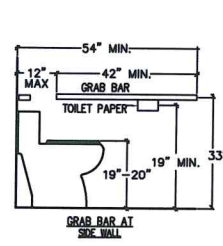
**WALL HUNG URINAL**  
ELONGATED RIM



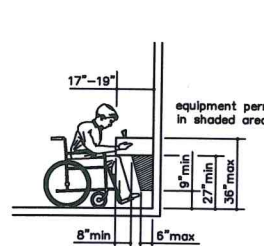
**LAVATORY CLEARANCE**



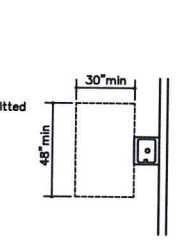
**GRAB BAR AT**  
BACK WALL



**GRAB BAR AT**  
SIDE WALL



**Spout Height and**  
equipment permitted in shaded area



**Free-Standing**  
Fountain or Cooler

8" SQUARE STANDARD STEEL TUBE BY BLDG. MANUF.

65 IN CELL ON FLOOR 8" O/C MIN

SEE FOUNDATION SIZE AND REIN

**TYP. OFF**  
N.T.S.