

**Hunt Industrial**



# FLEX / WAREHOUSE SPACE FOR LEASE

15430 County Road 565A, Groveland, FL 34736

Contact: Bryan Richardson  
Sales & Leasing Associate

E: Bryan@FCPG.com  
P: 407.872.0177 ext. 137

Contact: Ben Kuykendall  
Sales & Leasing Associate

E: Ben@FCPG.com  
P: 407.872.0177 ext. 131

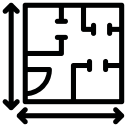
Contact: Dan Van Nada, CCIM  
Vice President of Brokerage Services

E: Dan@FCPG.com  
P: 407.872.0177 ext. 117

**For Lease: \$15.50 - \$16.00 / SF, NNN**

± 900 - 4,800 SF Available

Zoning: M-1, Light Industrial



**VARIED SUITE  
LAYOUTS AVAILABLE**

Suites Feature Grade Level Loading and 12'x14' Roll-Up Doors.  
2 Shared Dock-High Loading/Unloading Bays in the Park

Diverse users within 17-Building, 200,000 SF Small-Bay Industrial  
Park, the largest in South Lake County

Now Under New Ownership: On-Site Management Services,  
Directory Signage and Shared Wifi throughout park

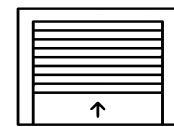
Entire property is fenced and secured with gate code access  
at three separate points across property

Varied suite sizes and features available allowing for high  
degree of flexibility and customization

Ideally Situated near SR 50, Highway 27 and Florida's Turnpike  
for easy access to Greater Central Florida



**SECURE GATED  
PROPERTY**



**12'x14' ROLL-  
UP DOORS**



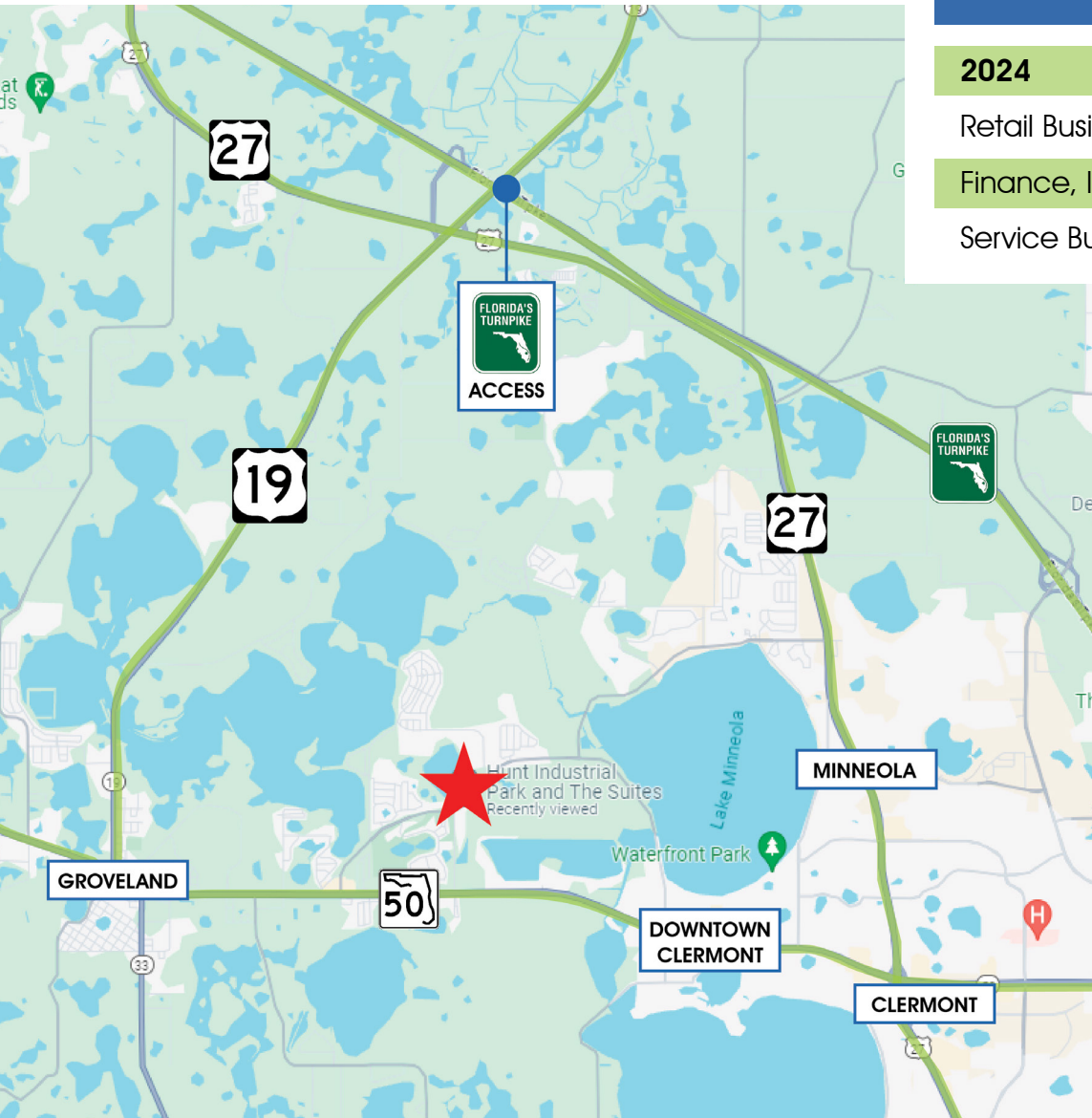
**GRADE-LEVEL  
ACCESS**

615 E. Colonial Dr., Orlando, FL 32803 Phone: 407.872.0209 www.FCPG.com

Information furnished regarding the subject property is believed to be accurate, but no guarantee or representation is made. References to square footage are approximate. This offering is subject to errors, omissions, prior sale or lease or withdrawal without notice. ©2024 First Capital Property Group, Inc., Licensed Real Estate Brokers & Managers.



# LOCATION



## Surrounding Businesses

2024	5 Mins	10 Mins	15 Mins
Retail Businesses	36	259	579
Finance, Insurance, & Real Estate Businesses	11	135	287
Service Businesses	56	578	1,314

## Drive Times & Traffic Counts



2 minutes  
(1 mile)



5 minutes  
(3.2 miles)






9 minutes  
(4.9 miles)



13 minutes  
(7.3 miles)

## DEMOGRAPHICS

2024	 Total Population	 Total Households	 Average HH Income
5 Mins	8,089	2,839	\$121,041
10 Mins	33,085	11,935	\$105,232
15 Mins	89,128	32,036	\$106,341

615 E. Colonial Dr., Orlando, FL 32803 Phone: 407.872.0209 www.FCPG.com

Information furnished regarding the subject property is believed to be accurate, but no guarantee or representation is made. References to square footage are approximate. This offering is subject to errors, omissions, prior sale or lease or withdrawal without notice. ©2024 First Capital Property Group, Inc., Licensed Real Estate Brokers & Managers.





# SITE PLAN



615 E. Colonial Dr., Orlando, FL 32803 Phone: 407.872.0209 www.FCPG.com

Information furnished regarding the subject property is believed to be accurate, but no guarantee or representation is made. References to square footage are approximate. This offering is subject to errors, omissions, prior sale or lease or withdrawal without notice. ©2024 First Capital Property Group, Inc., Licensed Real Estate Brokers & Managers.





# AVAILABILITY

Building	Suite	Square Footage	\$/SF Rate	Availability	Suite Details	Accessibility
1502	C	2,400 SF	\$15.50	Now	1,500 SF Warehouse 900 SF A/C Office	(1) 12'x14' Bay Door Standard Single Door Standard Double Door Entry
1510	C	1,200 SF	\$16.00	Now	914 SF Warehouse 286 SF A/C Office	(1) 12'x14' Bay Door Standard Single Door
1510	I	1,200 SF	\$16.00	Now	1,000 SF Warehouse 200 SF A/C Office	(1) 12'x14' Bay Door (1) Standard Single Door
1510	J	1,200 SF	\$16.00	Now	1,000 SF Warehouse 200 SF A/C Office	(1) 12'x14' Bay Door Standard Single Door
1512	B	2,400 SF	\$15.50	Now	2,024 SF Warehouse 376 SF A/C Office	Drive Through With (2) 12'x14' Bay Doors Standard Single Door Back Entry Door
1516	I/J	2,400 SF	\$15.50	Now	2,032 SF Warehouse 368 SF A/C Office	(2) 12'x14' Bay Door Back Entry Door Storage Above Office
15360	A	4,725 SF	\$15.50	Now	1,680 SF Office Space (Storage above) 3,045 SF Warehouse	Drive Through With (2) 12'x14' Bay Doors Standard Single Door Standard Double Door Entry
15360	G	1,200 SF	\$16.00	Now	1,080 SF Warehouse 120 SF A/C Office	(1) 12'x14' Bay Door Standard Single Door
15380	E	2,100 SF	\$15.50	Now	Store Front with A/C Offices Warehouse with multiple access points	(1) 12'x14' Bay Door Standard Single Door
15390	E	900 SF	\$16.00	Now	200 SF A/C Offices Warehouse with multiple access points	(1) 12'x14' Bay Door Standard Single Door Back Entry Door
15410	E	2,800 SF	\$15.50	Now	Store Front with A/C Offices 600 SF A/C Warehouse	(3) Standard Double Door Entry

■ 615 E. Colonial Dr., Orlando, FL 32803 ■ Phone: 407.872.0209 ■ [www.FCPG.com](http://www.FCPG.com) ■

Information furnished regarding the subject property is believed to be accurate, but no guarantee or representation is made. References to square footage are approximate. This offering is subject to errors, omissions, prior sale or lease or withdrawal without notice. ©2024 First Capital Property Group, Inc., Licensed Real Estate Brokers & Managers.





# SHARED DOCK HIGH BAY

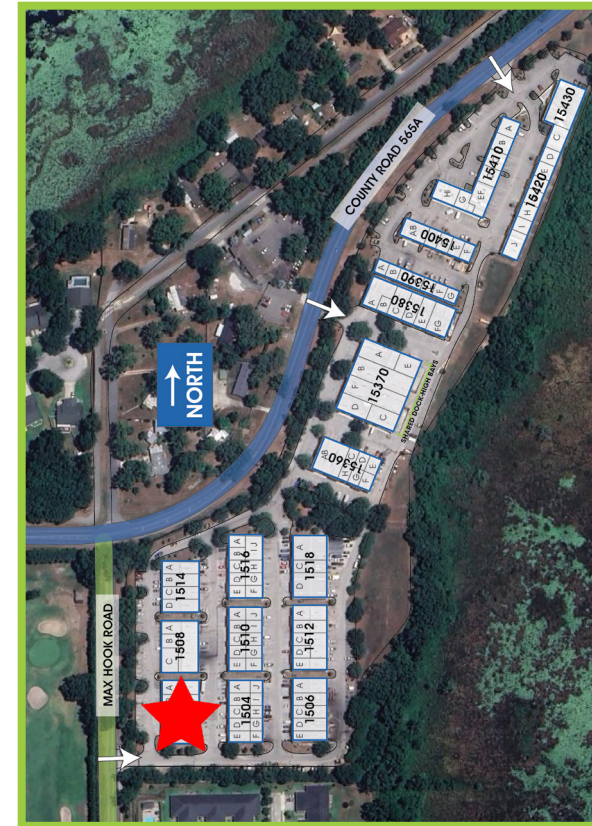
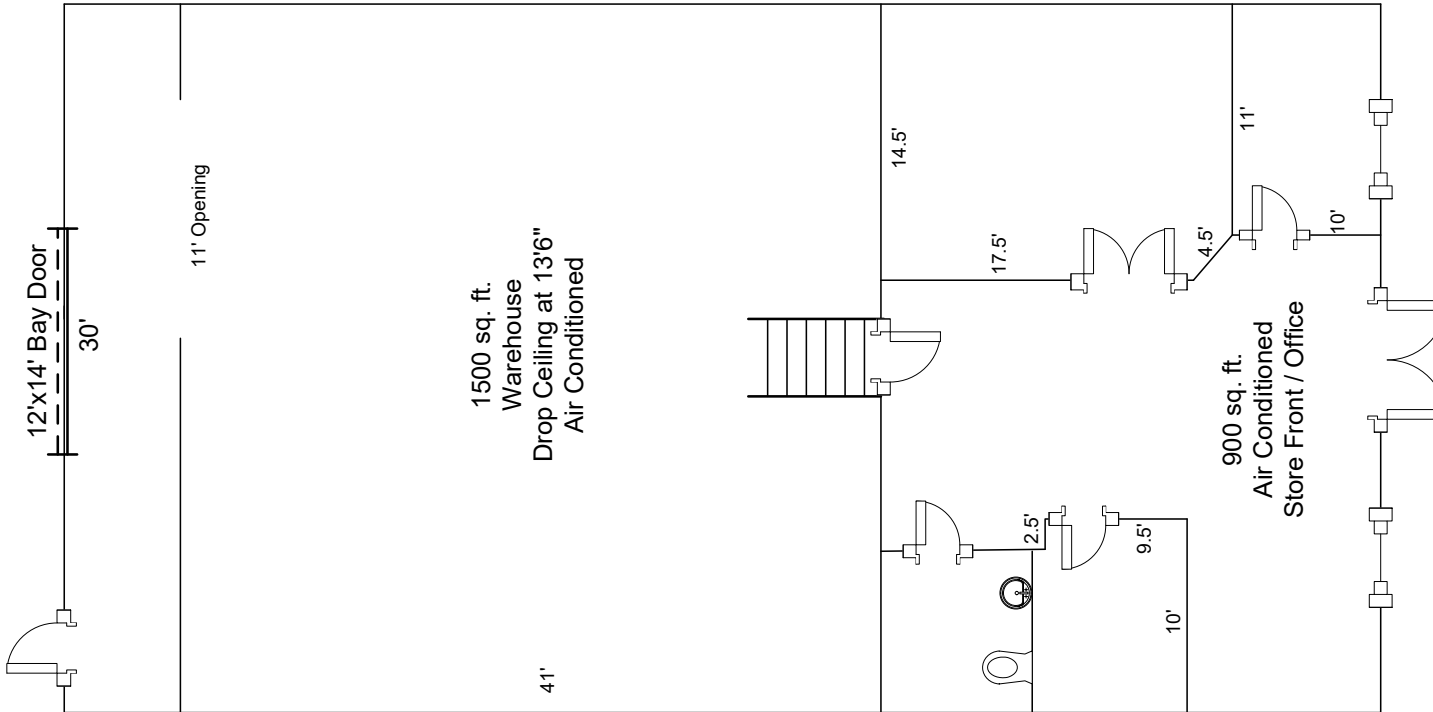


■ 615 E. Colonial Dr., Orlando, FL 32803 ■ Phone: 407.872.0209 ■ [www.FCPG.com](http://www.FCPG.com) ■

Information furnished regarding the subject property is believed to be accurate, but no guarantee or representation is made. References to square footage are approximate. This offering is subject to errors, omissions, prior sale or lease or withdrawal without notice. ©2024 First Capital Property Group, Inc., Licensed Real Estate Brokers & Managers.



# SUITE 1502 C: 2,400 SF



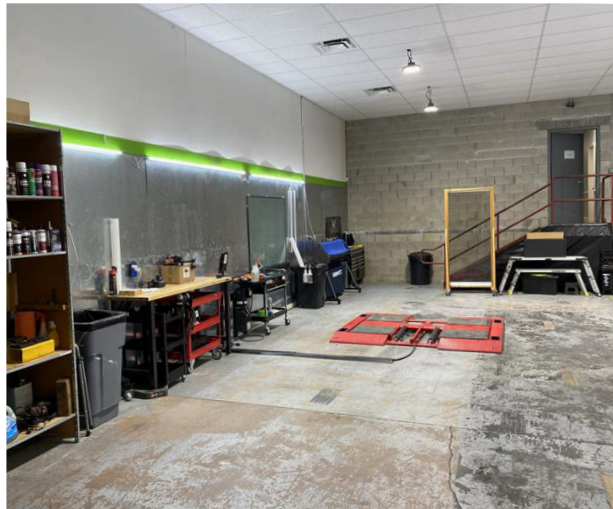
615 E. Colonial Dr., Orlando, FL 32803 Phone: 407.872.0209 www.FCPG.com

Information furnished regarding the subject property is believed to be accurate, but no guarantee or representation is made. References to square footage are approximate. This offering is subject to errors, omissions, prior sale or lease or withdrawal without notice. ©2024 First Capital Property Group, Inc., Licensed Real Estate Brokers & Managers.





# SUITE 1502 C: 2,400 SF

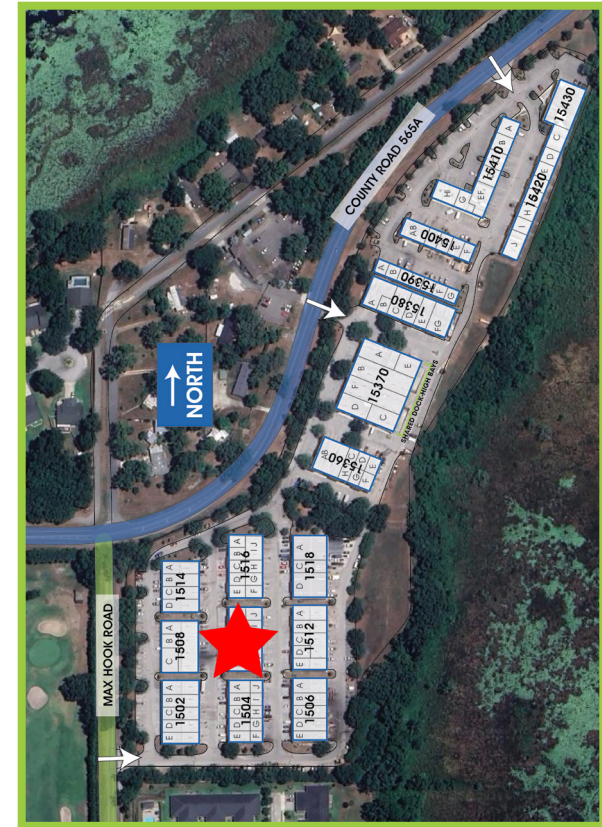
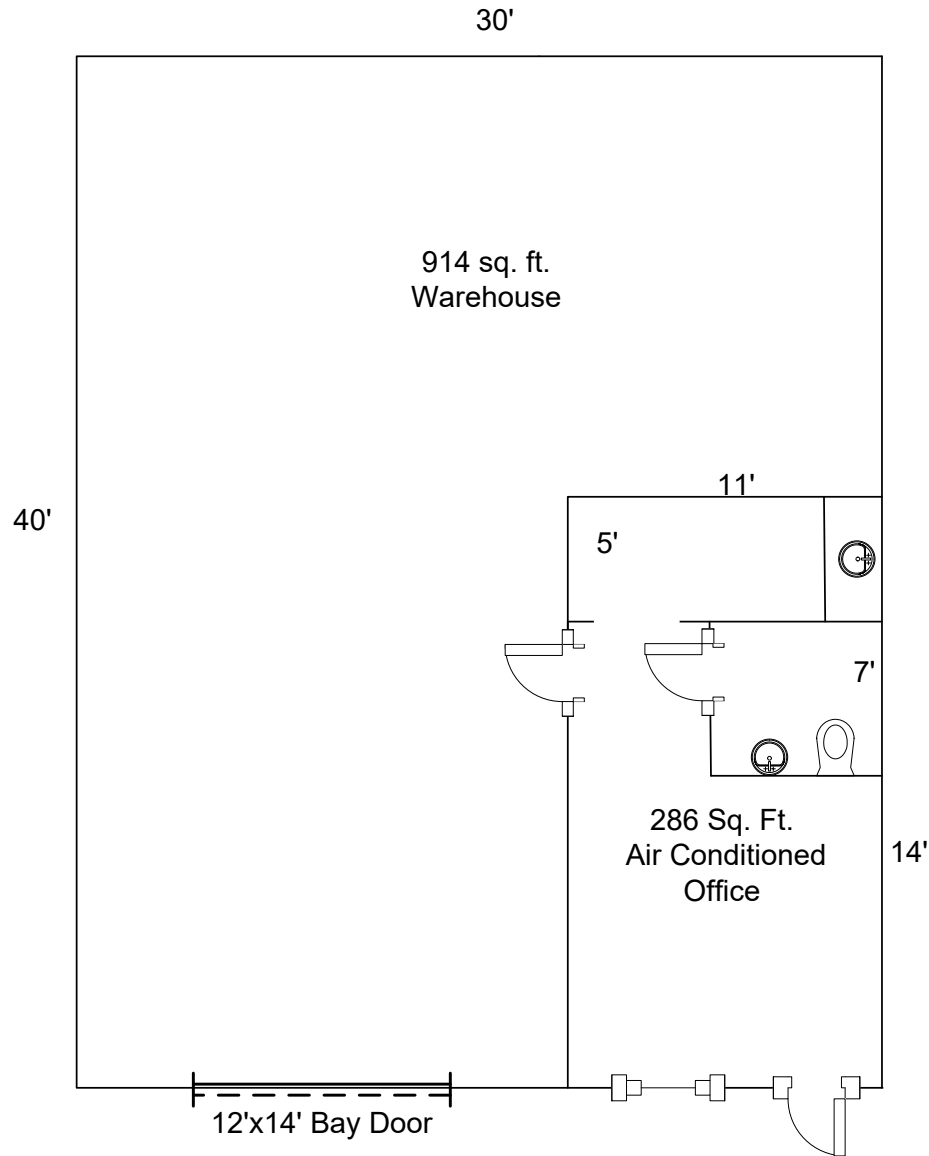


■ 615 E. Colonial Dr., Orlando, FL 32803 ■ Phone: 407.872.0209 ■ [www.FCPG.com](http://www.FCPG.com) ■

Information furnished regarding the subject property is believed to be accurate, but no guarantee or representation is made. References to square footage are approximate. This offering is subject to errors, omissions, prior sale or lease or withdrawal without notice. ©2024 First Capital Property Group, Inc., Licensed Real Estate Brokers & Managers.



# SUITE 1510 C: 1,200 SF



615 E. Colonial Dr., Orlando, FL 32803 Phone: 407.872.0209 www.FCPG.com

Information furnished regarding the subject property is believed to be accurate, but no guarantee or representation is made. References to square footage are approximate. This offering is subject to errors, omissions, prior sale or lease or withdrawal without notice. ©2024 First Capital Property Group, Inc., Licensed Real Estate Brokers & Managers.



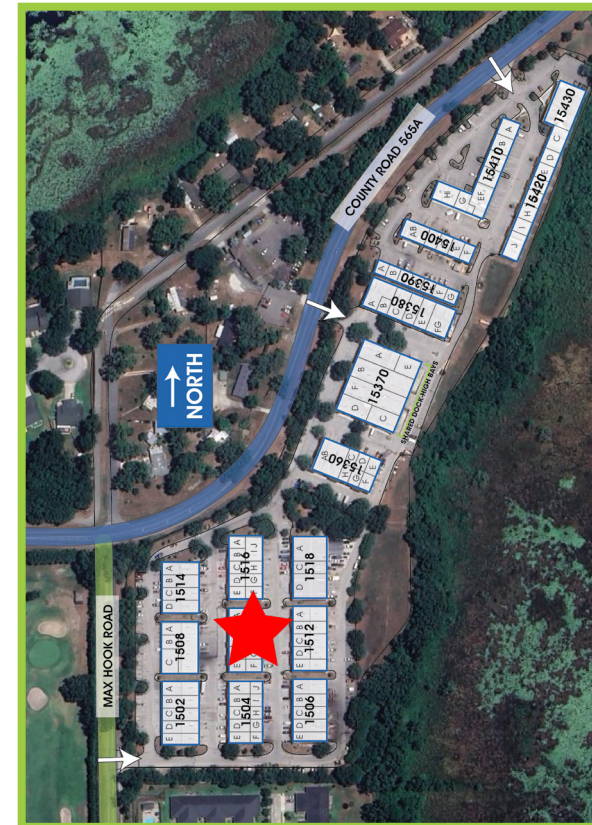
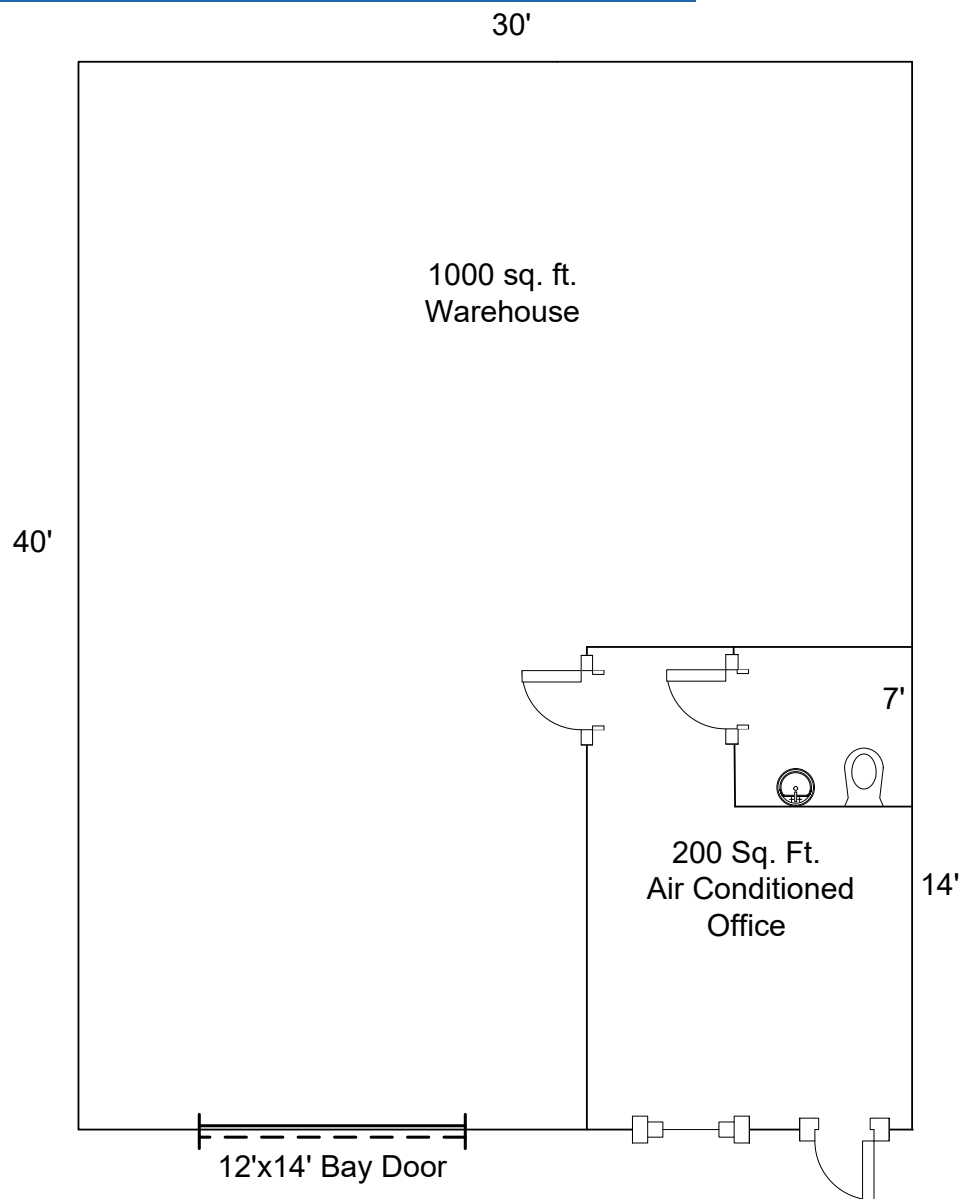
# SUITE 1510 C: 1,200 SF



■ 615 E. Colonial Dr., Orlando, FL 32803 ■ Phone: 407.872.0209 ■ [www.FCPG.com](http://www.FCPG.com) ■

Information furnished regarding the subject property is believed to be accurate, but no guarantee or representation is made. References to square footage are approximate. This offering is subject to errors, omissions, prior sale or lease or withdrawal without notice. ©2024 First Capital Property Group, Inc., Licensed Real Estate Brokers & Managers.

# SUITE 1510 I: 1,200 SF



615 E. Colonial Dr., Orlando, FL 32803 Phone: 407.872.0209 www.FCPG.com

Information furnished regarding the subject property is believed to be accurate, but no guarantee or representation is made. References to square footage are approximate. This offering is subject to errors, omissions, prior sale or lease or withdrawal without notice. ©2024 First Capital Property Group, Inc., Licensed Real Estate Brokers & Managers.



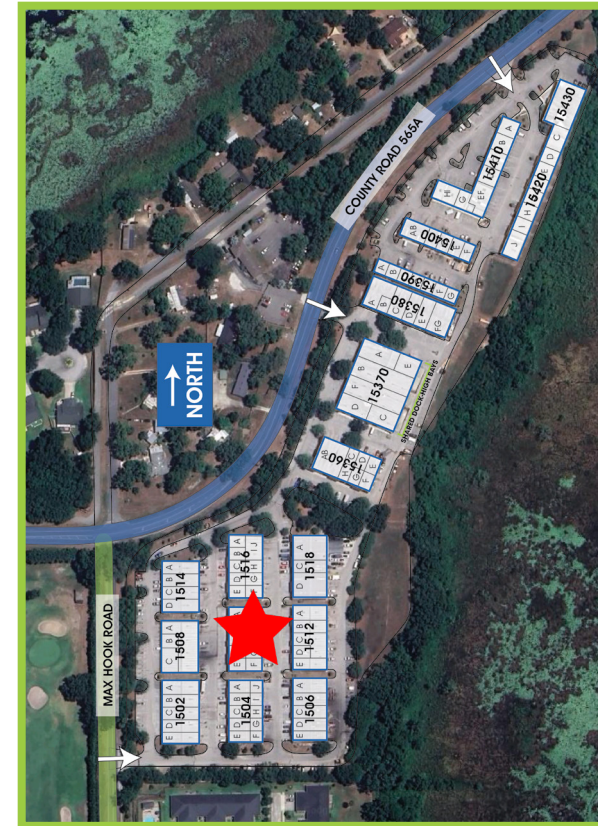
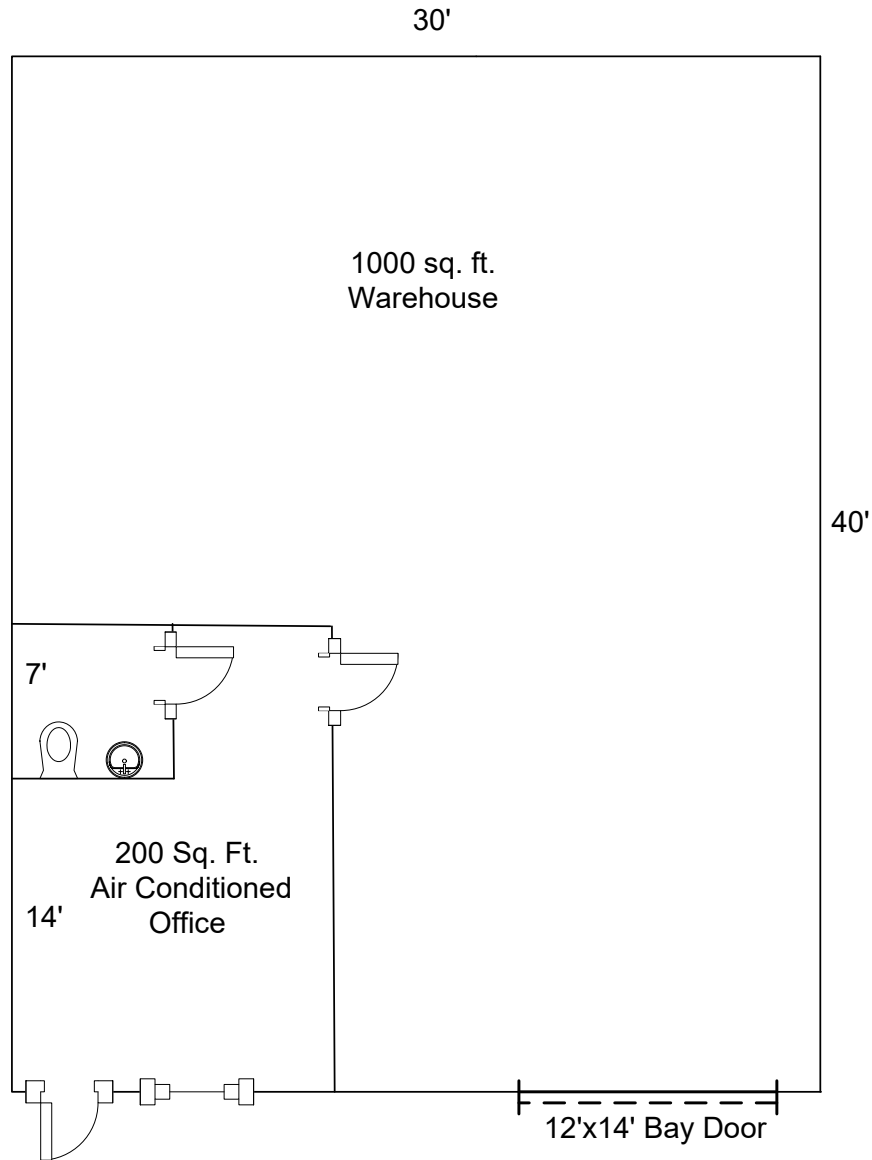
# SUITE 1510 I: 1,200 SF



■ 615 E. Colonial Dr., Orlando, FL 32803 ■ Phone: 407.872.0209 ■ [www.FCPG.com](http://www.FCPG.com) ■

Information furnished regarding the subject property is believed to be accurate, but no guarantee or representation is made. References to square footage are approximate. This offering is subject to errors, omissions, prior sale or lease or withdrawal without notice. ©2024 First Capital Property Group, Inc., Licensed Real Estate Brokers & Managers.

# SUITE 1510 J: 1,200 SF



■ 615 E. Colonial Dr., Orlando, FL 32803 ■ Phone: 407.872.0209 ■ [www.FCPG.com](http://www.FCPG.com) ■

Information furnished regarding the subject property is believed to be accurate, but no guarantee or representation is made. References to square footage are approximate. This offering is subject to errors, omissions, prior sale or lease or withdrawal without notice. ©2024 First Capital Property Group, Inc., Licensed Real Estate Brokers & Managers.



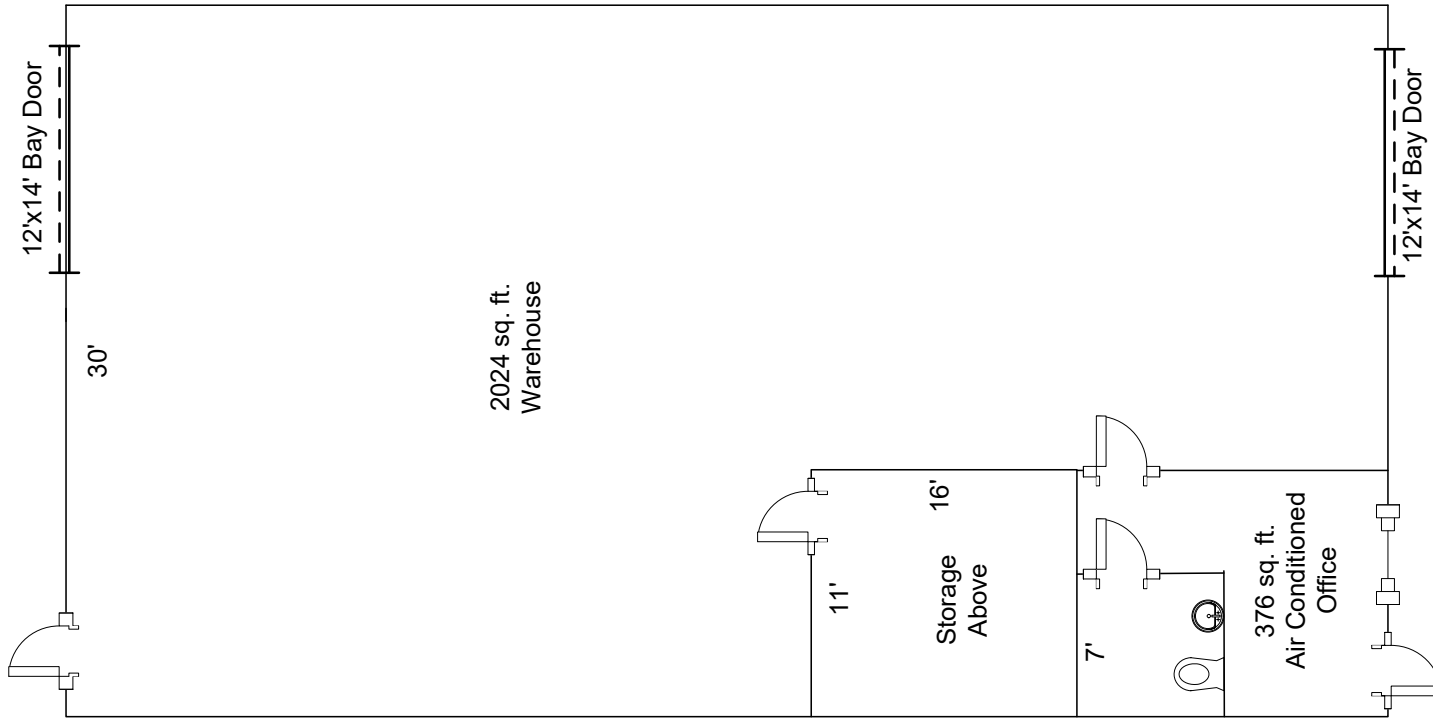
# SUITE 1510 J: 1,200 SF



■ 615 E. Colonial Dr., Orlando, FL 32803 ■ Phone: 407.872.0209 ■ [www.FCPG.com](http://www.FCPG.com) ■

Information furnished regarding the subject property is believed to be accurate, but no guarantee or representation is made. References to square footage are approximate. This offering is subject to errors, omissions, prior sale or lease or withdrawal without notice. ©2024 First Capital Property Group, Inc., Licensed Real Estate Brokers & Managers.

# SUITE 1512 B: 2,400 SF



615 E. Colonial Dr., Orlando, FL 32803 Phone: 407.872.0209 www.FCPG.com

Information furnished regarding the subject property is believed to be accurate, but no guarantee or representation is made. References to square footage are approximate. This offering is subject to errors, omissions, prior sale or lease or withdrawal without notice. ©2024 First Capital Property Group, Inc., Licensed Real Estate Brokers & Managers.





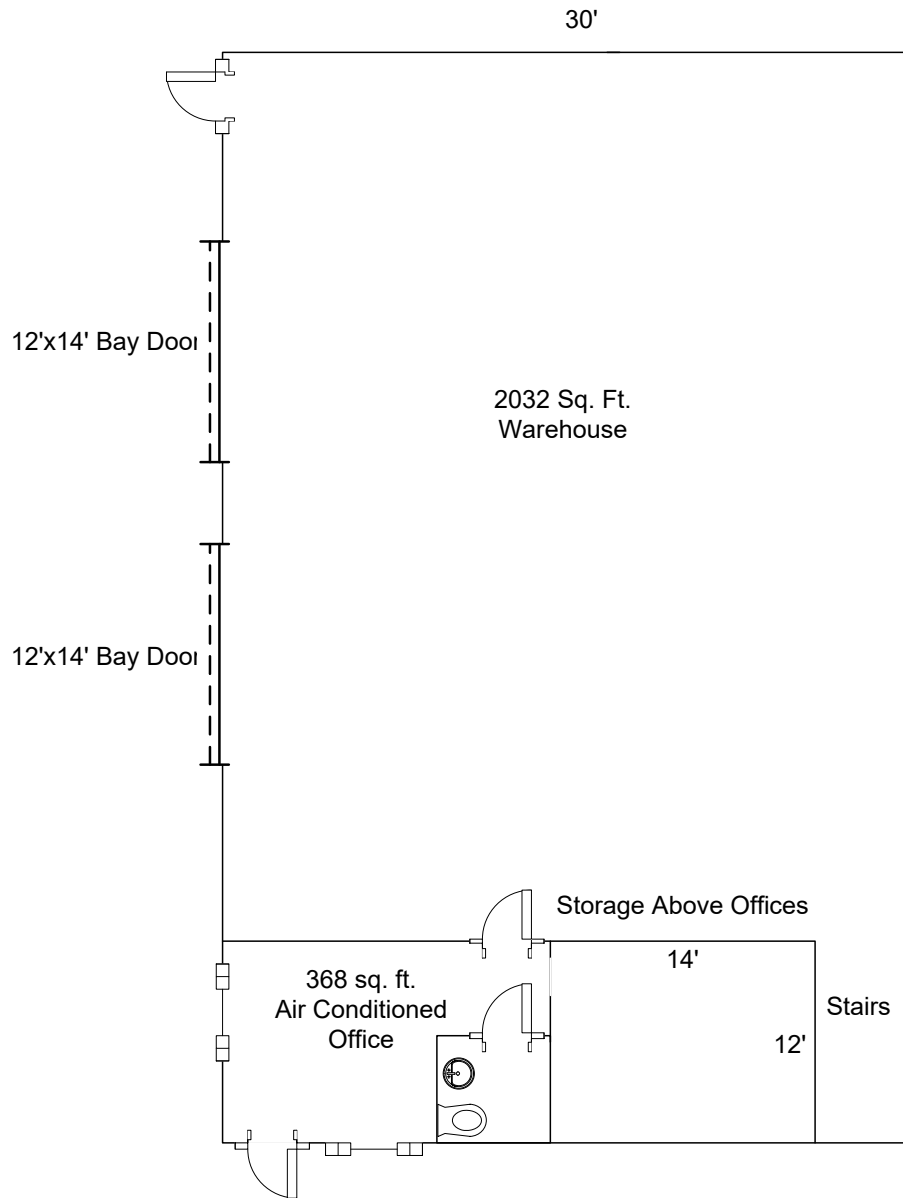
# SUITE 1512 B: 2,400 SF



■ 615 E. Colonial Dr., Orlando, FL 32803 ■ Phone: 407.872.0209 ■ [www.FCPG.com](http://www.FCPG.com) ■

Information furnished regarding the subject property is believed to be accurate, but no guarantee or representation is made. References to square footage are approximate. This offering is subject to errors, omissions, prior sale or lease or withdrawal without notice. ©2024 First Capital Property Group, Inc., Licensed Real Estate Brokers & Managers.

# SUITE 1516 I/J: 2,400 SF



615 E. Colonial Dr., Orlando, FL 32803 Phone: 407.872.0209 www.FCPG.com

Information furnished regarding the subject property is believed to be accurate, but no guarantee or representation is made. References to square footage are approximate. This offering is subject to errors, omissions, prior sale or lease or withdrawal without notice. ©2024 First Capital Property Group, Inc., Licensed Real Estate Brokers & Managers.





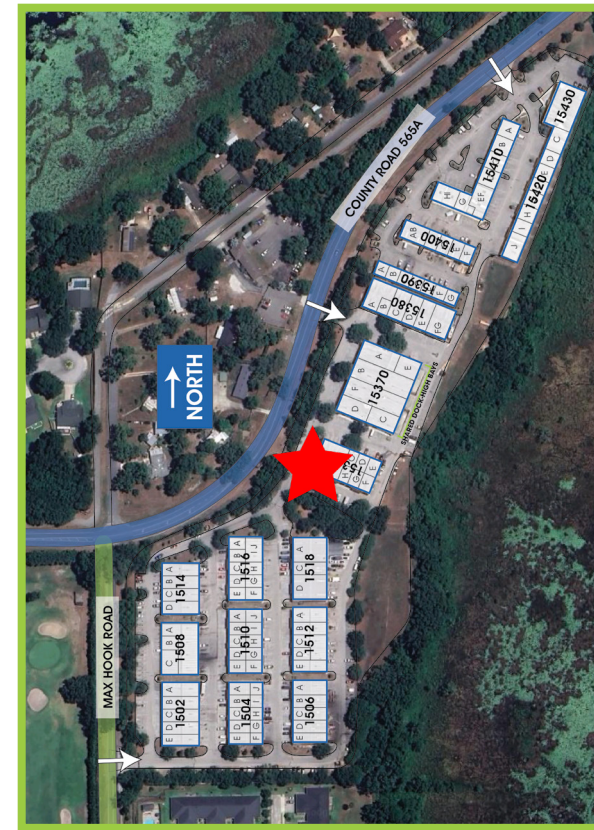
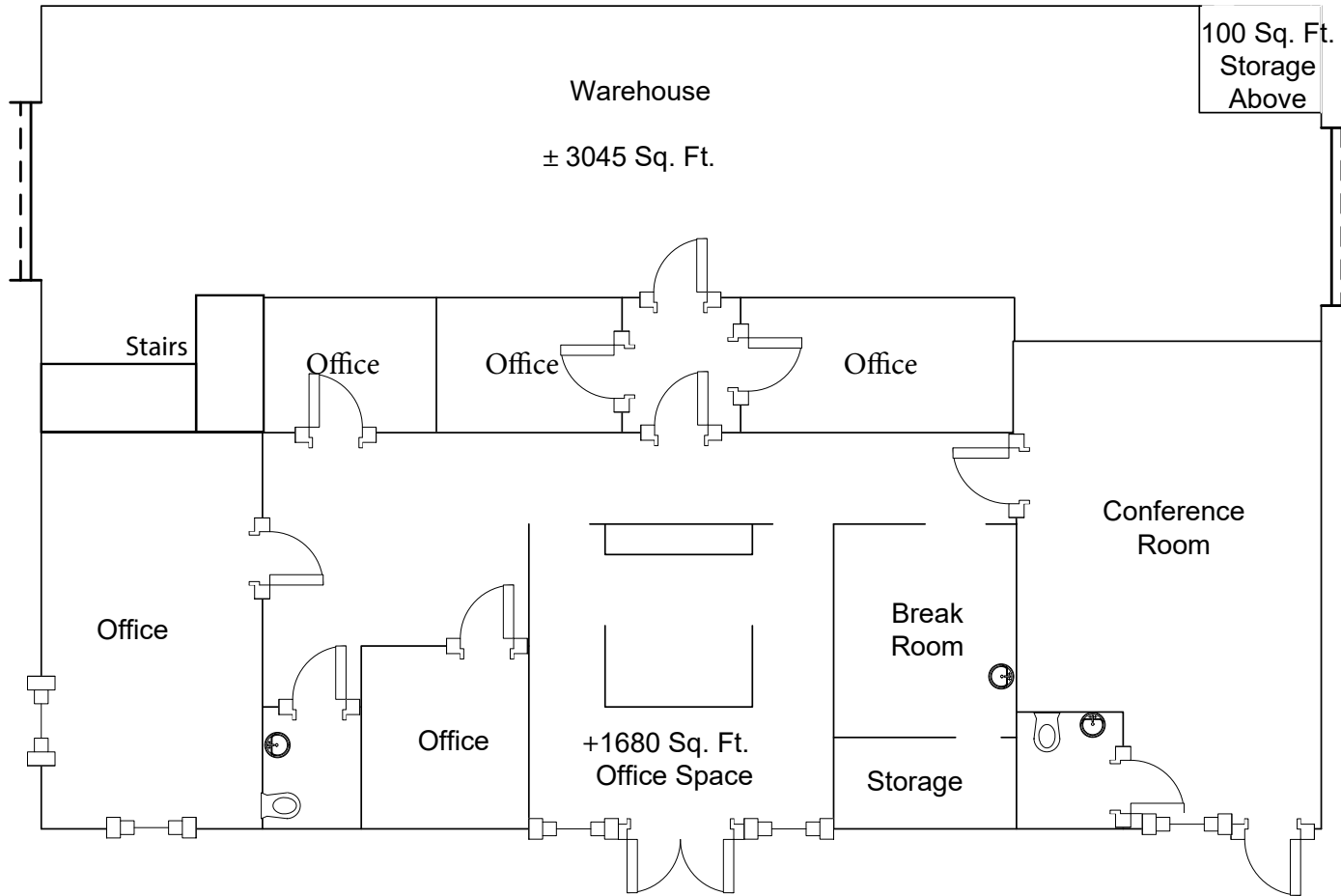
# SUITE 1516 I/J: 2,400 SF



■ 615 E. Colonial Dr., Orlando, FL 32803 ■ Phone: 407.872.0209 ■ [www.FCPG.com](http://www.FCPG.com) ■

Information furnished regarding the subject property is believed to be accurate, but no guarantee or representation is made. References to square footage are approximate. This offering is subject to errors, omissions, prior sale or lease or withdrawal without notice. ©2024 First Capital Property Group, Inc., Licensed Real Estate Brokers & Managers.

# SUITE 15360 A: 4,725 SF\*



\*Suite includes additional office and storage space above 3 offices in center of suite. This is not included in leasable square footage. The removal of the extra square footage could be required without prior notice. Warehouse and office space square footage allocations do not reflect the modification of additional offices added in center of suite.

■ 615 E. Colonial Dr., Orlando, FL 32803 ■ Phone: 407.872.0209 ■ [www.FCPG.com](http://www.FCPG.com) ■

Information furnished regarding the subject property is believed to be accurate, but no guarantee or representation is made. References to square footage are approximate. This offering is subject to errors, omissions, prior sale or lease or withdrawal without notice. ©2024 First Capital Property Group, Inc., Licensed Real Estate Brokers & Managers.





# SUITE 15360 A: 4,725 SF

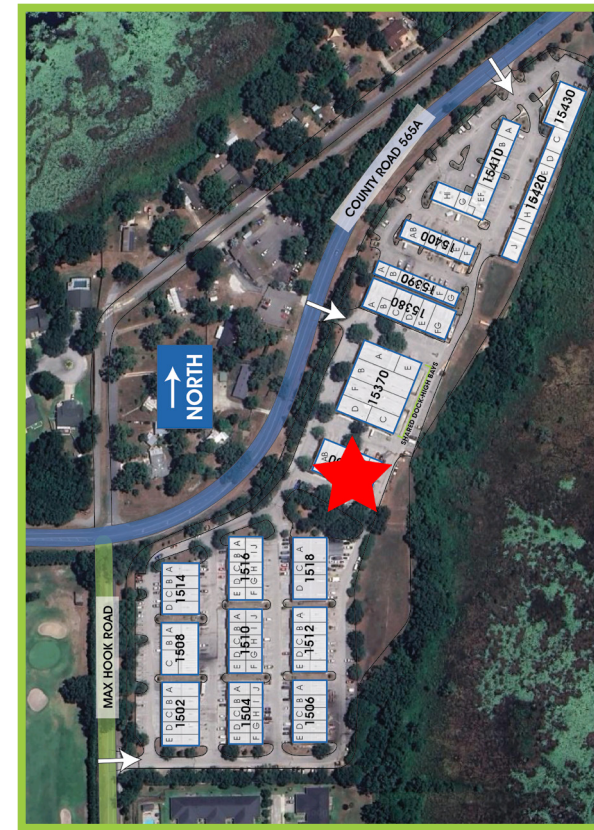
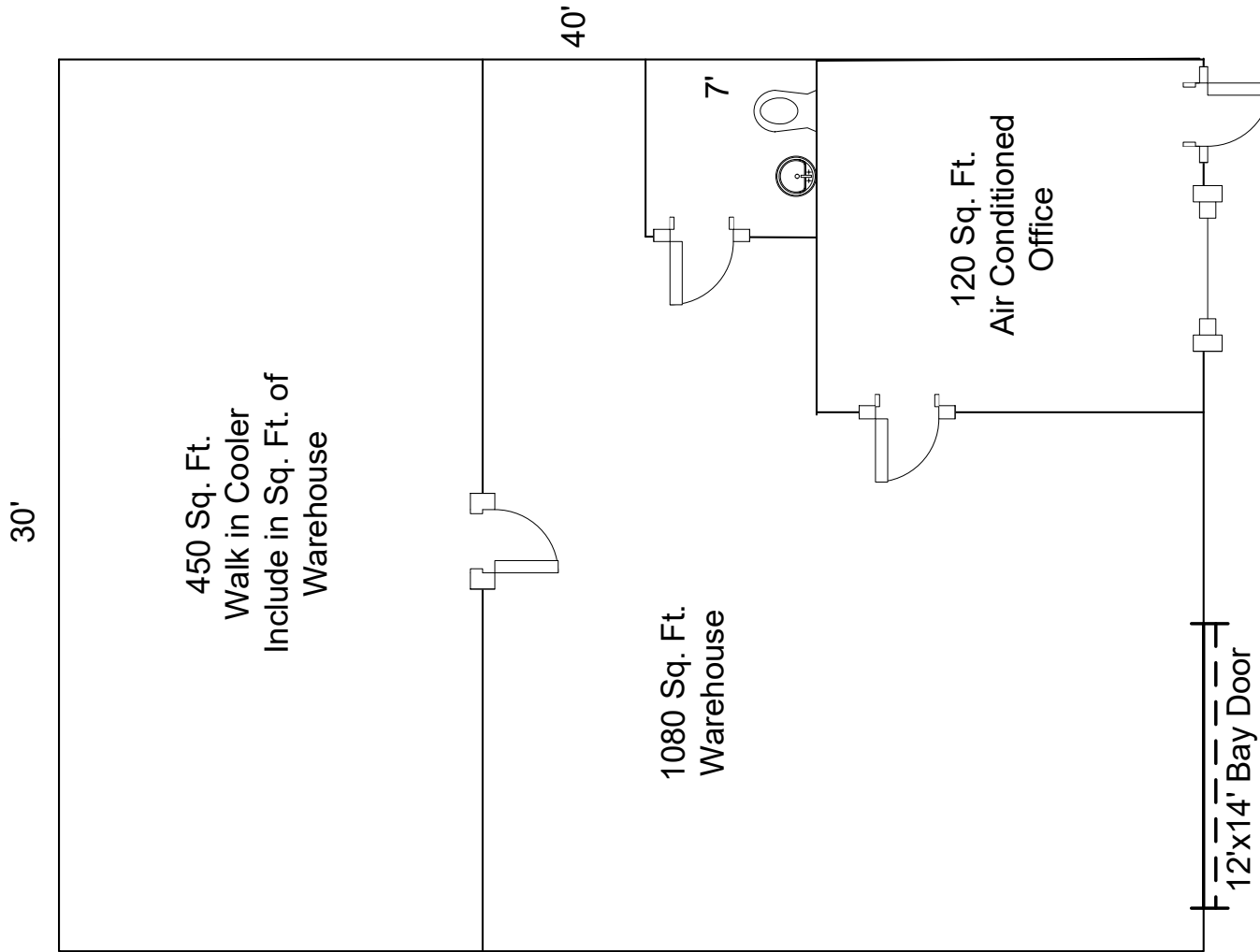


■ 615 E. Colonial Dr., Orlando, FL 32803 ■ Phone: 407.872.0209 ■ [www.FCPG.com](http://www.FCPG.com) ■

Information furnished regarding the subject property is believed to be accurate, but no guarantee or representation is made. References to square footage are approximate. This offering is subject to errors, omissions, prior sale or lease or withdrawal without notice. ©2024 First Capital Property Group, Inc., Licensed Real Estate Brokers & Managers.



# SUITE 15360 G: 1,200 SF



■ 615 E. Colonial Dr., Orlando, FL 32803 ■ Phone: 407.872.0209 ■ [www.FCPG.com](http://www.FCPG.com) ■

Information furnished regarding the subject property is believed to be accurate, but no guarantee or representation is made. References to square footage are approximate. This offering is subject to errors, omissions, prior sale or lease or withdrawal without notice. ©2024 First Capital Property Group, Inc., Licensed Real Estate Brokers & Managers.



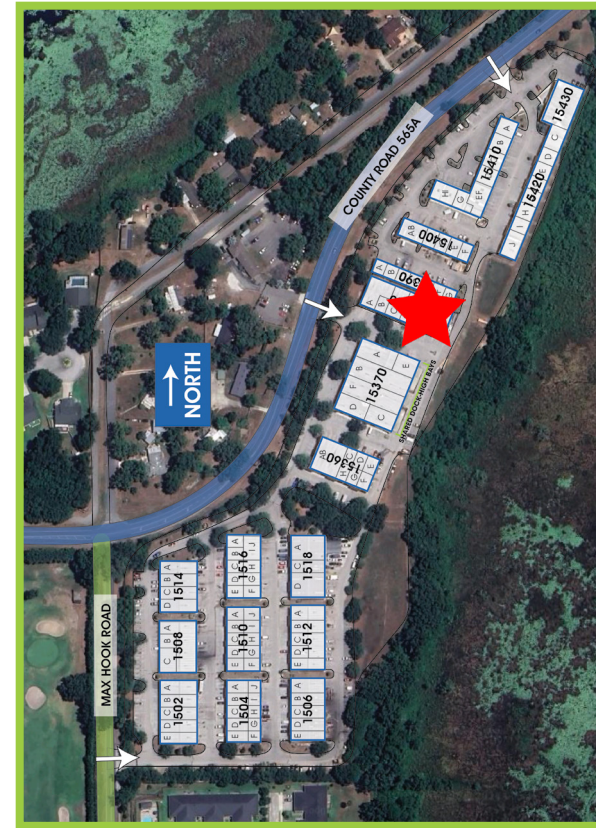
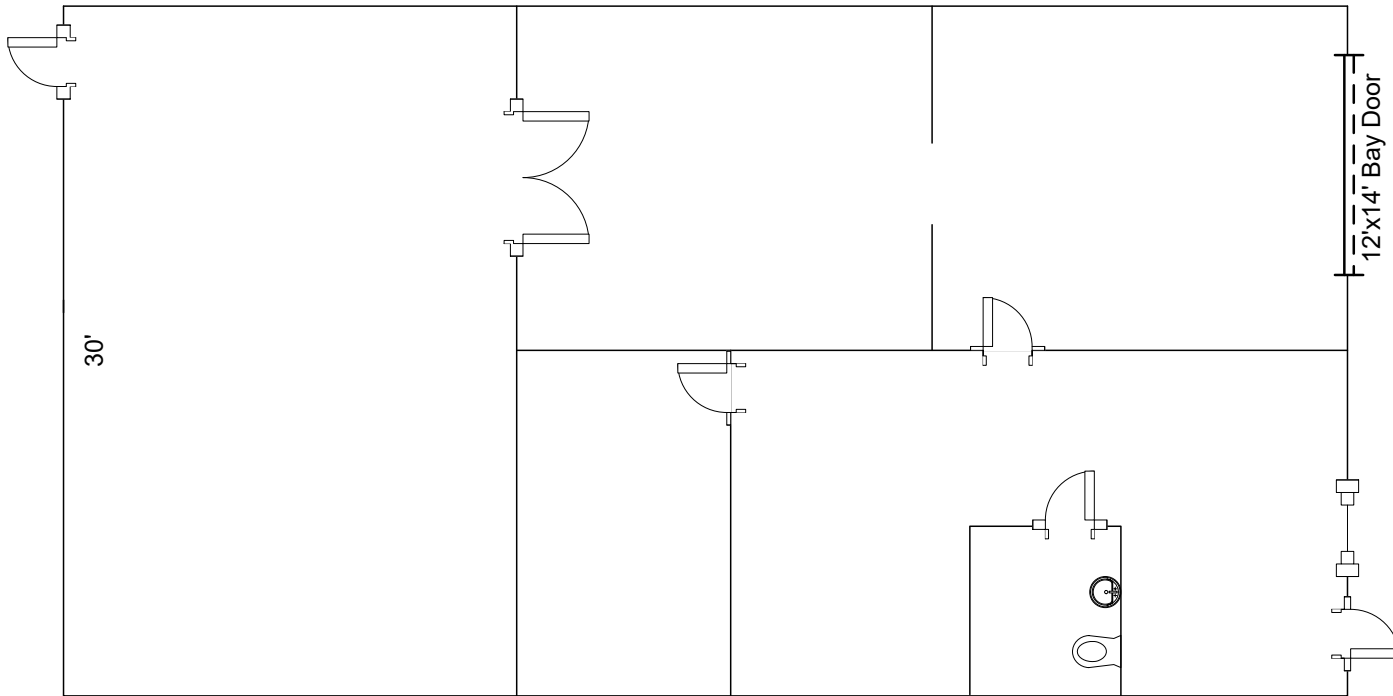
# SUITE 15360 G: 1,200 SF



■ 615 E. Colonial Dr., Orlando, FL 32803 ■ Phone: 407.872.0209 ■ [www.FCPG.com](http://www.FCPG.com) ■

Information furnished regarding the subject property is believed to be accurate, but no guarantee or representation is made. References to square footage are approximate. This offering is subject to errors, omissions, prior sale or lease or withdrawal without notice. ©2024 First Capital Property Group, Inc., Licensed Real Estate Brokers & Managers.

# SUITE 15380 E: 2,100 SF



■ 615 E. Colonial Dr., Orlando, FL 32803 ■ Phone: 407.872.0209 ■ [www.FCPG.com](http://www.FCPG.com) ■

Information furnished regarding the subject property is believed to be accurate, but no guarantee or representation is made. References to square footage are approximate. This offering is subject to errors, omissions, prior sale or lease or withdrawal without notice. ©2024 First Capital Property Group, Inc., Licensed Real Estate Brokers & Managers.



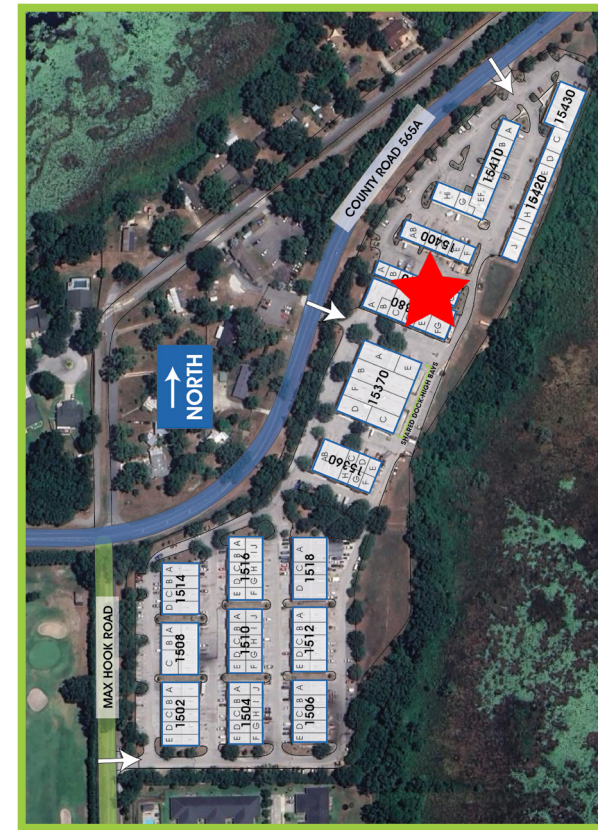
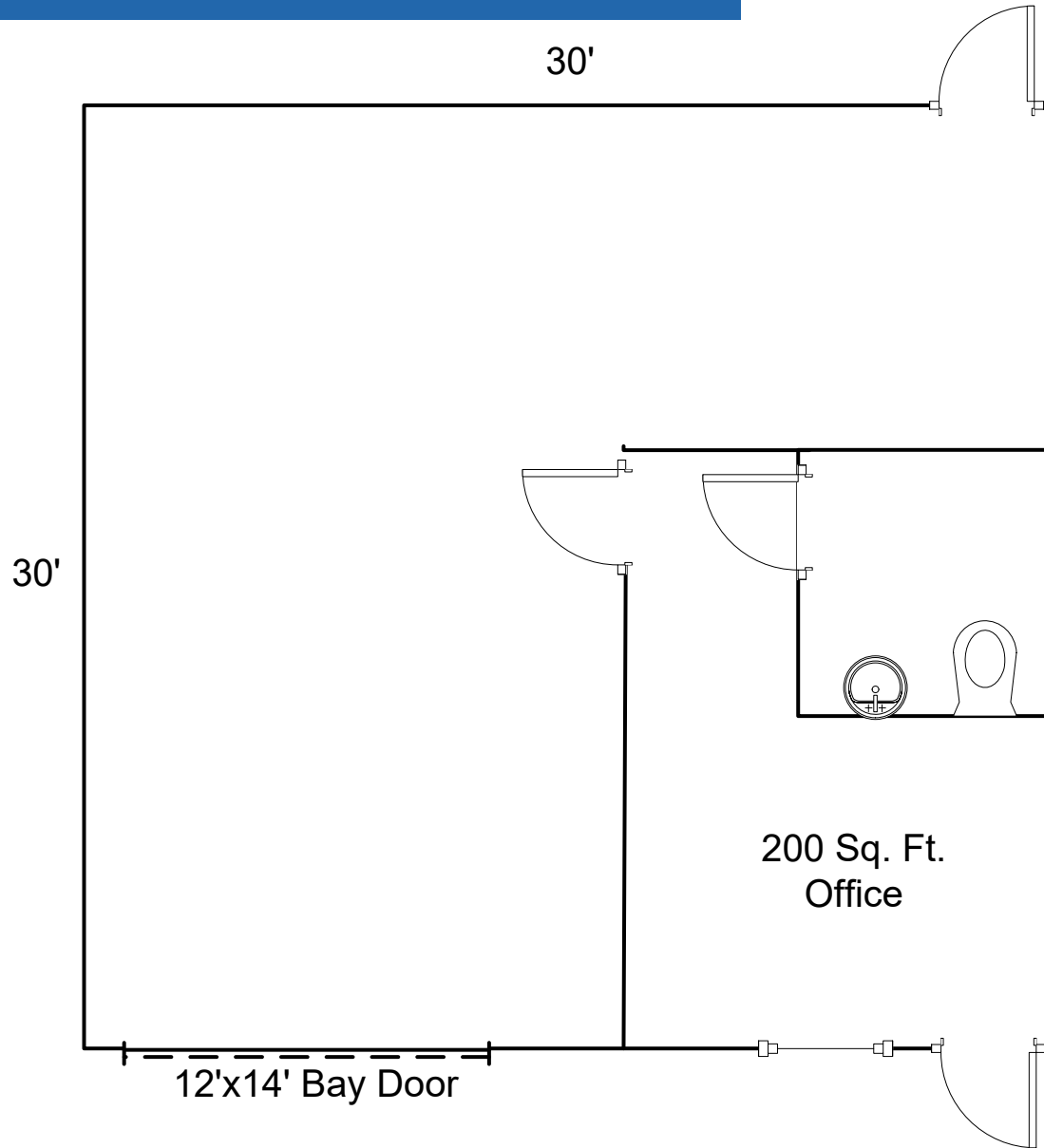
# SUITE 15380 E: 2,100 SF



■ 615 E. Colonial Dr., Orlando, FL 32803 ■ Phone: 407.872.0209 ■ [www.FCPG.com](http://www.FCPG.com) ■

Information furnished regarding the subject property is believed to be accurate, but no guarantee or representation is made. References to square footage are approximate. This offering is subject to errors, omissions, prior sale or lease or withdrawal without notice. ©2024 First Capital Property Group, Inc., Licensed Real Estate Brokers & Managers.

# SUITE 15390 E: 900 SF



■ 615 E. Colonial Dr., Orlando, FL 32803 ■ Phone: 407.872.0209 ■ [www.FCPG.com](http://www.FCPG.com) ■

Information furnished regarding the subject property is believed to be accurate, but no guarantee or representation is made. References to square footage are approximate. This offering is subject to errors, omissions, prior sale or lease or withdrawal without notice. ©2024 First Capital Property Group, Inc., Licensed Real Estate Brokers & Managers.



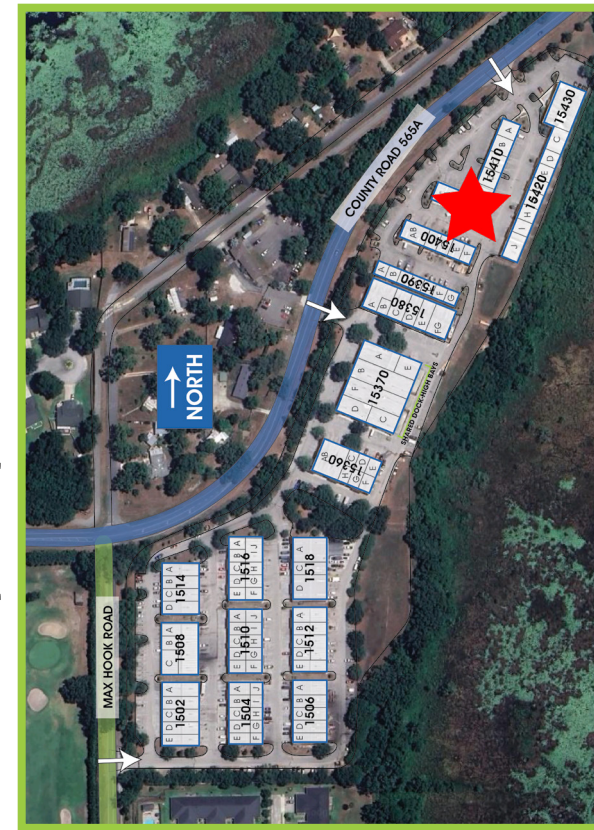
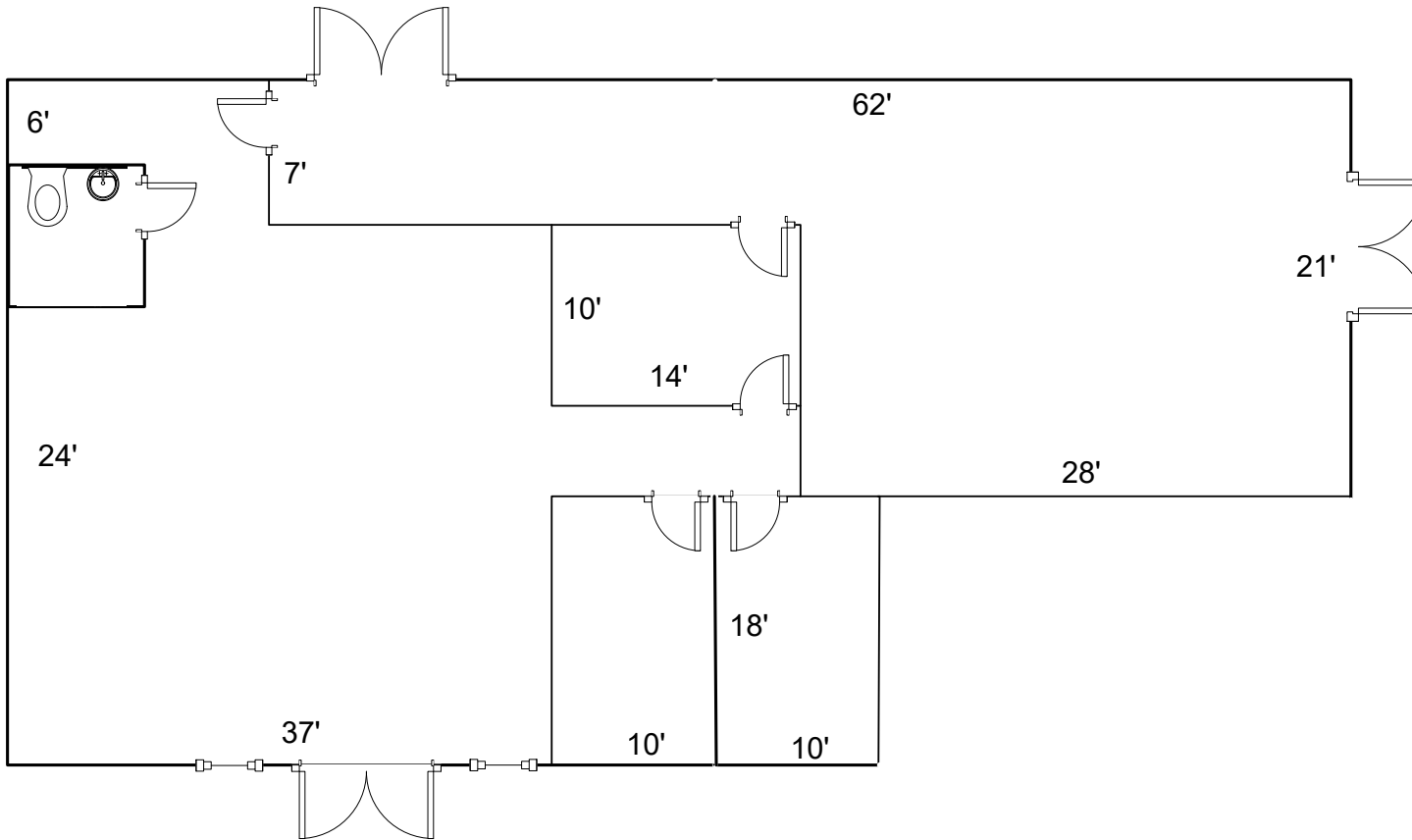
# SUITE 15390 E: 900 SF



■ 615 E. Colonial Dr., Orlando, FL 32803 ■ Phone: 407.872.0209 ■ [www.FCPG.com](http://www.FCPG.com) ■

Information furnished regarding the subject property is believed to be accurate, but no guarantee or representation is made. References to square footage are approximate. This offering is subject to errors, omissions, prior sale or lease or withdrawal without notice. ©2024 First Capital Property Group, Inc., Licensed Real Estate Brokers & Managers.

# SUITE 15410 E: 2,800 SF



615 E. Colonial Dr., Orlando, FL 32803 Phone: 407.872.0209 www.FCPG.com

Information furnished regarding the subject property is believed to be accurate, but no guarantee or representation is made. References to square footage are approximate. This offering is subject to errors, omissions, prior sale or lease or withdrawal without notice. ©2024 First Capital Property Group, Inc., Licensed Real Estate Brokers & Managers.



# SUITE 15410 E: 2,800 SF



■ 615 E. Colonial Dr., Orlando, FL 32803 ■ Phone: 407.872.0209 ■ [www.FCPG.com](http://www.FCPG.com) ■

Information furnished regarding the subject property is believed to be accurate, but no guarantee or representation is made. References to square footage are approximate. This offering is subject to errors, omissions, prior sale or lease or withdrawal without notice. ©2024 First Capital Property Group, Inc., Licensed Real Estate Brokers & Managers.

