

FORT MEADE ROAD 20± ACRES

FORT MEADE ROAD
FROSTPROOF, FL 33843

David Hitchcock, ALC, CCIM
863.557.0082
david.hitchcock@svn.com

Property Overview



Sale Price **\$530,000**

OFFERING SUMMARY

Acreage: **19.56 Acres**
Price / Acre: \$27,096
City: Frostproof
County: Polk
Property Type: Land Investment,
Residential Development

PROPERTY OVERVIEW

This is an incredible investment opportunity in the growing Frostproof area. This parcel has agricultural zoning and a stunning view of Lake Clinch. Its prime location near Frostproof and US 27 -98 and its features make it an excellent candidate for residential development, offering opportunities for future growth in a sought-after area. The zoning also supports farming, livestock, or other agricultural ventures, providing flexibility for various uses. Conveniently located near major routes yet surrounded by the peaceful charm of the Frostproof area, this property is a versatile and great addition to any investment portfolio. Don't miss out on this exceptional opportunity.



SPECIFICATIONS & FEATURES

Land Types:	<ul style="list-style-type: none">• Land Investment• Residential Development
Uplands / Wetlands:	19.56 acres of uplands
Soil Types:	Candler & Apopka Fine Sand
Taxes & Tax Year:	2024 - \$4,525
Zoning / FLU:	Zoning - Agriculture/Future Land Use - Agriculture
Road Frontage:	590' on 9th St, 590' on Ft. Meade Road, 1,435' on Pine Ave
Utilities & Water Source:	Public water, furnished by the town of Frostproof is adjacent to the property. <ul style="list-style-type: none">• The current zoning and future land use is Agriculture. However
Planning and / or Permits:	<ul style="list-style-type: none">• discussions with the municipal planner indicate an ability to change to a future land use to Residential Low and Zoning to R1 A or R1B which would allow up to 4 residential units per acre.

Location



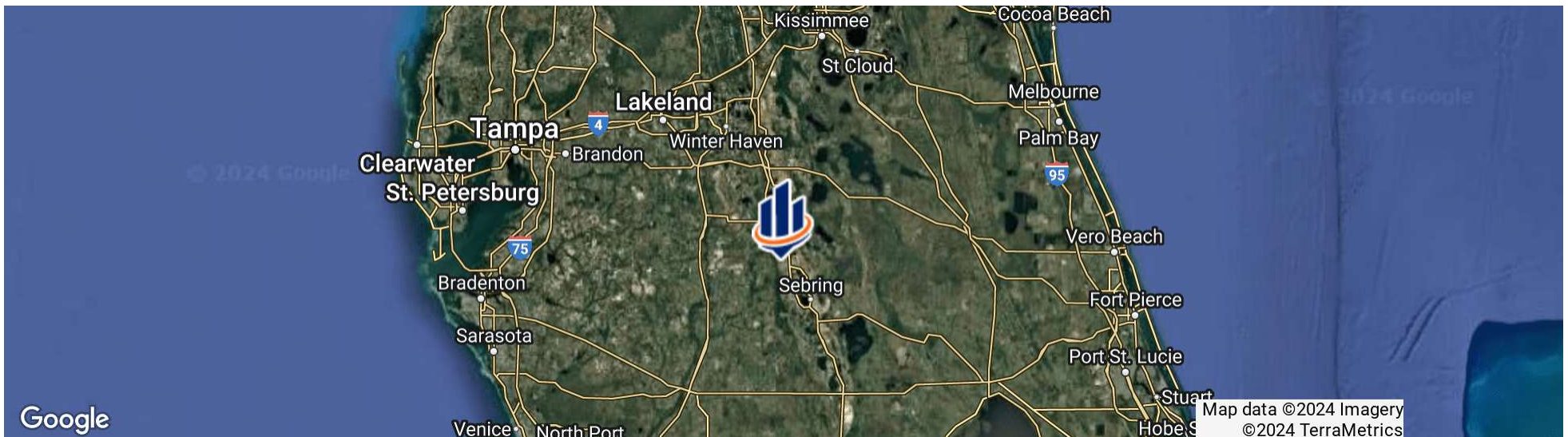
LOCATION & DRIVING DIRECTIONS

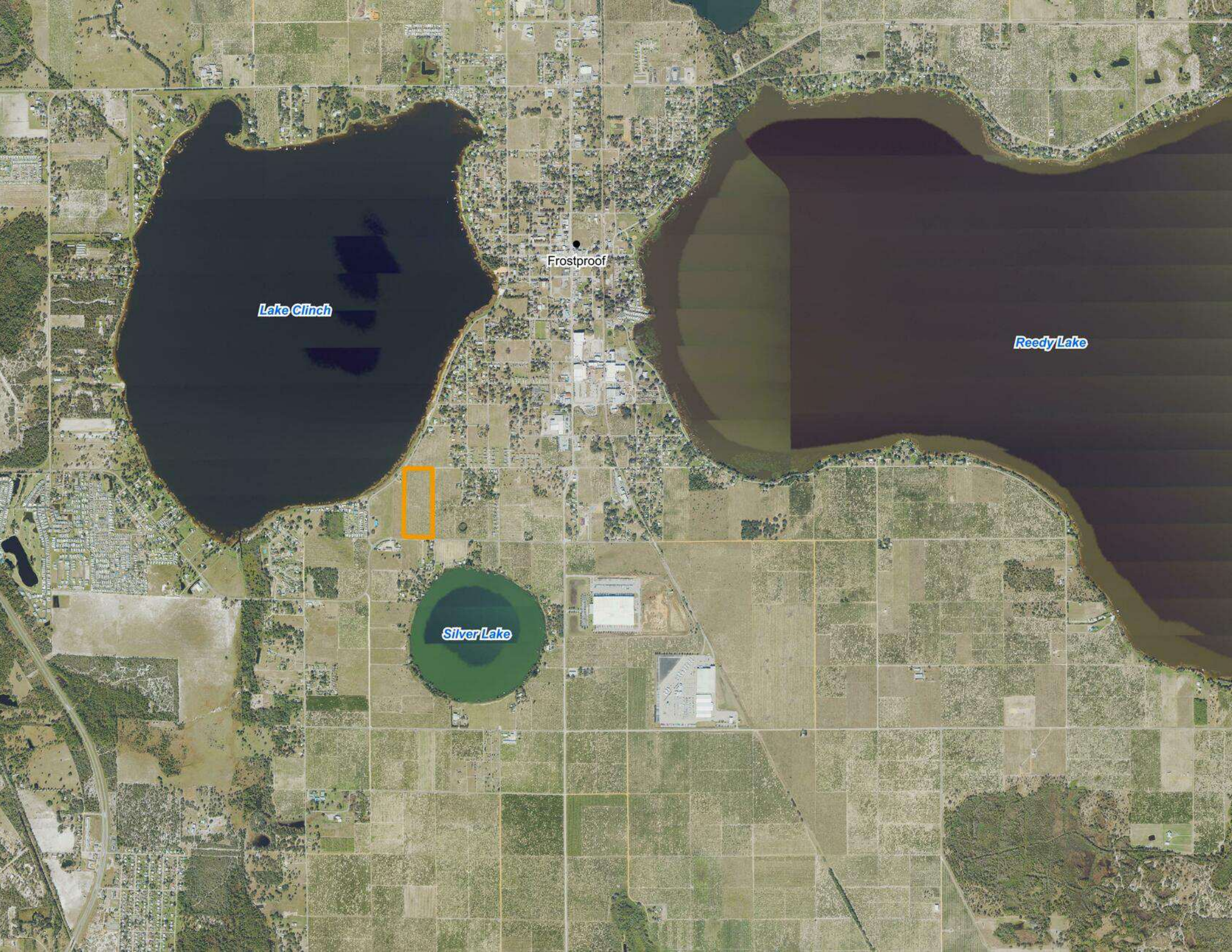
Parcel: 283205-983600-000020 & 283205-983600-000010

GPS: 27.7297107, -81.5373107

Driving Directions: From the intersection of US 98 and US 27 in Frostproof, FL go east on Fort Meade Road 2.4 miles, the property will be on the left.

Showing Instructions: -





Lake Clinch

Frostproof

Reedy Lake

Silver Lake



ONE OF AMERICA'S BEST BROKERAGES



One of America's
Best Brokerages



APEX 2022 Top
National Producer



Most Influential
Business Leaders



Largest Commercial
Real Estate Brokers
in Tampa Bay



Ranked 210 on Inc.
5000 Regional List



For more information visit www.SVNsaunders.com

HEADQUARTERS

1723 Bartow Rd
Lakeland, FL 33801
863.648.1528

ORLANDO

605 E Robinson Street, Suite 410
Orlando, Florida 32801
386.438.5896

NORTH FLORIDA

356 NW Lake City Avenue
Lake City, Florida 32055
352.364.0070

GEORGIA

203 E Monroe Street
Thomasville, Georgia 31792
229.299.8600

ARKANSAS

112 W Center St, Suite 501
Fayetteville, Arkansas 72701
479.582.4113

©2024 Saunders Ralston Dantzler Real Estate. All SVN® Offices Independently Owned and Operated SVN | Saunders Ralston Dantzler Real Estate is a full-service land and commercial real estate brokerage representing buyers, sellers, investors, institutions, and landowners since 1996. We are recognized nationally as an authority on all types of land, including agriculture, ranch, recreation, and residential development. Our commercial real estate services include property management, leasing and tenant representation, valuation, business brokerage, and advisory and counseling services for office, retail, industrial, and multifamily properties. Our firm also features an auction company, a forestry division, international partnerships, and extensive expertise in conservation easements. Located in Florida, Georgia, and Alabama, we provide proven leadership and collaborative expertise backed by the strength of the SVN® global platform.

