

FOR LEASE

19,615 SF WAREHOUSE +4.35 ACRES IOS

4710 E. BROADWAY AVENUE | TAMPA, FL

PROPERTY OVERVIEW

Located in Tampa's prominent East Tampa industrial submarket, this prime infill property features a 19,615 SF free-standing warehouse on 4.35 usable acres. The site is fully fenced with exterior surrounding lighting and egresses and ingresses along three access roads with frontage visibility. There is a public transportation Hartline Bus stop in front of the property, enhancing accessibility. The property is zoned Commercial Intensive (CI), offering flexible use for various professional businesses, including motor vehicle dealerships and rentals, light manufacturing, and equipment repair.

AVAILABLE ACRES: 4.35

AVAILABLE SF: 19,615 SF

WAREHOUSE: ±13,348 SF

OFFICE: ±5,260 SF

CLEAR HEIGHT: 15'

COLUMNS: 29' x 22'

LOADING: (1) 20'X15' Grade-Level Door

ZONING: Commercial Intensive (CI)



JESSICA MIZRAHI, SIOR
Founding Principal
jmizrahi@lee-associates.com
D 813.804.0886

ED KILLMER
Founding Principal
ekillmer@lee-associates.com
D 813.309.2805

BEN EWERS
Associate
bewers@lee-associates.com
D 352.362.8535



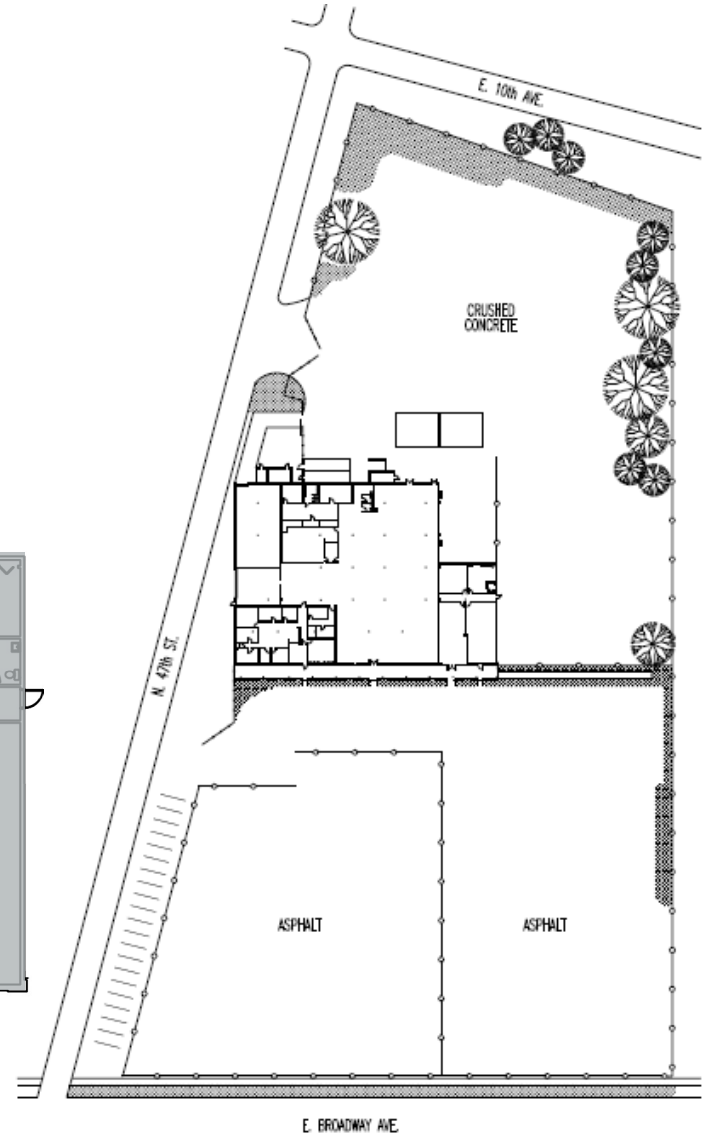
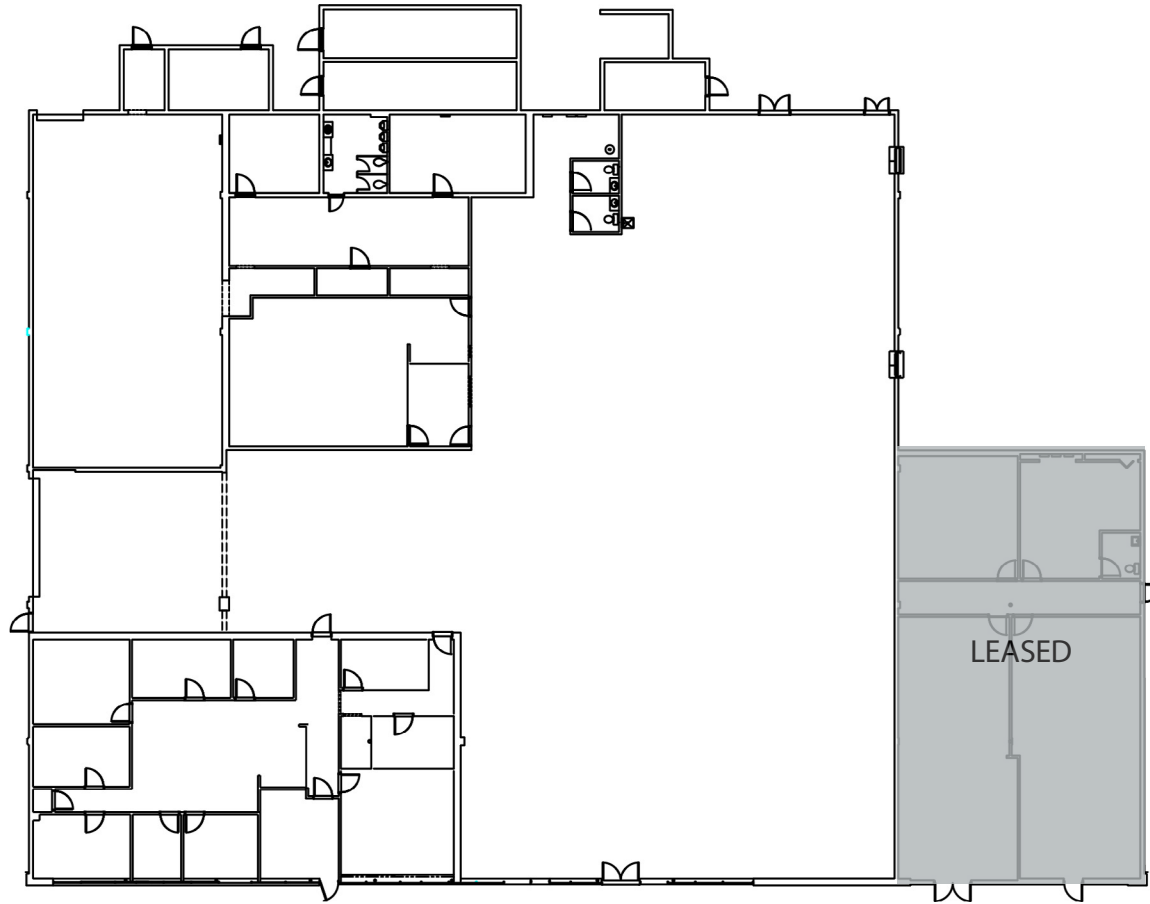
FOR LEASE

19,615 SF WAREHOUSE +4.35 ACRES IOS

4710 E. BROADWAY AVENUE | TAMPA, FL 33605



COMMERCIAL REAL ESTATE SERVICES
TAMPA BAY



JESSICA MIZRAHI, SIOR
Founding Principal
jmizrahi@lee-associates.com
D 813.804.0886

ED KILLMER
Founding Principal
ekillmer@lee-associates.com
D 813.309.2805

BEN EWERS
Associate
bewers@lee-associates.com
D 352.362.8535



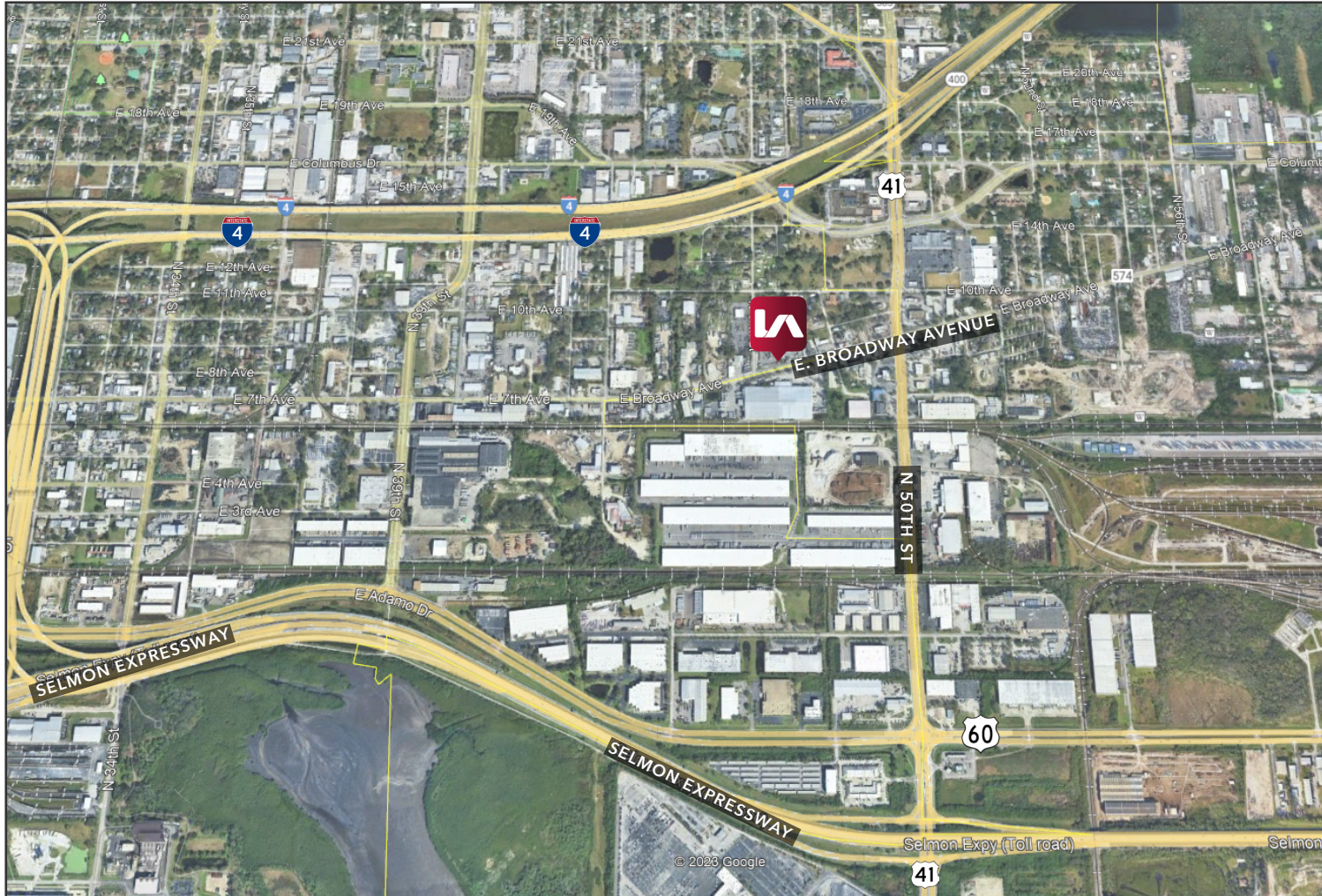
All information furnished regarding property for sale, rental or financing is from sources deemed reliable, but no warranty or representation is made to the accuracy thereof and same is submitted to errors, omissions, change of price, rental or other conditions prior to sale, lease or financing or withdrawal without notice. No liability of any kind is to be imposed on the broker herein.

1646 West Snow Ave. Suite 6 | Tampa, FL 33606
lee-associates.com

FOR LEASE

19,615 SF WAREHOUSE +4.35 ACRES IOS

4710 E. BROADWAY AVENUE | TAMPA, FL 33605



JESSICA MIZRAHI, SIOR
Founding Principal
jmizrahi@lee-associates.com
D 813.804.0886

ED KILLMER
Founding Principal
ekillmer@lee-associates.com
D 813.309.2805

BEN EWERS
Associate
bewers@lee-associates.com
D 352.362.8535

