

# FOR LEASE

22,880 SF - 70,165 SF OFFICE / WAREHOUSE SPACE

14500 GLOBAL PARKWAY, FORT MYERS, FL 33913

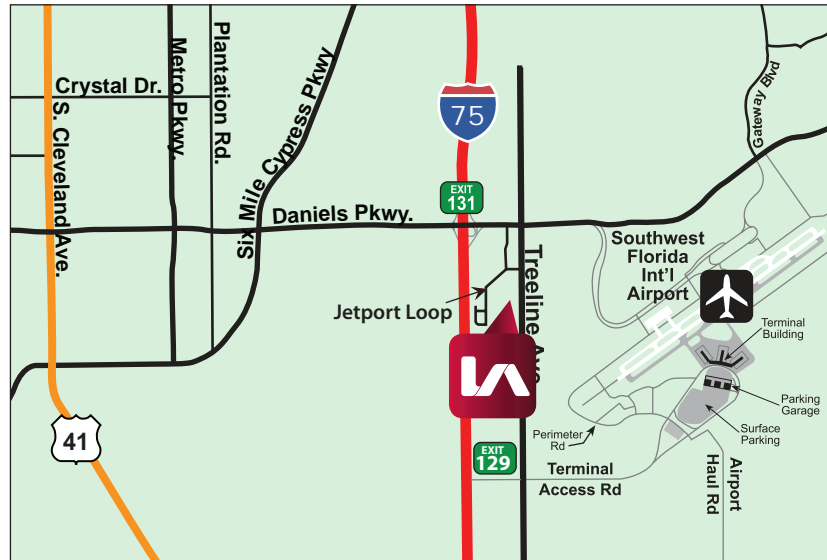


Click to View Property Video

- **AVAILABLE:** 70,165 SF
- **LEASE RATE:** \$12.50 / SF NNN
- **CAM:** \$3.50 / SF (Est.)

## PROPERTY FEATURES

- New Construction Industrial Warehouse
- Situated on 12.64 Acres
- Design-Build Opportunities Available
- 128' - 129.5' Truck Court
- Rear-Load Building Configuration
- Ample Parking Available
- Fully Sprinklered
- Located Off Treeline Avenue Just South of Daniels Parkway
- Zoned IPD ([click here for uses](#))



Please Contact:  
**The Industrial Team**

**Derek Bornhorst, CCIM, SIOR**  
Principal

📞 **239.210.7607**

✉️ [dbornhorst@lee-associates.com](mailto:dbornhorst@lee-associates.com)

All information furnished regarding property for sale, rental or financing is from sources deemed reliable, but no warranty or representation is made to the accuracy thereof and same is subject to errors, omissions, change of price, or other conditions prior to sale, lease or financing or withdrawal without notice. No liability of any kind is to be imposed on the broker herein.

# FOR LEASE

22,880 SF - 70,165 SF OFFICE / WAREHOUSE SPACE

14500 GLOBAL PARKWAY, FORT MYERS, FL 33913

DESIGN-BUILD  
OPPORTUNITIES  
AVAILABLE

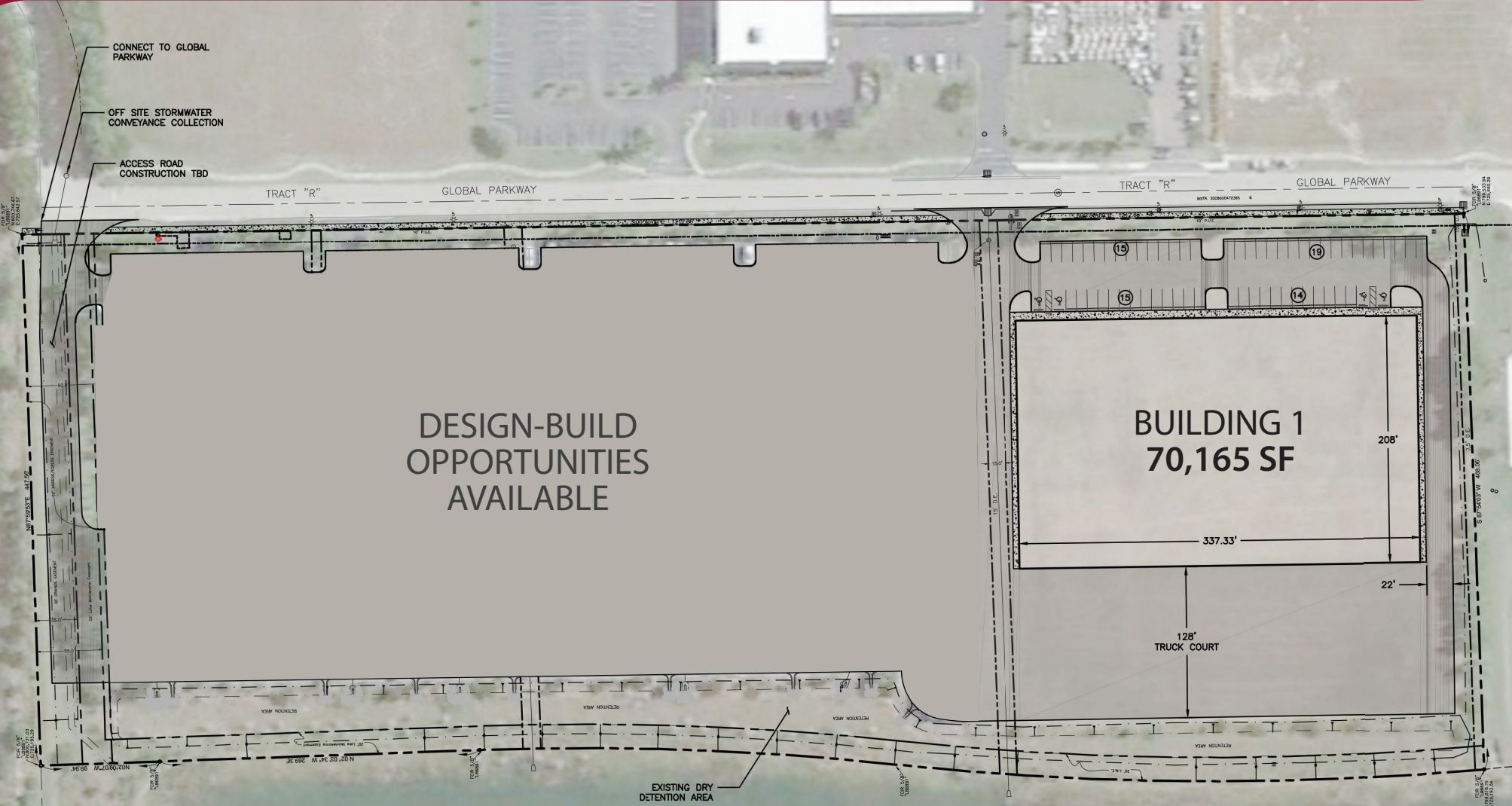
**BUILDING 1**  
**70,165 SF**

128'  
TRUCK COURT

208'

337.33'

22'



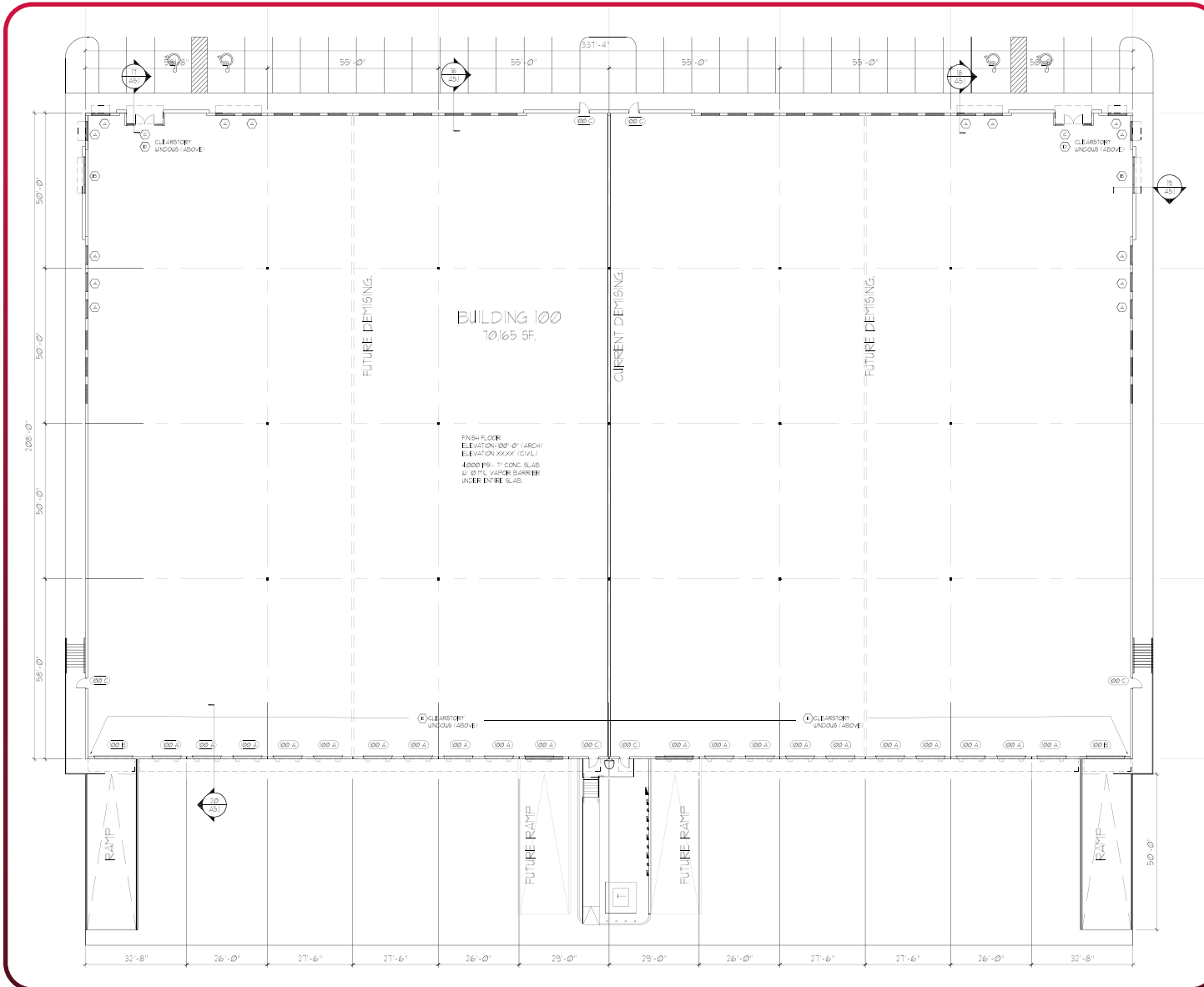
YOUR LOCAL MARKET **EXPERT**

11215 Metro Parkway, Suite 1 | Fort Myers, Florida 33966 | Lee-FL.com

# FOR LEASE

22,880 SF - 70,165 SF OFFICE / WAREHOUSE SPACE

14500 GLOBAL PARKWAY, FORT MYERS, FL 33913



BUILDING 1 - 70,165 SF	
Min. Divisible	22,880 SF
Dock-High Door(s)	18
Drive-In Door(s)	2* via Ramps
Clear Height	32'
Building Depth	208'
Bay Spacing	55' x 50'
Truck Court	125'
Parking Spaces	63

\* Potential for 4 Ramps Total

YOUR LOCAL MARKET **EXPERT**

11215 Metro Parkway, Suite 1 | Fort Myers, Florida 33966 | Lee-FL.com

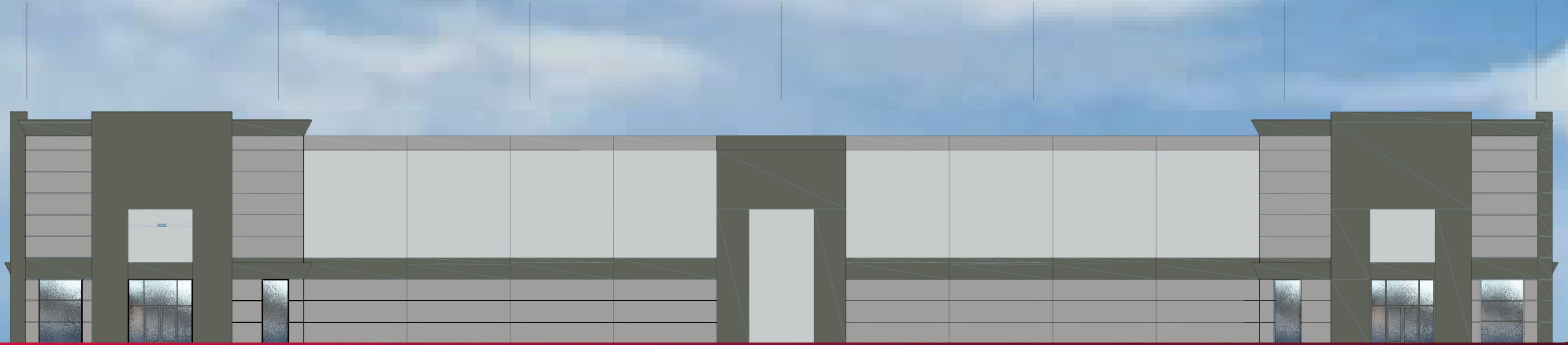


# FOR LEASE

22,880 SF - 70,165 SF OFFICE / WAREHOUSE SPACE

14500 GLOBAL PARKWAY, FORT MYERS, FL 33913

## EAST ELEVATION



## SOUTH ELEVATION



YOUR LOCAL MARKET **EXPERT**

11215 Metro Parkway, Suite 1 | Fort Myers, Florida 33966 | Lee-FL.com



# CONSTRUCTION STATUS

NOVEMBER 11, 2024



YOUR LOCAL MARKET **EXPERT**

11215 Metro Parkway, Suite 1 | Fort Myers, Florida 33966 | Lee-FL.com



# FOR LEASE

22,880 SF - 70,165 SF OFFICE / WAREHOUSE SPACE

14500 GLOBAL PARKWAY, FORT MYERS, FL 33913



YOUR LOCAL MARKET **EXPERT**

11215 Metro Parkway, Suite 1 | Fort Myers, Florida 33966 | Lee-FL.com